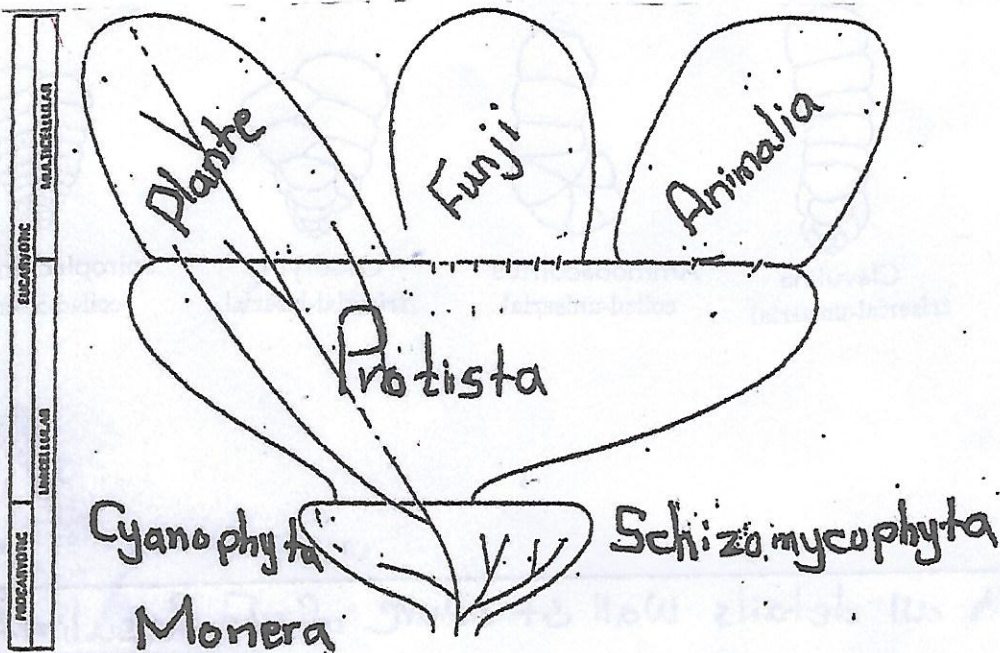


1. Draw Only the Kingdoms of life suggested by Whittaker, 1969

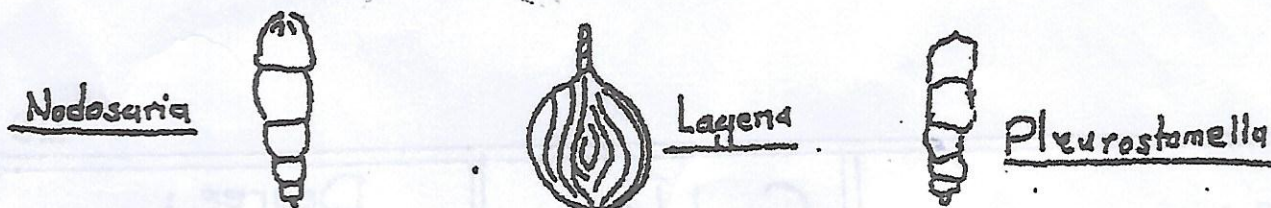


30

2. Fine Sediments are always attractive strata to some genera of Forams, give interpretation and examples with drawing.

Silty and muddy substrates are often rich in organic debris and the small pore spaces contain bacterial blooms.

\* Such substrates are therefore attractive to foraminifera and support large populations. Many of these species are thin-shell delicate and elongate forms.



The foods can not removed by the action of waves within these types of fine sediments -

20

3. Draw with names and examples all Combined Serial arrangement of chambers in Foraminifera.



Bigenerina  
biserial-uniserial



Clavulina  
triserial-uniserial



Ammobaculites  
coiled-uniserial



Gaudryina  
triserial-biserial

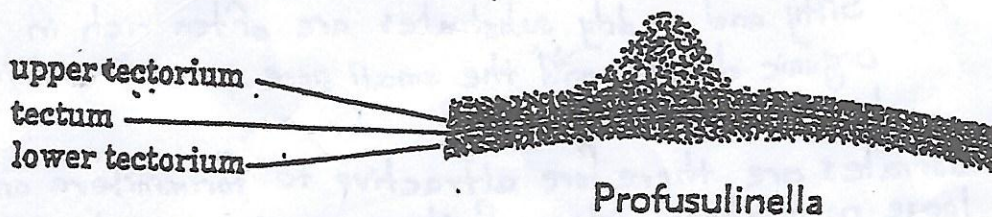


Spiroplectammina  
coiled-biserial

30

4. Draw with all details wall structure of Profusulinella

### Wall structure of Profusulinella



20

Name :

Good Luck

Degree :

Group :

Dr. Ali Ashar