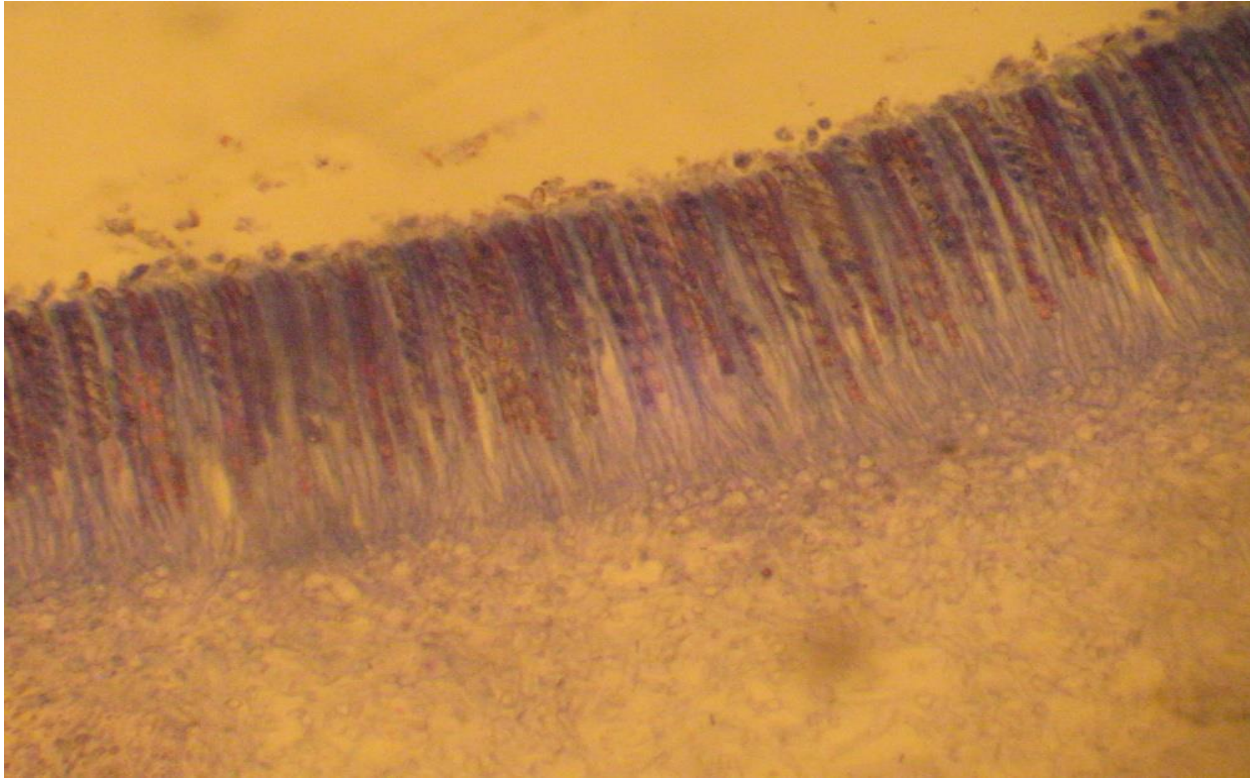




Practical Mycology exam. 2022-2023
3rd Stage-General / Dep. of Biology

Q1/A. Identify this slide?



B. Many species of fungi are often found on foods in the form of..... and.....

Q2/ A. Identify this slide?



B. Plant pathogenic fungi can be isolated from infected tissue by taking a part of the tissue a round infected zone by 1cm, give a reason?

Q3 / A. Identify this slide?



**B. of the fungal life cycle termed as the mitosporic, or anamorphic phase, while the
..... of the fungus can be termed as the teleomorph**

Q4/A. Identify this sample? (Common name)



B. Compare between *Absidia* sp. and *Rhizopus* sp.?

Q5 / Write the followings:

Syncephalastrum sp.

Rhizopus sp.

Synchytrium endobioticum

Tuber rufum

Cunninghamella sp.

Types of sporangium:.....

Class:.....

Disease:.....

Class:.....

Types of sporangium:.....

Q6/ A. There are two types of fungal tissue, which includes:.....and

B. Hyperplasia is.....while hypertrophy is

Q7/A. Identify this slide?



B. For Preservation of fungi in Liquid nitrogen technique, the glycerol adds to the cell suspension, give a reason?

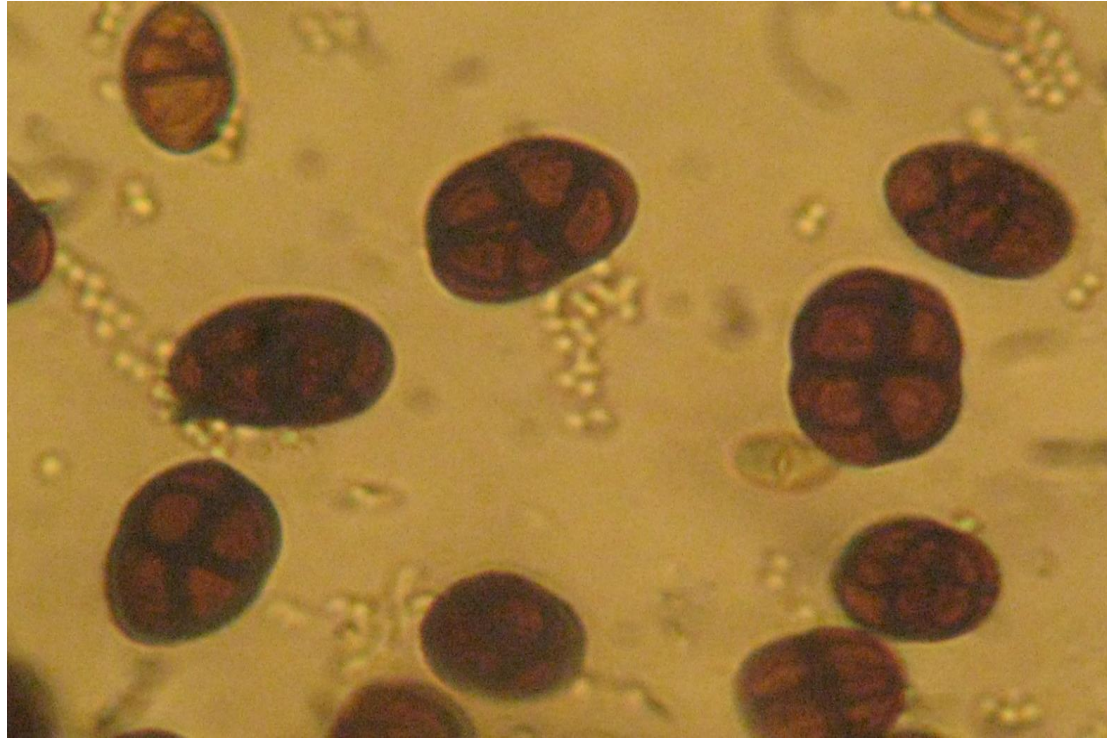
Q8/ A.has Appendages of cleistothecium hayaline or dark, dichotomously branched at the tip.

B. The spores of fungi that produce asexually are either borne in sporangia then called.....or produce at the tips or sides of hyphae, called.....

Q9/ A. Asexual fruiting bodies in fungi includes:.....and.....

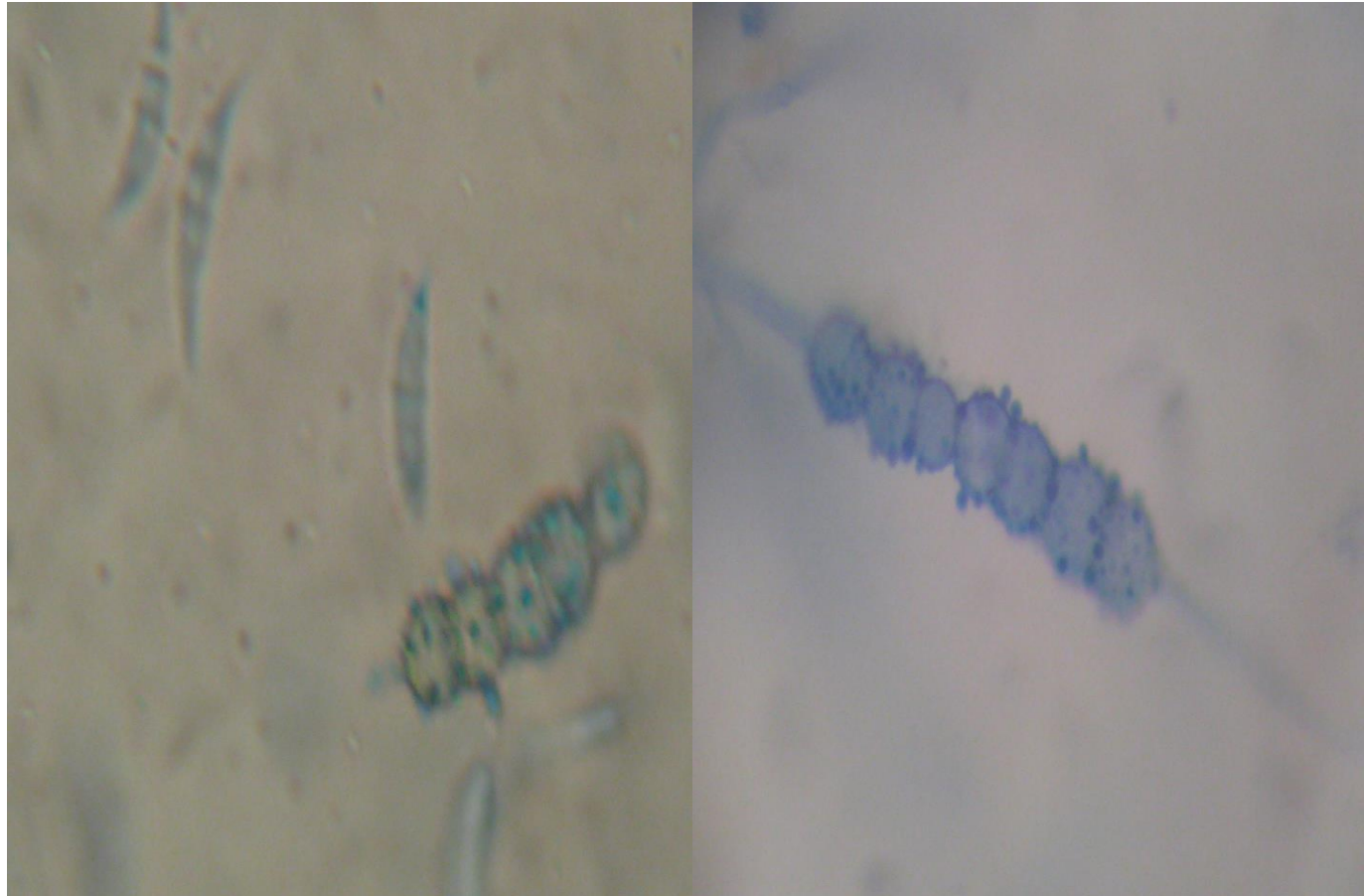
B. According to surface of fungal colonies surface descriptions might be:and.....

Q10/ A. Identify this slide?



B. In some times, the slide culture technique was made for fungal identification, why?

Q11/A. Identify this slide?



B. Fungi have important role in.....

Q12/ A. Identify this slide?



B. Plant pathogenic fungi can be isolated from inside infected tissue by submerging it in the sodium hypochlorite 6% concentration, give reason?

Q13 / A. Identify this slide?



B. In direct microscopic examination for dermatophytes,..... is adding to the specimen, while in cultural examination, the specimen transfer to a Petri dish contains.....

Q14/A. Identify this sample? (Common name)



B. API is.....use for identification of.....

Q15 / A. During slide culture technique by V shaped glass the plate provided with water, give reason?

B. Sexual reproduction in *Entomophthora muscae* are formed from.....known as.....

Q16/ A. In Oil covered slants, using parafilm is better than using liquid paraffin, give reason?

B.is the parent cell splits into two equal halves, example:.....

Q17/A. Identify this slide?



B. During isolation of fungi on moist Blotting paper, non-sterilized seeds was evenly placed on three layers of moistened 9 cm diameter filter paper in sterilized Petri dishes, give reason?

Q18/ A. The mycelium of the fungus.....that isolated from Dung of amphibians and insectivorous bats is.....

B. are flagellated, motile spores produced inside structures, they are produced in lower fungi such as.....

Q19/ A. The ascocarp of Truffle are

B. *Mucor* sp. is characterized by, absent of..... but possess

Q20/ A. The characters of Cleistothecium appendages ofis sharp-pointed, with a swelling at the base.

B. In Ascomycetes, the female gametangia is called..... and male gametangia is called.....