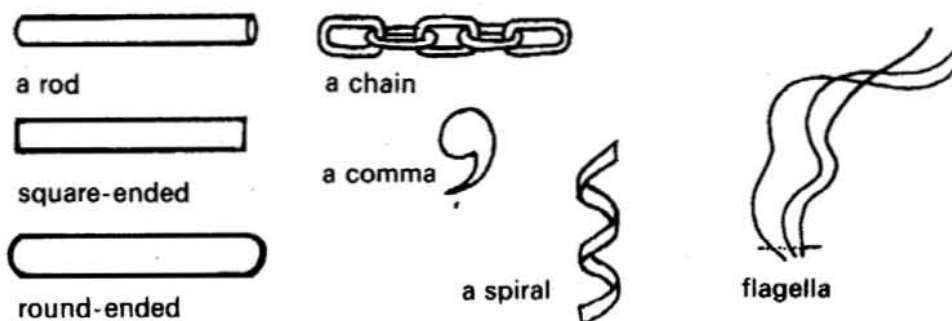


## Section 2 Development

### 5. Look and read:



#### The shapes of bacteria

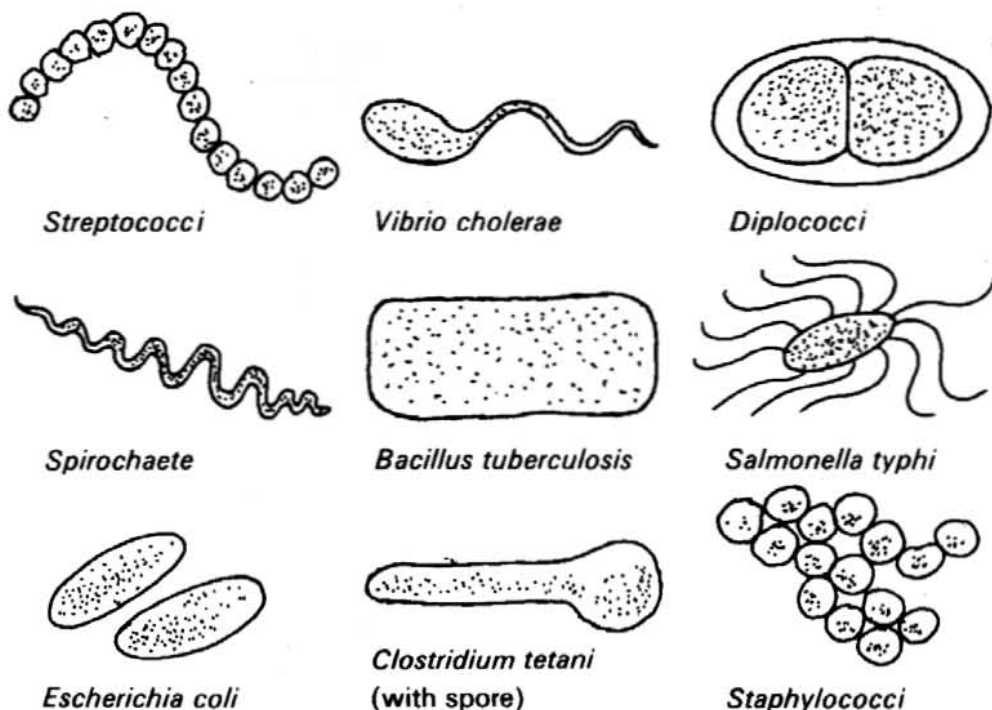
*Bacteria* (singular *bacterium*) are very small organisms with single cells. They can be divided into three groups according to shape.

*Cocci* (singular *coccus*): These are spherical in shape. Some species occur in groups; some occur in chains (*streptococci*); some have two cells joined together (*diplococci*).

*Bacilliform bacteria*: These are cylindrical or rod-shaped. Some are round-ended rods; others have square ends. Some bacilli have long flagella.

*Spirilla* (singular *spirillum*): These are spiral in shape. The bacterium which causes cholera (*Vibrio cholerae*) is comma-shaped with a single flagellum.

Look at these bacteria:



a) List each bacterium under these headings:

*Cocci*      *Bacilli*      *Spirilla*

b) Now describe the appearance of each of the bacteria in the above diagrams.

### Section 3 Reading

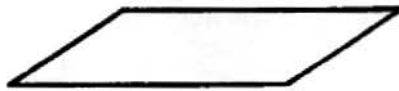
6. Look at these diagrams which illustrate words in the reading passage below:



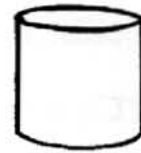
curved



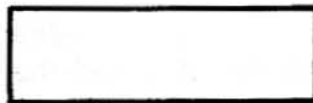
ribbon



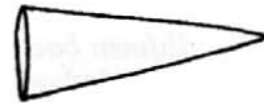
flat



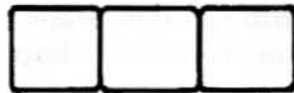
a cylindrical shape



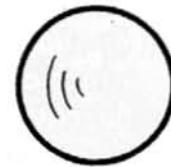
a rectangular shape



tapering



segments



a spherical shape



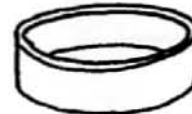
a swelling



a groove



a hook



a ring



a transverse section



a longitudinal section



the anterior end

the posterior end



These circles are evenly spaced.

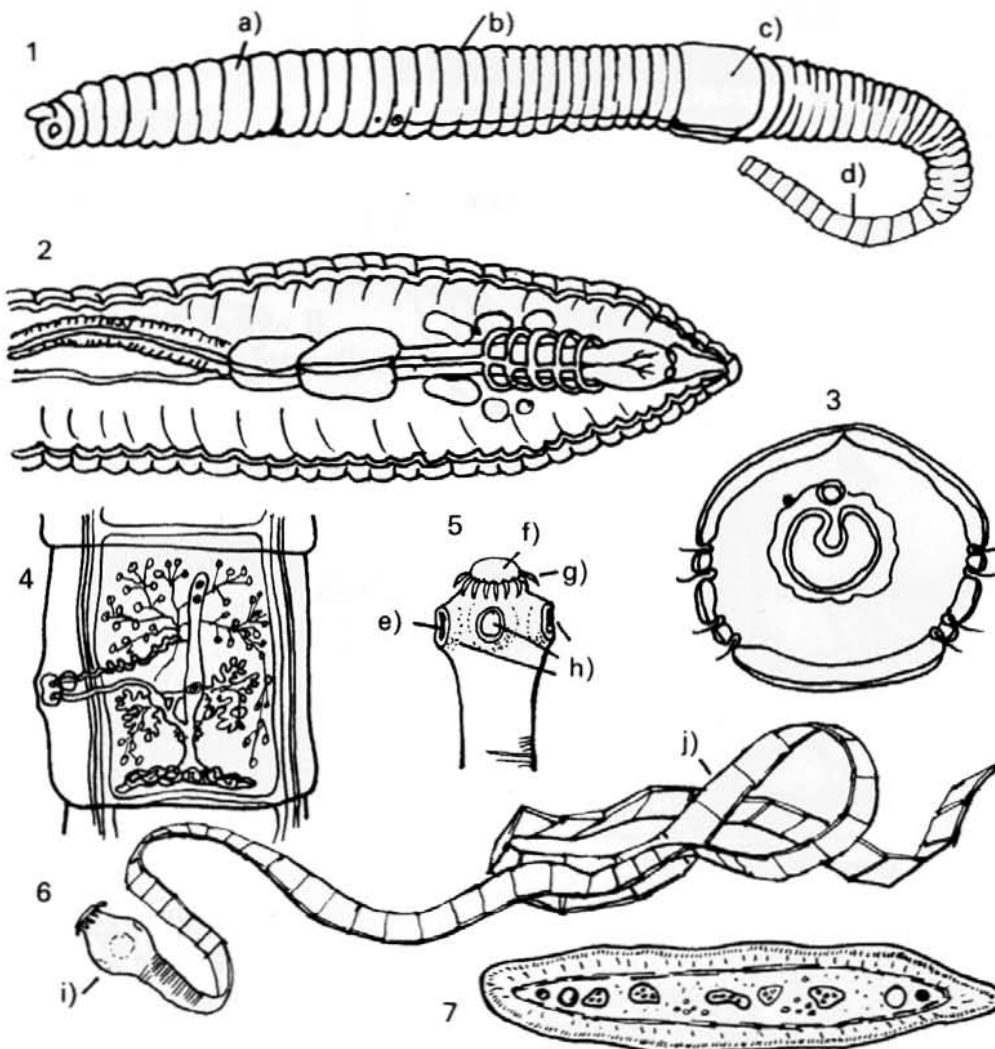
Now read these descriptions:

### Two simple invertebrates

The tapeworm is a parasite which lives in the intestines of vertebrate animals. Its body is flat and ribbon-like. The body is divided into flat rectangular segments. These are smaller at the anterior end. The head is small and spherical. It has four evenly-spaced suckers, which are circular in shape. On top of the head there is a curved projection. Around this there is a ring of hooks.

The earthworm lives in the soil. Its body is roughly cylindrical in shape. The posterior end is tapering and slightly flattened. The anterior end is slightly tapering. The body is divided by transverse grooves into about 150 rings or segments. Near the middle of the body there is a swelling, called the clitellum.

Look at these diagrams:



Now say what these diagrams show, choosing from the captions below. Give reasons for your choice.

- 5 *Example:* Diagram (1) shows an earthworm. It is roughly cylindrical in shape and one part is swollen.

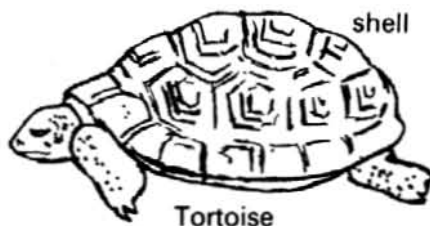
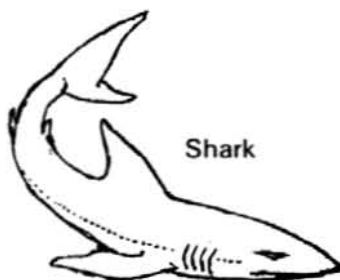
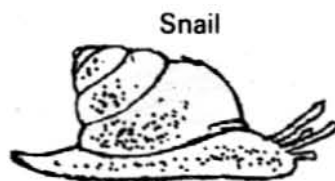
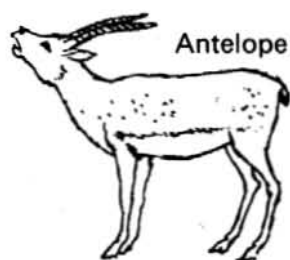
The head of a tapeworm  
 The transverse section of an earthworm  
 The longitudinal section of a tapeworm  
 An earthworm  
 The longitudinal section of an earthworm  
 A tapeworm  
 The transverse section of a tapeworm

7. Match the following with the letters in diagrams (1), (5) and (6) above.

- |                       |                       |
|-----------------------|-----------------------|
| a circular part       | a swelling            |
| a spherical part      | a cylindrical segment |
| a ring of hooks       | a flattened part      |
| evenly spaced parts   | a curved projection   |
| a rectangular segment | a transverse groove   |

## Section 4 Listening

8. Look at these diagrams. Then listen to the sentences. Write down whether each sentence is true or false.



Now listen to each sentence again. Write them down, correcting the false statements.