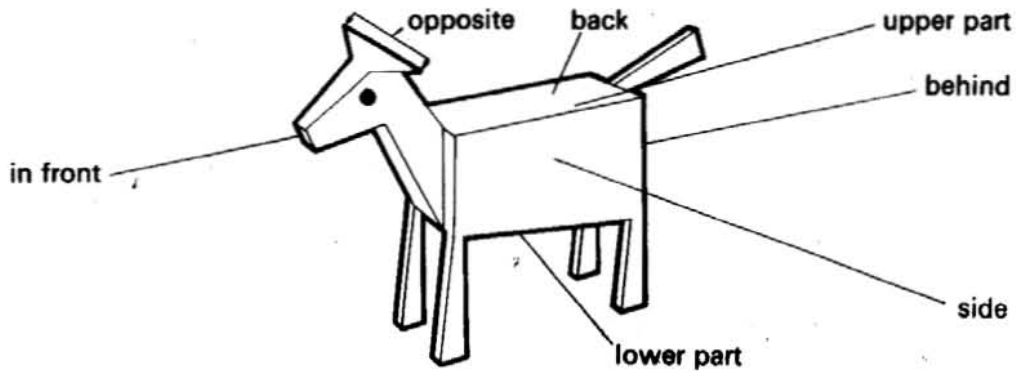


Section 2 Development

5. Look and read:

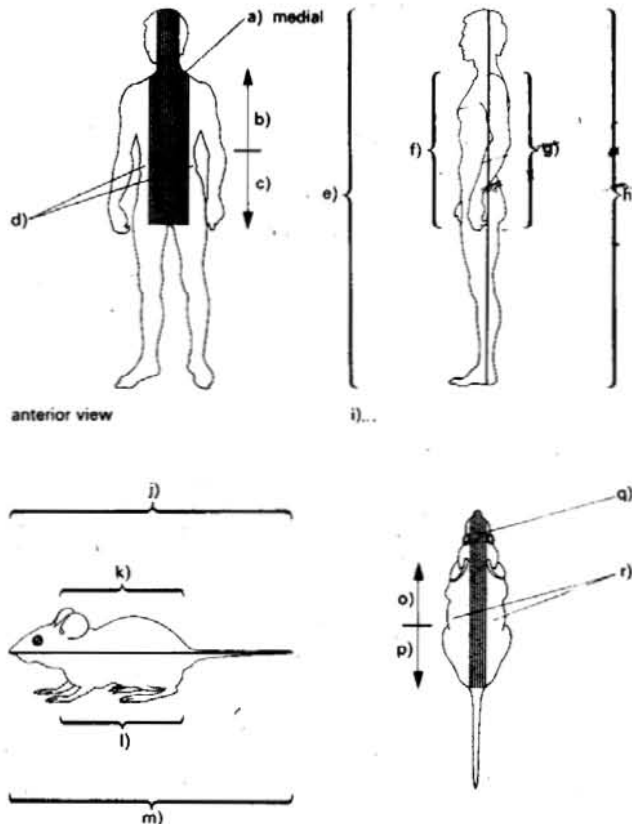


In biology, special words are used for the position of parts of animals. The upper parts of the body are *superior* to the lower parts, which are *inferior*.

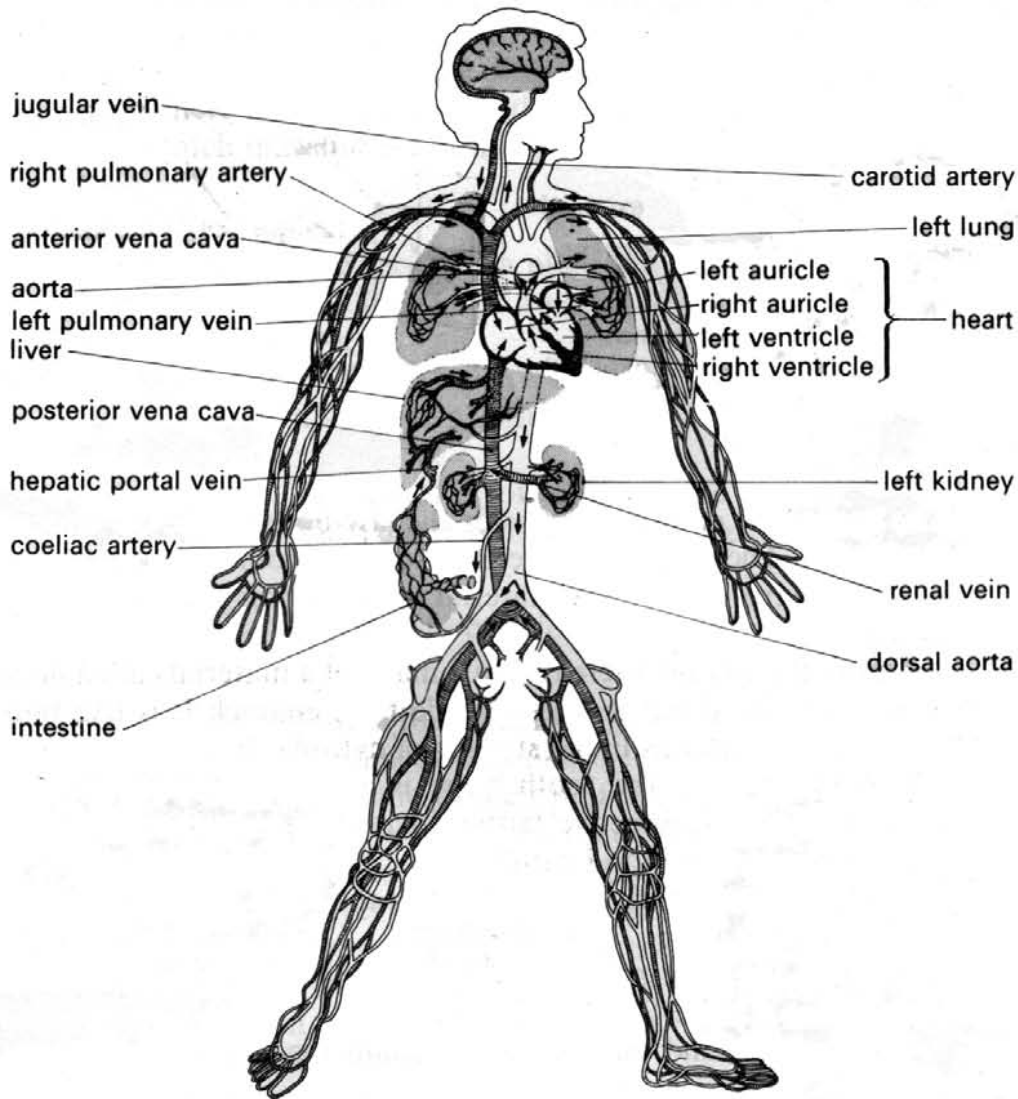
Posterior means behind and *anterior* means in front. Parts which are at or near the back of the body are *dorsal*. Parts which are opposite the back are *ventral* (i.e. near the stomach).

Thus in human beings, the ventral parts are anterior and the dorsal parts are posterior, whereas in other animals the ventral parts are inferior and the dorsal parts are superior. The central part of the body, running from head to tail, is called the *median*. Parts in this region are *medial*, whereas parts near the sides of the body are *lateral*.

Add labels and captions to these diagrams:



6. Look at this diagram:



The human blood system

Now say whether these statements are true or false. Correct the false statements.

- The auricles of the heart are superior to the ventricles.
- The pulmonary vein enters the heart by the left auricle.
- The pulmonary artery takes blood from the left ventricle to the liver.
- The aorta is posterior to the heart.
- The anterior vena cava enters the heart by the right ventricle
- The kidneys are medial to the aorta and posterior vena cava.
- In human beings, the anterior vena cava is inferior to the heart.
- The blood from the intestine passes through the coeliac artery to the liver.
- The jugular vein is in the region of the neck.
- The renal veins lie between the kidneys and the vena cava.
- In biological diagrams, organs on the left side of the body are shown on the right.