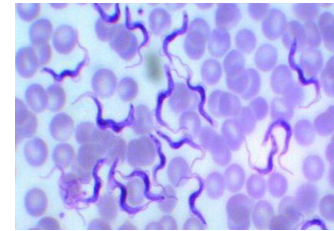


Q1/A. Identify the slide?



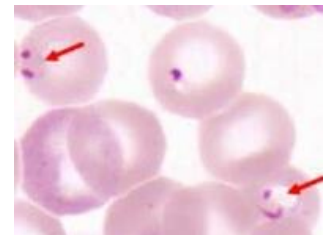
B. Do this parasite **direct** or **indirect life cycle**? Why?

Q2/ A. Identify the slide?



B. Colony is hydroid form that bears **3** types of **polyps** which are, and

Q3 A. Identify the slide? And point part



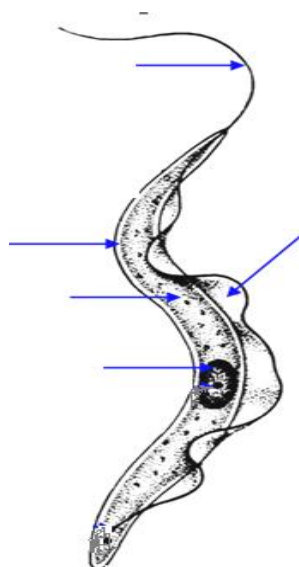
B. write **hosts** of it?

Q4/A. Identify the slide?



B. write **water pore system** of it?

Q5/ label the point parts?



Q6/ A-Identify the slide?

B-name this processes? And write **class** and **order** of it?

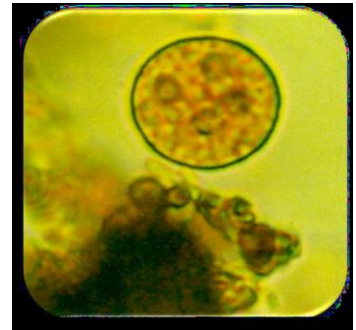


Q7/ What's the **meaning** of the following

- 1- Diploblastic
- 2- Hermaphrodite

Q8/A. Identify the slide?

B. **Classify** it?



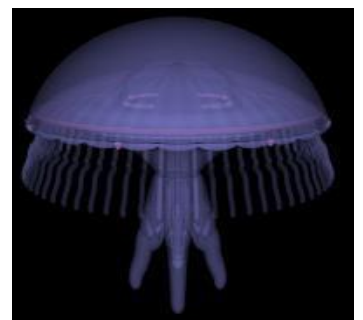
Q9/ A. Identify the sample?

B. What's the distinguish character of it?

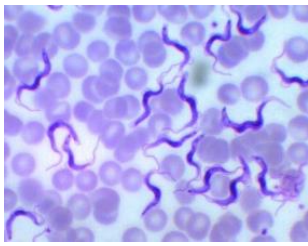


Q10/A. Identify the slide?

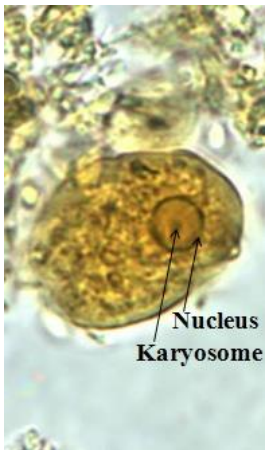
B- fill the blanks in life cycle stages of it?



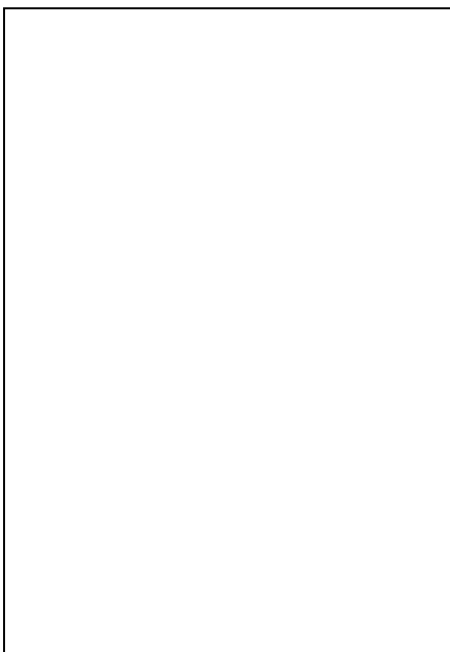
Gamete → → → → → → → Adult



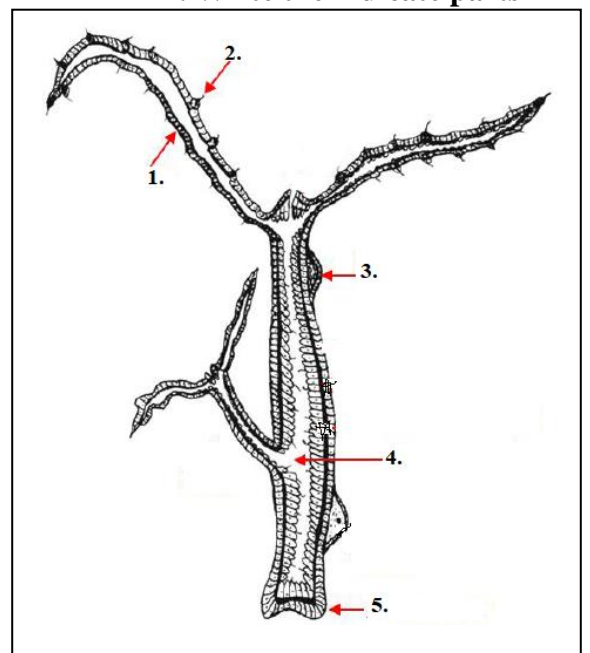
Q1/A. Identify the slide?
B. Write type of its life? And asexual reproduction



Q2/1. Draw and label trophozoite stage of *Trypanosoma sp.*

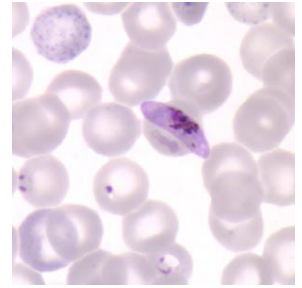


2. Write the indicate parts



Q3/A. Identify the slide?

B. indicate the pointed part and write name of this process?



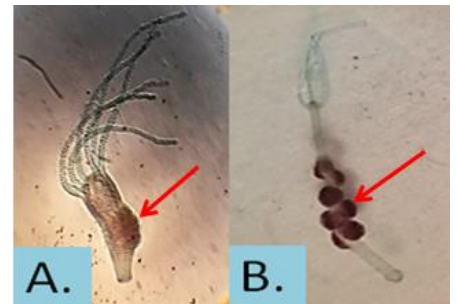
Q5/A. Identify the slide?
B. Write another stages of this species?

Q6/ A. Identify the sample?
B. What's the distinguish character of it?



Q7/ A-Identify the slide?

B-Label the pointed parts?

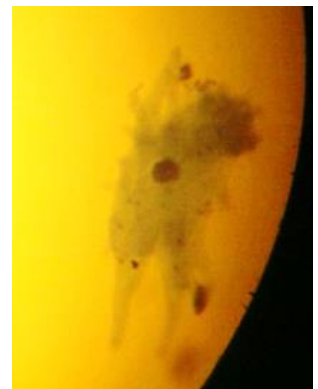


Q8/ What's the meaning of the following

1. Diploblastic
2. Hermaphrodite
3. Nematoblasts

Q9/A. Identify the slide?

B. Classify it?



- Q10/ A. Identify the slide?**
B. Write about coenosarc of it?



- A. Identify the sample?**
B. What's the distinguish character of it?



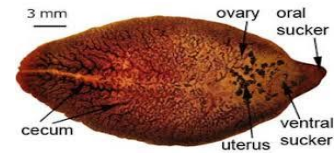
- A. Identify The Slide**
B. Write common name of It
C. Write Water Current System



- A. Identify the slide**
B. Write types of Reproduction way
C. Lifecycle includes while stage is absent.



Q1/A. Identify the slide?



B. Write the indicate parts

Q2/ A. Identify the slide?



B. They are live on animals,
and They feed on

Q3 A. Identify the slide? And point part



B. write **Habitat**, **Common name** and **disease name** of it?

Q4/A. Identify the slide?



B. What are differences between **A & B**?

Q5/

A. Identify the slide?



B. Mention **class** and **family** of it?

Q1/A. Identify the slide?

B. count other species according to site of infection with exampl



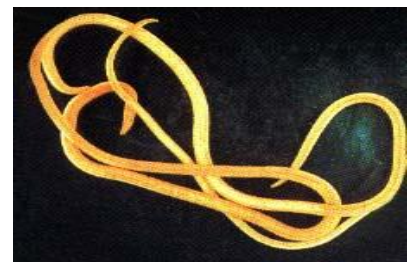
Q2/ A. Identify the slide?

**B. They are live on animals,
and They feed on**



Q3 A. Identify the slide?

B. write Habitat, Common name and disease name of it?



Q4/A. Identify the slide?

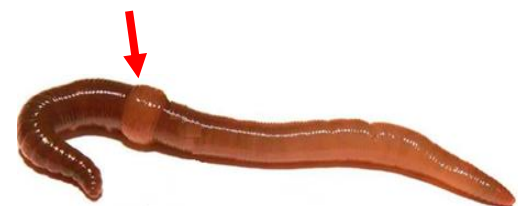
**B. What are differences between A & B?
write the main character?**



Q5/

A. Identify the slide? Write the point part?

B. write class and family of it?



Q6/ A-Identify the slide?

B-Classify it

Phylum:

Class:

Order:



Q7/ A. Identify the sample?

B. put True (T) or False (F), and correct the underline phrase if false

1. Cephalothorax covered dorsally by triangular carapace.
2. bears five pairs of walking legs.
3. Silk apparatus always present at the end of cephalothorax, and Poison apparatus opens on the fangs of the pedipalp.

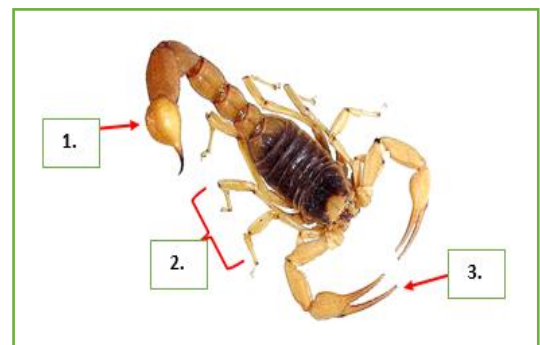
Q8/A. Identify the slide?

B. chose the correct words inside bracket

1. The cephalothorax mean head + (two-three-four) thoracic segments, Thoracic region (four-five-six) free segments and abdomen (two-three-four) segments.
2. Last abdominal segment bear (one- two-three) pair of caudal styles.

Q9/ A. Identify the sample?

B. writ the point parts



Q10/A. Identify the slide?

B- complete the life cycle stages of it?



Gamete → → → → Adult