

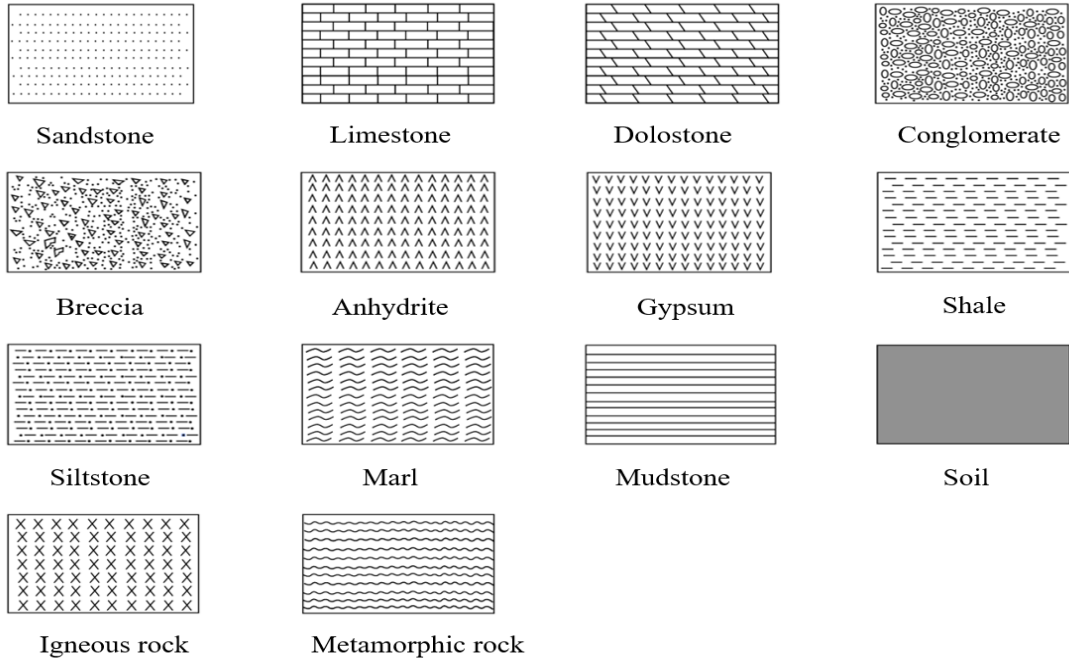
Geological Time Scale

The geologic time scale is considered the calendar of earth history. On the geologic time scale, the oldest events are found at the bottom and the youngest events are found at the top. Geologists divided the Earth history into the following units: *eons*, *eras*, *periods*, and *epoch*. Compare the different life forms during each period as well as the evolution of life until the present day.

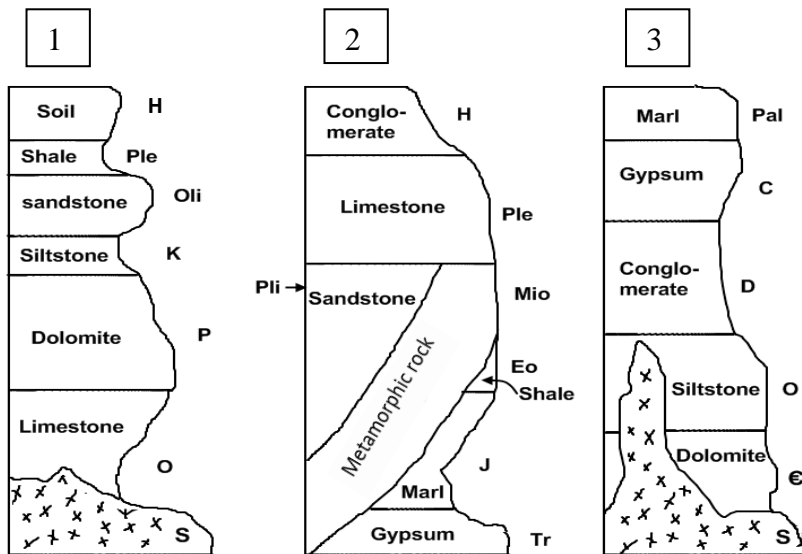
The most recent 13% of geologic time, from 541 million years ago to the present, is called the Phanerozoic Eon (phaneros is Greek for “evident”).

Eon	Era	Period	Epoch	Map Symbol	
Phanerozoic Eon	Cenozoic	Quaternary	Holocene	H	
			Pleistocene	Ple	
		Tertiary	Neogene	Pliocene	Pli
				Miocene	Mio
			Paleogene	Oligocene	Oli
		Eocene		Eo	
		Paleocene		Pal	
		66 my		Cretaceous	K
		Mesozoic	Jurassic	J	
	Triassic		Tr		
	245 my		Permian	P	
	Paleozoic	Carboniferous	Pennsylvanian subperiod		C
			Mississippian subperiod		
		Devonian	D		
		Silurian	S		
		Ordovician	O		
		541 my	Cambrian	€	
	Proterozoic Eon =Precambrian				P€

Following are the common lithologic symbols



Exercise: Construct the complete geological column from the combination of the sections (1, 2 and 3) according to the **Geological time scale** and **lithology** for the beds. Make the oldest bed at the bottom and youngest at the top of column.



Age				Lithologic symbol	Bed name
EON	ERA	PERIOD	EPOCH		