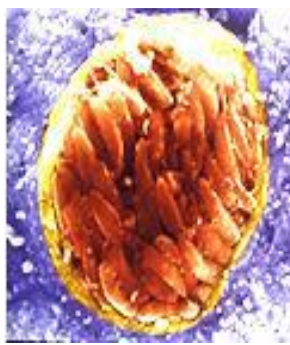


Q1/identify the slides (only 3)



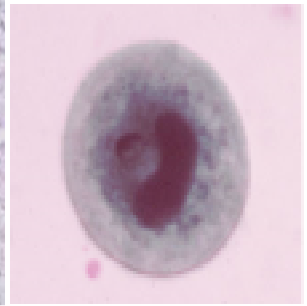
1.



2.



3.

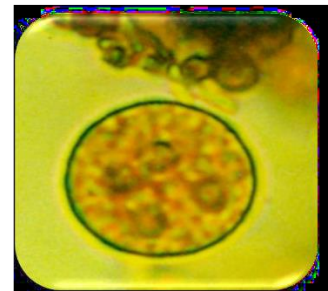


4.

Q2/

A. Identify the slide

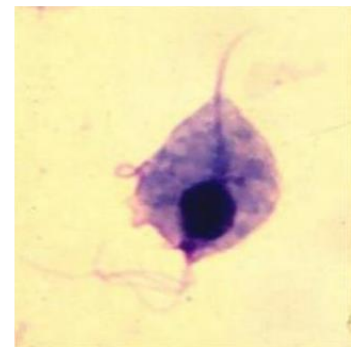
B. What is the infective stage ?



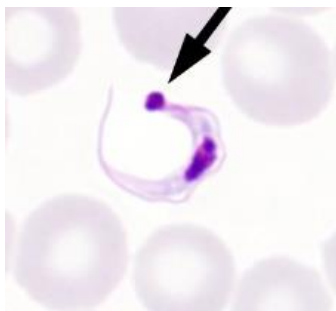
Q3/ diagnosis of *Trichomonas vaginalis*

Q4/A. Identify the slide

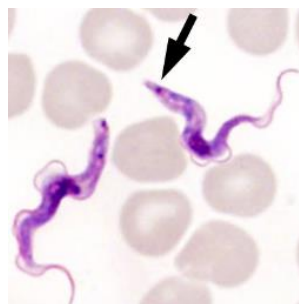
B. write infective stage and diagnosis stage



Q5/A. Identify the slides 1 and 2



1.

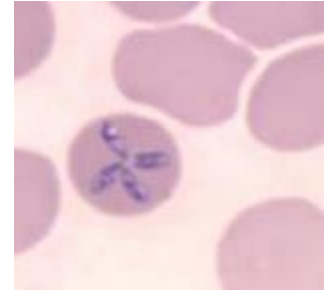


2.

B. what are the differences between two slides, in

Characters	1	2
Shape		
Vector		
Disease		

Q6/ A. Identify the slide B. write 2 symptoms



Q7/ A. Identify the slide

B. Count other species of this genus?



Q8/A/ Identify the slide

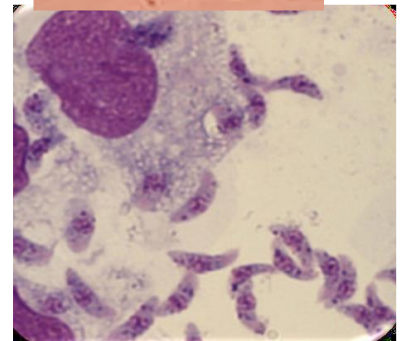
B/ put True (T) or False (F), and correct the false phrase if presents

1. This parasite is ciliate.
2. The intermediate host: cat
3. Have one pseudopodia.



Q9/ A. Identify the slide

B/ Count infective stages



Q10/ Draw and lable stages of *Trypanosoma* sp.