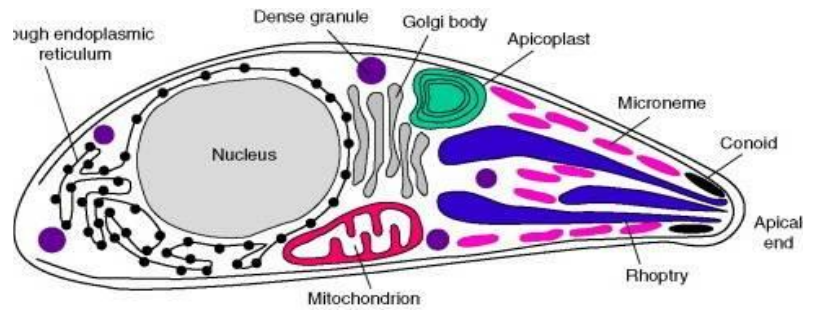


**Kingdom: Protista**  
**Phylum: Protozoa**  
**Sub Phylum: Apicomplexa**  
**Class: Sporozoa**  
**Order: Eucoccidiida**  
**Family: Sarcocystidae**  
***Toxoplasma gondii***



**Habitat:** monocytes, macrophage, epithelial cells of liver, lung, spleen, lymph nodes, body fluids and tissue cells

**Definitive host:** Cat.

**Intermediate hosts:** Most mammals and birds.

**Infective Stage:** Tachyzoites, Tissue cysts (bradyzoites), and Oocyst (sporozoites)

**Disease:** Toxoplasmosis

**The major forms of the parasite, All parasite stages are infectious:**

1. **Oocysts** (containing sporozoites), which are shed in the feces.
2. **Tachyzoites** (Trophozoite), rapidly multiplying organisms found in the tissues.
3. **Tissue cysts** (Bradyzoites): walled structures slowly multiplying, often found in the muscles and central nervous system (CNS).

**Diagnosis of Toxoplasmosis**

1. **Skin test**
2. **Tissue Culture**
3. **Polymerase Chain Reaction (PCR)** on body fluids, CSF, amniotic fluid, and blood.
4. **Detection of *T. gondii* antigen** in blood or body fluids by (**ELISA**) technique.

