

1. Intestinal fluke

Kingdom: Animalia

Phylum Platyhelminthes (flatworms)

Class Trematoda (flukes)

Order: Prosostomata

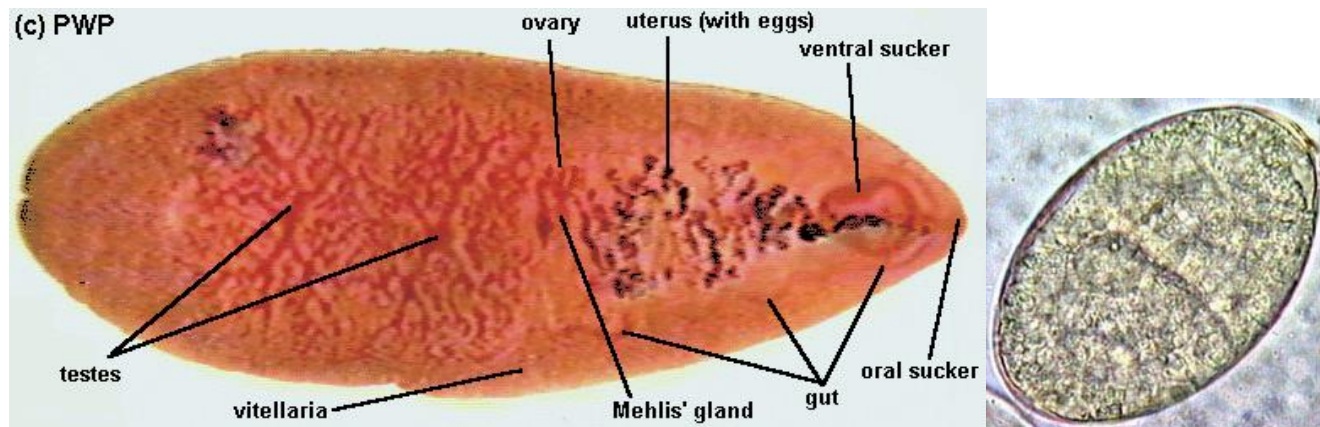
Family Fasciolidae

***Fasciolopsis buski*– The Giant Intestinal Fluke**

Morphology

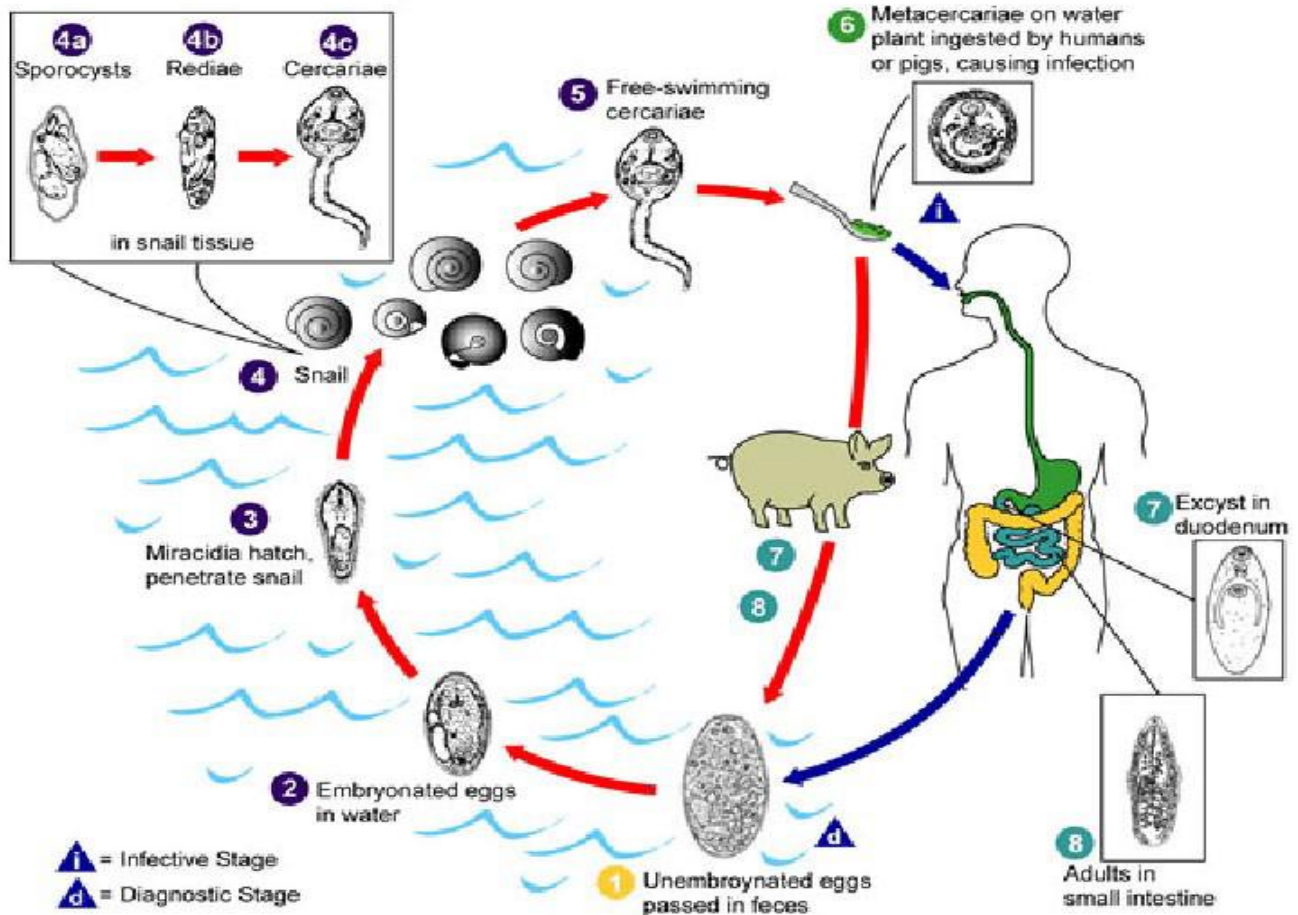
Adult: (20-75mm x 8-20mm), elongated, 2 testes are dendritic in the posterior half, branched ovary lies to the right of the midline, intestinal ceca are unbranched and reach up to posterior end.

Egg: Oval, yellow-brown eggs, operculum, Indistinguishable from eggs of *F. hepatica* and *F. gigantica*



***Fasciolopsis buski*– The Giant Intestinal Fluke**

- **Habitat:** small intestine
- **Definitive host:** human and pigs
- **Intermediate host:** *Planorbis* sp. or *Segmentinas* sp. snails
- **Aquatic plant vectors:** caltrops, water chestnut, etc.
- **Infective stage:** metacercaria on water plants.
- **Diagnosis stage:** detection of parasite eggs in stool.
- **Disease:** Fasciolopsiasis
- **Treatment:** Praziquantel



Kingdom: Animalia
Phylum Platyhelminthes (flatworms)
Class Trematoda (flukes)
Order: Heterophyoidea
Family Heterophyidae
Heterophyes heterophyes

Morphology

Small flukes found in the small intestines of fish-eating birds and mammals, (1.0- 1.7mm) X 0.35mm. Elongated, some species have a genital sucker, testes – variously arranged in the posterior part of body, ovary – globular or slightly lobed; located, submedian, pre- or post-testicular.

Egg: light brown, ovoid, operculate.



- **Definitive host:** human, birds, dogs and fishes.
- **First Intermediate host:** *Pirenella* or *Cerathidea* snails
- **Second Intermediate host:** fishes (Mugil and Tilapia)
- **Infective stage:** ingestion undercooked meat containing metacercariae
- **Diagnosis stage:** detection of eggs in stool
- **Treatment:** Praziquantel

