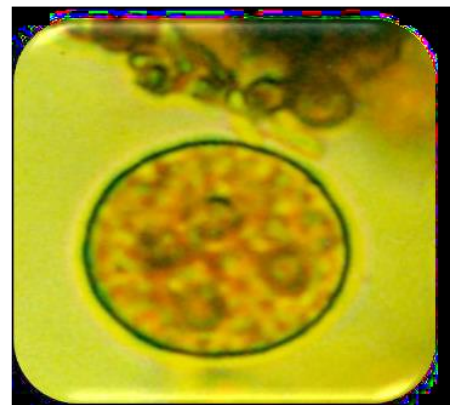


Q1/identify the slides



. Q2/ What is the infective stage and treatment of it?



Q3/ A. write species of *Plasmodium*

Q4 Write the following:

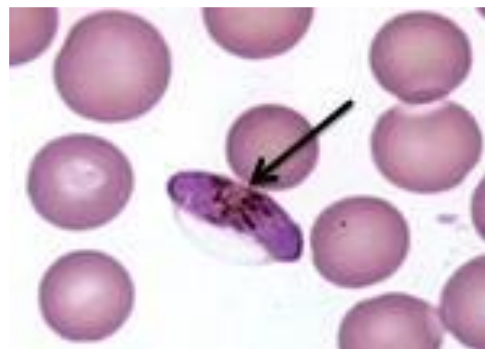
Q5/Phylum.....

Q6/Subphylum.....

Q7/Class.....

Q8/A. Identify the slide (pointed part)

Q9/ Write hosts of it



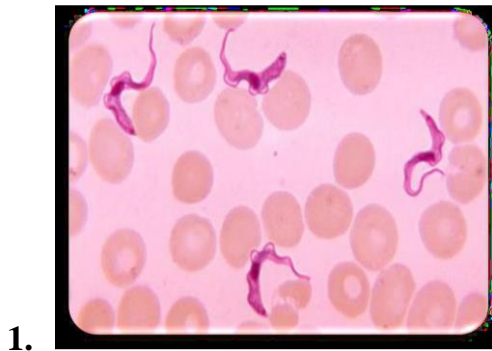
Q10/. Identify the slide

Q11/ Write intermediate host and disease name of it

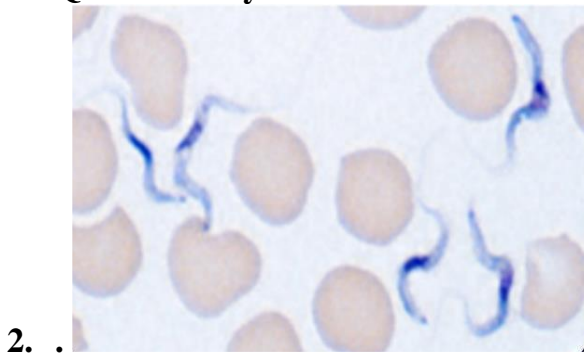
Q12/ write infective stage and diagnosis stage



Q13/. Identify the slides 1 and 2



Q14/. Identify the slides 1 and 2



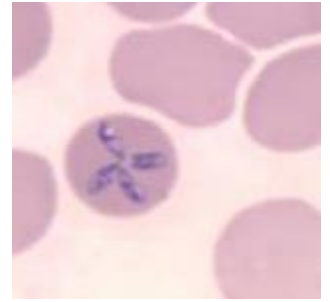
Q15/ what are the differences between two slides, in

Characters	1	2
Shape		

Q16/ what are the differences between two slides, in

Q16/ what are the differences between two slides, in		
Vector		
Disease		

Q17/. Identify the slide



Q18. write four symptoms

Q19/ A. Identify the slide

Q20/ Count other species of this genus?

Q21/ Write diagnostic stage and vector?



Q22/ Identify the slide

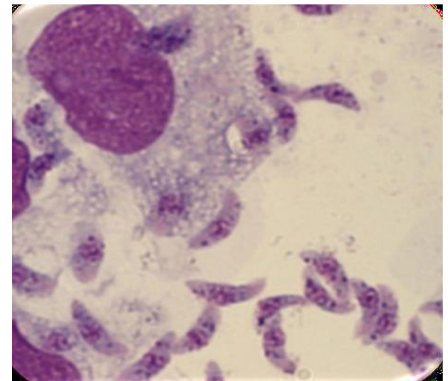
Q23/ put True (T) or False (F), and correct the false phrase if presents

1. This parasite is ciliate.
2. The intermediate host: cat
3. Have one pseudopodia.



Q24/ Identify the slide

Q25/ Count infective stages



Q26/Write general characters of giardia

Q27 /Write general characters of trichomonas

Q28/Write general characters of enterobius

Q29/Write general characters of entamoeba

Q30/Write general characters of coccus

Q40/DIFFERENCE BETWEEN TRICHOMONAS AND GIARDIA