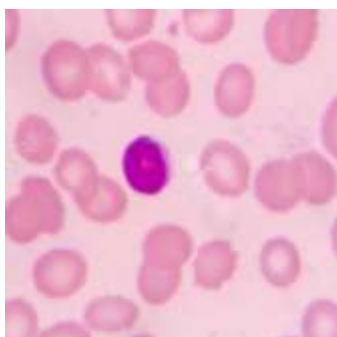


1. The cellular region of onion root tip are ,
..... and
2. Explain the steps for preparing the aceto-orcein stain by diagram.?
3. Bouin's fluid is a fixative that consist of ,
..... and
4. Define Epidermis
5. , and are
biological causes that lead to poor blood smear
6. Define Microtome
7. Putrefaction means
.....
8. Define Hematopoiesis
9. What is Paraffin method
10. Before we start any of the microtechnique methods we must apply some
rules in order to achieve successful work, what are these rules?
11. Write the differences between guard cells and epidermal cells.
12. Why did we use and warm 10% of HCl in the maceration and squashing
method?
13. What is the purpose of fixation?
14. Draw and label cell cycle.
15. Identify the figure



16. Identify figure



17. What is the name of the instrument?
18. In which step do we use this instrument?
19. What are the next and previous steps?
20. Is the block holder movable?
21. What is the best thickness of sections for light microscopic examination?
22. Formalin buffer is a fixative that consists of



_____, _____ and _____

23. Putrefaction means _____.
24. In our lab, we anesthetized rats with _____ and then sacrificed the rats to remove any organs we needed.
25. Polyvinylpyrrolidone is an example for _____ media, while Canada balsam for _____.
26. Why in clearing and infiltration steps of the paraffin method, we can't use plastic containers or tubes?
27. Define Trimming
28. Write about Eosin
29. Define Free hand sectioning
30. Before we start any of the microtechnique methods we must apply some rules in order to achieve successful work, what are these rules? (2 Marks)
31. Identify this step,
32. Write the name of the previous step. (2 Marks)



100%

95%

70%

33. Identify the figure and write the uses of each of it



34. Write the components of Mayer's stick.