

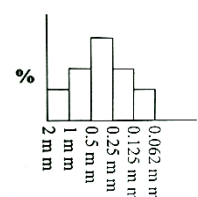
Q1/ Fill the blank in the following statements with a proper word(s): (30 marks)

- 1- The matter is used to grinding.
- 2- Embry and Klovan (1972) classified coarse-grained (>2mm) skeletal grains into..... and rocks.
- 3- Wadells rule for rounding is
- 4- Folk classification is based on but Dunham classification is based on.....
- 5- write three types of vectorial sedimentary structures....., ,
- 6- Draw palaeocurrent direction for trough cross-bed towards 175

**Q2/ Correct the false statement(s):
the auxiliary verbs)
marks)**

**(Do not change underline words and
(16**

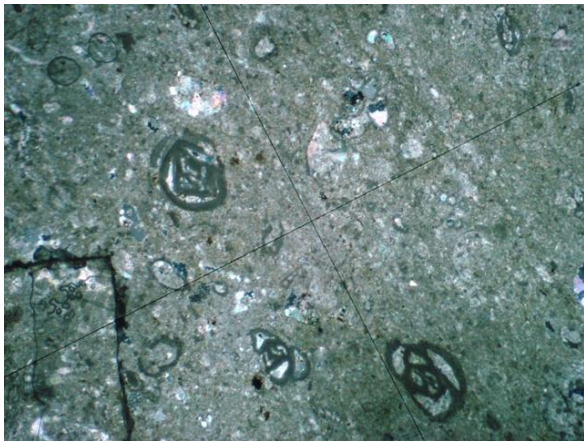
- A- Rudistone in carbonate rocks is equivalent in size to conglomerate in clastic rock ()
- B- In modified Dunham scheme subdivision of boundstone is not existed. ()
- C- Systematic rock sampling is for those places has thin and uniform succession ()



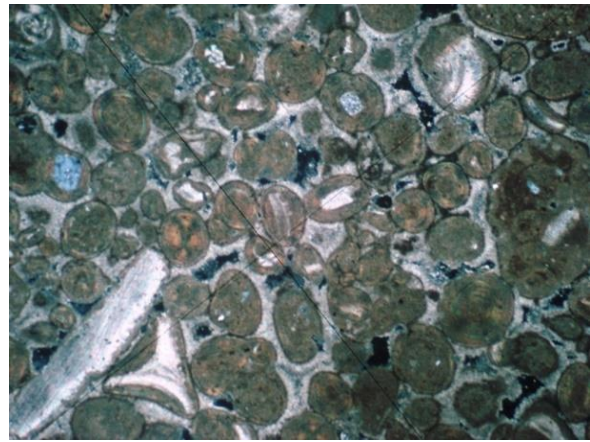
- D- This histogram represents polymodal graphical presentation (.....)

Q3/ Answer the following:

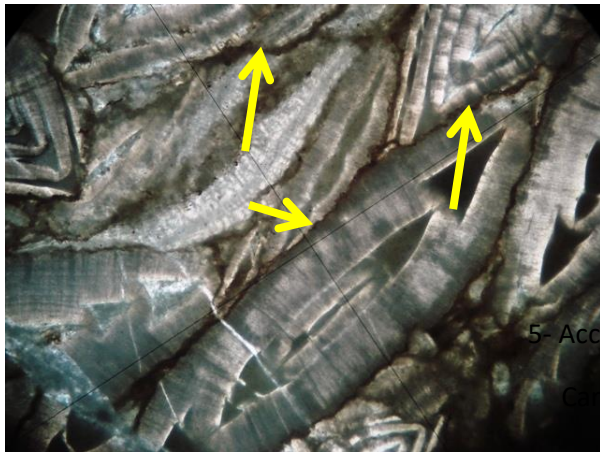
(12 marks)



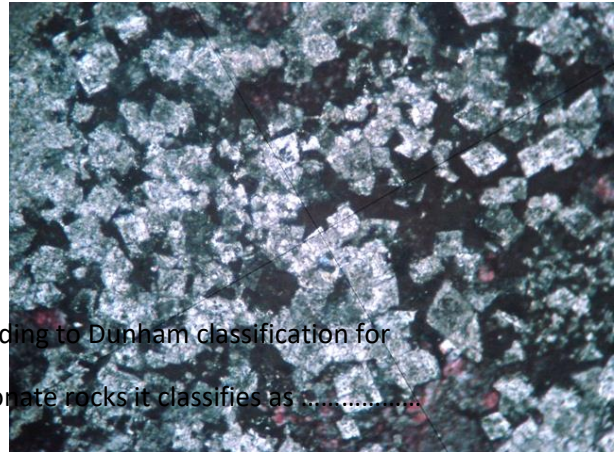
According to Dunham classification for Carbonate rocks it classifies as



According to Folk classification for carbonate rocks it classifies as



This diagenetic process (yellow arrow) in carbonate rock is



This diagenetic process in carbonate rock is

Q4/ Construct a pie diagram representing the following lithologies: -(12 Marks)

Limestone 30, Sandstone 18, Shale 15, Igneous rocks 12, and Siltstone 8

Q5/

(30 marks)

- i. Draw a histogram, frequency curve and cumulative frequency curve for the following grain size analysis.
- ii. Find all the statistical parameters (M_o , M_d , M_z , δ , S_k , and K_G).

| Φ | Wt.gr |
|---------|-------|
| -2 - -1 | 0.20 |
| -1 - 0 | 1.80 |
| 0 - 1 | 57.20 |

| | |
|-------|-------|
| 1 - 2 | 39.10 |
| 2 - 3 | 0.41 |
| 3 - 4 | 0.10 |
| 4 - 5 | 0.00 |