

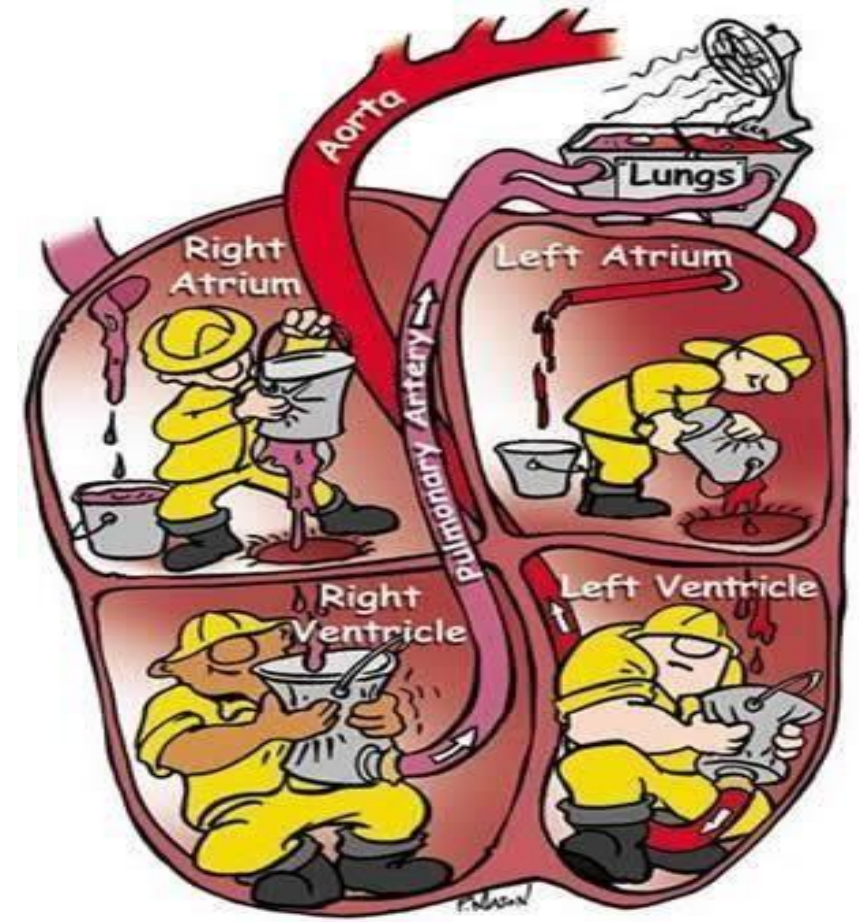


Medical Physics Laboratory

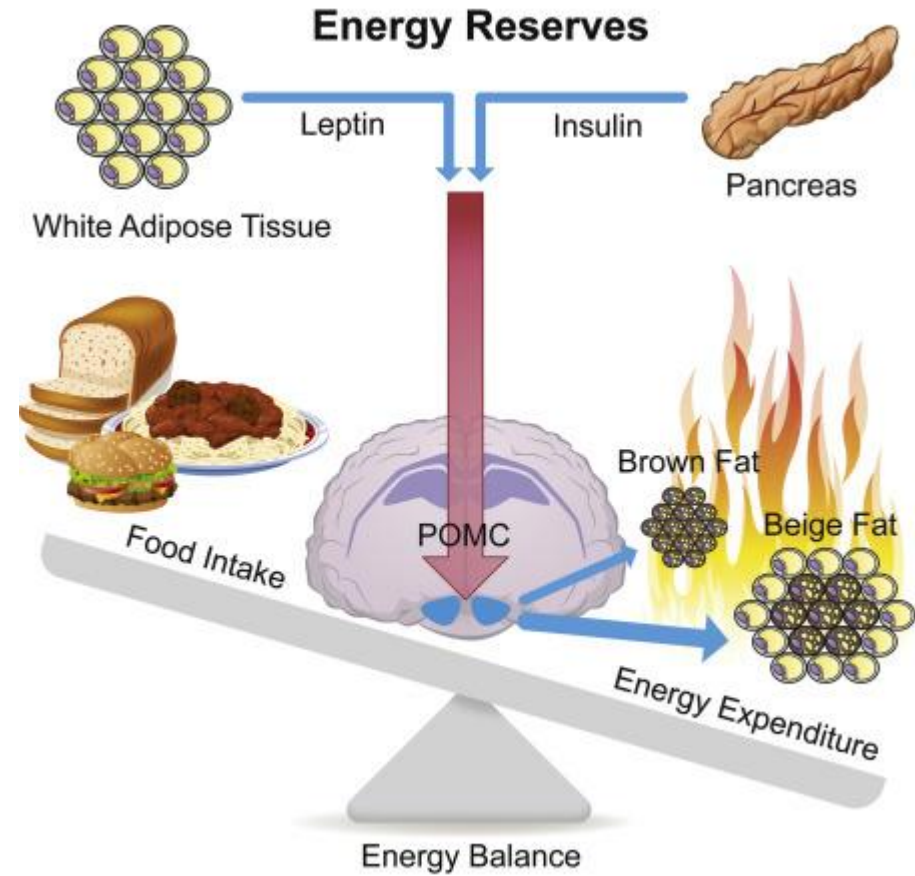
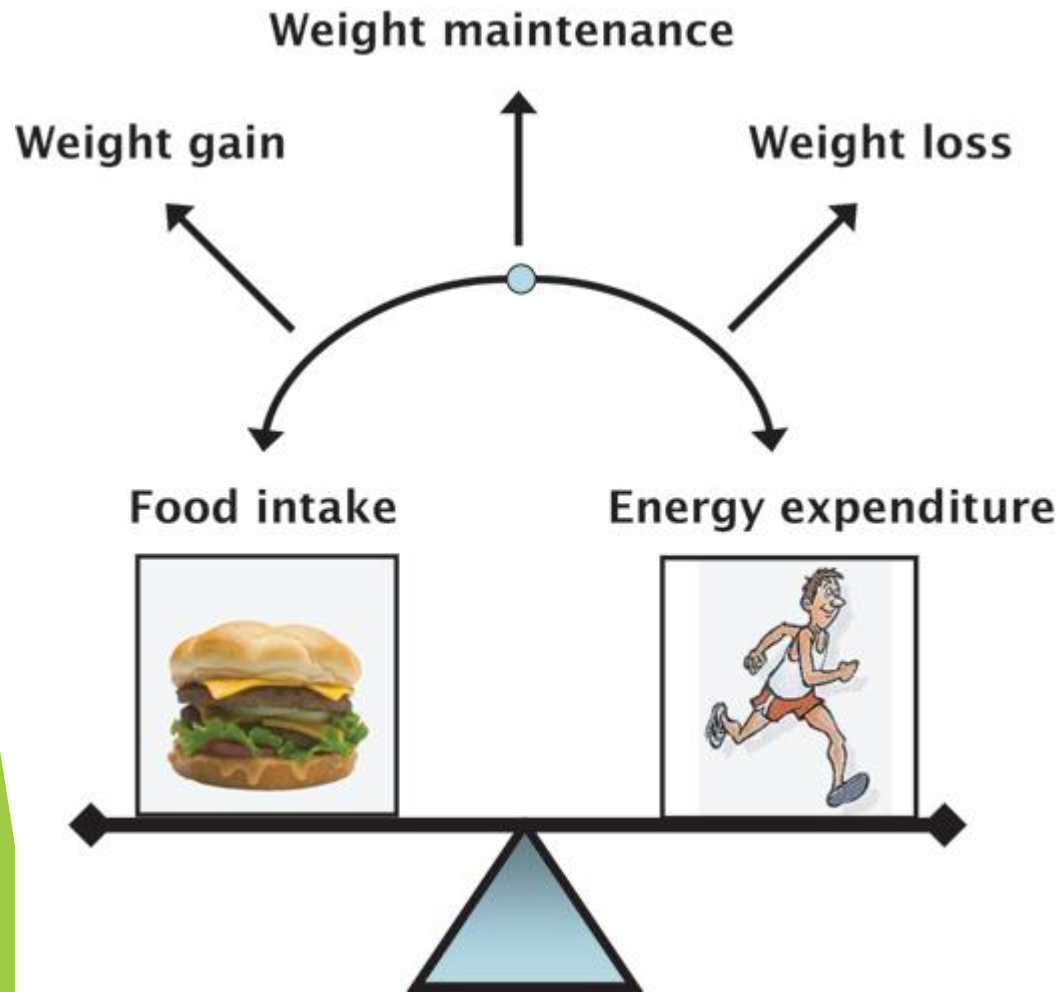
SECOND SEMISTER

**College of Science
2022-2023**

SECOND SEMISTER EXPIRMENT



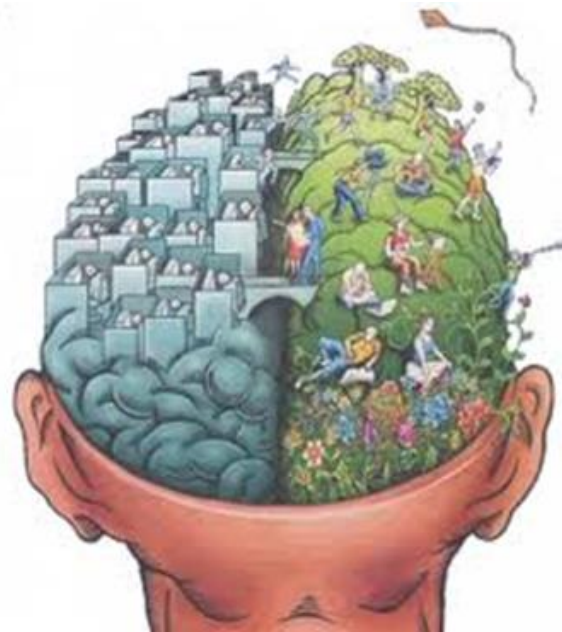
1-Obesity assessment and Daily Caloric



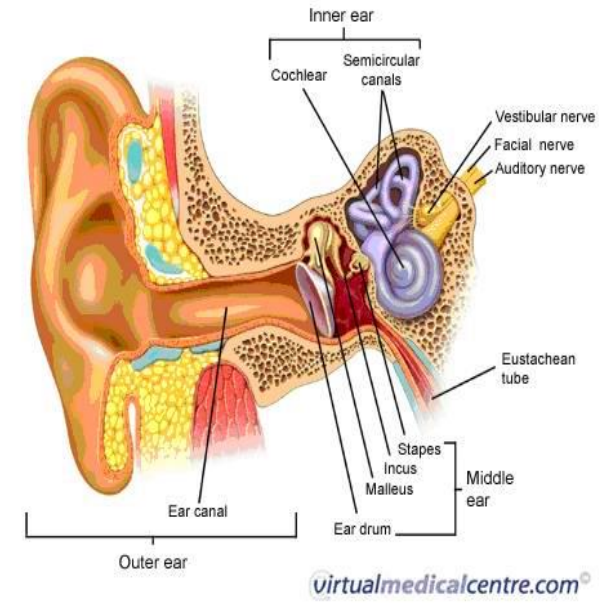
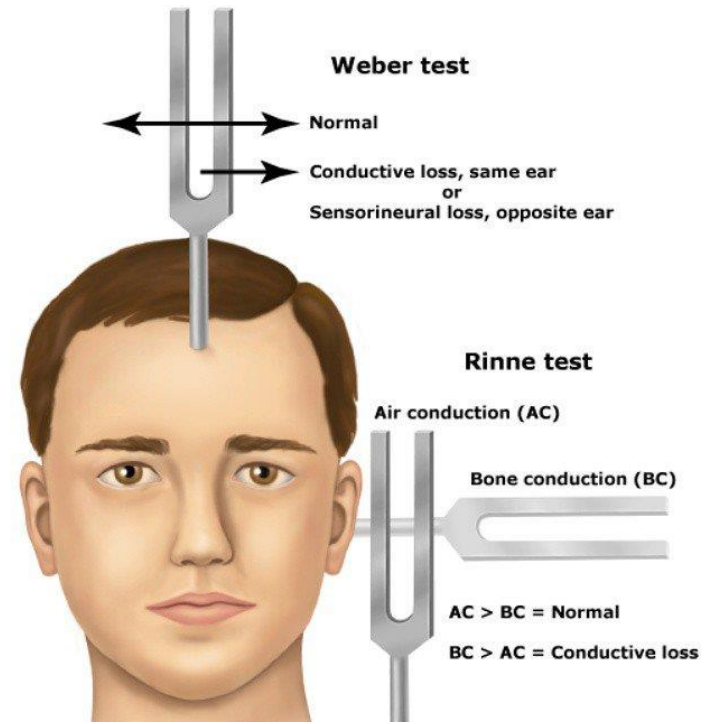
2- Reflex Physiology



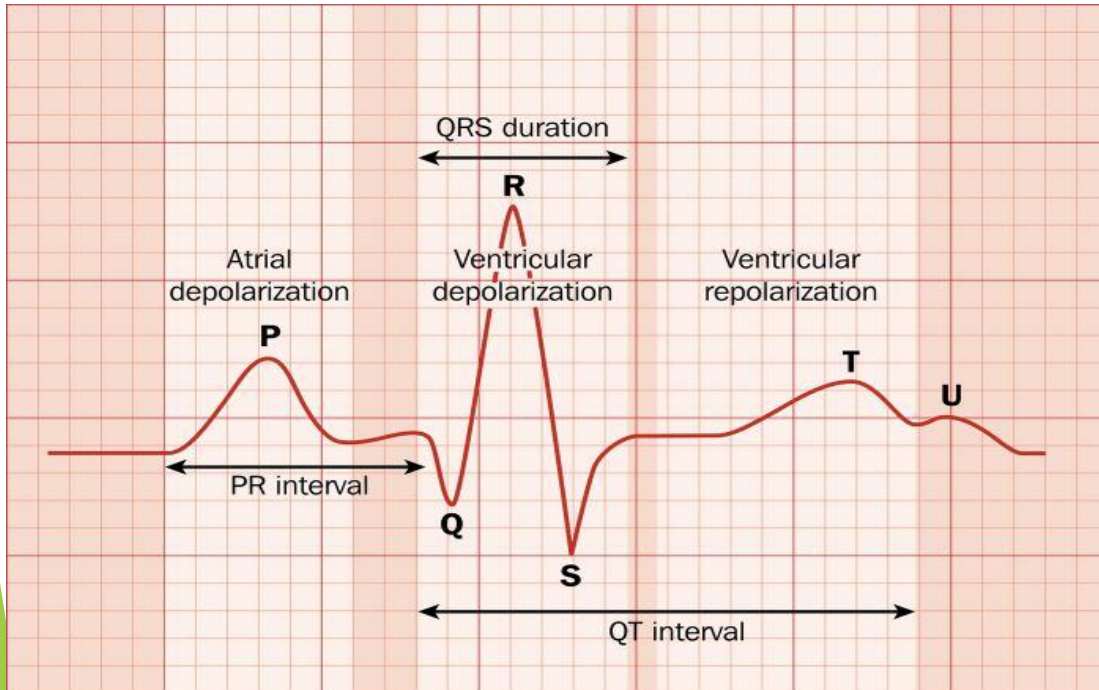
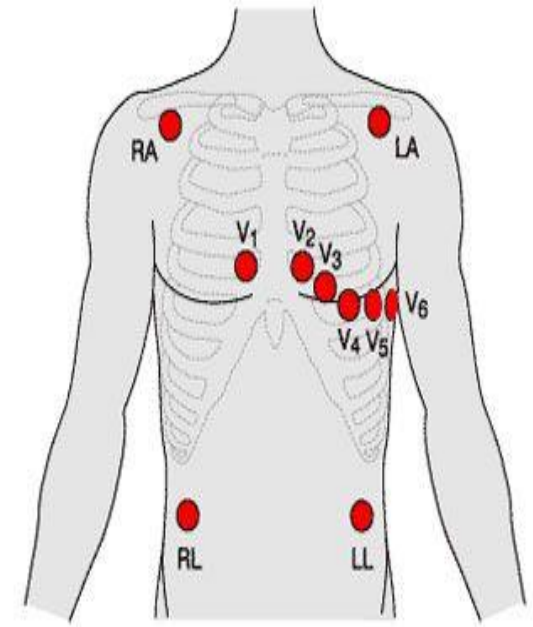
3- Mental Test



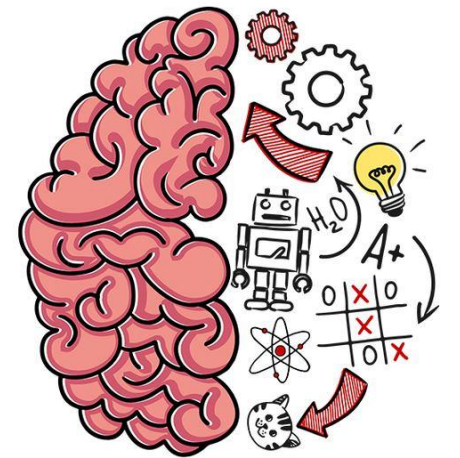
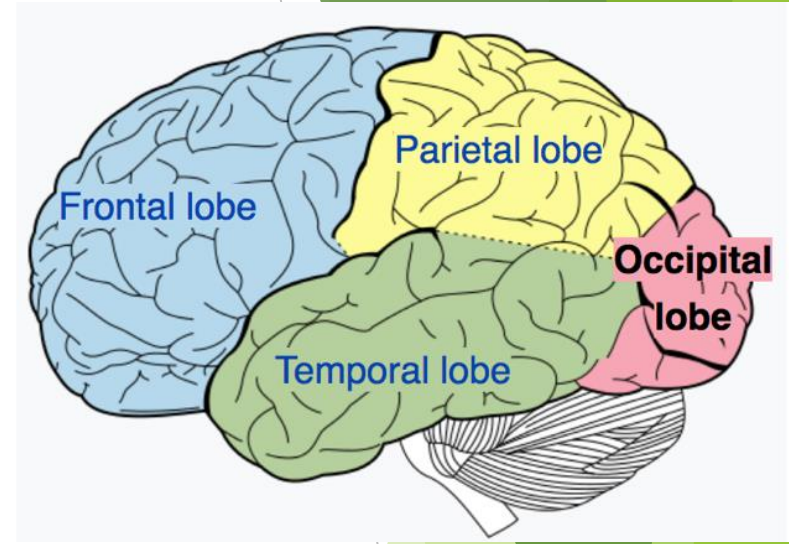
4-Hearing Test



7-Electrocardiograph (ECG)



8-Brain Test (EEG)



Medical Lab requirements:-

- 1- no report
- 2- weekly quiz
- 3- send your data and graph to
e-mail:- bio21medical@gmail.com
- 4- wearing jumpers
- 5- grade of lab :- quiz+ graph and
data taken+ monthly exam



Practical part

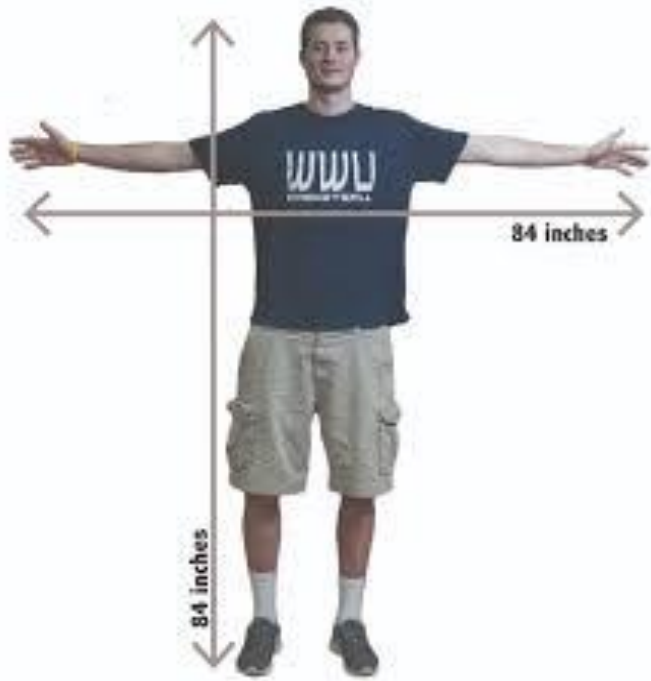
- 1- Measure Weight
- 2- Measure Of height
- 3- Rate Of Blood
- 4- Surface Area Of Human Body
- 5- measure upper limb

Name	Hight(H)/cm	Weight(W)/kg	Blood rate/ liter	Surface area /m2
1.				
2.				
3.				
4.				
5.				

Blood rate = weight(W) x 0.07

Surface area = 0.202 x W^{0.425} x H^{0.725}

student	Height (cm)	Upper limb length (cm)	Arm span



Measurement of height



Measurement of upper limb

Height (cm) × 0.4 = expected upper limb length

