



College of Veterinary Medicine

Department of Anatomy



Histology laboratory

Endocrine system

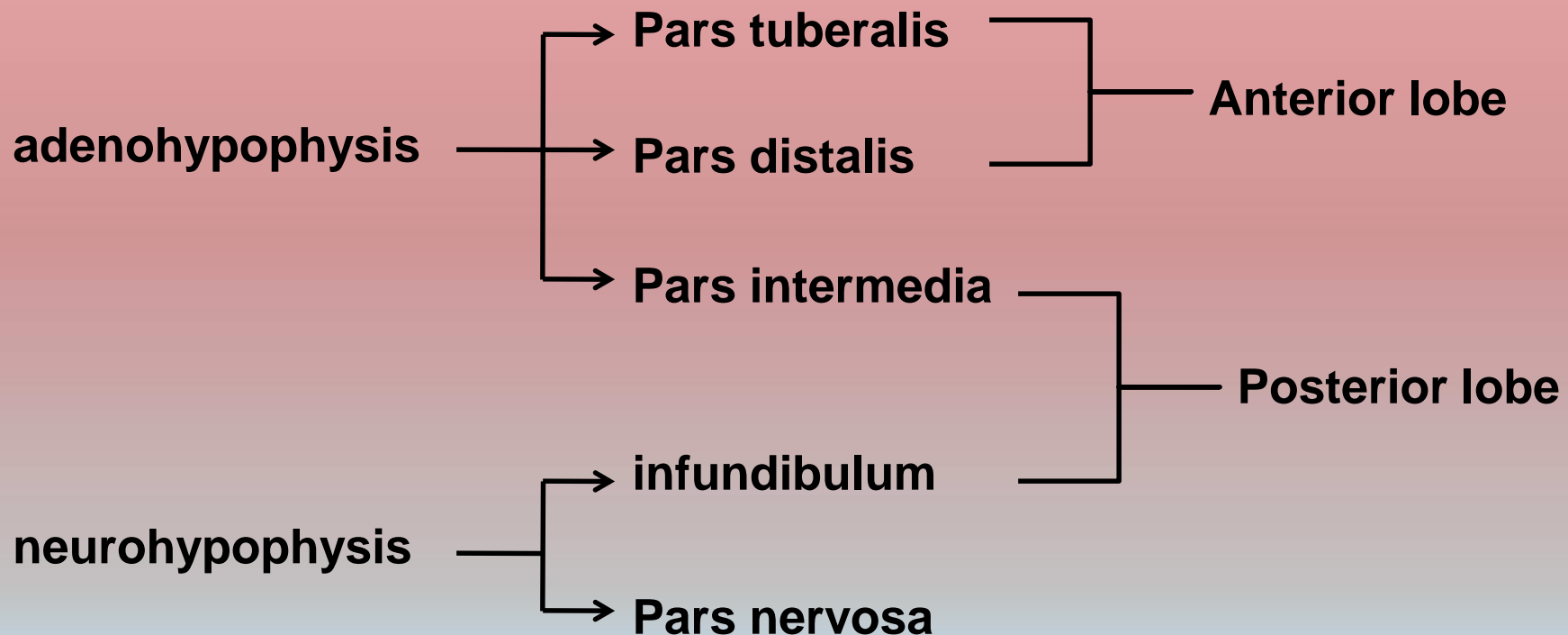


College of Veterinary Medicine

Department of Anatomy

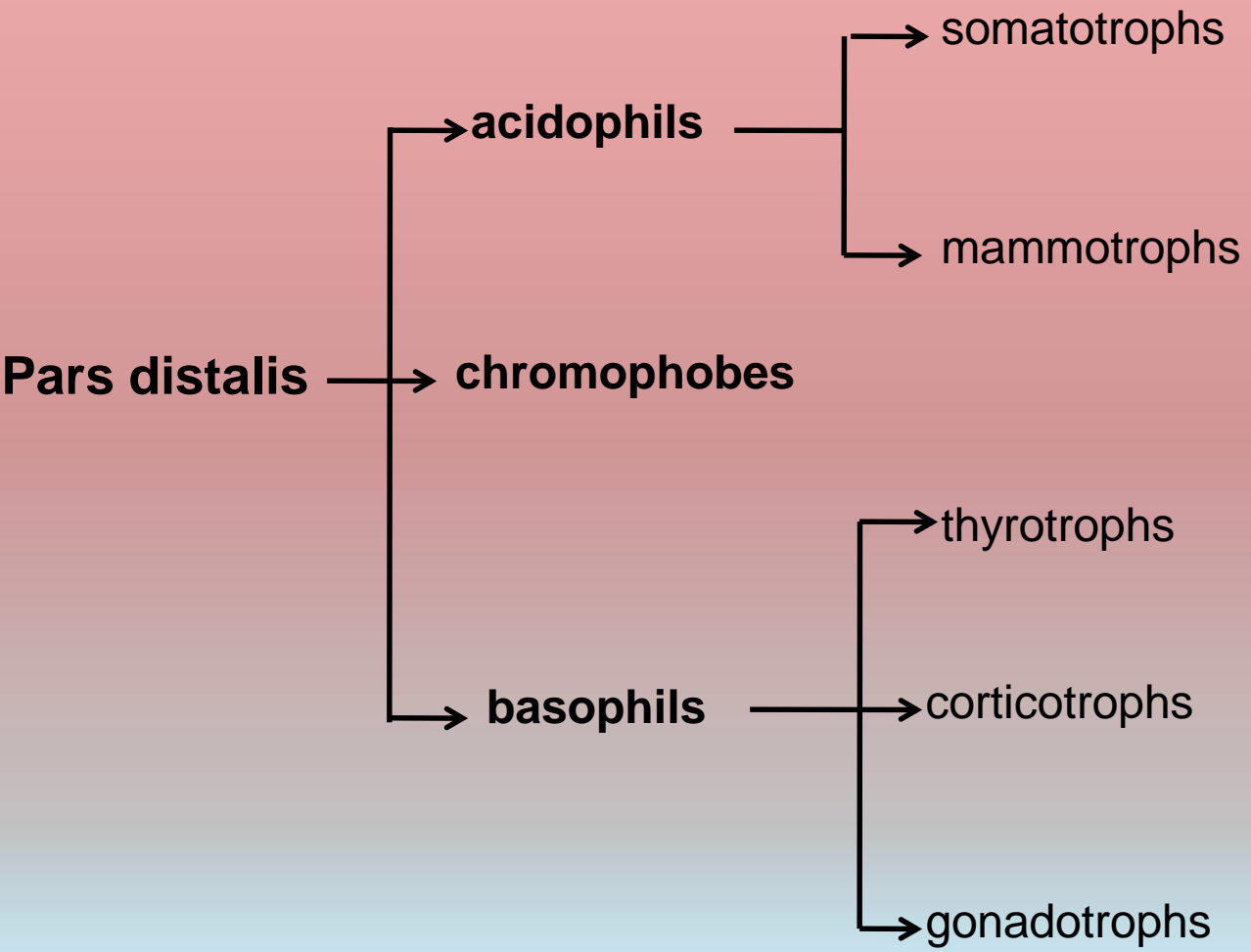


Pituitary gland (hypophysis cerebri)





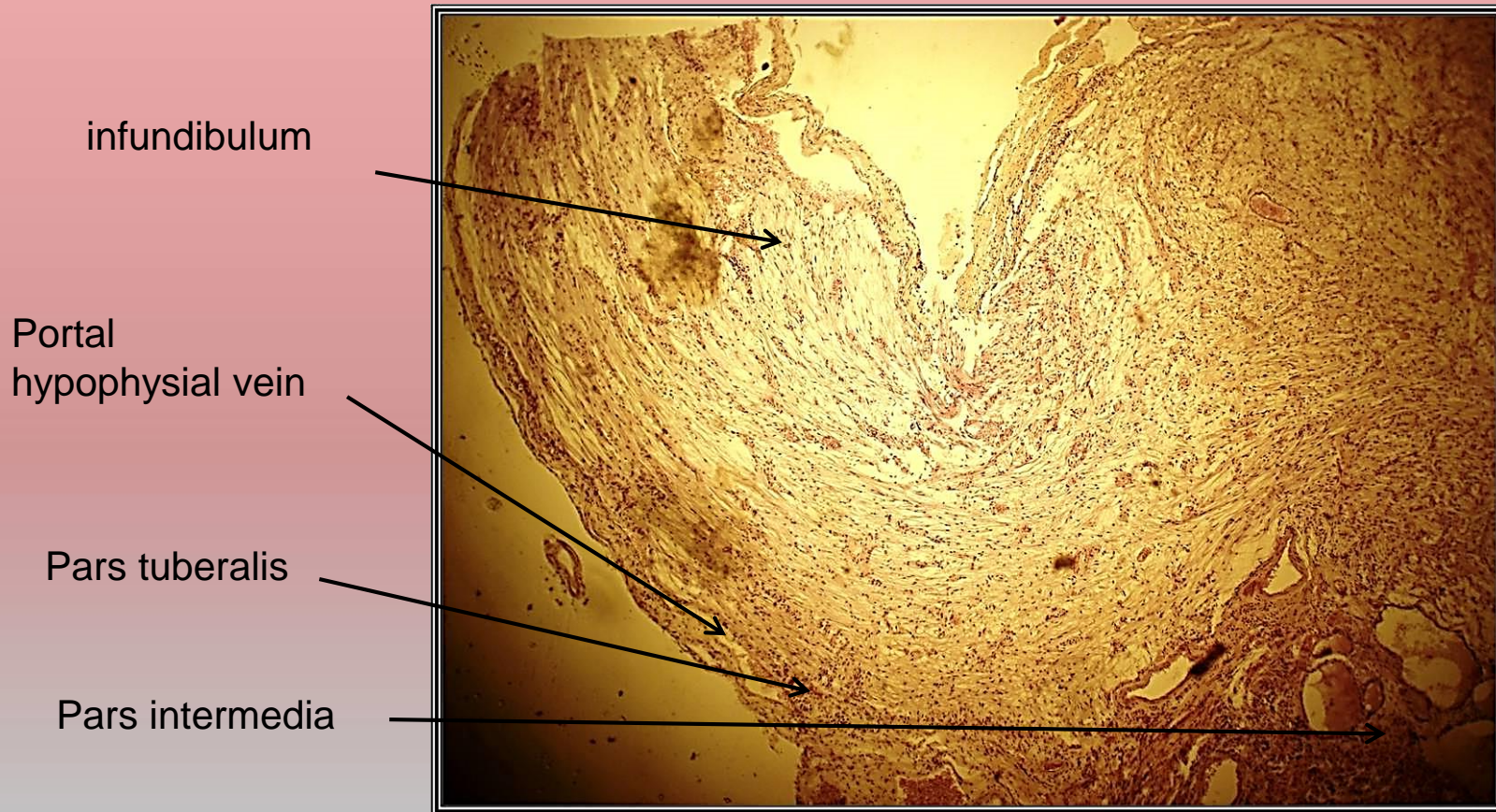
College of Veterinary Medicine Department of Anatomy





College of Veterinary Medicine

Department of Anatomy



Pituitary gland, Hematoxylin and eosin (lens 4)



College of Veterinary Medicine

Department of Anatomy

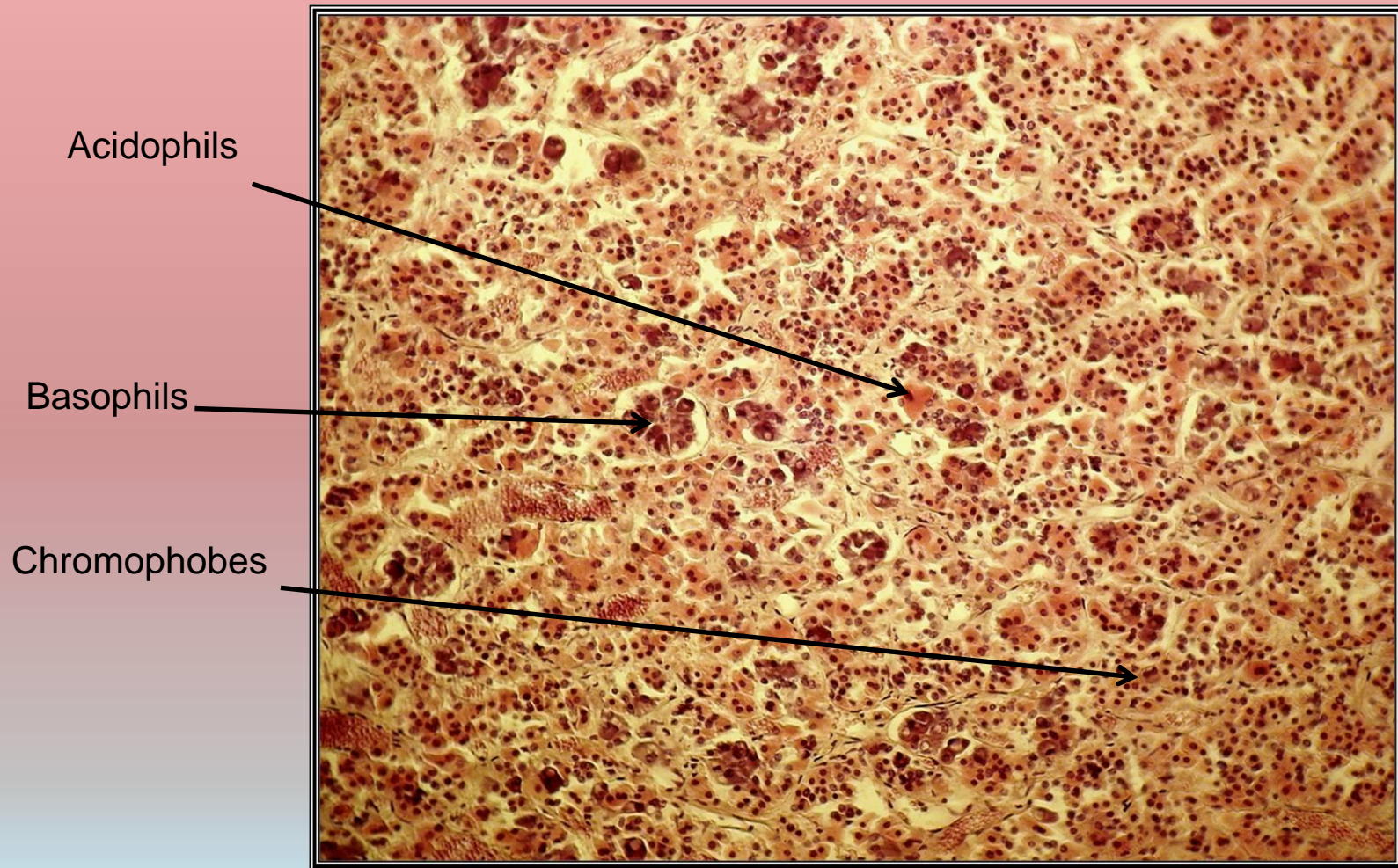


Pituitary gland, pars intermedia Hematoxylin and eosin (lens 4)



College of Veterinary Medicine

Department of Anatomy

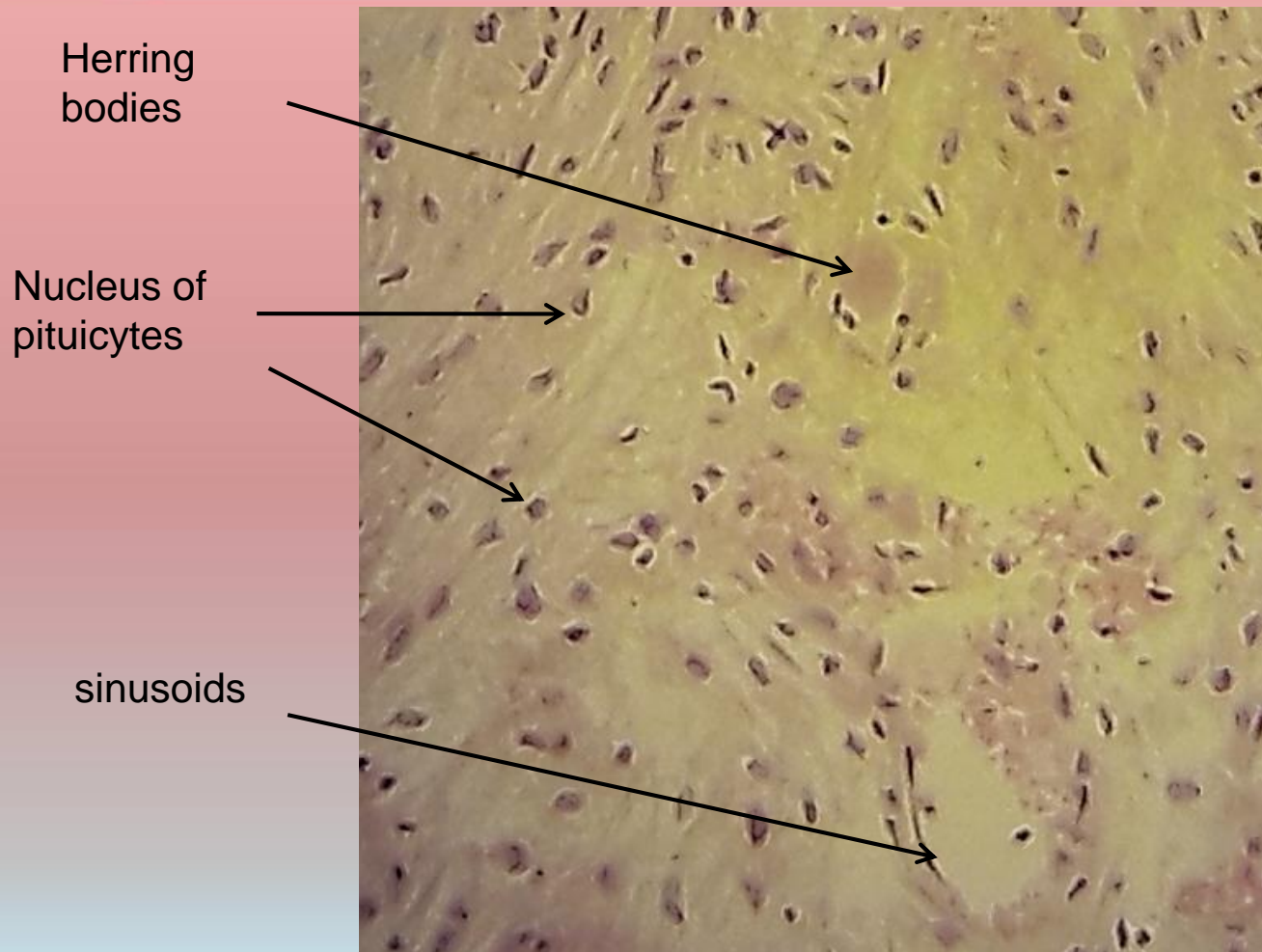


Pituitary gland, pars distalis, Hematoxylin and eosin (lens 4)



College of Veterinary Medicine

Department of Anatomy



Pituitary gland, pars nervosa, Hematoxylin and eosin (lens 10)



College of Veterinary Medicine

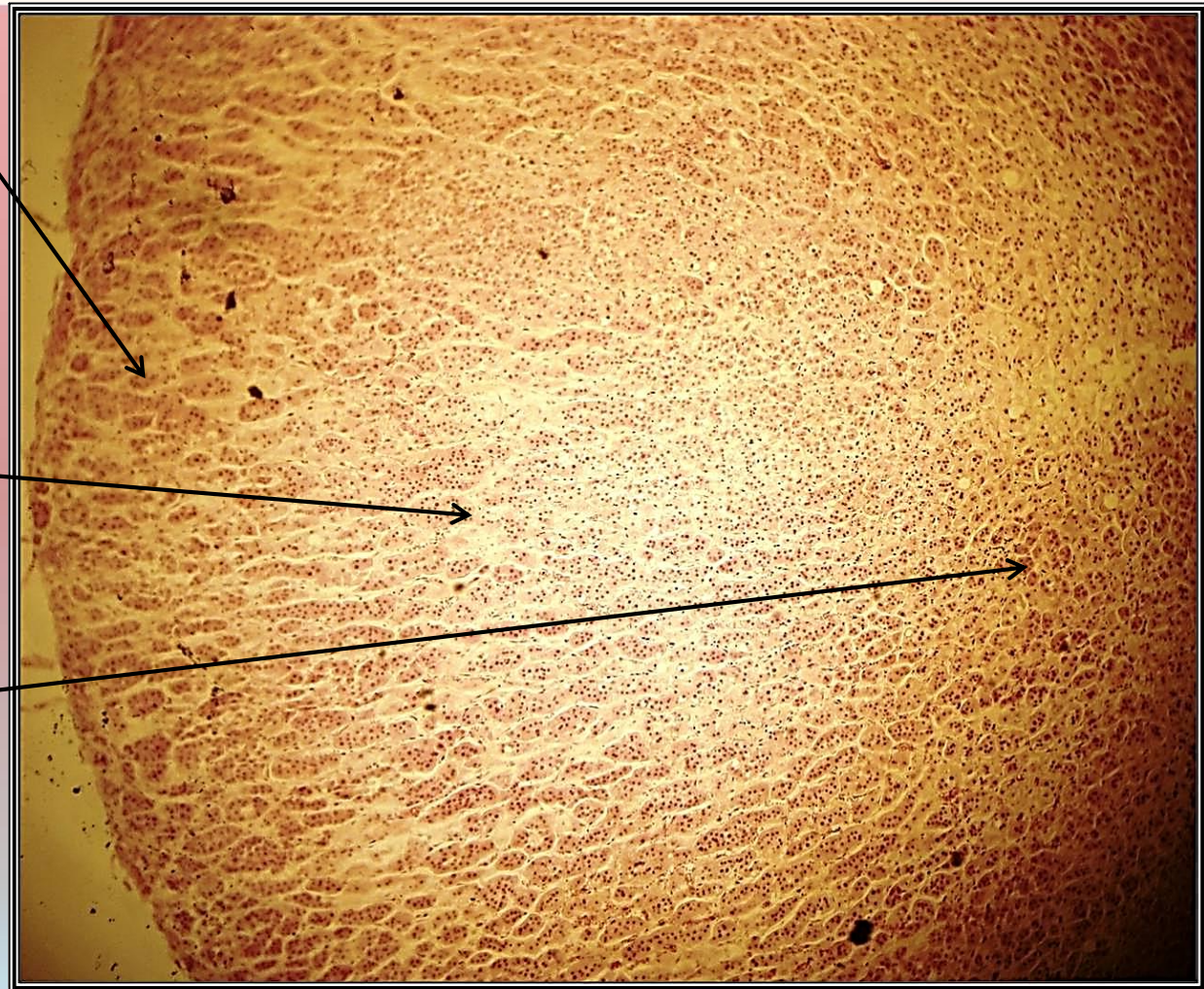
Department of Anatomy



Zona
glomerulosa

Zona
fasciculata

Zona
reticularis



Adrenal gland, Hematoxylin and eosin (lens 4)



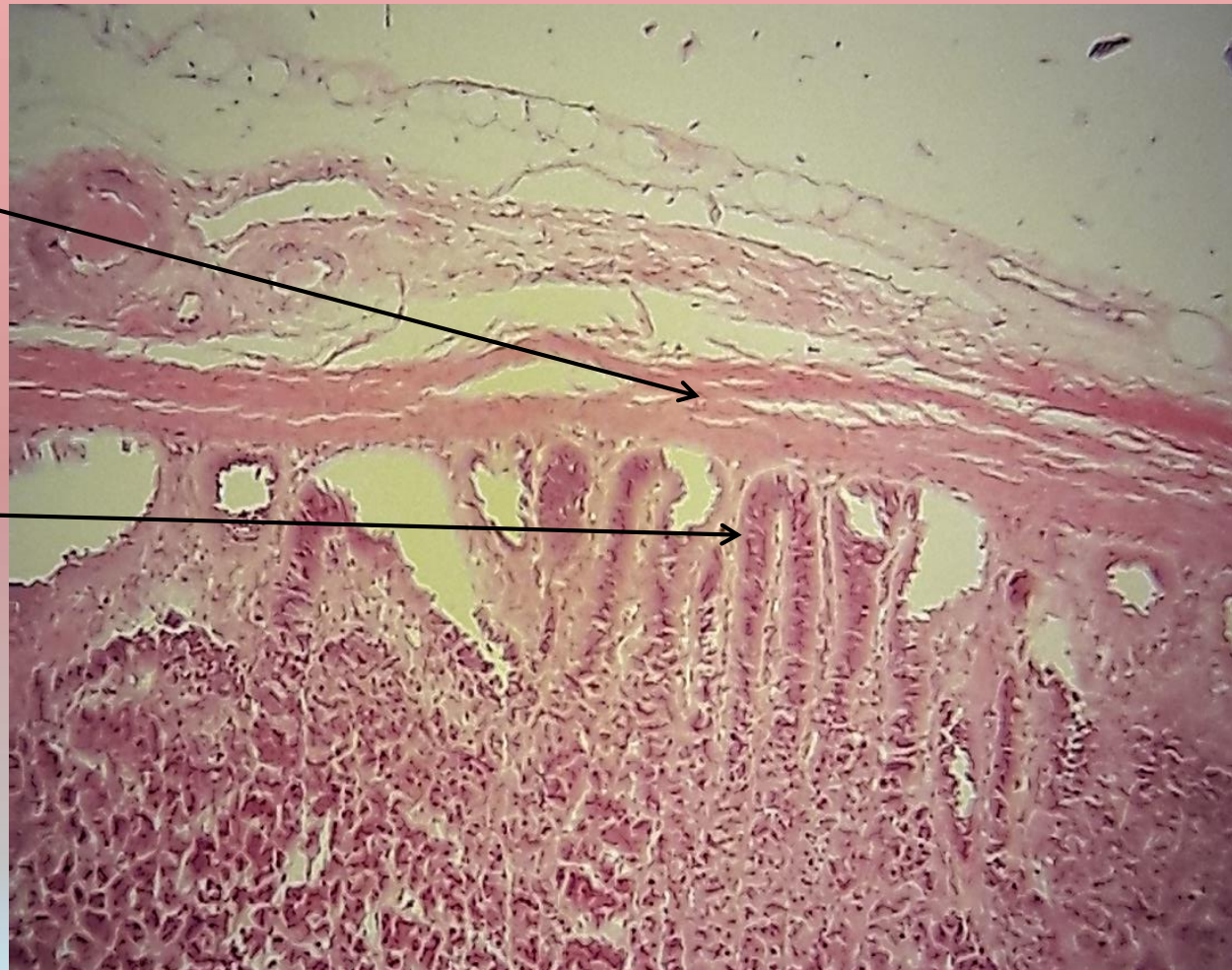
College of Veterinary Medicine

Department of Anatomy



capsule

Zona
arcuata

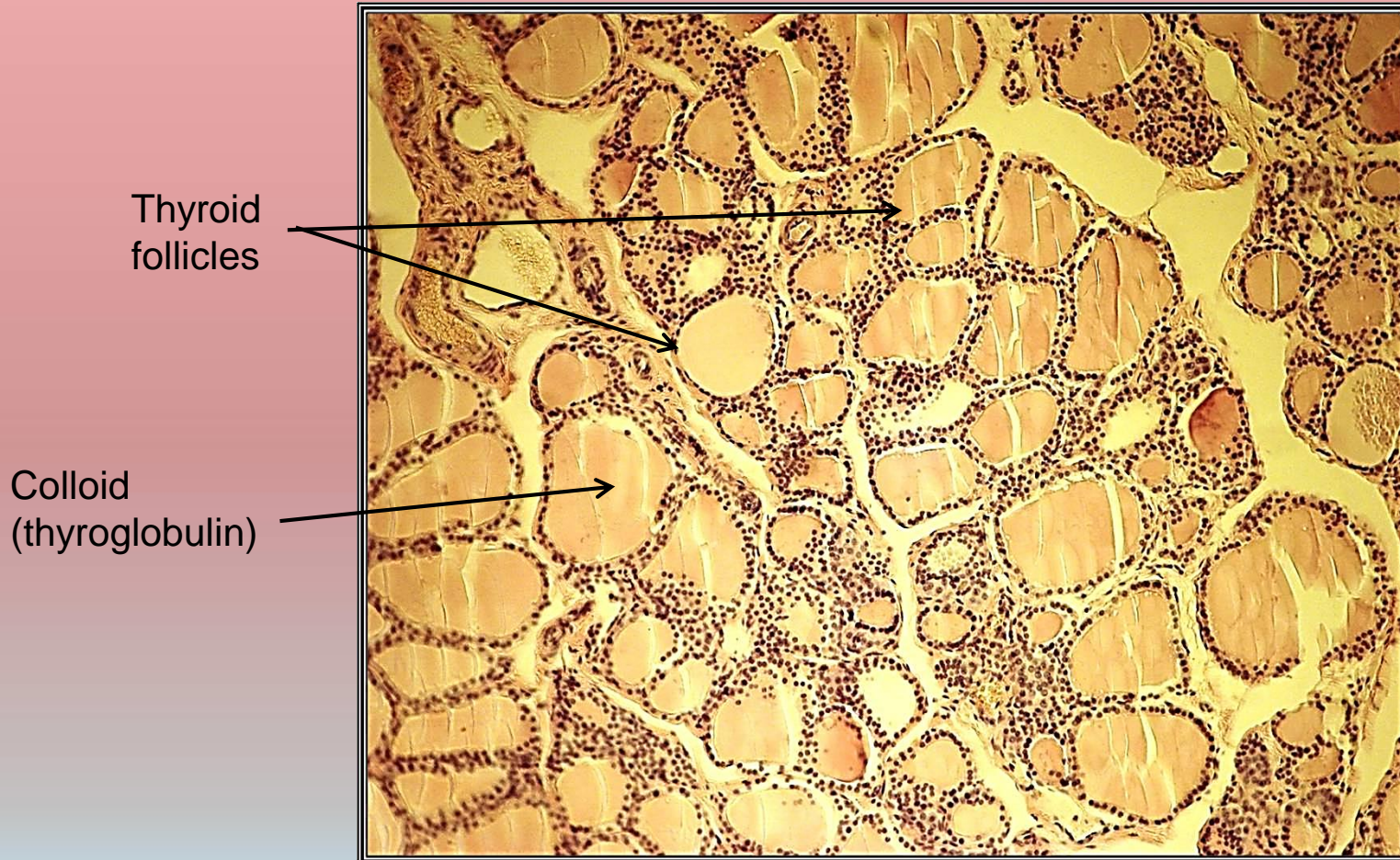


Adrenal gland of Horse, Hematoxylin and eosin (lens 10)



College of Veterinary Medicine

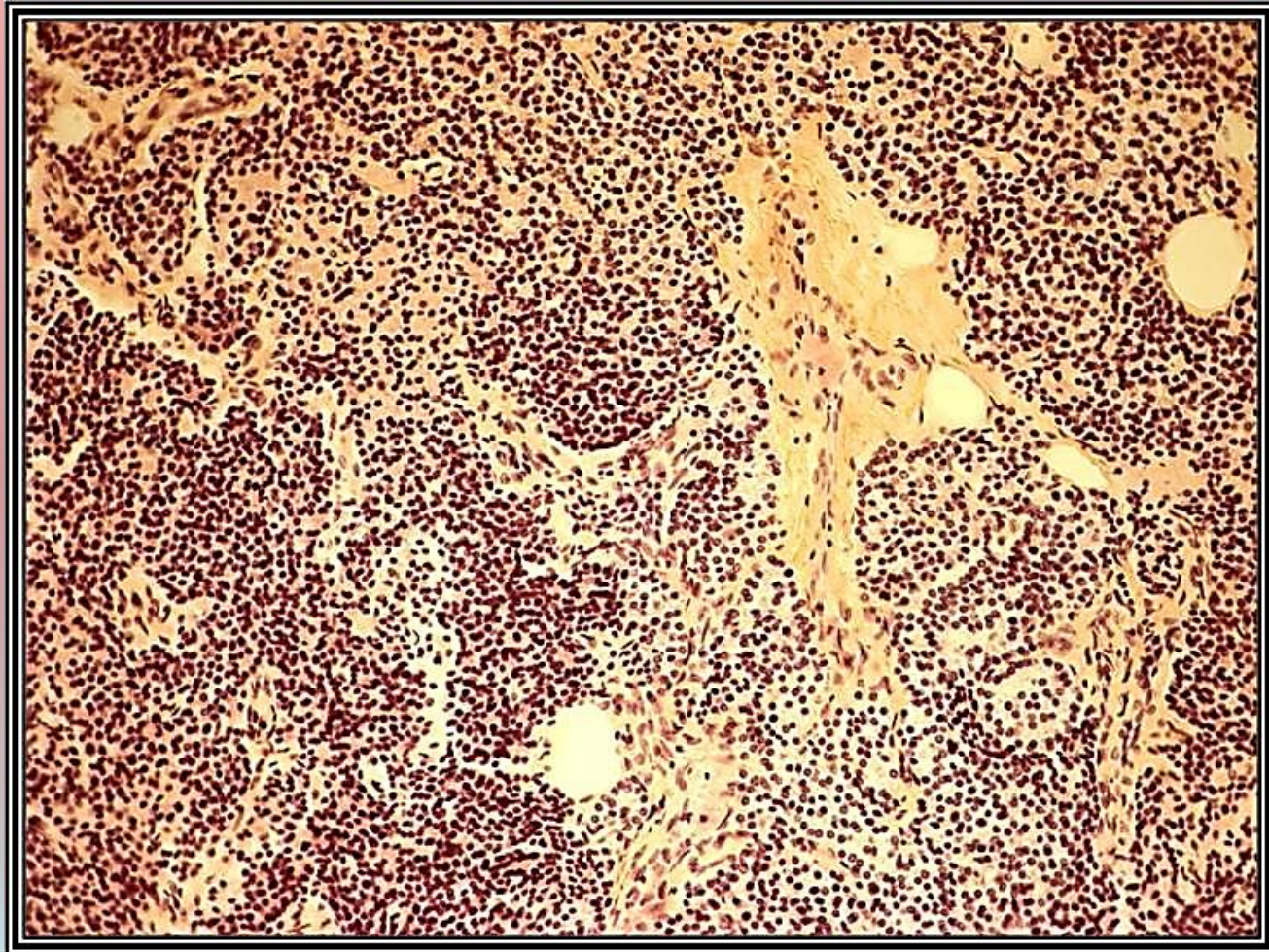
Department of Anatomy



Thyroid gland, Hematoxylin and eosin (lens 10)



College of Veterinary Medicine Department of Anatomy



parathyroid gland, Hematoxylin and eosin (lens 10)