

MULTI PURPOSE HALL- SPORT HALL

Architecture Design4 Staff -Hawnaz Magid

28/1/2024



MULTI-PURPOSE HALL- GENERALLY

- A **multi-purpose hall** is a large indoor space that can be used for a variety of events and activities such as **concerts, exhibitions, sports (basketball, volleyball, handball, yoga),** and **conferences.**
- These halls are designed to be **flexible and adaptable** to accommodate different types of events.
- They are often equipped with advanced **lighting** and **sound systems,** as well as other amenities such as **dressing rooms, restrooms, and catering facilities.**



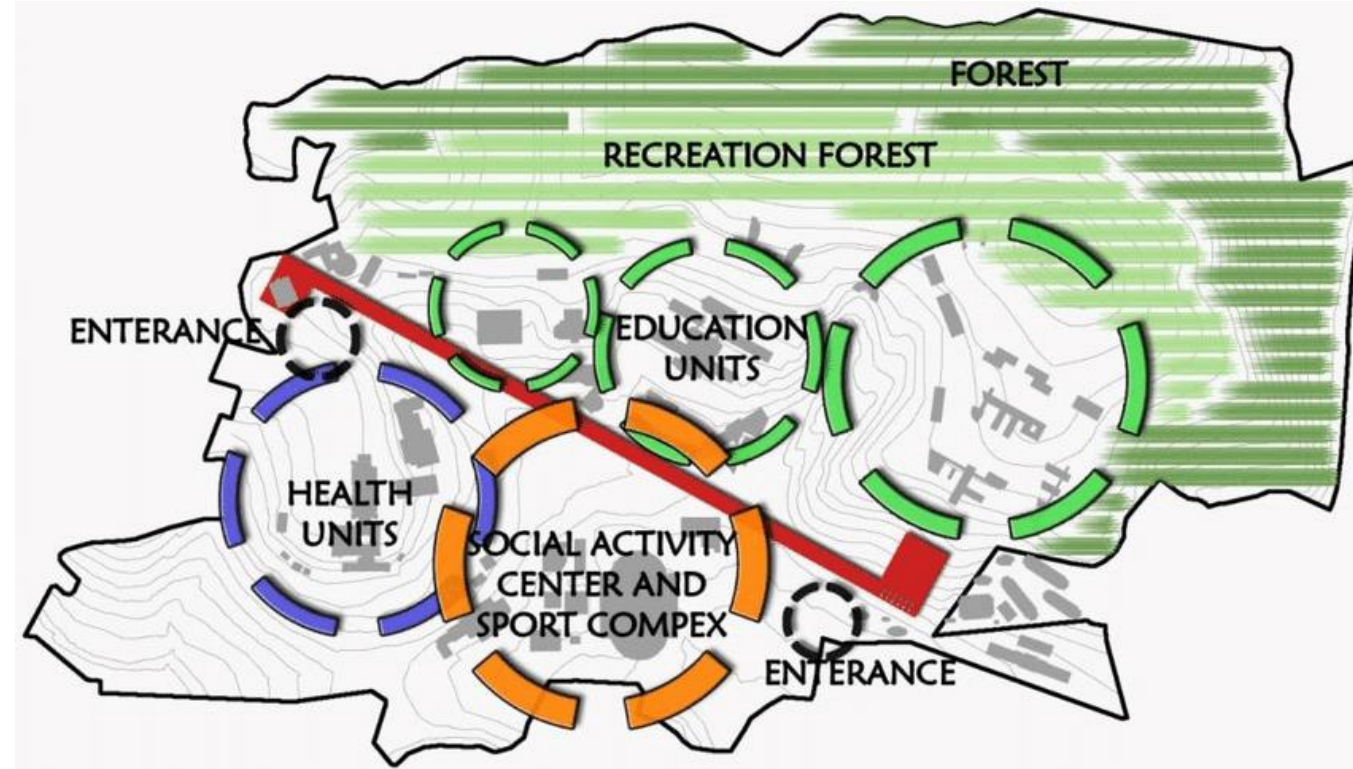
MULTI-PURPOSE HALL

- All schools should have a **Multi-Purpose Hall**. The main uses are for assembly, **Physical Education**, **performing arts activities/presentations** involving large school groups
- Preferably **the hall should be isolated from the classrooms** and related spaces for reasons of sound transmission and the potential use by external groups.



HALL ZONING

- The hall should be positioned in such a way that it is easily accessible from the main entrance and pupil changing facilities, with pupil, disabled and adult toilet provision nearby. There should be no circulation routes through the hall. The hall could be designed in conjunction with an outside courtyard area so that both areas could be used as teaching spaces in periods of good weather. Location of the Hall should allow for after hours' use (which may include the local community) without having to open the main part of the school to gain access.



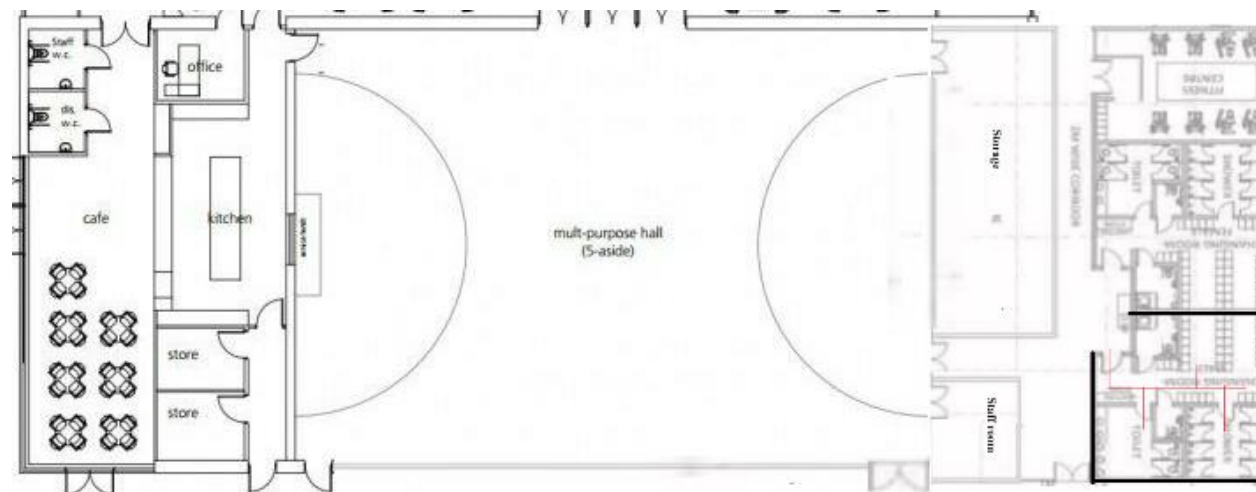
MULTI-PURPOSE HALL

| No. | Name of Space | No. | Net Area (m ²) | Required Area (m ²) |
|--------------------------|--|-----|----------------------------|---------------------------------|
| Multipurpose hall | | | | |
| 1 | Main hall (seating area) | 1 | 180m ² (10*18m) | 180 |
| 2 | Changing Room + Shower + Toilet (boy) | 1 | 24 | 24 |
| 3 | Changing Room + Shower + Toilet (girl) | 1 | 24 | 24 |
| 4 | Storage | 1 | 30 | 30 |
| 5 | Staff Room | 1 | 24 | 24 |

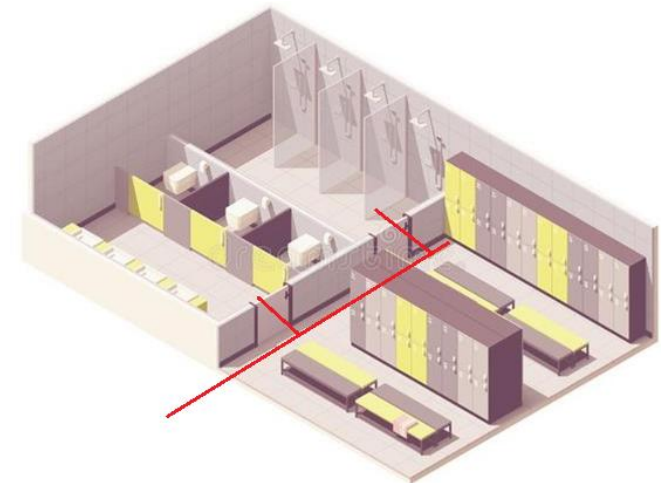
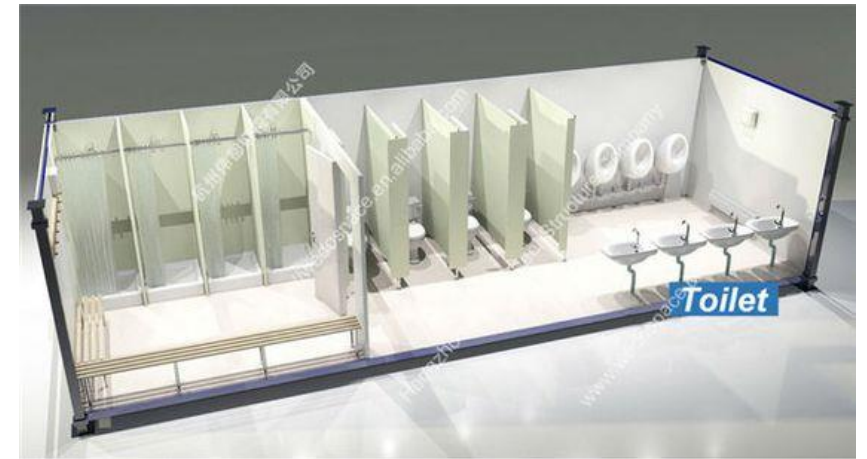
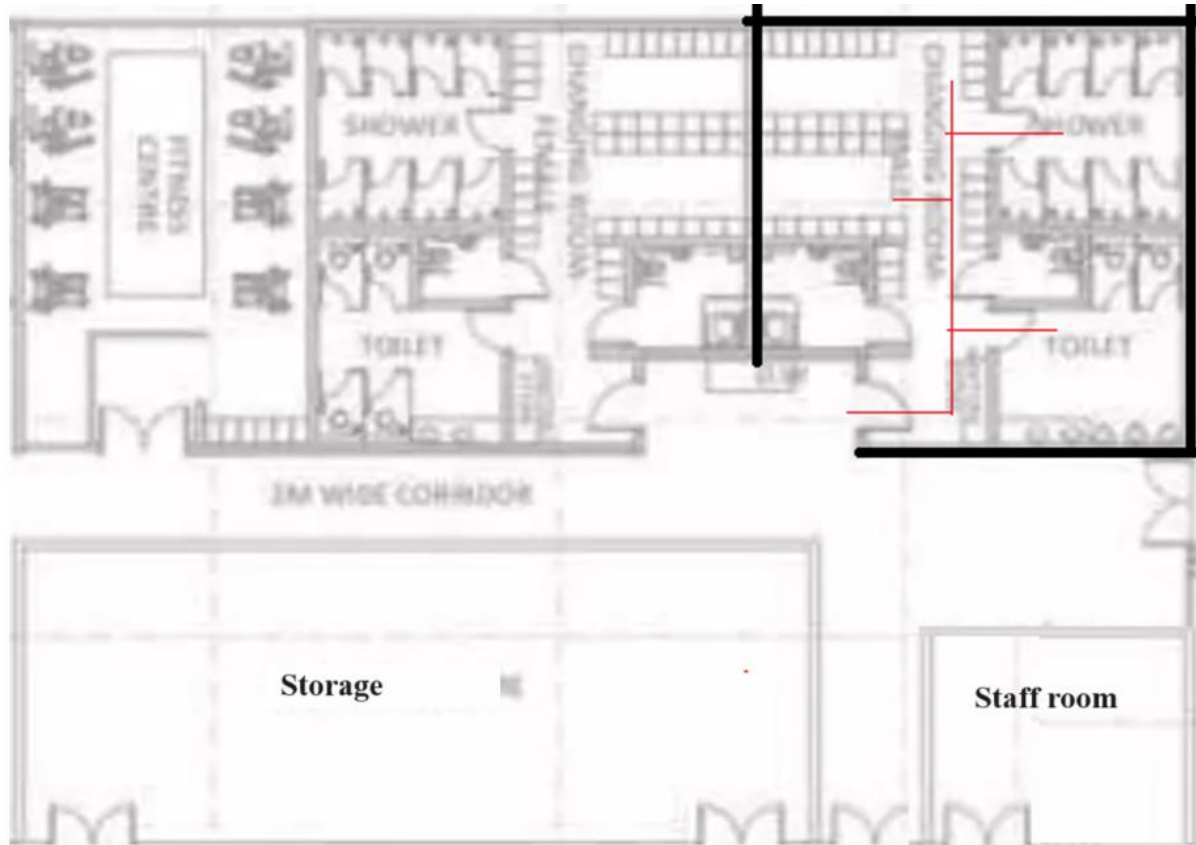
THE GUIDELINE INCLUDES ESSENTIAL REQUIREMENTS,

- The guideline includes essential requirements:
- layout options based on the geometry of the plot,
- minimum internal dimensions for sports halls,
- flooring specification,
- locker room guidelines,
- sports lighting guidelines,
- ventilation and air conditioning guidelines,
- and safety guidelines.

- The **hall should be rectangular in shape** where shared Multi-Purpose Hall/Dining is provided (to which a Kitchen/ Server is attached) provision should where possible be made for adapting this area to dining only and providing a separate Multi-Purpose Hall should the school be enlarged to such a size to warrant this. A small alcove shall be provided for storage of a piano (if required by the school). It is advantageous if one end wall is sufficiently clear of doorways, heating and electrical equipment, etc to facilitate placement of portable staging, and of a suitable material for the bouncing of balls. For Health and Safety reasons external corners, sharp angles and projections shall be avoided or shall be appropriately treated. Radiators where provided at low level shall be located within wall recesses.



MULTI PURPOSE HALL CHANGING, SHOWER AND TOILETS DESIGN



FLOORING



Wood flooring



VITRIFIED TILES

Grafite flooring



SYNTHETIC POLYURETHANE FLOORING



LOCKER ROOM GUIDELINES,

Size

height of school lockers for different age groups.

- Key Stage 1 Lockers at 1200mm
- Key Stage 2 and above Lockers 1600mm

Locker Material

- Wood Lockers
- Plastic Lockers
- Metal Lockers



WHAT ARE THE FEATURES OF A MULTI-USE SPACE?

- **SEATING**

- Flexible seating, bench seating or individual seats.



- **STAGING**

- Portable staging is lightweight and can fold up and store away easily in a storeroom



- **STAFF ROOM**
- **CAFE /KITCHEN**
- Social areas can be created simply for teas and coffees or for commercial cooking.



CAN OUR MULTI-USE HALL MAKE USE OF ENERGY EFFICIENCIES AND BE BUILT WITH NET ZERO IN MIND?



INSULATION

Insulation and airtightness via the walls and floors of a building, reduces the requirement to heat the building, essentially reducing carbon emissions.



VENTILATION & HEAT RECOVERY

Extracting moist and stale air from a wet room and recovering any heat in that air, will reduce your consumption of hot water, energy bills and reduce carbon.



RENEWABLES & SMART HEATING

Using renewables for heating the sports hall itself as opposed to reliance on gas ensures a positive contribution to your carbon footprint and the intelligent control systems mean energy consumption is minimised.



ENERGY EFFICIENT LIGHTING

Low energy LED lighting reduces energy use, whilst movement sensors and intelligent control systems ensure lights are only in use when needed.

CAN OUR MULTI-USE HALL MAKE USE OF ENERGY EFFICIENCIES AND BE BUILT WITH NET ZERO IN MIND?



WATER HEATING

Water heating via air source heat pumps ensures energy efficient water heating. This is particularly effective when combined with underfloor heating, which can run at a lower temperature than traditional radiators.



INTEGRATED, PV PANELS

The large expanse of roof allows a significant area of PV panels on a sports hall, using the latest and best semiconductor technology to convert energy from the sunlight to electricity to power the building and feedback into the grid.



MONITORING

Tracking energy consumption can help to reduce and eventually eliminate energy waste. Smart building management systems, provide real-time data and allow the efficient operation of the building.



LANDSCAPING

By helping you to design the landscape around your sports hall site so that carbon dioxide capturing plants and trees are incorporated we are providing a further contribution to the environment.