



Q1/choose the correct answer(40 marks)

- _____ composed of two or more organs which function together to perform a common task.
 - a) The tissue.
 - b) The organ.
 - c) The organ system.

- Transitional epithelial tissue called by this name because cells of the superficial layer are vary between
 - a) stratified squamous and stratified columnar type.
 - b) stratified squamous and pseudostratified type.
 - c) stratified squamous and stratified cuboidal type.
 - d) stratified cuboidal and stratified columnar type.

- _____ consists of two centrioles located near the nucleus, it plays a role in cell division.
 - a) lysosome.
 - b) nucleus.
 - c) centrosome.
 - d) ribosome.

- Some microscopic organisms, such as bacteria and protozoa, are unicellular, meaning_____
 - a) They are composed of a great many cells.
 - b) They consist of a single layer of cells.
 - c) They consist of a single cell.
 - d) They consist of more than one layer of cells.

- The cell consists of a mass of protoplasm surrounded by _____
 - a) The cytoplasm
 - b) The plasma membrane.
 - c) The nucleus.

- _____, play an important role in storage and synthesis of secretory granules.
 - a) Lysosome.
 - b) Endoplasmic reticulum.
 - c) Golgi complex.
 - d) Mitochondria.

- _____ Composed of more than one type of cells, with the cell nuclei laying on different level.
 - a) Simple squamous epithelial tissue.
 - b) Simple cuboidal epithelial tissue.
 - c) Simple columnar epithelial tissue.
 - d) pseudostratified epithelial tissue.

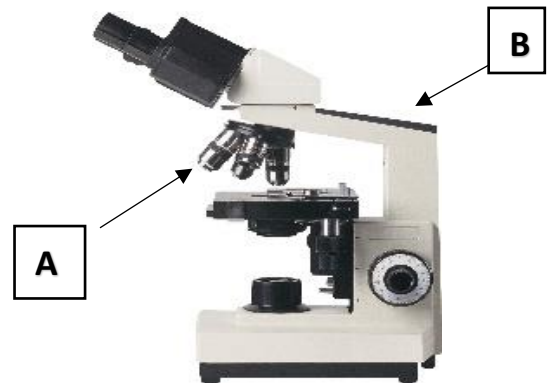
- _____ these are the specialized parts of the cell such as (endoplasmic reticulum, golgi complex... etc)
 - a) Organelles
 - b) Inclusions
 - c) Nucleus
 - d) Centrosome

- A stratified epithelium has multiple layers of cells.
 - a) True.
 - b) False.

- _____ It is composed of cells appears as box-like the nuclei are spherical and have central position
 - a) Simple squamous epithelial tissue.
 - b) Simple cuboidal epithelial tissue.
 - c) Simple columnar epithelial tissue.
 - d) pseudostratified epithelial tissue.

- keratinize Stratified squamous epithelium: such as in Human skin.
 - a) True.
 - b) False.
- The total magnification of the objective lens 40X and The eyepiece 10X is:
 - a) 400X
 - b) 100X
 - c) 40X
 - d) 10X
- Stratified squamous epithelial tissue consist of two layers of squamous cells.
 - a) True.
 - b) False.
- _____ tissue covers external surfaces and internal cavities and organs:
 - a) Epithelial Tissues
 - b) Connective Tissues
 - c) Muscular Tissues
 - d) Nervous Tissues
- In urinary bladder the type of tissue is:
 - a) stratified columnar epithelial tissue.
 - b) Stratified cuboidal epithelial tissue.
 - c) Transitional epithelial tissue.
 - d) Pseudostratified epithelial tissue.
- Which one of the following parts of a microscope is Optical part?
 - a) Nosepiece
 - b) The eyepiece
 - c) The stage
 - d) The arm
- High dry objective lens has a magnification power of _____
 - a) 4X
 - b) 40X
 - c) 10X
 - d) 100X

- _____ the most essential organelles in cells, they play an important role in protein synthesis, it may be located on endoplasmic reticulum, or are free in cytoplasm.
 - a) The centrosome.
 - b) The Nucleus.
 - c) The mitochondria.
 - d) The ribosomes.
- The diagram below shows a microscope. What are the parts labelled A and B?
 - a) The eyepiece and the objective lens.
 - b) The objective lens and the base.
 - c) The objective lens and the arm.
 - d) The eyepiece and the arm.



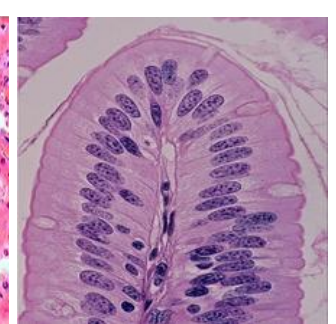
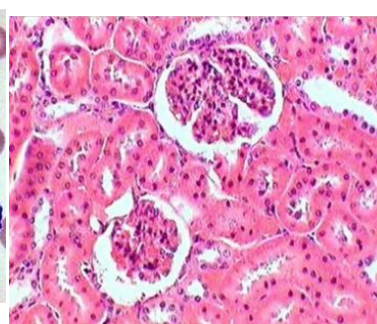
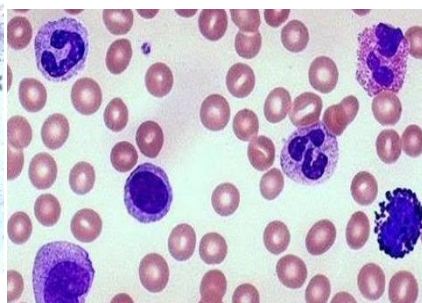
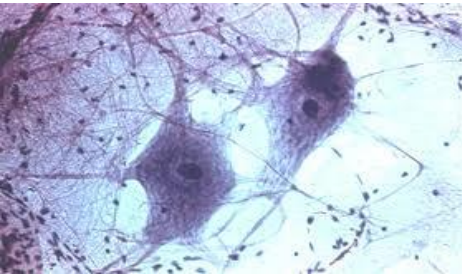
- The diagram below shows a microscope. What is the part labelled X ?
 - a) The light source
 - b) The stage.
 - c) The arm.
 - d) The objective lens.



Q 2 / write the type of tissue in the following slides

(20 marks)

1. Blood smear showing red blood cells and white blood cells.
2. Sparm cells.
3. Nerve cells.
4. Ovum (Egg cells).
5. Simple squamous epithelial tissue.
6. Simple cuboidal epithelial tissue.
7. Ciliated simple columnar epithelial tissue.
8. Non-ciliated simple columnar epithelial tissue.
9. Ciliated pseudostratified epithelial tissue.
10. Non - Ciliated pseudostratified epithelial tissue.
11. Keratinize stratified squamous epithelial tissue.
12. Non- Keratinize stratified squamous epithelial tissue.
13. Stratified cuboidal epithelial tissue.
14. Stratified columnar epithelial tissue.
15. Transitional epithelial tissue.

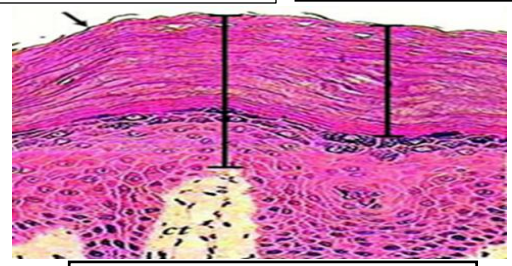
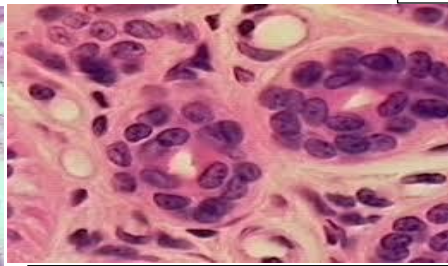
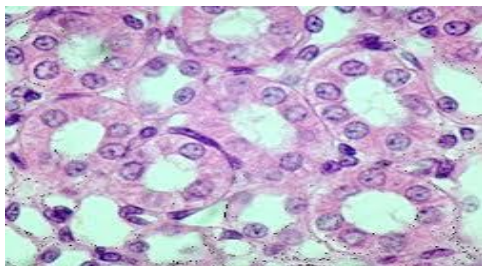


[]

[]

[]

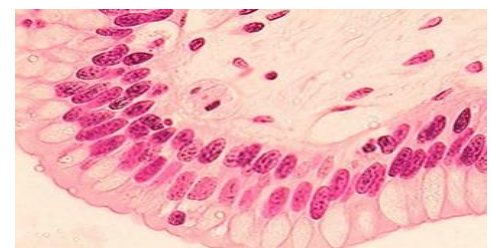
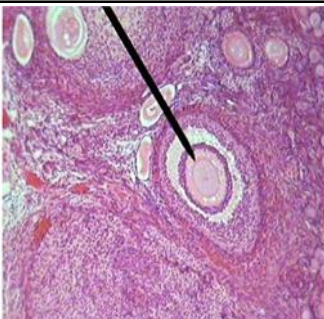
[]



[]

[]

[]



[]

[]

[]

