

Q.1/ put True (T) or False (F), on the following sentences and correct the wrong:

- 1- The Skin in order Artiodactyla is the soft covered by hairs, nails, claws, horns and hooves, reduced in whales.
- 2- In order cetacea are very large aquatic birds, the body usually oval-shaped and penguin like.
- 3- Eyes of geckos are very large and lack movable eyelids, but eyes of porpoises are small.
- 4- Order Lagomorpha hind legs modified for swimming, but in order Psittaciformes hind legs modification for fly.
- 5- Order Proboscidae upper incisors are large as tusks.

Q.2/ choose the correct answer:

- 1- porcupines as example in order cetacean(Sphenodon – Galliformes- Squamata)
- 2- dugongs as example in order Squamata, and manatees as example in order (Strigiformes- Proboscidae- Lagomorpha)
- 3- dolphin example in subclass carry unborn young in the uterus until well developed offspring after a longer gestation period. (monotremes-euthera-kangaroo)
- 9- The eyes of dogfish located to dorsal on the head with Upper and lower eyelids protect the eye movable lower and immovable upper lids, the body of bony fish is circular shape, spindle-like, and lack spiracle.(skate-rays-dogfish)
- 10- Order Anseriformes, the type of beak is spoon flat and narrow beak which has small holes on both sides, example(loons-passiform-pelican).

Q.3/fill the following blanks.

- 1-Life cycle of turtle is _____ Metamorphosis and _____ larval phase.
- 2- Respiration in order Rhynchocephalia by _____, and order Proboscidae by _____
- 3- The turtles the body enclosed in a bony case of _____ is divided into two sections a ventral side _____ and a dorsal side _____.
- 4- Kangaroo grow to maturity inside the _____ called _____.
- 5- Platypus lays _____ like reptiles, eggs fertilized then shell is put around them and they are buried; after hatching mother feeds them with milk and _____ nipples.

Q.4/A-write the number of chamber of heart (A-two/B-three/C-four)

- 1-human.....2-porcupines.....3-penguins.....4-larks.....5-Sphenodon.....

Q.5/B-write the type of fertilization (A-external/B-internal/C-self-fertilization)

- 1-order anura2-order artiodactyls.....3-order chelonia.....
- 4-order Anseriformes5- order primate

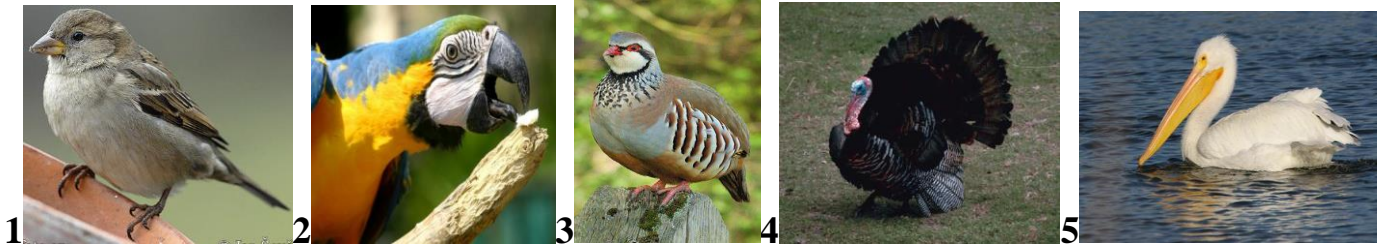
Q.6/C- write the types of beak and feet of the following:

	Larks	Swallows	eagle	Swan	ostrich
feet					
	pelican	Swan	Storks	Loons	vulture
beak					

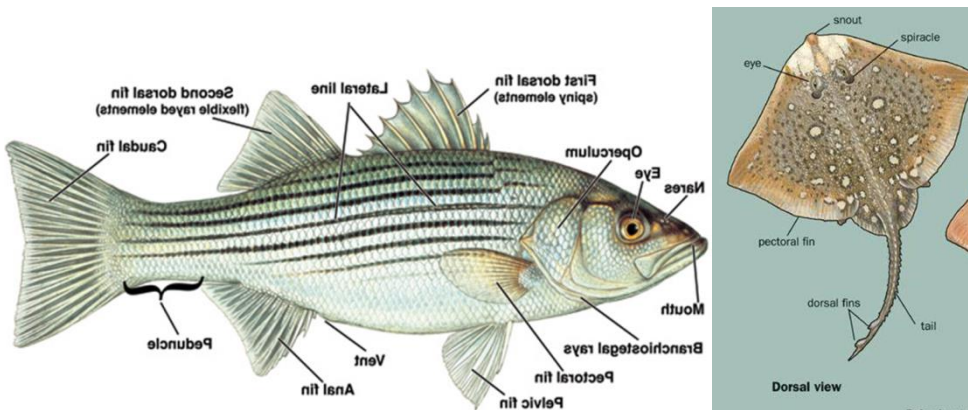
Q.7/A- Write the name of order:

EXAMPLE	ORDER	EXAMPLE			
moles		Swan			
hedgehogs		tapirs			
Snake		salamander			
horses,		skate			
Larks		apes,			

Q.8/B-Write the name of order



Q.9/ Compare between the following write the detail location :



Q.10/ write the types of gills ?

Q.11/ write the types dorsal fine?

Q.12/ the types of gills scale ?

Q.13/define the following: papillae-metaplural folds-homology-analogy

Q.14/ general charcters of cyclostmata?

Q.15/ general charcters of vertebrate?

Q.16/ general charcters of hagfish?

Q.17/ general charcters of vertebrate?

Q.18/ comopare between anura and urodela.

Q.19/C ompare between egg of reptile and amphibian.

Q.20/C ompare between birds and mammals.

Q.21/C ompare between ostrich and penguin.

Q.22/C ompare between lagomorpha and serbenta.

Q.23/compare between two sample



Q.24/compare between two sample



Q.25/ compare between two sample

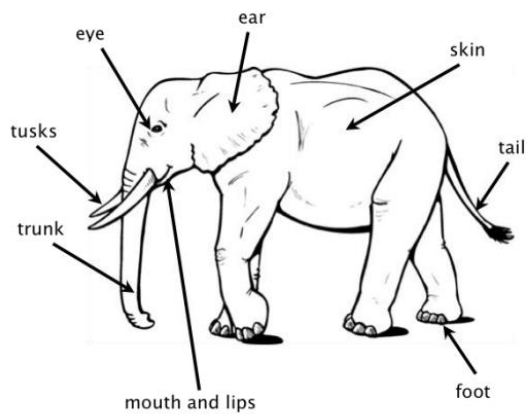


Q.26/ compare between two sample



Q.27/LABEL PARTS:

Forest Elephant Anatomy



Q.28/Write the Types of vertebrae according to centrum (body)?

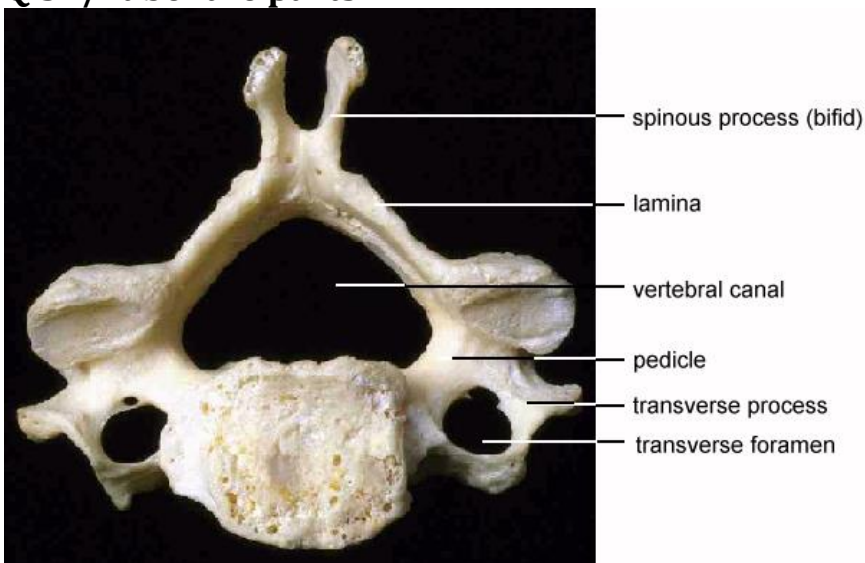
Q.29/Write the name of body?



Hewa Moha

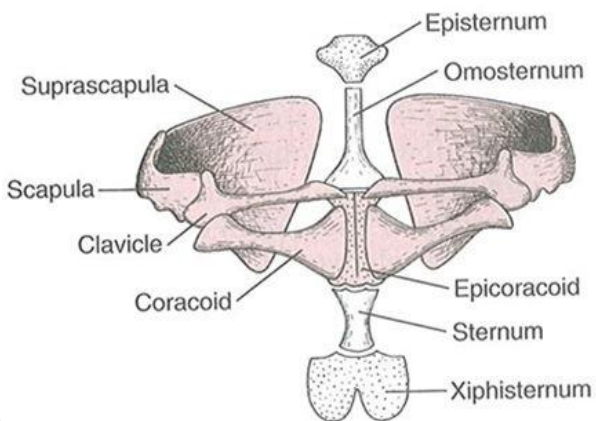
Q.30/ Parts of vertebra?

Q.31/Label the parts:



Q.32/ Write the Differentiation vertebral column Teleoste?

Q.33/ write the label parts?



m

Q.34/ Compare between order following:



Q.35/ Determination the male of female ?why?



Q.36/DIFFERENCE BETWEEN SUBORDER LACERTILIA AND OPHIDIA?

Q.37/Write the general characters of birds?

Q.38/Write the general characters of mammals?

Q.39/Write the general characters of amphibian?

Q.40/Write the general characters of reptiles?