

English for International Tourism

Water cities



**Lecturer: Hussein Ahmad
Mustafa**

**Tourism Organizations Administration
The College of Administration and
Economics**

Where to Stay



Van Onna

Bloemgracht 102 / 104 / 108, 1015 TN.

Rooms: 39    

Loek van Onna's charismatic B&B was originally three canal-side houses. The middle house was recently modernised and now contains an attractive staircase and breakfast room, and neat, modern rooms with en suite bathrooms. The two buildings on either side offer much more basic accommodation with shared bathrooms.

Swissôtel Amsterdam

Damrak, 96-98, 1012 LP. Rooms: 109 

  24        

This smart hotel on the corner of Dam square is popular with business people who are looking for something more intimate than a large chain hotel. Breakfast, lunch and dinner are served in an attractive marbled, but informal, French brasserie. Marble also features in the bathrooms of the hotel's stylish, modern and well-equipped bedrooms. Rooms facing the square are more expensive. But it is better to ask for a quieter room at the back of the hotel.

Estheréa

Singel 305, 1012 VJ. Rooms: 75  

The Estheréa occupies four elegant seventeenth-century houses. It is within easy walking distance of Dam square and Spui. This long-established hotel is popular with groups. More than half the bedrooms have a canal view, but rooms at the rear are bigger.

Canal House

Keizersgracht 148, 1015 CX. Rooms: 26

Of all the city's small hotels, the Canal House is the most elegant. It occupies two old houses, and all the rooms have magnificent views. Downstairs there is an atmospheric bar with gold mirrors, an ornate breakfast room and a lounge with a grand piano. Antique furnishings are also found in the bedrooms. Those at the front have views of the canal, while back rooms overlook a secluded garden. To preserve the ambience there are no televisions and children are not welcome.

Vocabulary: Hotel facilities

Ex1 Match the symbols with the hotel and room facilities.

UNIT 5

Exercise 1

- 1 bath or shower
- 2 single-rate rooms available
- 3 rooms for more than two people
- 4 twenty-four hour room service
- 5 television in all rooms
- 6 minibar
- 7 non-smoking rooms
- 8 air conditioning
- 9 caters for children
- 10 lift
- 11 pets allowed
- 12 hotel parking
- 13 restaurant

bath or shower pets allowed twenty-four hour room service

television in all rooms single-rate rooms available caters for children

rooms for more than two people lift non-smoking rooms

hotel parking minibar air conditioning restaurant



Reading: Amsterdam hotels

Ex2 Read the hotel descriptions on the opposite page and choose the most suitable hotel for the following people.

Exercise 2

- 1 Canal House 2 Van Onna 3 Estheréa
4 Swissôtel Amsterdam

1 Candy Olsavsky, 45

I'd like something special for my retired parents. The hotel needs to have a lift because my mother can't walk up and down stairs very easily. Somewhere quiet with old-fashioned service would be good for them. They don't like going out at night so the hotel should have a nice, comfortable lounge.

2 Kerstin Meyer, 23

I'm an art student and I'm going to Amsterdam on my own for a few days to see the museums. I haven't got much money and I just want a clean, simple, single room. I'll be out all day visiting the city so I don't want any special hotel facilities. I don't expect to have a room with its own bathroom.

3 Jocelyn Monroe, 28

My friend Sue is getting married next month and we're having a weekend away with about ten other girls to celebrate. We want to find a hotel with big family bedrooms so three or four of us could be in the same room. Two of the women are bringing their children and Marie wants to bring her dog.

4 Bruce Phillipson, 32

I'm looking for a hotel for our director of marketing and two other members of the department. They are going to the city to meet some important new clients. The hotel must have non-smoking rooms and room service. There must be a bar and restaurant too, because they might want to entertain the clients.

Ex3 Read the text again. Which hotel(s):

Exercise 3

- 1 Swissôtel Amsterdam
- 2 Swissôtel Amsterdam, Estheréa, Canal House
- 3 Van Onna, Estheréa, Canal House
- 4 Estheréa
- 5 Van Onna, Swissôtel Amsterdam, Estheréa
- 6 Swissôtel Amsterdam, Estheréa
- 7 Swissôtel Amsterdam
- 8 Van Onna

- 1 offers dining facilities?
- 2 have a lift?
- 3 are suitable if you want a single room?
- 4 is best for guests with young children?
- 5 have rooms for three or more people?
- 6 have televisions in the bedrooms?
- 7 has the most facilities?
- 8 has the least facilities?

Language Focus:

Comparatives and superlatives

Ex4 Write the comparative and superlative forms of these adjectives.

Exercise 4

1 bigger	the biggest
2 quieter	the quietest
3 noisier	the noisiest
4 more basic	the most basic
5 more modern	the most modern
6 better	the best
7 worse	the worst
8 further / farther	the furthest / farthest

1 bigbigger.....	...the...biggest...
2 quiet
3 noisy
4 basic
5 modern
6 good
7 bad
8 far

Ex5 Complete the tour guide extract with as ... (as) , not as ... (as) or comparative or superlative form.

Exercise 5

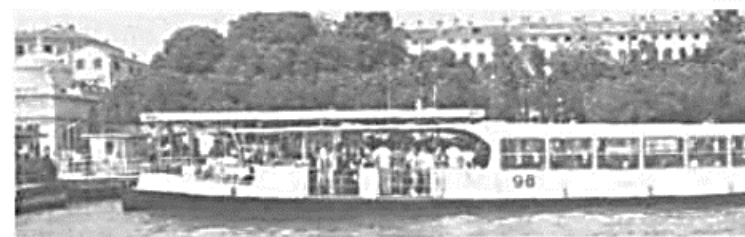
- 1 the most entertaining
- 2 best
- 3 faster
- 4 doesn't stop as often as
- 5 cheaper than
- 6 the most romantic
- 7 not as popular as
- 8 the fastest
- 9 the greatest
- 10 as compact as
- 11 not as easy

Venice at a glance

FOR VISITORS TO VENICE, the vaporetti or water-buses provide (entertaining) the most entertaining...¹ form of transport. The (good)² value service for tourists is the number 1. This operates from one end of the Grand Canal to the other and travels slowly enough to get a good view of the palaces at the waterside. The number 82 offers a (fast)³ route down the Grand Canal because it (not / stop / often)⁴ the number 1. The main waterbus services run every ten to twenty minutes but there are fewer after 6 pm. Buying a return ticket is (cheap)⁵ getting two single tickets. The price of a ticket is the same for going one stop or doing the whole route.

The gondola is (romantic)⁶ way to see the city but the prices are high, which means that it is (not / popular)⁷ other forms of transport with local Venetians.

The water taxi is (fast)⁸ way to travel through the city and out to the islands, taking only twenty minutes to go to the airport. One of (great)⁹ pleasures of exploring the city is walking. Few cities are (compact)¹⁰ Venice and it is possible to cross the city on foot in thirty-five minutes. Unfortunately, finding somewhere to sit and rest is (not easy)¹¹.



Language focus:

pronunciation

Word stress

6 How many syllables are there in these words? Which ones are stressed? Put them in the correct groups below.

staircase telephone toiletries equipment atmosphere building
restaurant reception breakfast location laundry services



staircase



telephone

language focus

Comparatives and superlatives

7 Which part (A–D) of each sentence is incorrect?

1 Canal view rooms are usually more expensive that rooms at the rear.

A B C D

2 The new five-star hotel is the more modern hotel in the city.

A B C D

3 The Marconi is more far from the Rialto than the Londra Palace.

A B C D

4 Our hotel is not as busy in July than in August.

A B C D

5 The facilities in this hotel are older as those in the hotel beside it.

A B C D

Exercise 6

□□: staircase, building, breakfast, laundry

□□□: telephone, toiletries, atmosphere,
restaurant, services

□□□: equipment, reception, location

Exercise 7

1 D (than)

2 B (most)

3 A (further / farther)

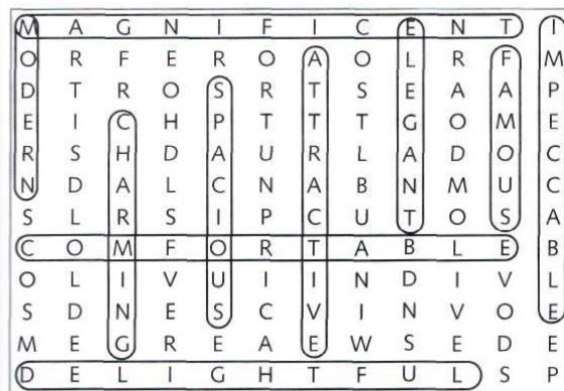
4 D (as)

5 C (than)



Language focus:

Exercise 8



8 Find the ten positive adjectives in the puzzle that describe hotels.

