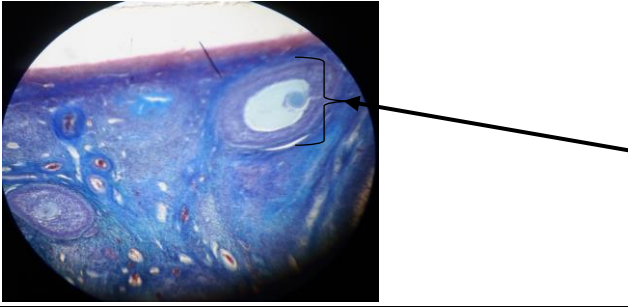


Name:

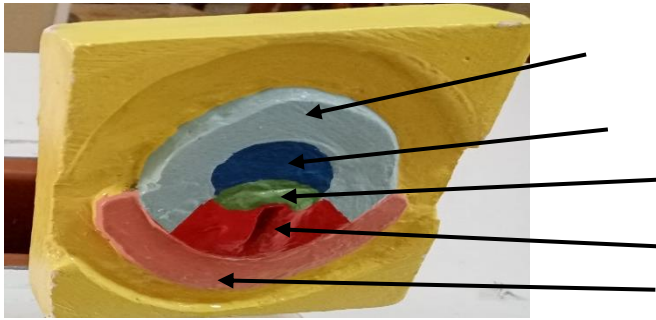
P. Embryology Examination

group:

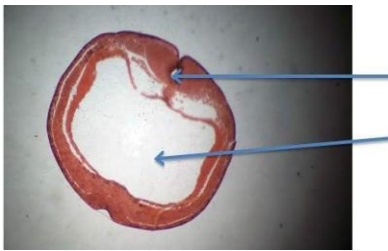
Q1/A-Identify the slide, what is the pointed part name?



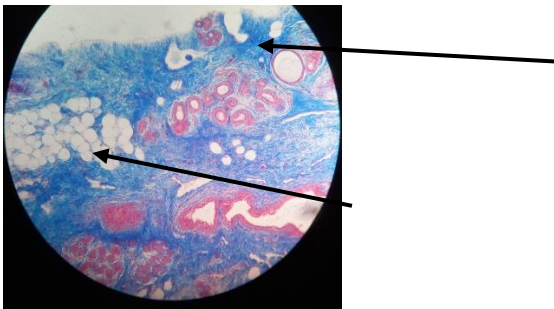
Q2-A- Identify the sample, what are the pointed parts?



Q3- Identify the slide? What are the pointed parts



Q4/ Identify this slide , what are the pointed parts?

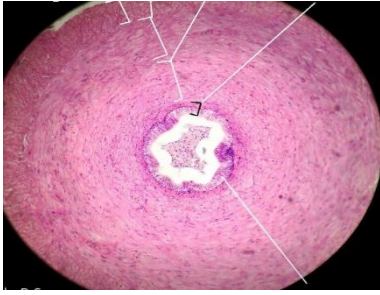


Q5/ A-Compare between frog and chick in the following terms:

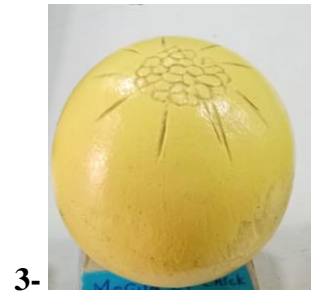
Name of animal	Type of cleavage?	Type of fertilization?	Type of egg according to distribution of yolk?	Type of egg according to amount of yolk?
1-frog				
2- chick				

B- count the extraembryonic membranes:

Q6-Identify the slide, what is the type of epithelium lining it?



Q7- Identify these samples carefully:



Q8- a- Write the function of the following :

1- corpus luteum

2- Leydig cell:

b- write the embryonic origin (germ layer of the following:

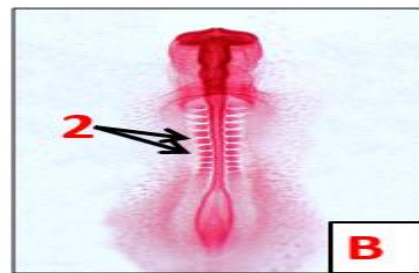
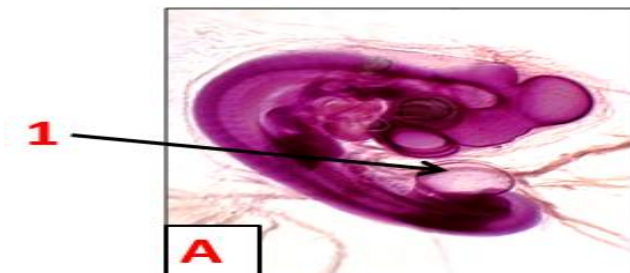
1- notochord

2- thymus

3- rectum

4- muscles:

Q9-Identify the slide, what is the pointed part?



Q10- A- Draw by a diagram spermatogenesis cell line:

B-define the following terms:

1- Primordial follicle:

2- Chalaza: