

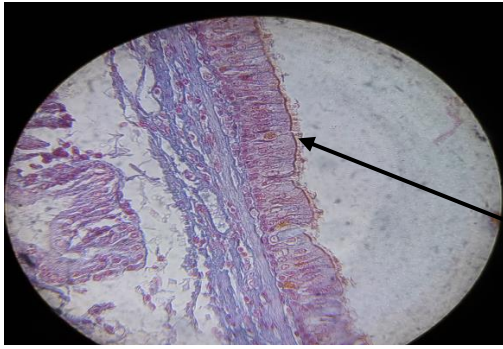
Name:

P. Histology Examination

group:

Q1/A-Identify the slide?

B-What is the pointed part name and function?

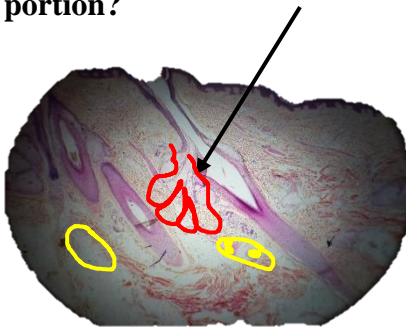


Q2- A- Draw and label sarcomere:

B- Define sarcomere:

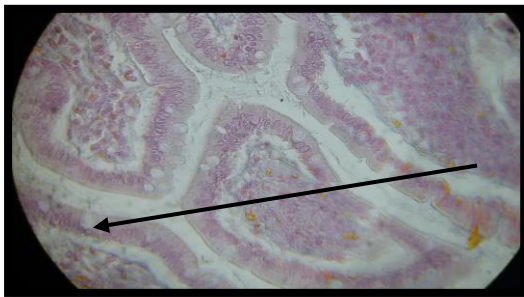
Q3-A- Name only this gland?

B-What is the type of this gland according to the shape of secretory portion?



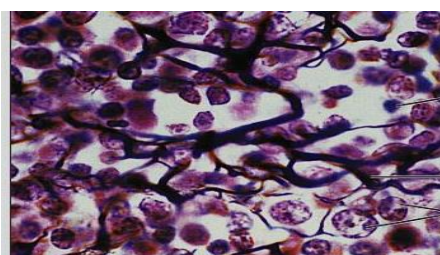
Q4/ A- Write the type of epithelium and location of this slide ?

B-What is the pointed part name and function?



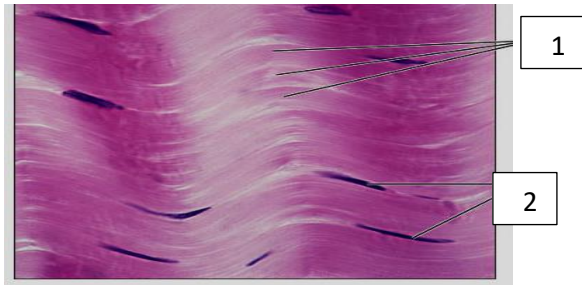
Q5/ A- Identify the slide accurately?

B-Count the types of glands according to nature of secretion:



Q6- A- Identify this tissue accurately

B- What are the pointed parts?



Q7- Write the type of epithelium found in :

1-proximal convoluted tubule

2- eyelid

3- small intestine

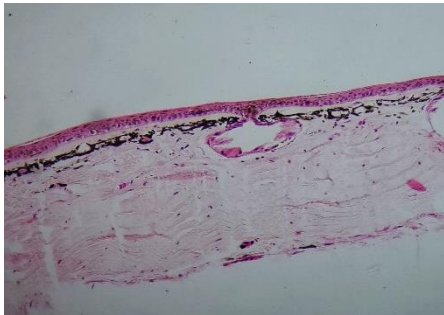
4-Sweat gland

Q8- A- Write two differences between the following: muroid and mesenchymal connective tissue :

B- In dehydration----- is used while ----- is used for clearing the specimen.

Q9- A-Identify this slide?

B- What is the function of Purkinjean fiber ?



Q10- Match between column A and B (by putting letters only)

Column A	Answer (letter)	Column B
1-sweat gland		A: tubuloalveolar
2- salivary gland		B: simple coiled tubular
3-jejunum of cat		C: simple un branched tubular
4-stomach of cat		D: simple branched tubular

Note: 10 marks for each question

Good luck

Lecturer Israa M.