

Name:

Q1-Fill the blanks with a suitable words:

(20 mark)

- 1- ----- is divided into two regions papillary and reticular region.
- 2- -----is the process of formation of organs.
- 3- Epididymis is lined with a type of epithelium called -----epithelium.
- 4-Oviduct subdivided into 4 regions: -----,-----,-----,-----.
- 5-Three Accessory glands found in male -----,-----,-----.

Q2-Tabulate the differences between the followings:

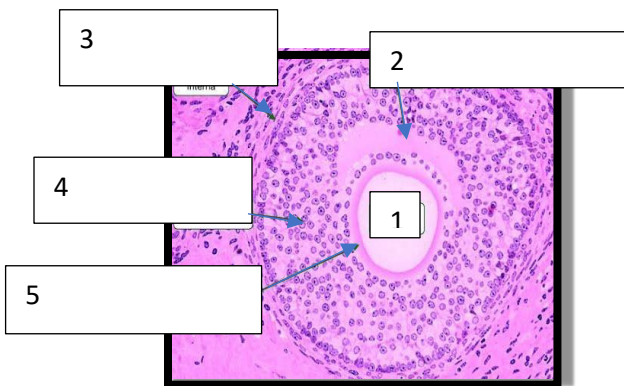
(20mark)

a- Thick and thin skin (3 differences)

b-primordial follicle and early secondary follicle

Q3- A-Identify this figure with labeling it.

B- Draw by a diagram spermatogenesis (20mark)



Q4- Match between column A and B (by putting letters only)

(20mark)

Column A	Answer (letter)	Column B
1- blastocyst		A: surface layer of cells of blastula
2- blastoderm		B: blastula in mammal
3-blastocoel		C: space within the blastula
4-Ectoderm		D: inner germ layer
5-Endoderm		E-outer germ layer

Q-5 Count the following:

(20mark)

1-Types of egg according to distribution of yolk with example for each type:

2-Types of epidermal cells with function of each cell: