

Lecture 1

English for University Students 2022-2023

College: Administration & Economics

Department: Economics

Grade: 1

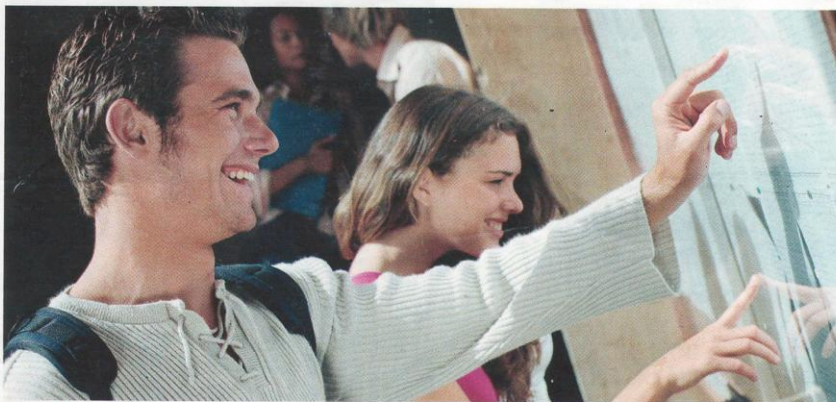
Group: All

Jalal A. M. Ameen

Gefus2012@gmail.com

Listening: Freshers' week

1.1 Vocabulary for listening Academic life



A Activating knowledge

1. 1.1 Listen and discuss some statements about education.
2. 1.2 Listen to some students. Do they agree or disagree with each statement?

At school, English is more useful than Mathematics.

I think that's true.

Actually, I don't agree. Maths is much more useful than English.

B Developing vocabulary

1. Complete each sentence with a word or phrase from the list on the right.
 - a. The academic year in my country starts in October. All the university students go back then.
 - b. When does the second _____ start? Is it in February?
 - c. Which _____ are you in? Education? Mathematics? Modern Languages?
 - d. Which _____ gives the Science in Education lectures?
 - e. How many _____ are in the Faculty of Education? I mean, how many people work there?
 - f. Where is the student _____ at this university? Where do the students live?
 - g. This is a large _____. There are ten faculty buildings, the library, the Resource Centre and the Students' Union.
 - h. A university student is called a _____ in the first year.
2. 1.3 Listen and check your answers.

academic (adj)
access (n and v)
accommodation (n)
article (n)
assignment (n)
bursar (n)
campus (n)
contribute (v)
crèche (n)
deadline (n)
dean (n)
degree (n)
faculty (n)
fee (n)
field trip
fresher (n)
graduate (n and v)
hall of residence
head (n) [of]
in charge [of]
lecture (n)
lecturer (n)
librarian (n)
look up (v)
participation (n)
professor (n)
projector (n)
research (n)
resource centre
responsible [for]
schedule (n)
semester (n)
sixth form
sixth form college
socialize (v)
staff (n)
Students' Union
subject (n)
tutorial (n)
undergraduate (n)
vice chancellor (n)

child care
reflected in

Education / listening

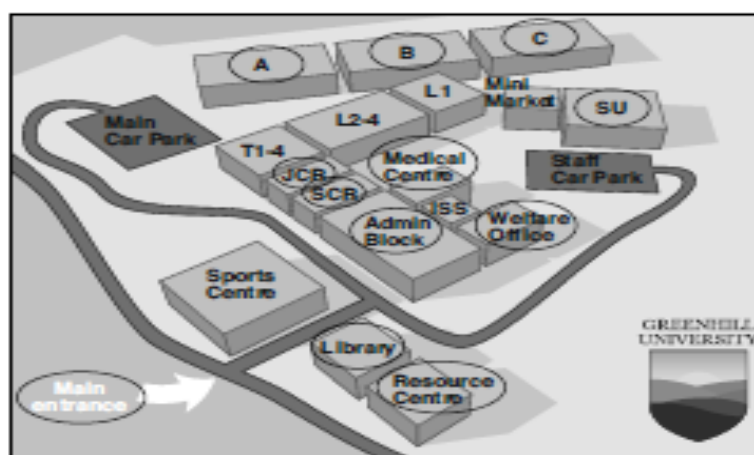
1.1 Vocabulary for listening: Academic life Page: 11

| | |
|-----------------|---|
| Freshers' week | Any student in their first year at university. is simply a new student's first week at university, |
| academic | relating to schools, colleges and universities, or connected with studying and thinking, not with practical skills |
| accommodation | a place to live, work, stay, etc. in |
| deadline | a time or day by which something must be done |
| dean | a high-ranking official in a college or university who is responsible for the organization of a department or departments |
| fee | an amount of money paid for a particular piece of work or for a particular right or service |
| responsible | to have control and authority over something or someone and the duty of taking care of it or them |
| assignment | a piece of work given to someone, typically as part of their studies or job |
| campus | |
| degree | |
| field trip | |
| staff | |
| undergraduate | |
| postgraduate | |
| Vice chancellor | |
| | All the vocabulary from the list P. 11 |

Real-time Listening / a speech of welcome 1.2 C Page.12

| | |
|----------------------|--------------------------------------|
| campus | the university buildings |
| resources | things to help with studying |
| fees | money for a course |
| Welfare Office | place to go if you have problems |
| JCR | Junior Common Room |
| SCR | Senior Common Room |
| hall of residence | accommodation for students on campus |
| Students' Union (SU) | special place for students |

Answers



| Place | What happens? |
|----------------------|--|
| Library | You can read, do research, find information, study there. |
| Resource Centre | You can use the Internet, do research, work on computers, use the printers. |
| Administration Block | You can go there if you have a problem with fees, accommodation, parking permits, etc. |
| Welfare Office | You can go here if you have a personal problem. |
| Medical Centre | You can go here if you are ill. |
| JCR, SCR | You can go here if you need to speak to a lecturer. |
| Halls of residence | This is where students live. |
| SU (Students' Union) | There are facilities for students: bar, gym, café, clubs, etc. |
| ISS | This is for international students. Go there if you have a problem with your visa. |

B- Match the words and definitions 1.9 Tr/ 09

Assignment – a piece of work to do on your own.

Deadline - the time to give in an assignment.

Research - reading articles.

Journals - academic magazines.

Tutorial - a small discussion.

C- Write the definition in each case 1.10 Tr/10

- Food court – a place with lots of different restaurants.
- Vending machine - machines with food and drink.
- Laundrette – you can wash your clothes there.
- Crèche It's a place to leave your children for a few hours.
- Gym - It's a place to do exercise.

Page.15

How does the speaker define each action below Tr.1.14

1.4- B

1. **Revising:** It's going over something again, something you have studied before.
2. **Contributing:** It means taking part in something, like a tutorial. It means giving your ideas or your opinion.
3. **Parting:** It means saying goodbye.
4. **Graduating:** It means getting your degree and leaving university.
5. **Advising:** It is telling someone what to do.
6. **Disagreeing:** It is saying you don't agree.

1.5 Applying new listening skills: Living and studying in Britain

Answers

| word | definition |
|-----------------|--|
| greetings | It means / is saying hello to someone. |
| handshakes | It is a way of greeting someone. |
| eye contact | It means / is looking at someone when you speak to them. |
| social distance | It means / is how close you stand to someone. |
| gender equality | It means that men and women are equal. |
| participation | It means taking part in something. |

Q/ Complete each sentence with a word or phrase from the list.

- a. The year in my country starts in October. All the university students go back then.
- b. When does the second start? Is it in February?
- c. Which are you in? Education? Mathematics? Modern Languages?
- d. Which gives the Science in Education lectures?
- e. How many are in the Faculty of Education? I mean, how many people work there?
- f. Where is the student at this university? Where do the students live?
- g. This is a large..... There are ten faculty buildings, the library, the Resource Centre and the Students' Union.
- h. A university student is called a in the first year.

Grammar

- Noun + a general words

S V GW M. info

A food court + is + a place + with many different restaurant

1.4 Grammar for listening Defining

We can define a noun with a general word plus more information. ①

| subject | verb | general word | more information |
|-------------------|------|--------------|---|
| A food court | is | a place | with many different restaurants. |
| A dean | is | a person | in charge of a faculty. |
| A vending machine | is | a machine | with food and drinks. |
| An article | is | a text | in a newspaper, journal or on the Internet. |
| A schedule | is | a list | of days and times. |

Action + means / is + gerund + M. info

- Rsearch+ means + finding + information in books or on the Internet.

We can define an action with *means / is* and another verb in the gerund. *research* *meeting*

| subject | verb | gerund | more information |
|-------------|-------|---------|--|
| Research | means | finding | information in books or on the Internet. |
| Access | | getting | in. |
| Greeting | is | saying | hello. |
| Socializing | | meeting | people in your free time. |

- Greeting is saying hello.