

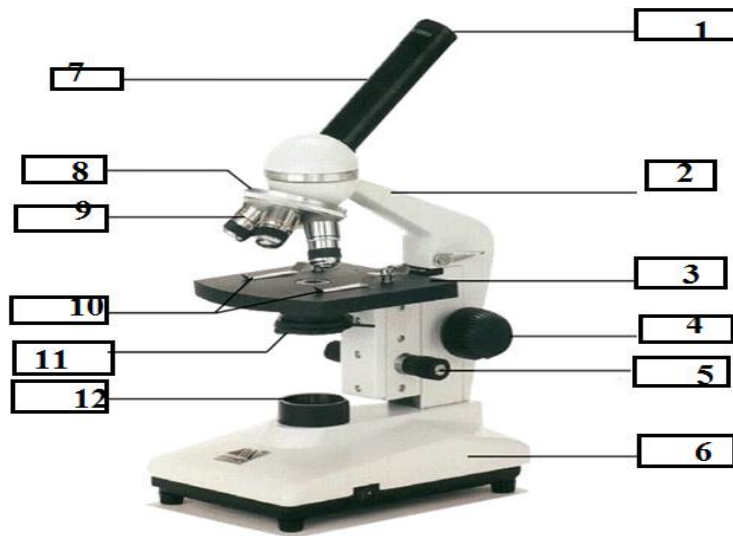
Salahaddin University-Erbil

College of Education

Department of Biology

Question Bank of Practical Zoology

Q1-Identify these parts of the microscope.



Q2- Calculate the power of magnification of a slide if the ocular lens is 10X and the objective lens is 40X.

Q3-Write two main laboratory safety rules and recommendations which are very important.

Q4-write all types of microscope. Define the type you are commonly used in the lab.

Q5- Write the main functions of the following organelles in the cell: -

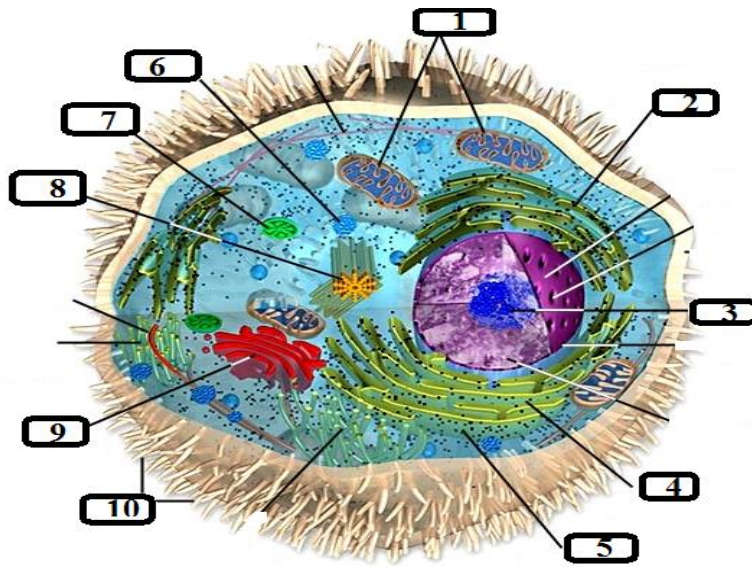
- 1- Mitochondria
- 2- Golgi apparatus
- 3- Ribosome
- 4- Centrioles.

Q6-write three main differences between animal and plant cells.

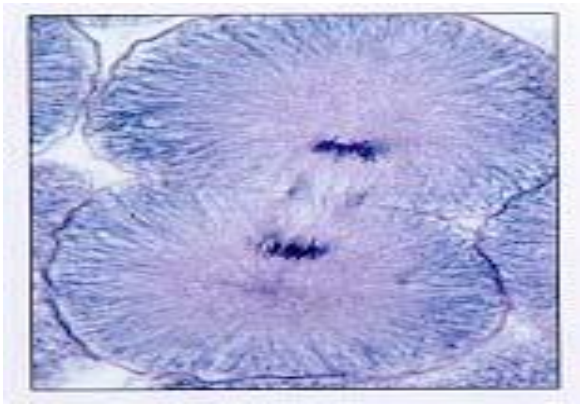
Q7/define these parts of the microscope.

1. Coarse Adjustment Knob
2. Eyepiece (ocular lens)
3. Stage
4. Revolving Nosepiece
5. Objective Lenses

Q8-Identify these parts of animal cells.



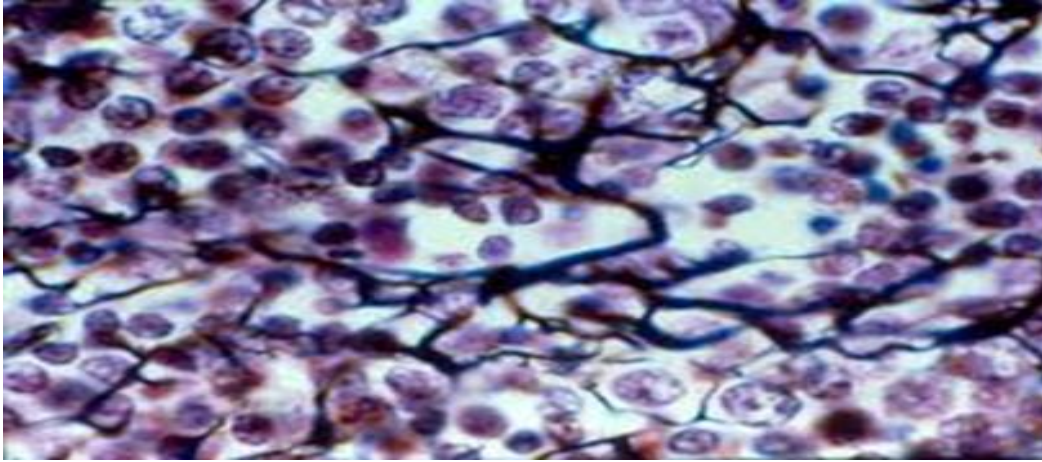
Q9-Identify this slide?



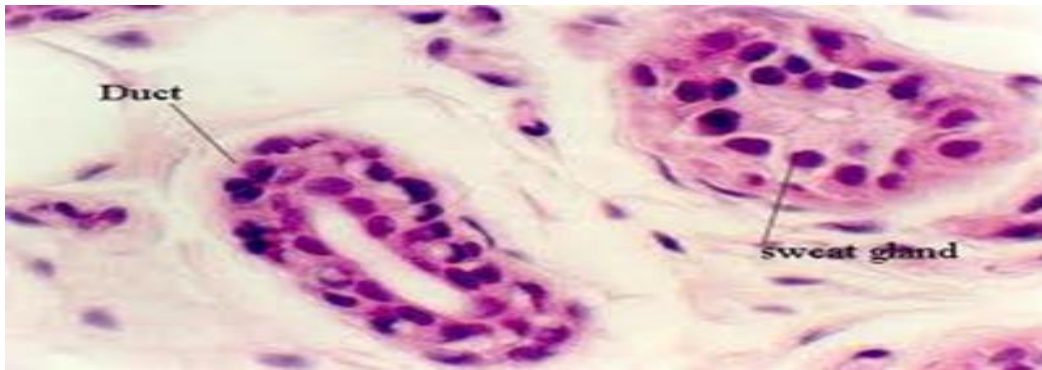
Q10- What are the end products of these two processes: -

- 1- Mitosis cell division
- 2- Meiosis cell division

Q11- Identify This Tissue? Where It's Found?

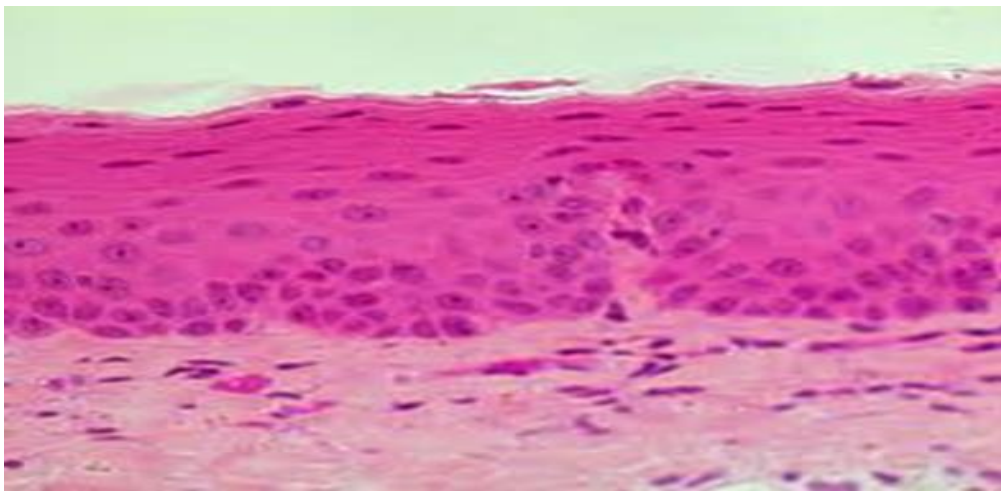


Q12-Identify this slide? Where is found? What is the main function?



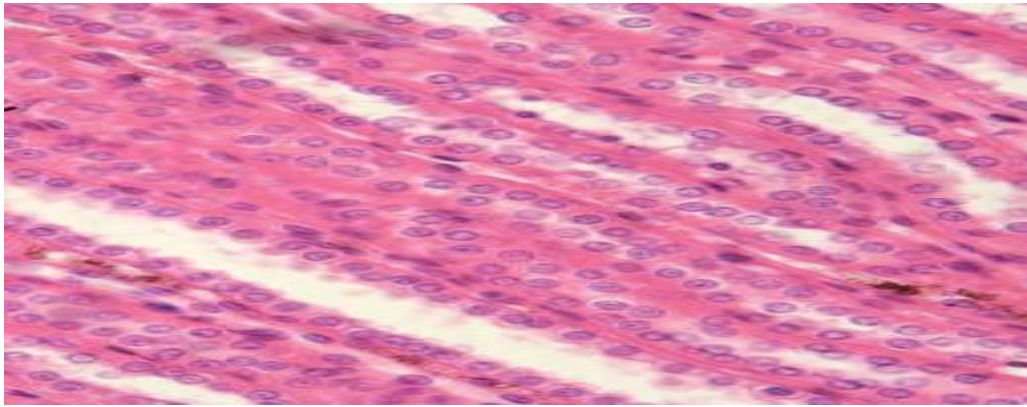
Q13- Write the types of loose connective tissue and their location in body.

Q14- Identify this slide? Where is found? What is the main function?

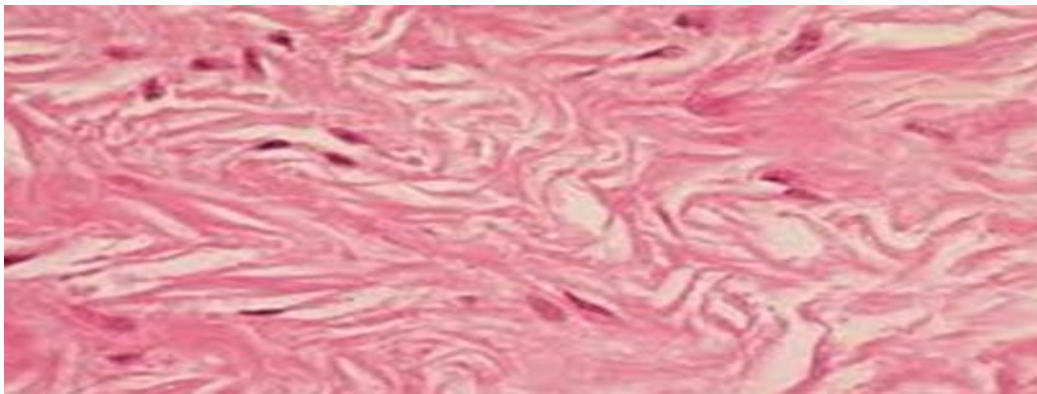


Q15-Write general characteristics of connective tissue?

Q16- Identify This Tissue? Where It's Found?

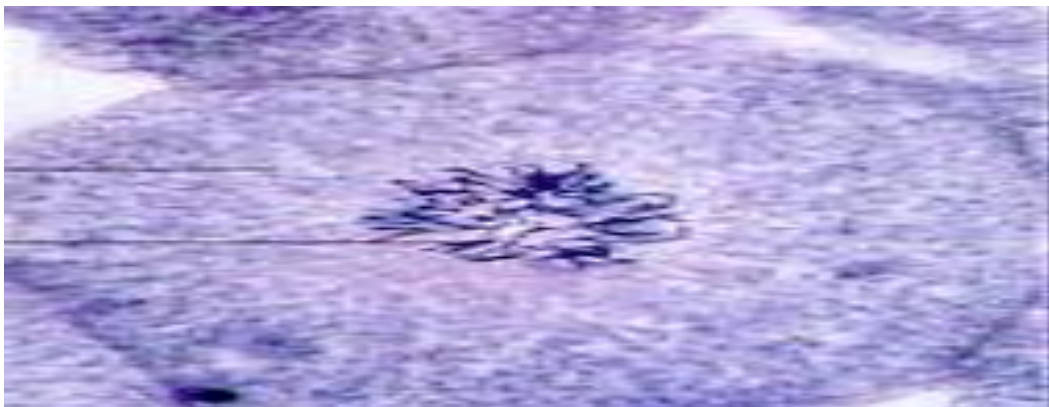


Q17- Identify this slide? Where it's found? What is the main function?



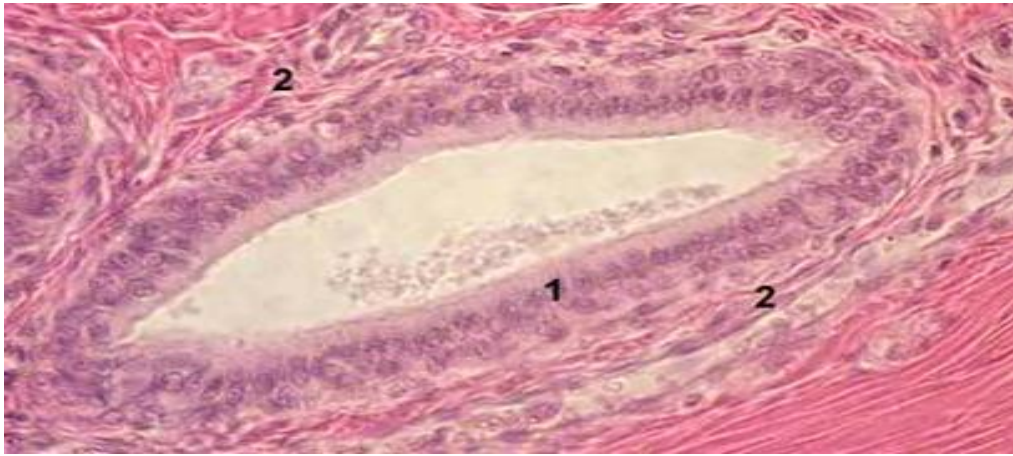
Q18-Write the types of loose connective tissue and their location in body.

Q19-Identify this slide?

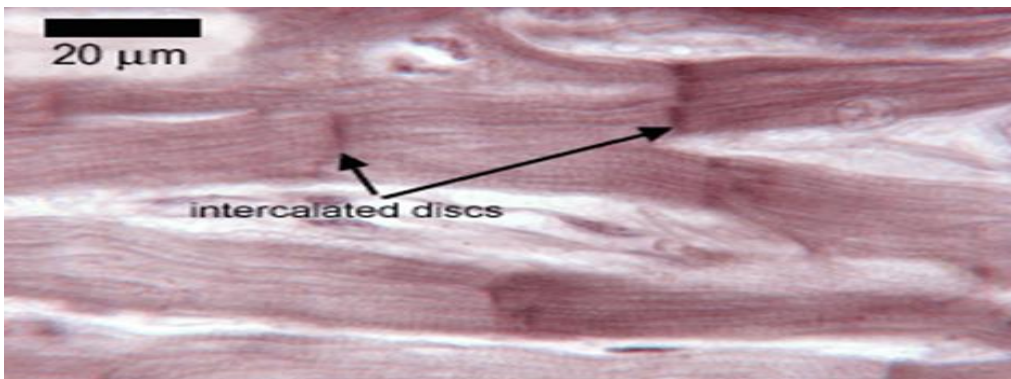


Q20- Which connective tissue consider as supporting connective tissue?

Q21- Identify this slide? Where its found? What is the main function?



Q22-Identify this slide. Where it is found?



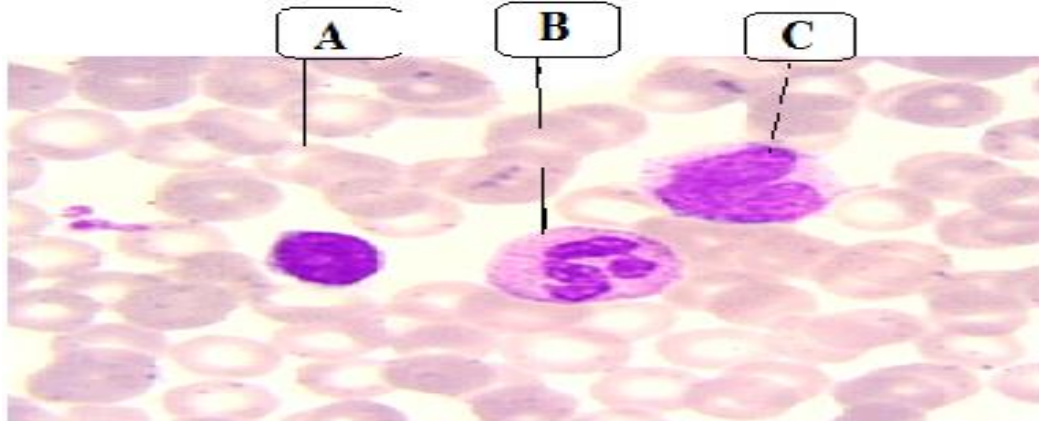
Q23-Write types of nerves with their function.

Q24-Write all types of cartilage with their location.

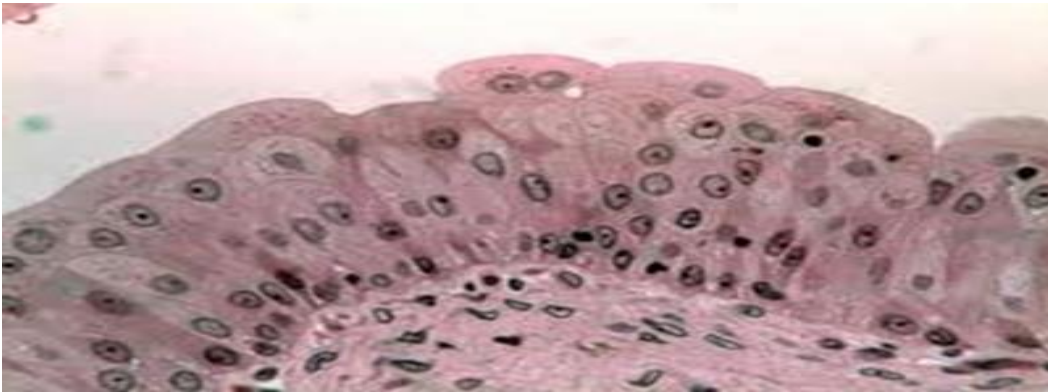
Q25- Identify this slide?



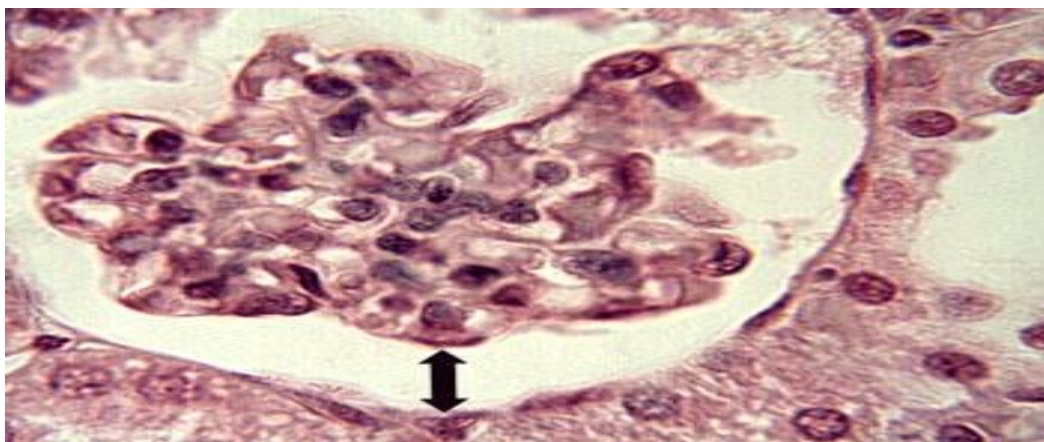
Q26-identify these parts?



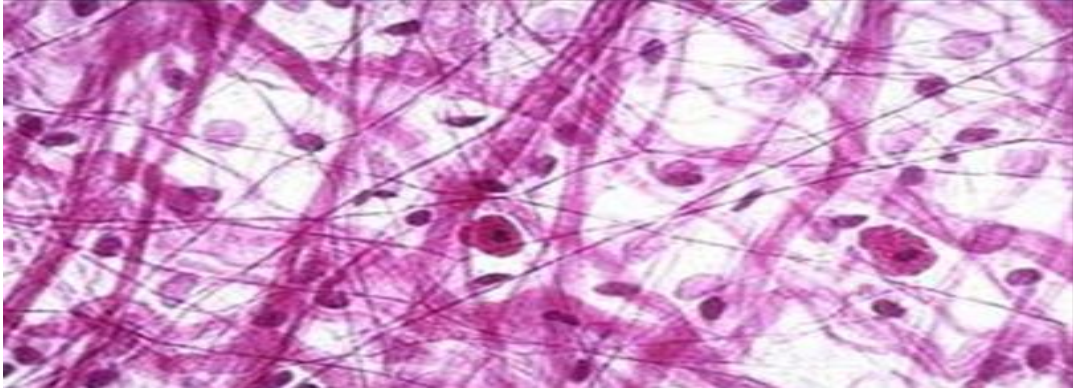
Q27-Describe this slide. Identify this tissue.



Q28-Identify this slide? where it is found?

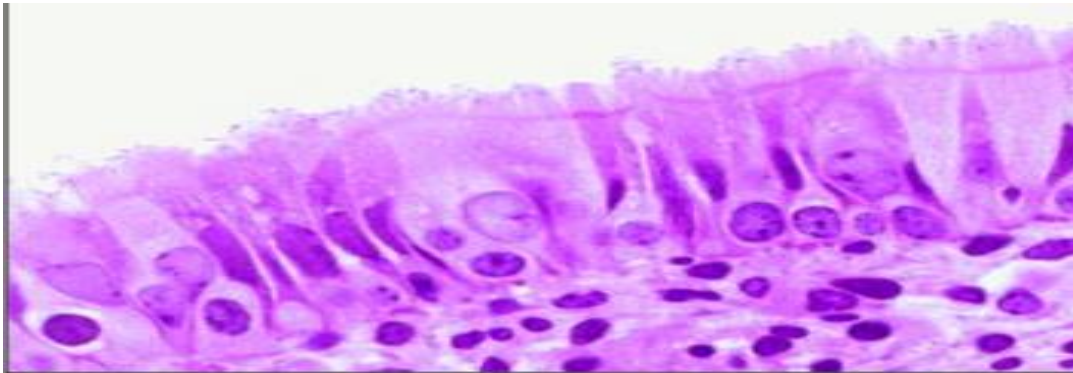


Q29/ Identify this slide? Where is found?



Q30- Write the types and components of Matrix Ground Substance.

Q31-Identify this slide and where is found.

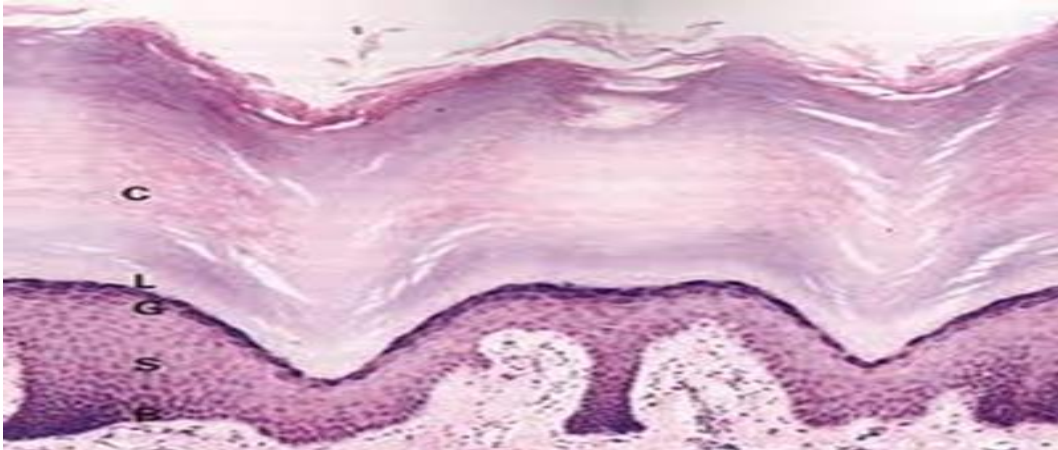


Q32-count types of Epithelial Tissue on the basis of structure and function.

Q33-Write location and function of ciliated columnar epithelium tissue.

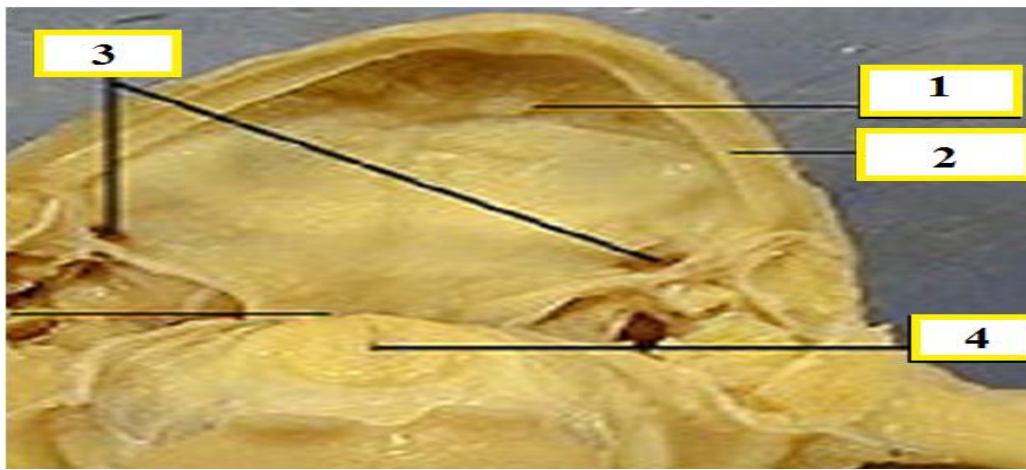
Q34-write types of glandular epithelium?

Q35-Identify this tissue. where it is found?



Q36-count all types of connective tissue with their location.

Q37-Identify the labeled parts.



Q38-Identify the labeled part and mention its function?



Q39-What is the difference between the cranial nerves and spinal nerves?

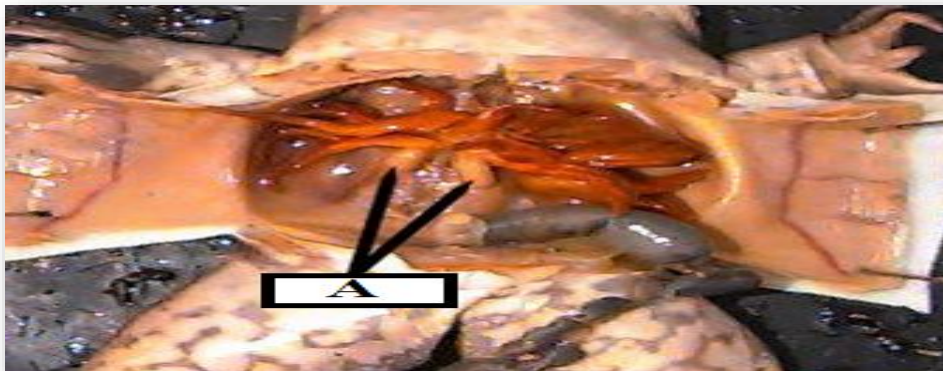
Q40-Count the ways of respiration in adult frog? Which way of respiration mostly depended on?

Q41-Identify the labeled parts?



Q42-

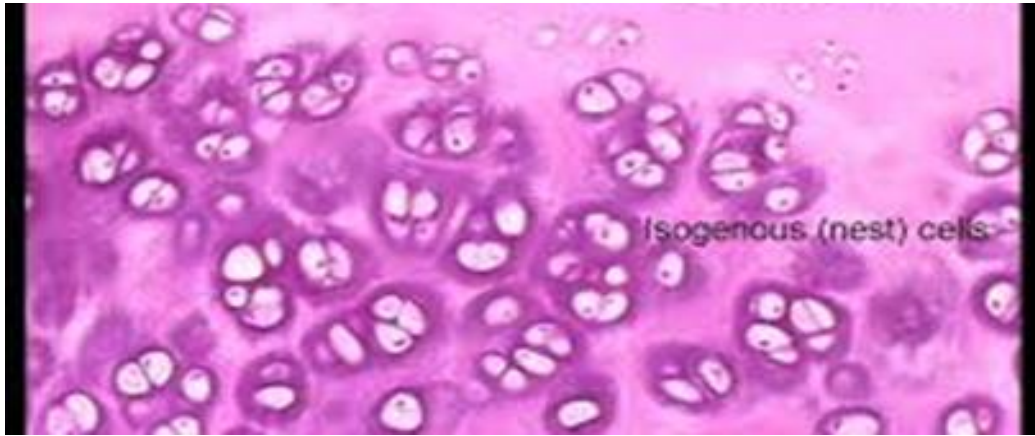
A-Identify the labeled part ?



Q43-Write the class and order of frogs.

Q44-write the scientific name of the frog.

Q45-Identify this slide. Write other types of this tissue.

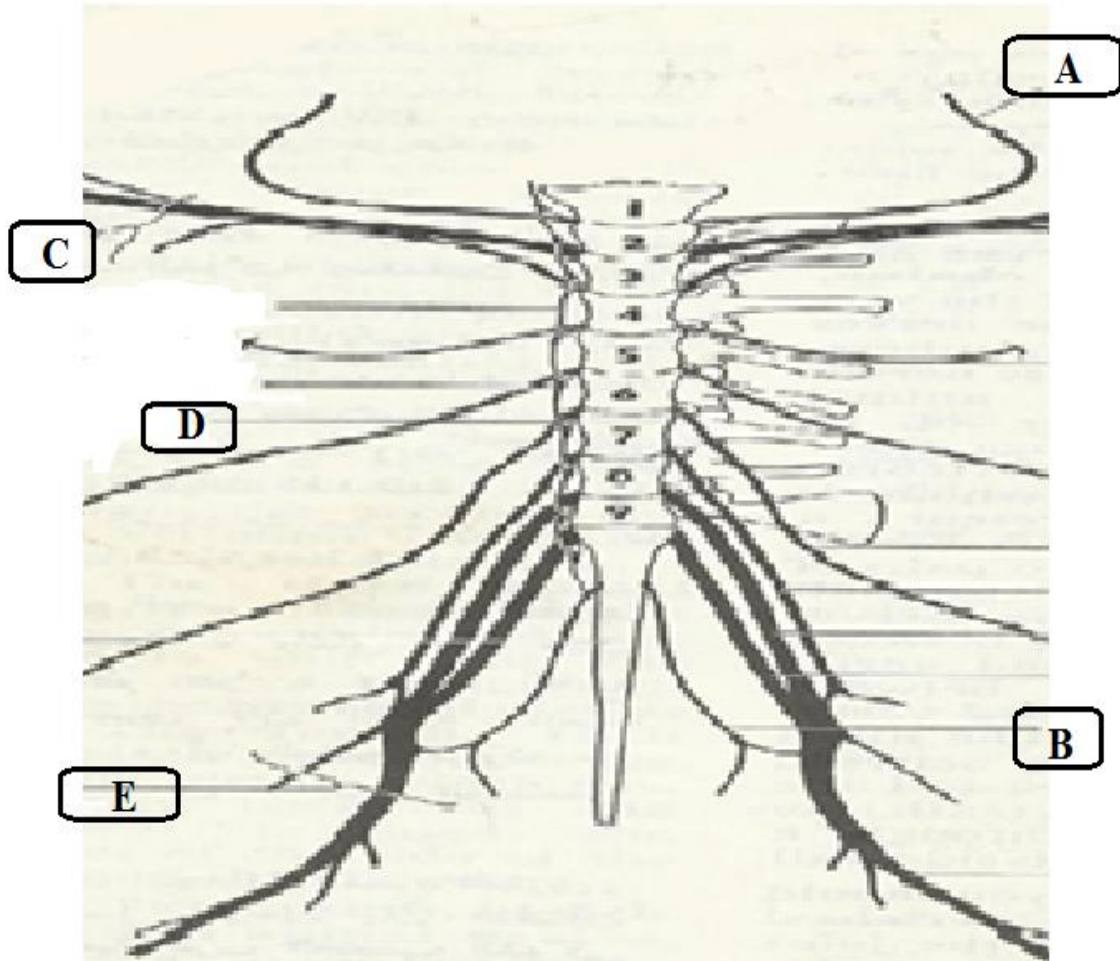


Q46-Write the name of the stains you are using in the preparation of blood smear.

Q47-Why you are used flame in the preparation of squamous smear?

Q48-write all brain parts of the frog.

Q49-Identify nerve parts of the frog.



Q50. Write the function of these parts of the frog.

1. Spleen
2. Cloaca
3. Pancreas
4. Gall bladder
5. Fat bodies

Q51-Write the major digestive glands in the frog.

Q52-Count parts urinary system of the frog.

Q53-Draw and label the urinogenital system of the frog.

Q54-Write the function of these parts

1. Seminal Vesicles
2. Oviducts
3. Ova or Eggs
4. Urinary Bladder
5. Ostium

Q55-When frog floats on the surface of water how does respiration? Write the amount obtained by this type.

Q56-When frog is in the tadpole stage how respired?

Q57/Count types of neurons in frogs and draw them.

Q58/What is the function of the neurons in a frog?

Q59/ nerve cell consists of what?

Q60/ classify frog?

Q61/Write the phylum and family of the frog.

Q62/How can you distinguish between male and female frogs?

Q63/ What are the functions of

Long hind limb

Webbed fingers of hind limb

Cloaca

Vocal sac

Q64/Why frogs cannot move their head?

Q65/Respiration in amphibians is done in different ways, count them.

Q66/Pulmonary respiration is done by 1. 2. 3. 4. 5. 6.

Q67/draw and label the brain in the frog.

Q68/write the function of the cranial nerve and spinal nerve.

Q69/Write the name of

First pair of spinal nerve

Joining of 7, 8, and 9 spinal nerve

10th pair of spinal nerve

Q70/ alimentary canal of a frog is composed of what? Write it consequently?

Q71/ count digestive glands in frogs?

Q72/Write the nutrition type for frogs.

Q73/Write the function of

Small intestine

Liver

Pancreas

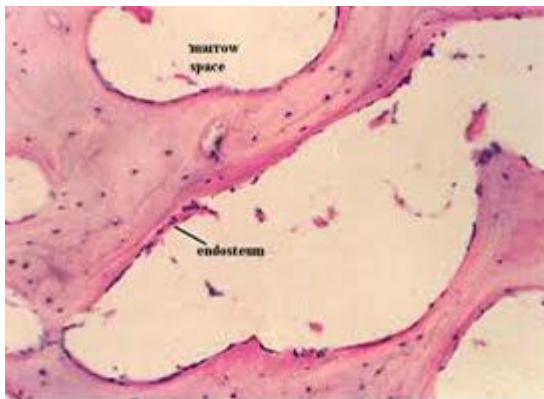
Duodenum

Bladder

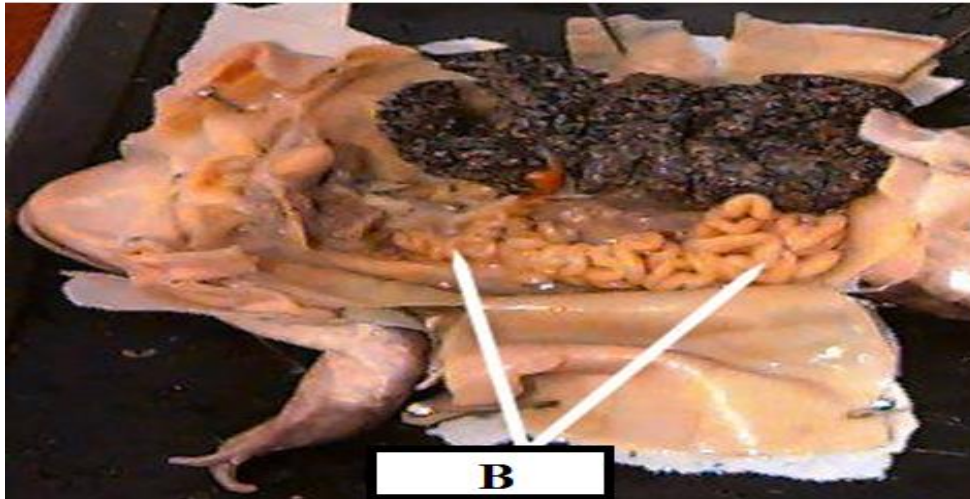
Q74/differentiate between male and female reproductive organs in frogs?

Q75/Define spawning.

76/Identify this slide.

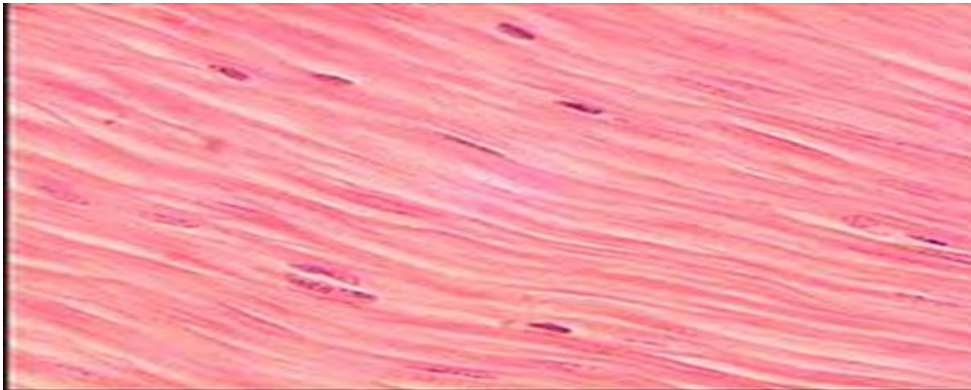


Q77-Identify the labeled part



Q78/ Draw and label nervous system of frog.

Q79/ Identify this slide? Write other types of this tissue?

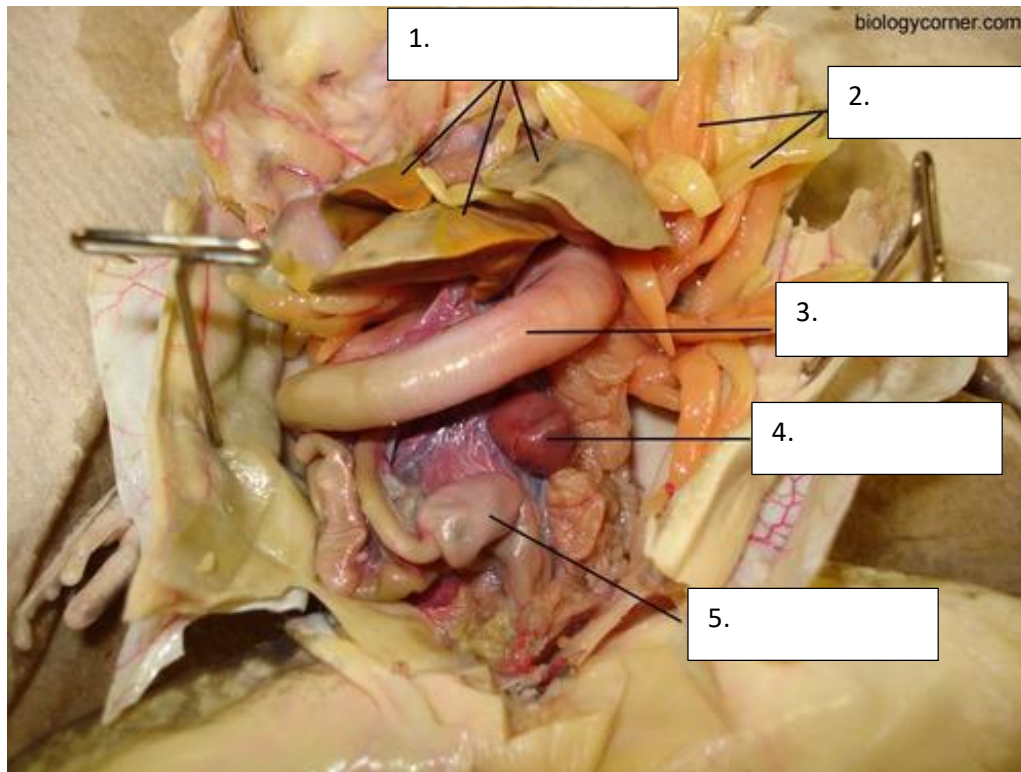


Q80/what's the function of the keratin in the skin?

Q81/ -Fill the blank with suitable word:(10mark)

- 1- The digestive enzyme gland secretes into the duodenum is called
- 2- The digestive system of a frog consists of two parts, and
- 3- The blood smear is stained by and diluted with water, wait for 10 minutes.
- 4- Frogs have a short esophagus because
- 5- The stomach leads to a long narrow tube called
- 6- Nervous tissue consists of ----- and associated -----.
- 7- Motor neurons carry information from toward the
- 8- The small intestine consists of-----, -----, and -----.
- 9- A spherical bluish-green sac is seen in between the two lobes of the liver called-----
-.
- 10- A semi-transparent ----- which extends from the lower eyelid can cover the eye completely.

Q82/ Identify the point parts for the following label. (10mark)



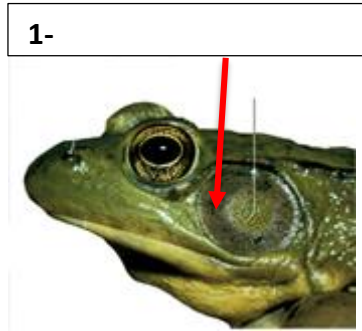
Q83. Write the Function of the following term. (10mark)

1. Vocal sac:
2. Sensory neuron:
3. Urinary bladder:
4. Maxillary teeth:
5. Cloaca:

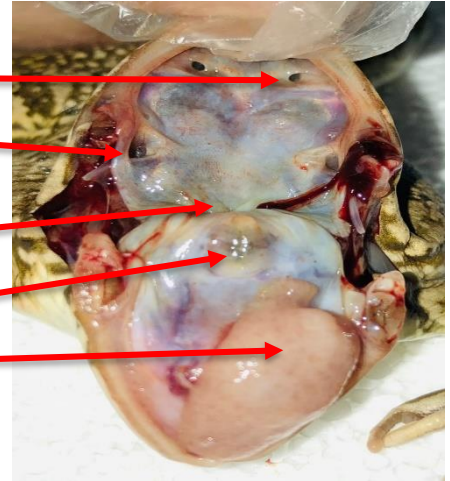
Q84/Match words in column (A) with words in column (B). (10mark)

A	B
() 1- Mesentery	A. Amphibia
() 2- Duodenum	B. Transmit impulses
() 3- Ileum	C. Receive impulses
() 4- Order	D. Chordate
() 5- Dendrites	E. Forms with the stomach a U-shaped loop embracing the pancreas
() 6- Axon	F. Third part of the intestine
() 7- Nerve cell	G. Transmit electrical impulses
() 8- Supporting cell	H. Anura
() 9- Phylum	I. Non-conducting cells
() 10- Class	J. holds the ileum together

Q85/ Identify the point parts for the following label. (10mark)



- 1-
- 2-
- 3-
- 4-
- 5-



Q86/ Draw and label the typical neuron. (10mark)

Q87/ What's the pancreas? write the function of it? (10mark)

Q88/ A. Write the sexes and Identify of the pointed Parts. (10mark)

