

Q: Write differences between

- 1- Ribosome of prokaryotic and eukaryotic cells
- 2- Cilia and flagella
- 3- Classical and modern cell theory
- 4- Benign and malignant tumor
- 5- Sexual and asexual reproduction
- 6- Primary and secondary lysosomes
- 7- Rough and smooth endoplasmic reticulum

Q: Draw and label the followings

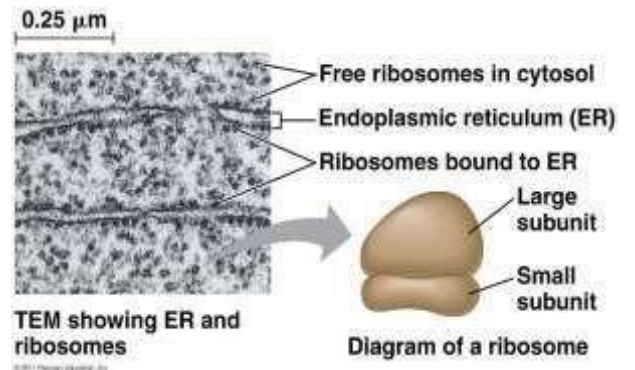
- 1- Pump and channel in the plasma membrane
- 2- Role of mitochondria in apoptosis
- 3- Plasma membrane of the animal cell
- 4- Structure of mitochondrion
- 5- Indirect method of immunohistochemistry
- 6- Phospholipid molecule
- 7- Glycoprotein in cell membrane
- 8- Ingest of bacteria by cells
- 9- Golgi apparatus
- 10- Junctions between cells

Q: Define the following

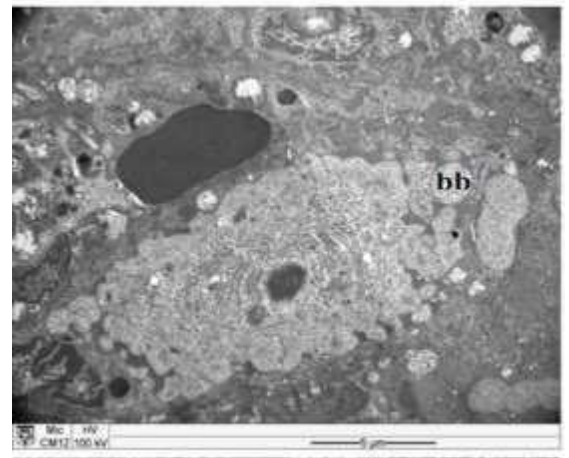
1. Fluid mosaic model cell membrane
2. Phospholipid
3. Cell theory
4. Microtubules
5. Centrosome
6. Cell membrane
7. Reproduction
8. Cell
9. Cytoskeleton
10. Desmosome

Q: Depending on image answer the following questions

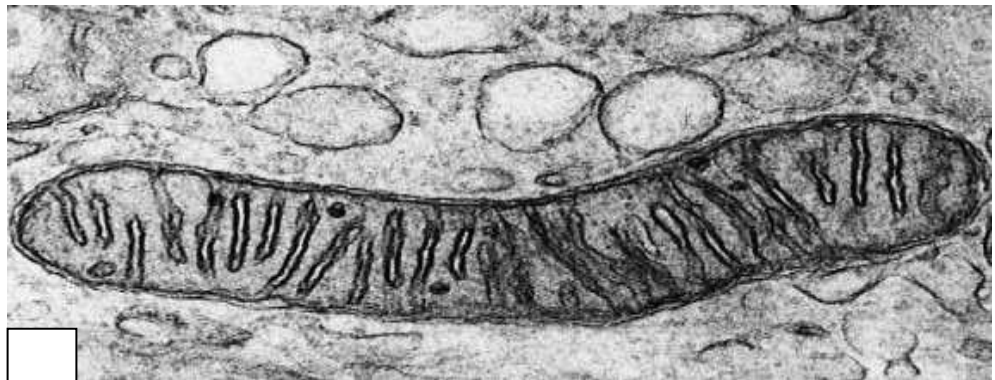
- 1- What is function of this organelle?
- 2- Where is it found in the cell?
- 3- What is composition of it?



Q: Identify type of cell death and define it



Q: Write about membranes of the bellow slide?



- Q: Write about phospholipid molecule without figure
- Q: Write about free radicals and mention two examples of free radicals
- Q: Write about function and composition of centrosome
- Q: Write about plasmodesmata
- Q: Write about approximate composition of cell membrane
- Q: Write about fluid mosaic model of cell membrane
- Q: Write about ligand-regulated gates and voltage-regulated gates
- Q: Write about amphipathic molecules
- Q: Write about dark and light area of the electron micrograph
-
- Q: What are functions of cytoskeleton?
- Q: What gap junction?
- Q: What are types of fermentation?
- Q: What is purpose of using tungsten and vacuum system in TEM?
- Q: What do you know about hypertrophy and hyperplasia?
- Q: What are hemidesmosome?
- Q: What are methods which used in cell counting?
-
- Q: Is Osmium tetroxide perfect or imperfect fixative and why?
- Q: Which one is acidic medium, outside or inside of lysosome? Why?
- Q: Why inner membrane of mitochondria folded to form cristae?

Lecturer

Khder H. Rasul