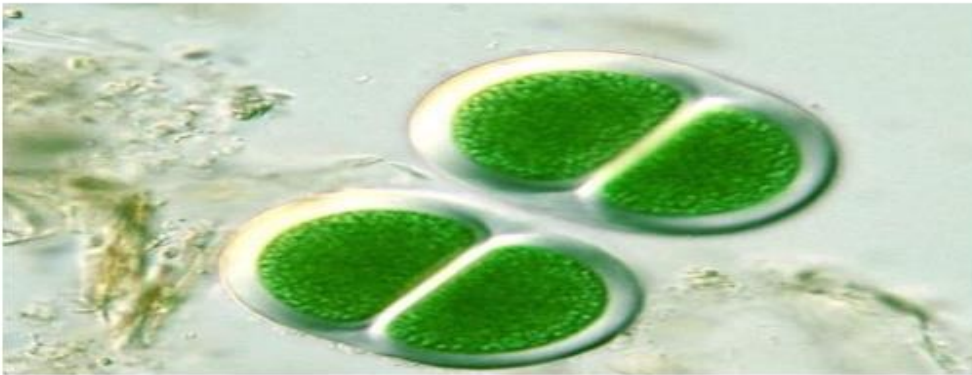
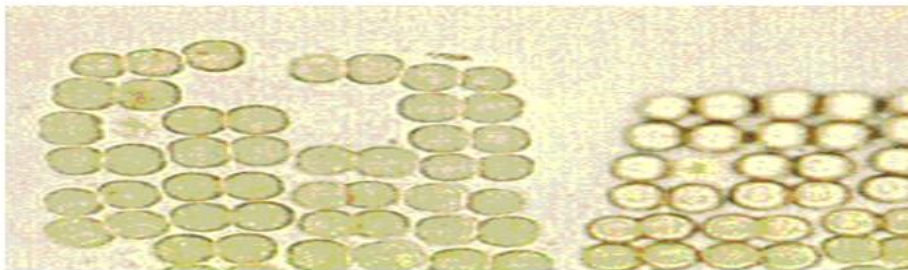


Q21: A/ Identify this slide; and then classify it ?



B/ The colonies of *Microcystis* sp. are spherical but older colonies are typically irregular they often have a blackish or reddish appearance because of

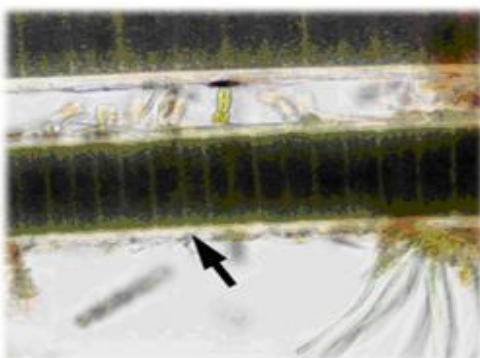
Q22:A/ Identify this slide **and** then describe it, in briefly.



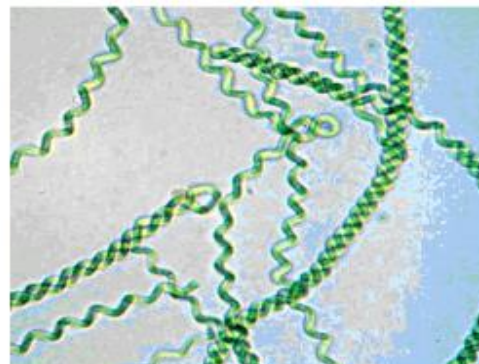
B/Cyanophyta are prokaryotic and the pigments are found in peripheral portion of the protoplast include:.....;.....;.....and

Q23: A/Identify these two slides , to which **class , order ,family** they belonging to ?

B/ Write the differences between them, in briefly.



A

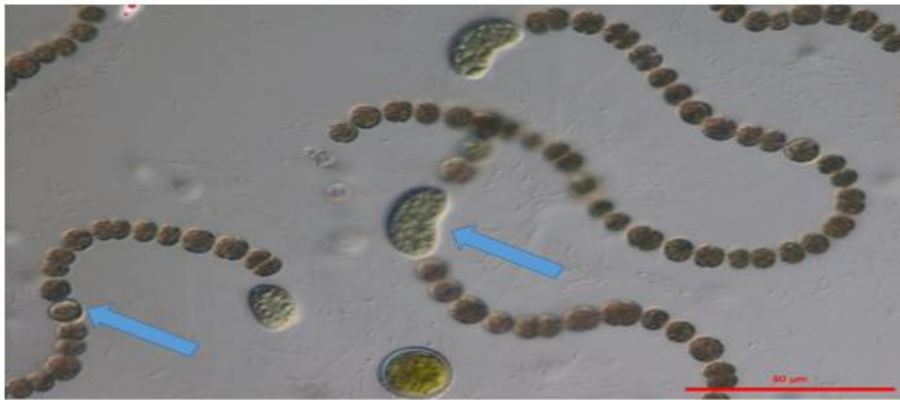


B

Q24: A/ Identify this slide **and** Write the classification of it.
B/ Draw and label of it.



Q25: A/ Identify this slide and then Classify it.
B/What are these parts which pointed to; defined **one** of them?



Q26: A/ Identify this slide, then classify it.

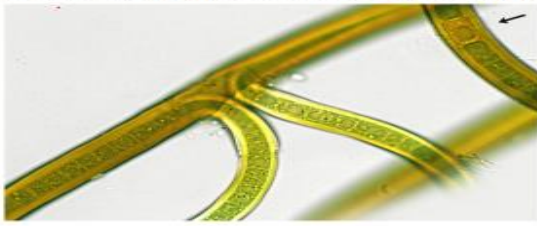
B/Describe the structure of it ;and what is the part that pointed to it ?



Q27: 1- A/Identify these two slides **A** and **B** .

B/To which **class** and **order** they are belong?

2- Write the differences between them in **one sentence**.



A



B

Q29:A/The class chlorophyceae can be divided in to two orders
.....and

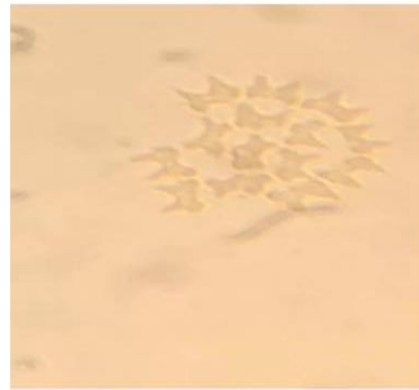
B/Identify this slide and write the common name of it.



Q28: 1- Identify this slide; Write the classification of it

2- A/what is the common name of it?

B/ Write the description of it; in brief .



Q30: A/ Identify this slide .



B/Compare between **Pandorina** sp. and **Euodoria** sp. According to :-

1. Their shape of colonies.
2. The number and shapes of cells.
3. The arrangement of the cells.

