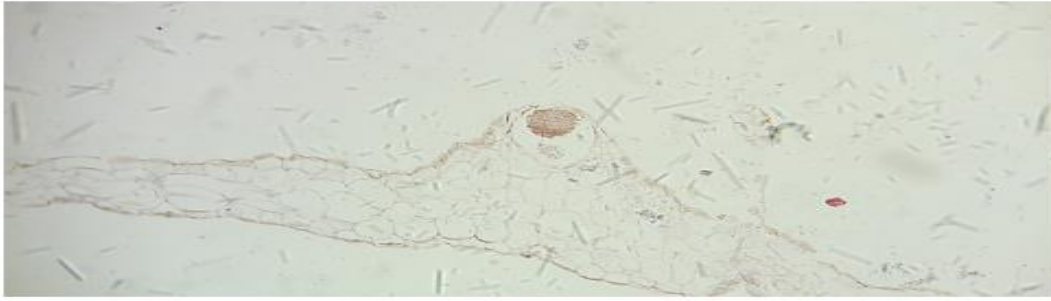


Q1: A/ Identify this slide; and then **classify** it ?

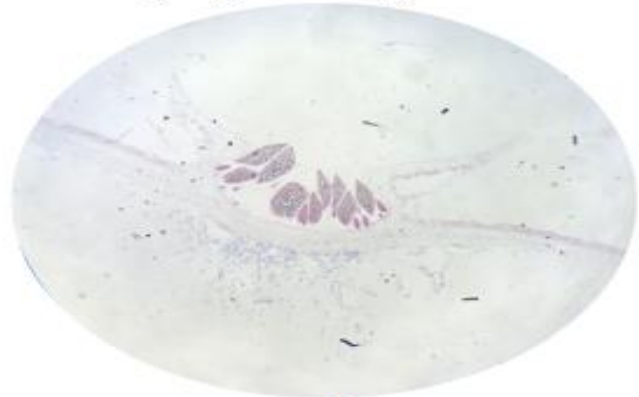


B/ Draw and label the anatomy of the thalrus (T.V.S) of the species above.

Q2:A/ 1. Identify these two slides **A & B**.
2. To which genus they are belonging; **classify** it.



A

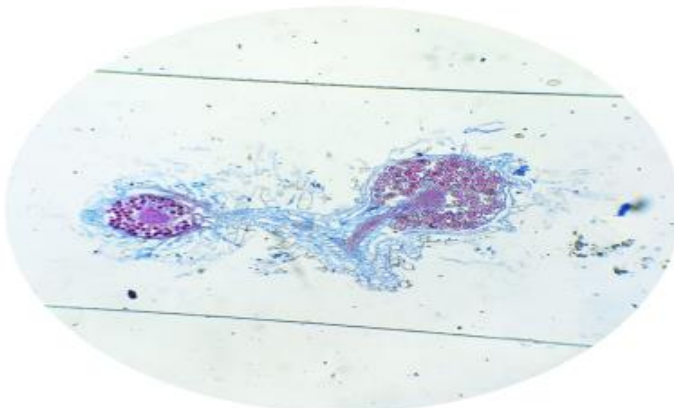


B

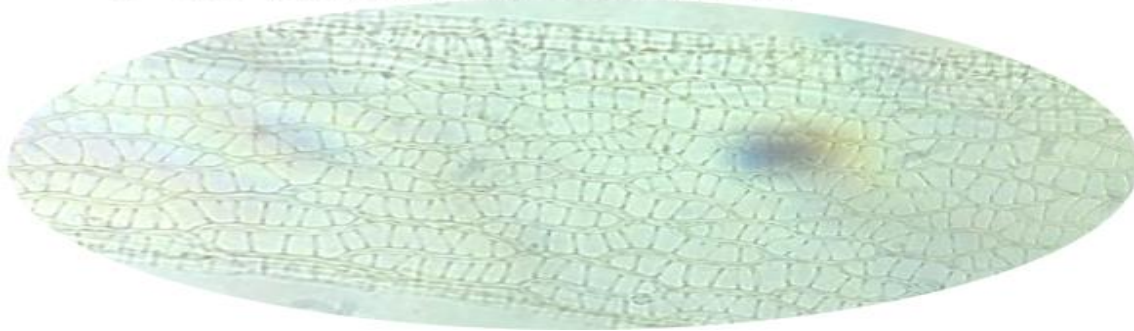
B/ The anatomy of thallus in **this species** is dorsoventrally differentiated to upper.....region and lower.....region.

Q3: A/ Identify this slide .

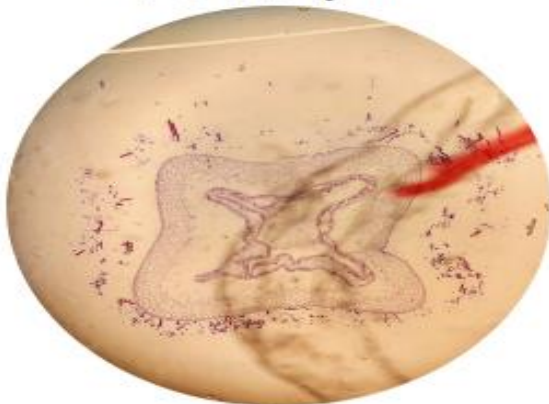
B/ Define and describe it; in brief.



- Q4:** 1. Identify this slide; **Explain** it.
 2. to which **Division** and **sub class** they are belonging?
 3. Write the **common name** of it.
 4. Write **(two)** importance of this genus.



- Q5:** **A/** These two slides **A & B** belong to one genus;
 Identify them.
B/ Classify it.

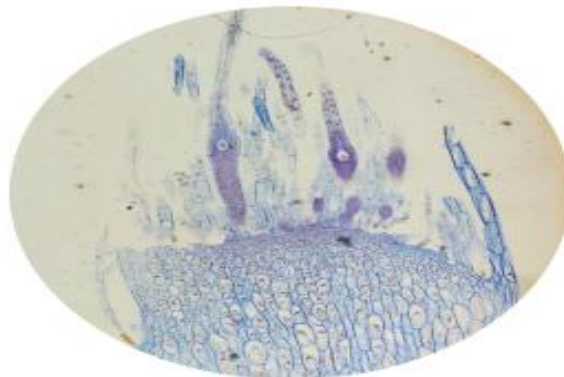


A



B

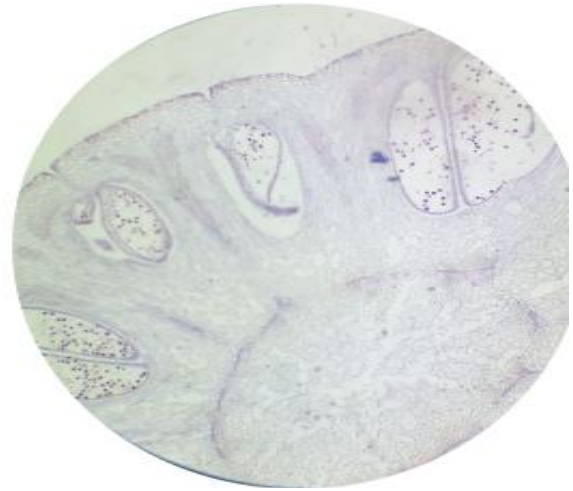
- Q6:** **A/** Identify this slide and then **Classify** it.



- B/** The great majority sporophyte of the **above genus** have the upper part of a capsule maturing into and

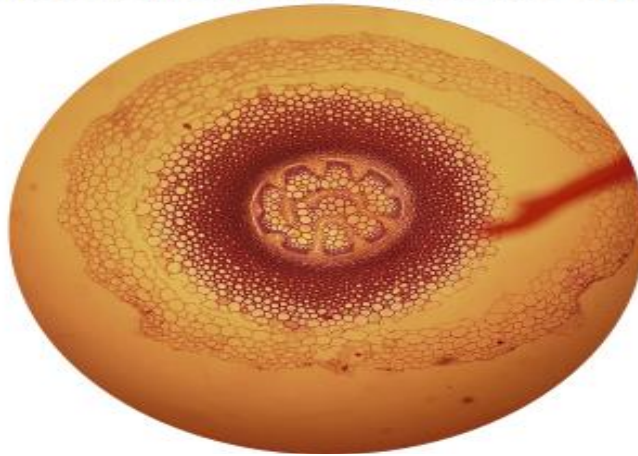
Q7:A/ Identify this slide; and write its **common name** of it.

B/ Write the systematic position of it .



Q8:A/ Identify this slide; To which **division** and **class** it is belong.

B/ Write about the main character of this class.

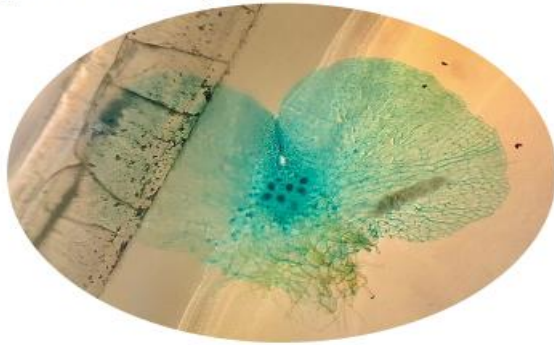


Q9:A/ Identify this slide.

B/ Mention the anatomical parts of this section .



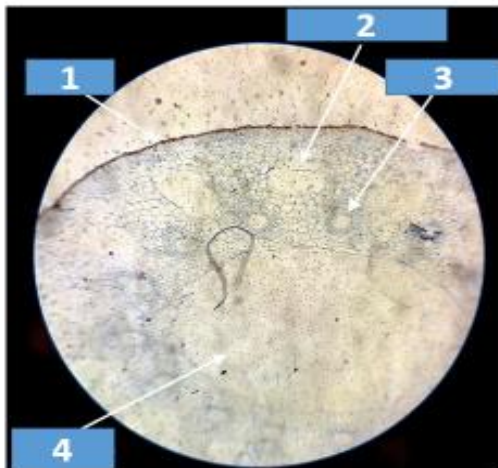
Q10: A/ Identify this slide .



B/ Write about **(two)** main general character of this slide.

Q11: A/ Identify this slide.

B/ Mention the pointed parts.



Q12: A/ Identify this slide according to pointed parts **1 & 2** ; and then **classify** it ?

B/ Tuberculae is.....and located in

