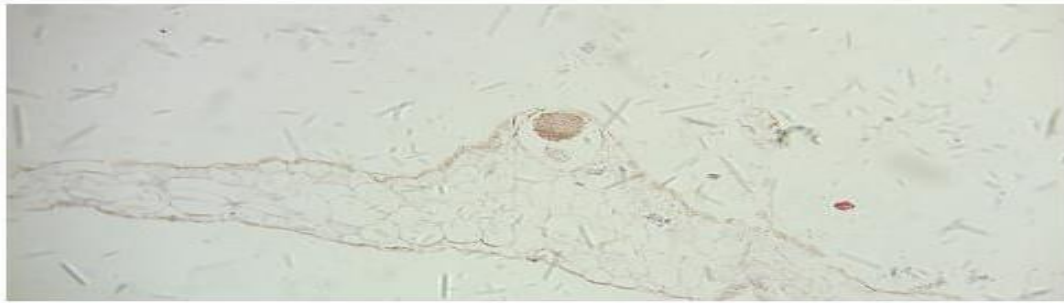


Archegoniate Question banks

Q1: A/ Identify this slide; and then **classify** it ?

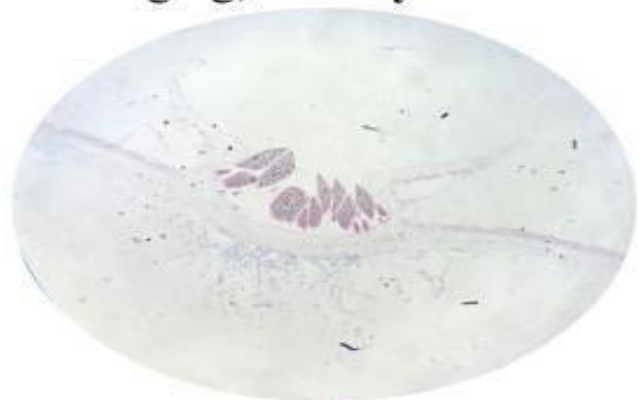


B/ Draw and label the anatomy of the thalus (T.V.S) of the species above.

Q2:A/ 1. Identify these two slides **A & B**.
2. To which genus they are belonging; **classify** it.



A

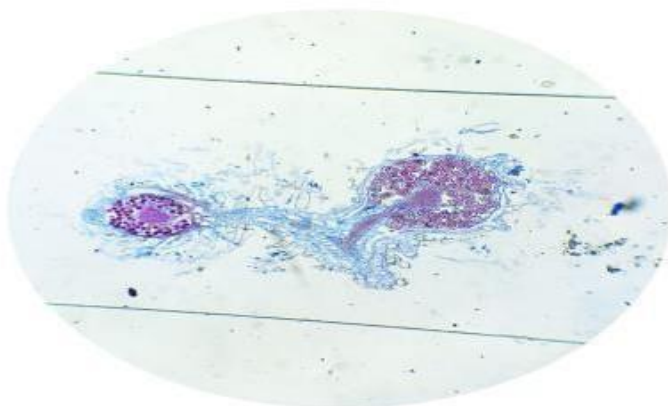


B

B/ The anatomy of thallus in **this species** is dorsoventrally differentiated to upper.....region and lower.....region.

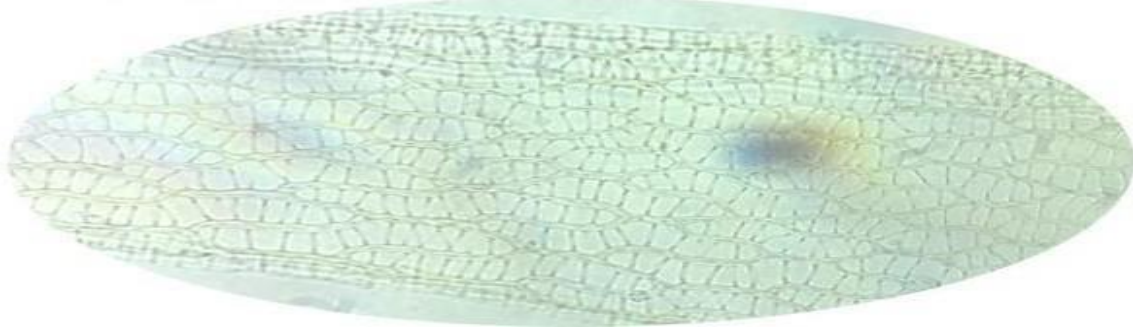
Q3: A/ Identify this slide .

B/ Define and describe it; in brief.



Archegoniate Question banks

- Q4:** 1. Identify this slide; **Explain** it.
2. to which **Division** and **sub class** they are belonging?
3. Write the common name of it.
4. Write (**two**) importance of this genus.



- Q5:** A/These two slides **A & B** belong to one genus;
Identify them.
B/ Classify it.

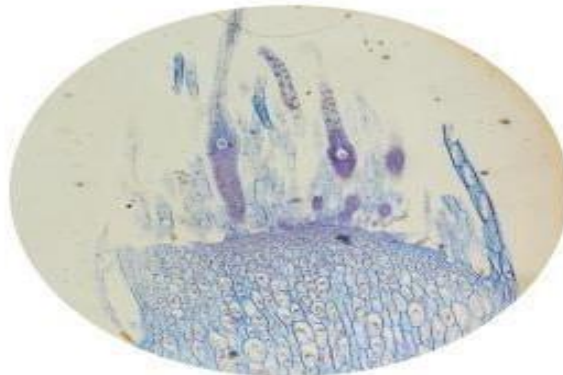


A



B

- Q6:** A/ Identify this slide and then **Classify** it.

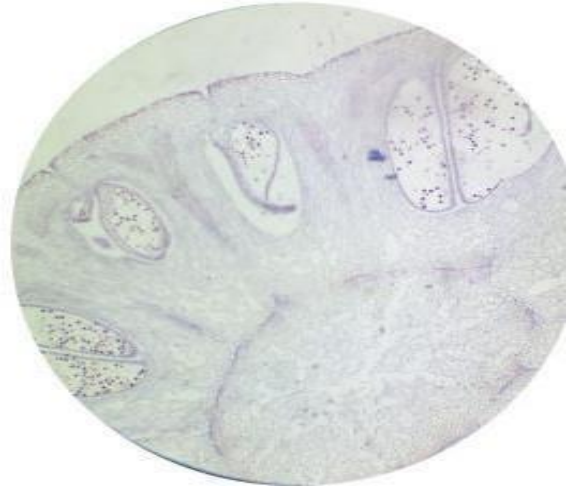


- B/** The great majority sporophyte of the **above genus** have the upper part of a capsule maturing into and

Archegoniate Question banks

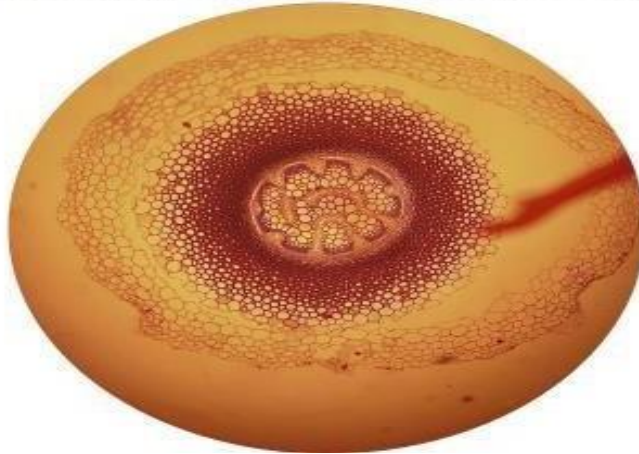
Q7:A/ Identify this slide; and write its **common name** of it.

B/ Write the systematic position of it .



Q8:A/ Identify this slide; To which **division** and **class** it is belong.

B/ Write about the main character of this class.



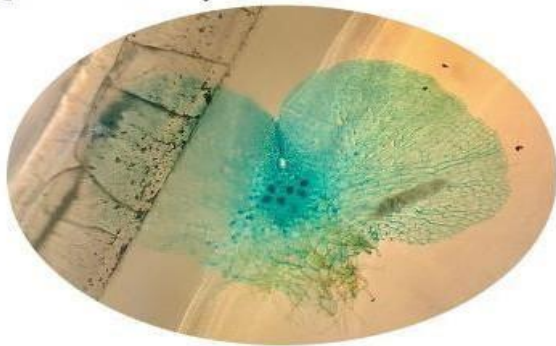
Q9:A/ Identify this slide.

B/ Mention the anatomical parts of this section .



Archegoniate Question banks

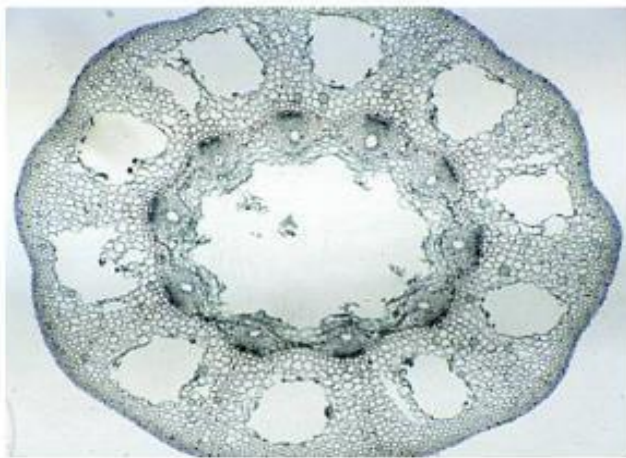
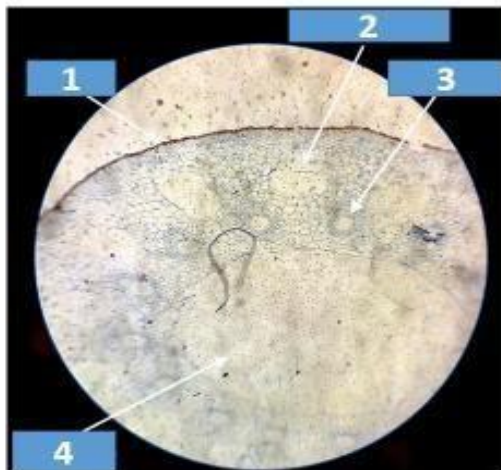
Q10:A/Identify this slide



B/ Write about **(two)** main general character of this slide.

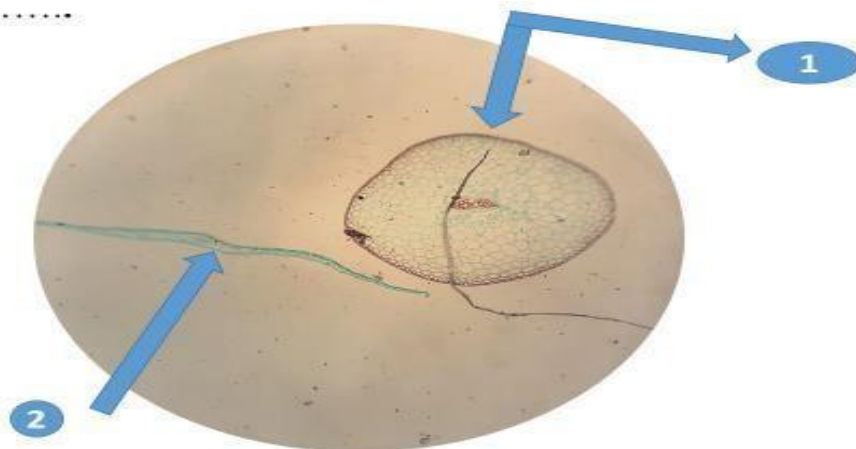
Q11: A/ Identify this slide.

B/ Mention the pointed parts.



Q12: A/ Identify this slide according to pointed parts **1** & **2** ; and then **classify** it ?

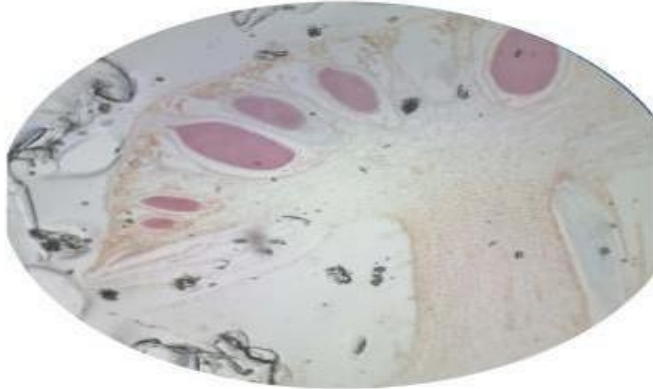
B/ Tuberculae is.....and located in



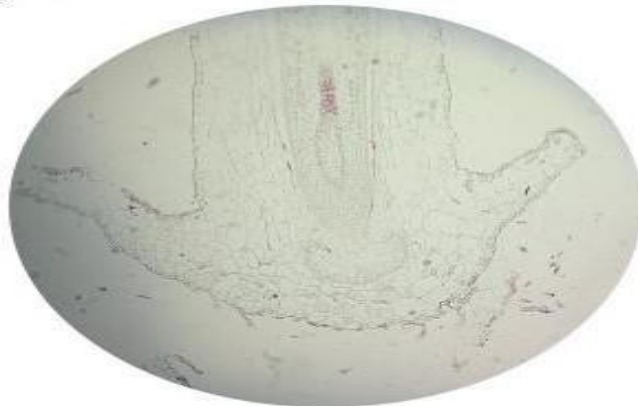
Archegoniate Question banks

Q13 : A/ Identify this slide; and then **classify** it ?

B/ Draw and label the external morphology of the thallus of this species showing sex organs on it.



Q14 : A/ Identify this slide; and write its **common name** of it.
B/ Classify it .



Q15 : A/ Identify this slide; and write its **common name** of it.
B/1. Classify it .

2. The sporophyte of this genus has Aerial branches of two types.....and

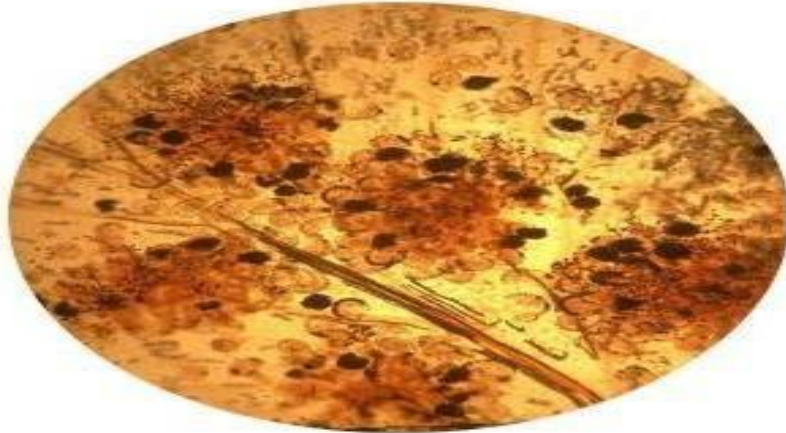


Archegoniate Question banks

Q16

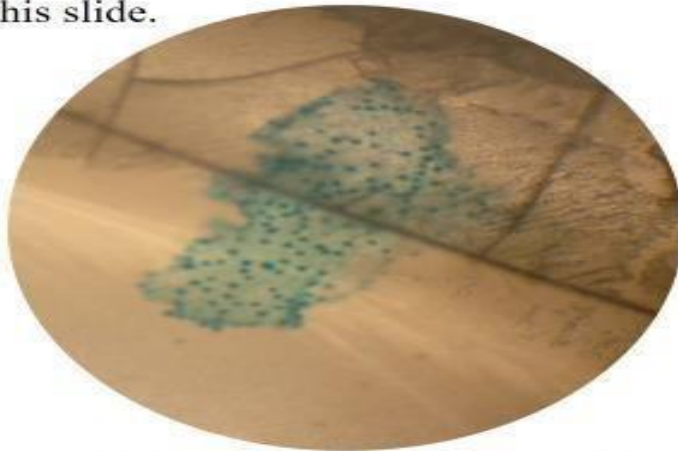
: A/ Identify this slide , and **define** it.

B/ Write about (**two**) of the general characters of it .



Q17

A/Identify this slide.



B/ What are the differences between class **Ligulopsida** and class **Eligulopsida**; and they are belonging to which **division**?

Q18

1. Identify this slide; **Explain** it.

2. to which **Division** and **sub class** they are belonging?

3. Write the **common name** of it.

4. Write **two** importance of this genus.



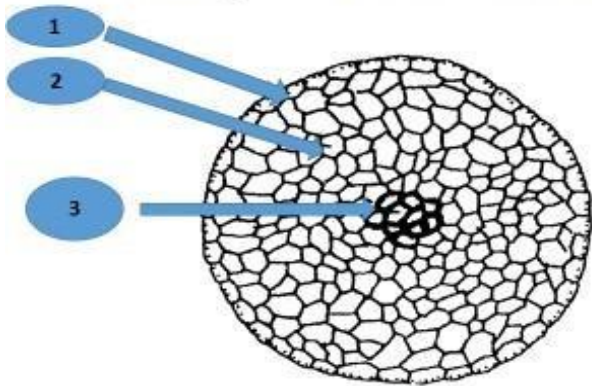
Archegoniate Question banks

Q19 : **A/** Identify this slide and then **Classify** it.
B/ Write the **common name** of it .

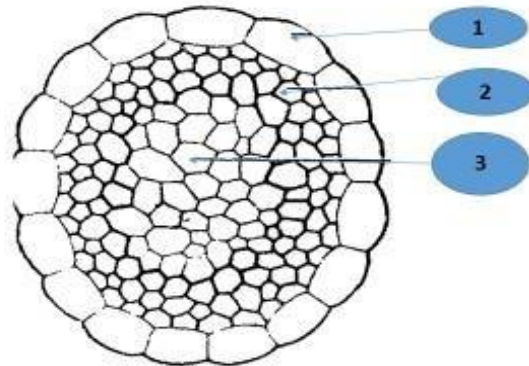


Q20 **A/** Identify these two figures **A** and **B**. To which **Division**, **class** and **subclass** they are belong?

B/ Labeling and write the differences between them.



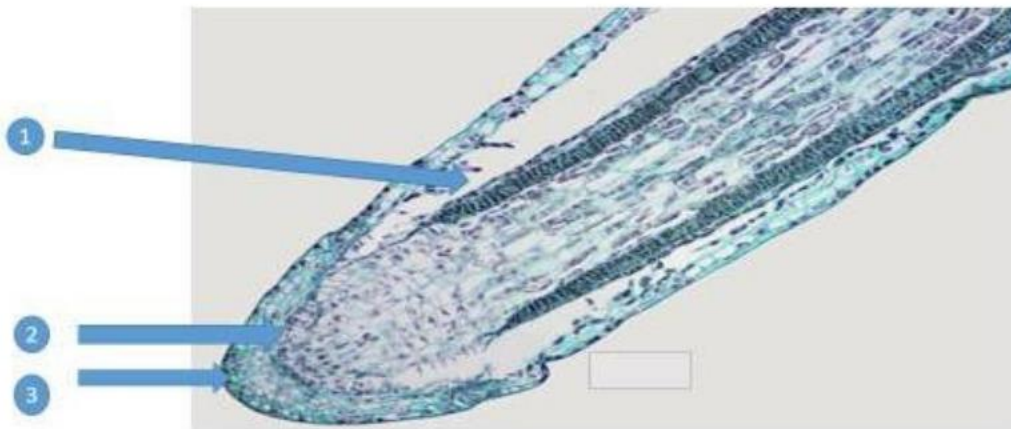
B



A

Archegoniate Question banks

- Q21** : A/ Identify this slide and mention the pointed part.
B/ Classify *Funaria* sp.



- Q22** : Choose suitable phrases to the following sentences:

- Certain cup- like shaped structure present along the midrib is known as:
a. Perichaetal leaf b. Medulla c. Gemma cup
- Sporophyte of *Sphagnum* sp. is elevated above the gametophytes by an elongation of stalk of gametophytic tissue called:
a. Columella b. Seta c. Pseudopodium
- A mature sporophyte in Eubrya shows:
a. Foot, seta and capsule b. foot and capsule c. seta and capsule
- The class that their gametophyte has two growth stages (the protonema and leafy stage) is :
a. Hepaticopsida b. Bryopsida c. Sphenophyta
- Are long, pointed at both ends and spirally thickened cells. There are hygrosopic in nature and help in dispersal of spores.
a. Sporophyll b. Elater c. Prothallus

Archegoniate Question banks

Q23: Draw and label the anatomy of axis of Mnium sp.

Q24: Classify the following species:

1. Anthoceros sp.
2. Sphagnum sp.
3. Marchantia sp.
4. Polytricum sp.
5. Equisetum sp.

Q25: Write some important of sphagnum sp.

Q26: Arial branches of Equisetum sp. are of two types what are they?

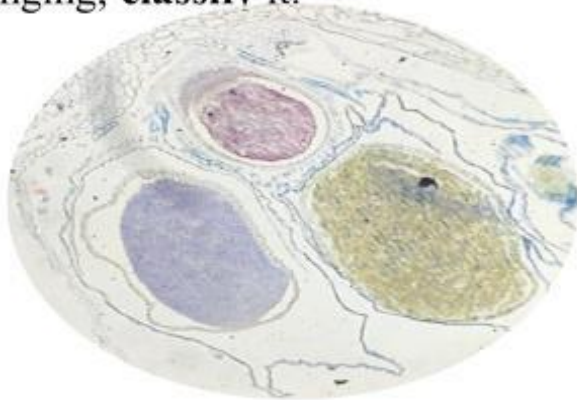
Q27: Write the common names of each of the following species.

1. Equisetum sp.
2. Sphagnum sp.
3. Marchantia sp.
4. Lycopodium sp.

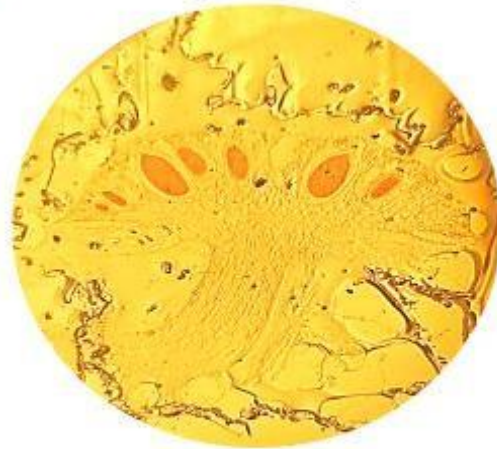
Q28: Define the following terms:

1. Archegonium
2. Sori
3. Prothallium
4. Sporocarp
5. Trabeculae

Q29 :A/ Identify these two slides **A** & **B** ; to which genus they are belonging; **classify** it.



A



B

B/ Certain cup-like structure present along the midrib in **this species** is known as.....these contain Which is thebodies.