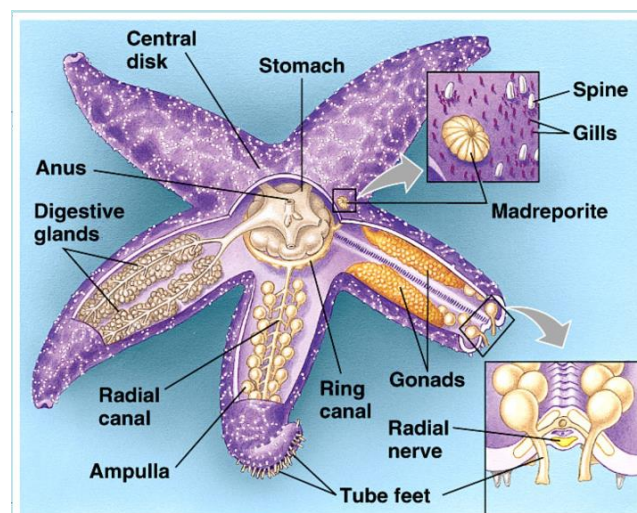


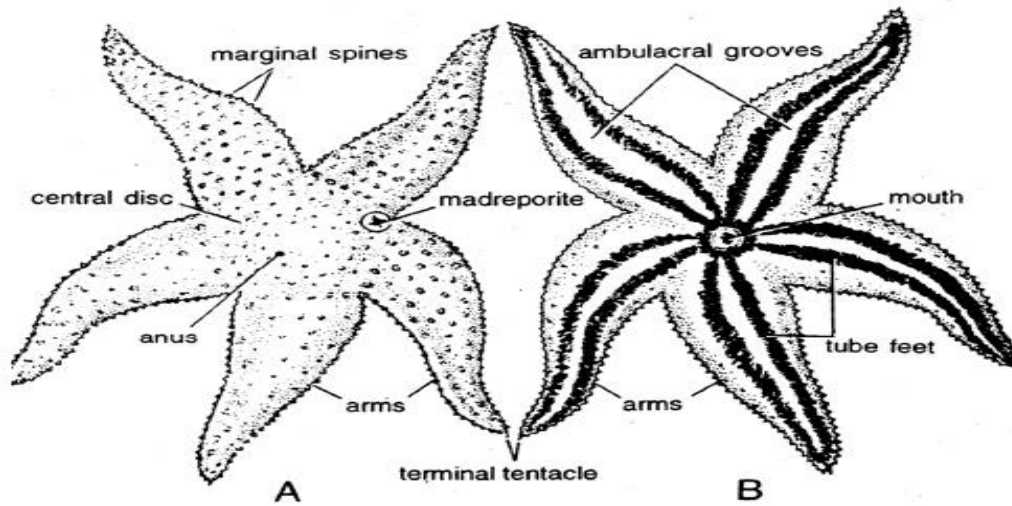


Phylum: Echinodermata (echinos= spiny+ derma=skin, ata=characterized).

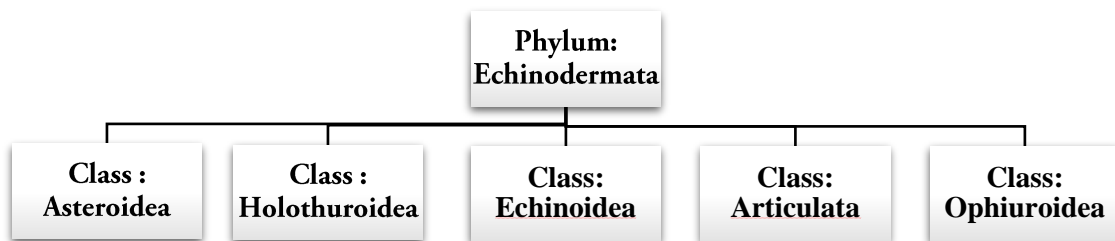
Characteristics of the phylum Echinodermata include:

1. Body triploblastic, coelomate, symmetrical, and unsegmented.
2. Body of Echinodermata star-like, spherical, globular, or elongated with radiating arms.
3. Body is generally pentameric, and have two faces oral and aboral, head is absent
4. Endoskeleton is made up of spines and calcareous spicules.
5. Water vascular system present.
6. Complete digestive system.
7. They have many small, movable extensions of the water-vascular system called tube feet which aid in movement, feeding, respiration and excretion.
8. Sexes are separate.



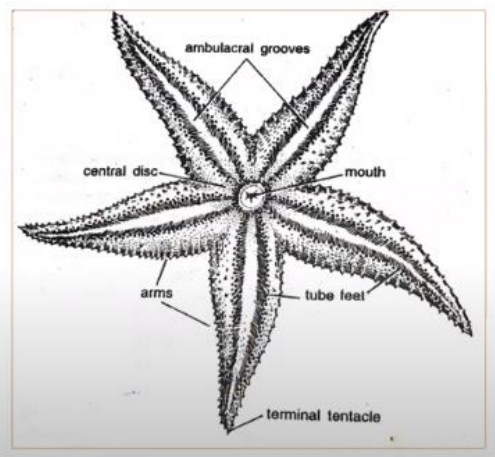
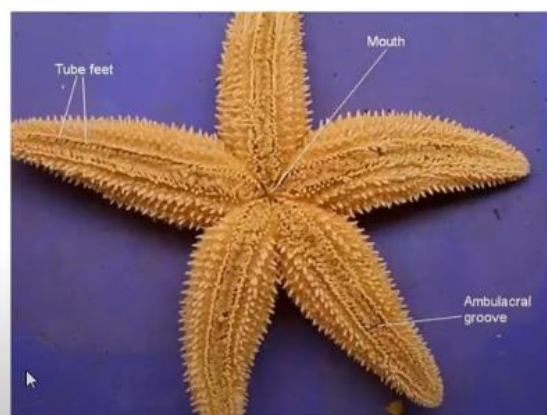


Asterias (A) aboral surface (B) oral surface



Class: Asterozoa

Asterias sp. (Sea star)



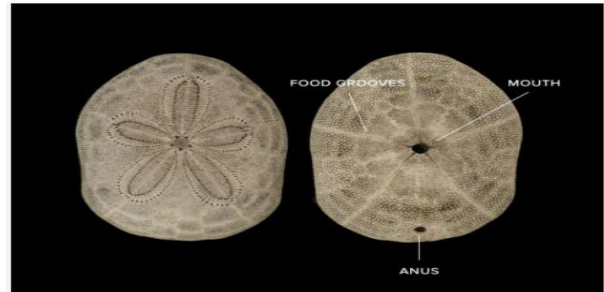
Class: Holothuroidea

***Cucumaria sp.* (Sea cucumber)**



Class: Echinoidea

(Sand dollars)



Class: Echinoidea

Arbacia sp.



Class: Articulata

***Antedon sp.* (feather stars)**



Class: Ophiuroidea

***Ophiura sp.* (Brittle stars)**

