

Questions Bank

Q1/ Define Golgi apparatus

Q2/ What are the functions of peroxisomes?

Q3/ What are the structures of mitochondria?

Q4/ What are the types of ribosome?

Q5/ What happen when the ventricle contract in frog?

Q6/ Define Cisternae, Lysosomes, Breathing , Vacuoles, Mitochondria

Q7/ Fill in the blanks with a suitable sentence of the followings:

1- Peroxides are broken down inside the peroxisome by
..... .

2- The ER membrane is continuous with the

3- Tadpoles breathe through on the outside of their bodies
for about

4- A motor protein called, which drives the bending
movements of a cilium or flagellum.

Q8/ Functions of Simple Cubical Epithelium?

Q9/ Blood is considered a connective tissue, Why?

Q10/ The main characteristics of smooth muscle cells?

Q11/ Functions of Areolar connective tissue?

Q12/ What occur in metaphase stage of cell division?

Q13/ Fill in the blanks with a suitable sentence of the followings:

1. The buccal respiratory system of the frog accounts for of the oxygen intake while Pulmonary respiration accounts for of total oxygen intake.
2. Pseudostratified epithelium found in..... and
3. Ligaments connect to while tendons connect to
4. There are two types of processes in nerve cell: that receive impulses and that transmit impulses.
5. Unlike other connective tissue, cartilage has no blood vessels or nerves except in the
6. The adult frog has three respiratory surfaces on its body , and

7. Adipocytes are.....

Q14/ How do animals help plants?

Q15/ What happen when the ventricle contract in frog?

Q16/ What are the properties of Fish?

Q17/ What are the functions of Golgi apparatus?

Q18/ What are the functions of Peroxisomes?

Q19/ What are the functions of Rough endoplasmic reticulum?

Q20/ What occur in Anaphase stage of cell division?

Q21/ What are the main differences between Prokaryotic and Eukaryotic cells?

Q22/What are the functions of simple squamous epithelium?

Q23/ Define Centrioles, Cytology, Compound Light Microscope

Q24/ Fill in the blanks with a suitable sentence of the followings: -

1- A plant cell contains structures not found in an animal cell such as and

2- Cell division is

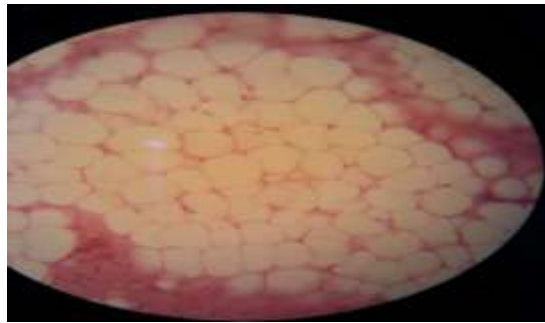
3- Simple columnar Epithelium found in
and.....

4- is the distribution and package department for the
cell's chemical products.

Q25/ Define meiosis, Tissue, Collagen Fibers

Q26/ What is the name of this tissue?

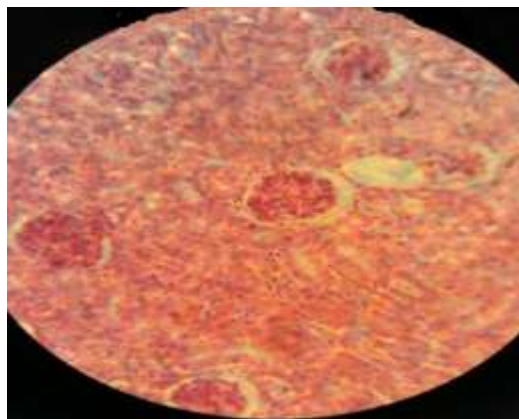
Q28/ Give its Function



Q29/ What are the types of connective tissue?

Q30/ what is the name of this tissue?

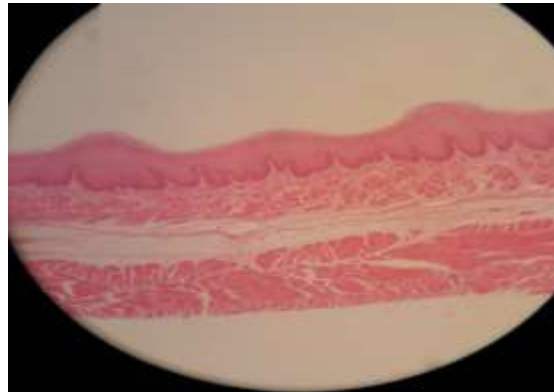
Q31/ Give its function



Q32/ What occur in metaphase stage of cell division?

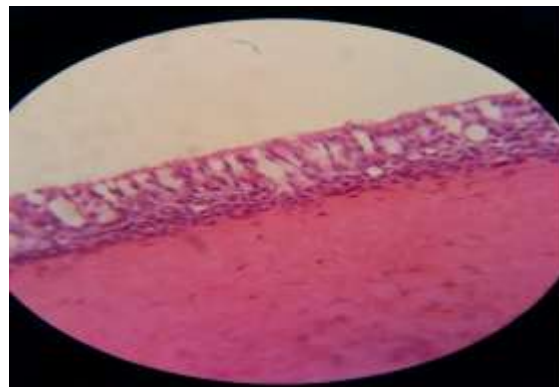
Q33/ what is the name of this tissue?

Q34/ Give its location



Q35/ What is the name of this tissue?

Q36/ Give its location



Q37/ Fill in the blanks with a suitable sentence of the followings: -

1- Unlike other connective tissue, cartilage has no blood vessels or nerves except in the

2- Ligaments connect to while tendons connect to

3- The strength of cartilage is due to and the resilience is due to the presence of

Q38/ Define epithelial tissue and Meiosis

Q39/ Enumerate the types of habitats, explain two types of it?

Q40/ What are the cell theory principles?