

Mixed Use Building Commercial + Residential

Second semester design studio

Polla Dilshad Ibrahim
MSc Sustainable Architecture

- Point Block
- Gallery (single load corridor)
- Double load corridor

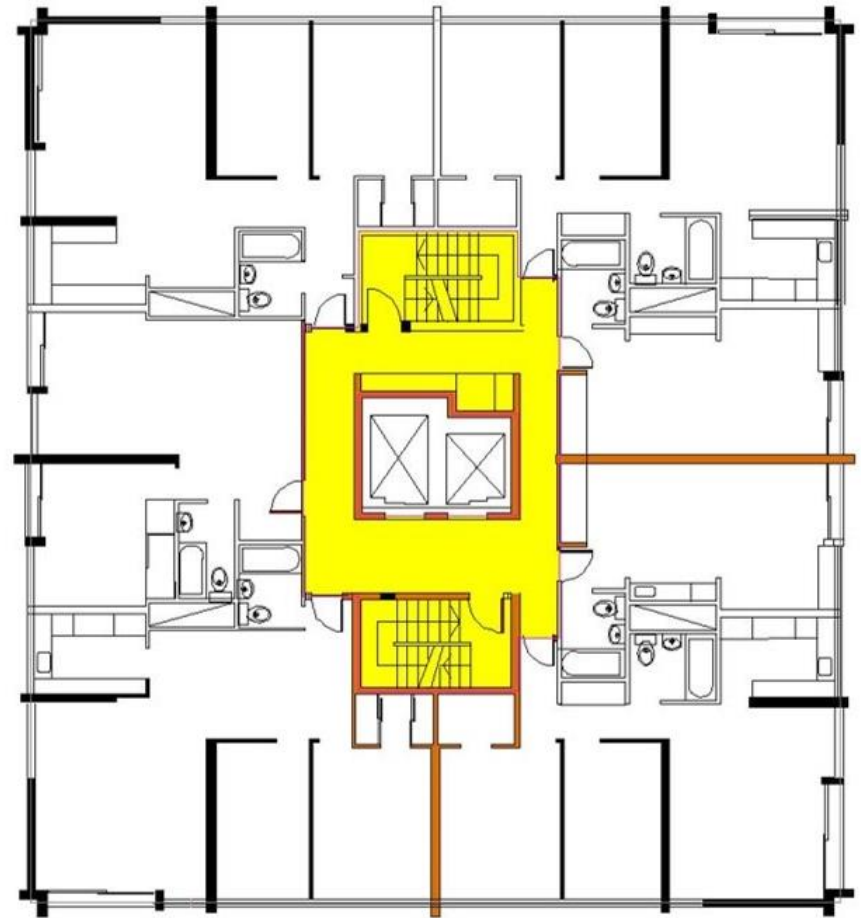
Multistory Housing (methods of access)

- Point Block

Central lobbies for tower blocks

In the “tower block”, flats are positioned around a central lift lobby.

High rise

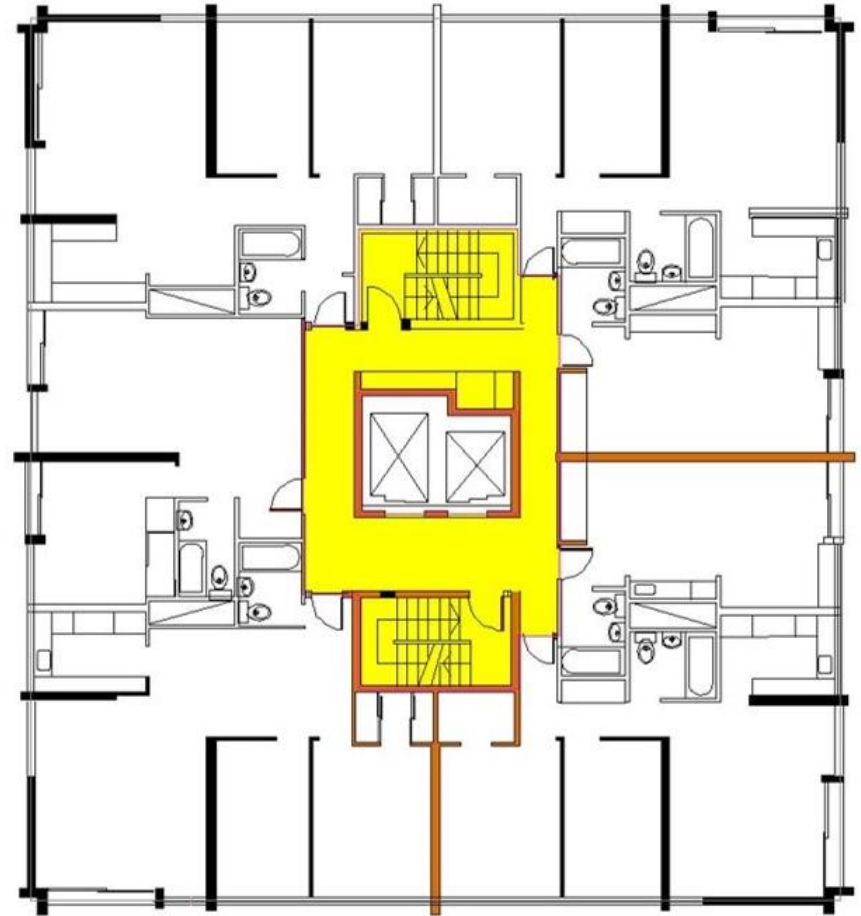


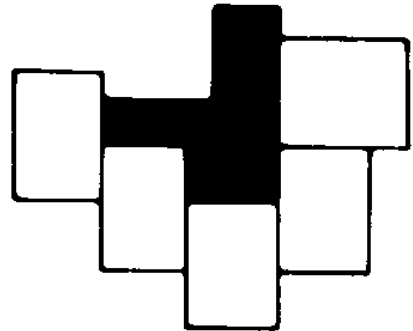
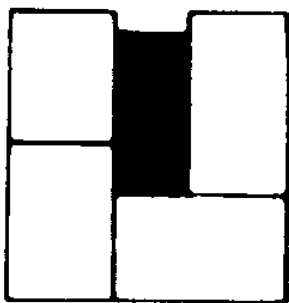
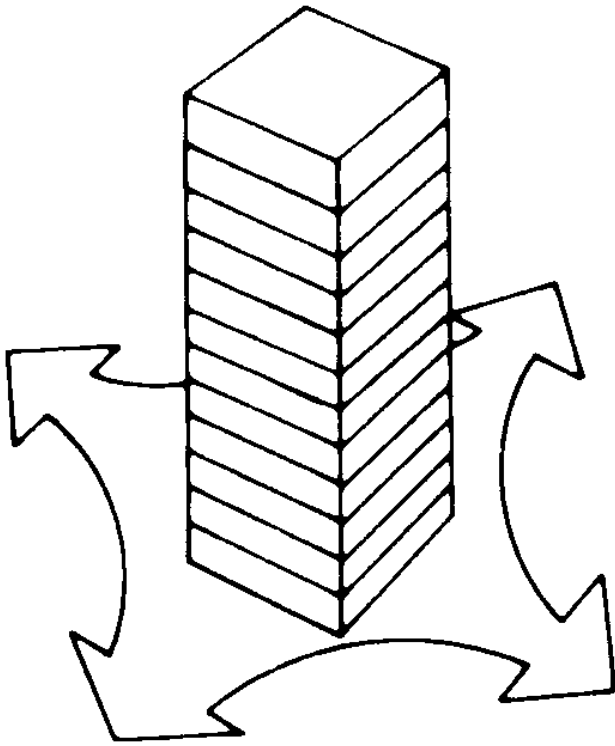
Multistory Housing (methods of access)

- Point Block

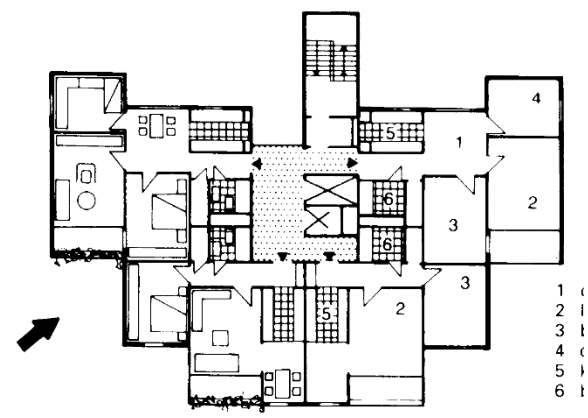
In this set up, there is a minimum of corridor space, but on the other hand the number of units that can be served by the single lift lobby is limited (usually 4). Also, there may be problems related to natural light & Ventilation for corridors.

In this example: circulation takes up 11.9% of the floor area.

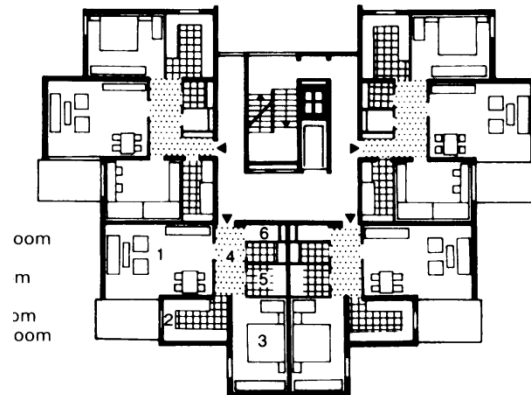
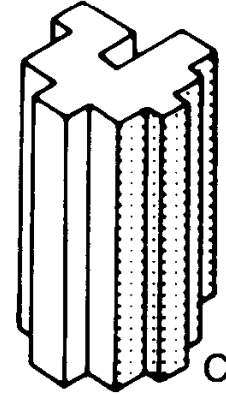
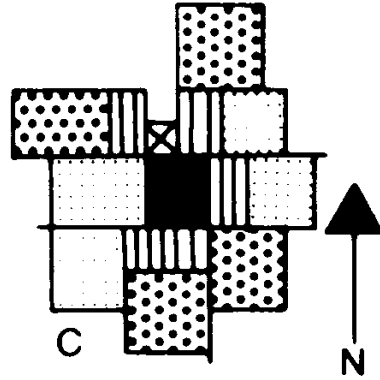
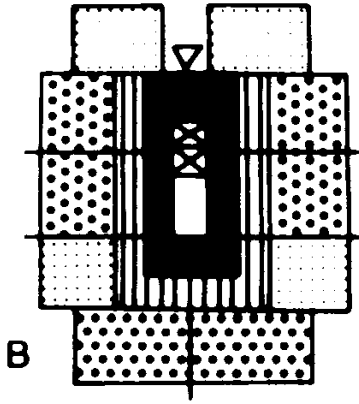
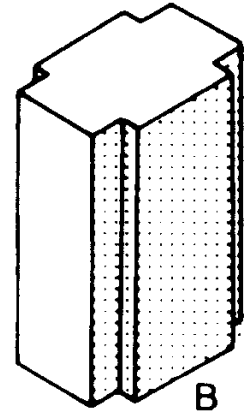
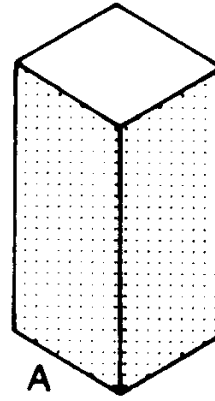
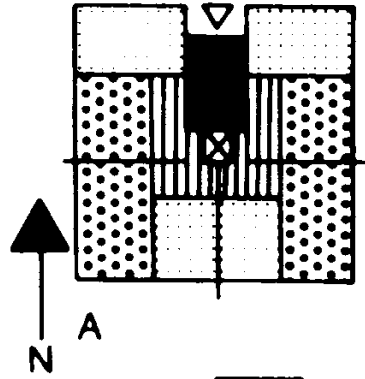
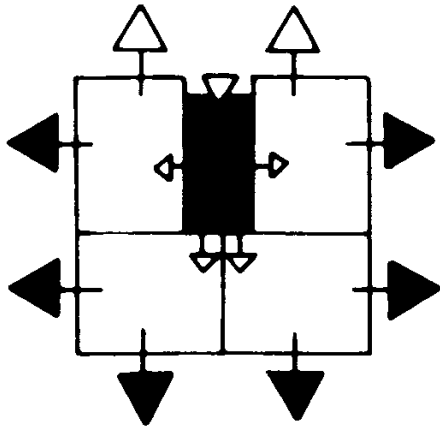


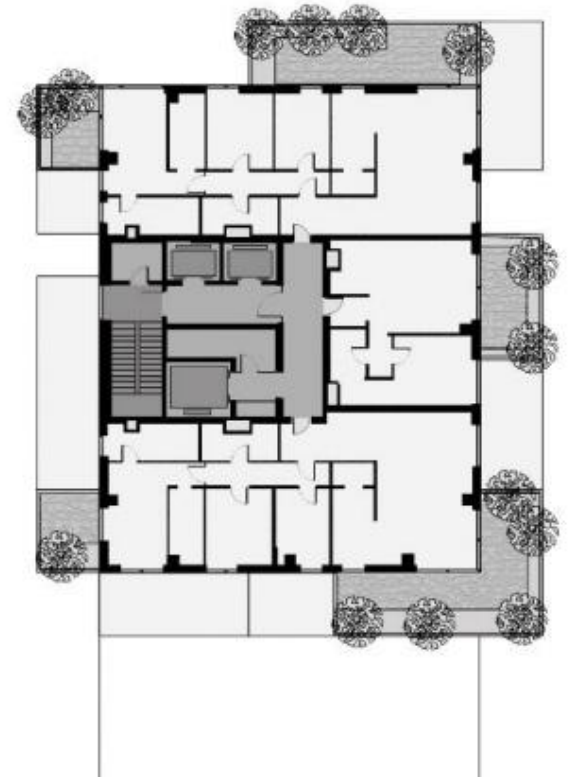


central access

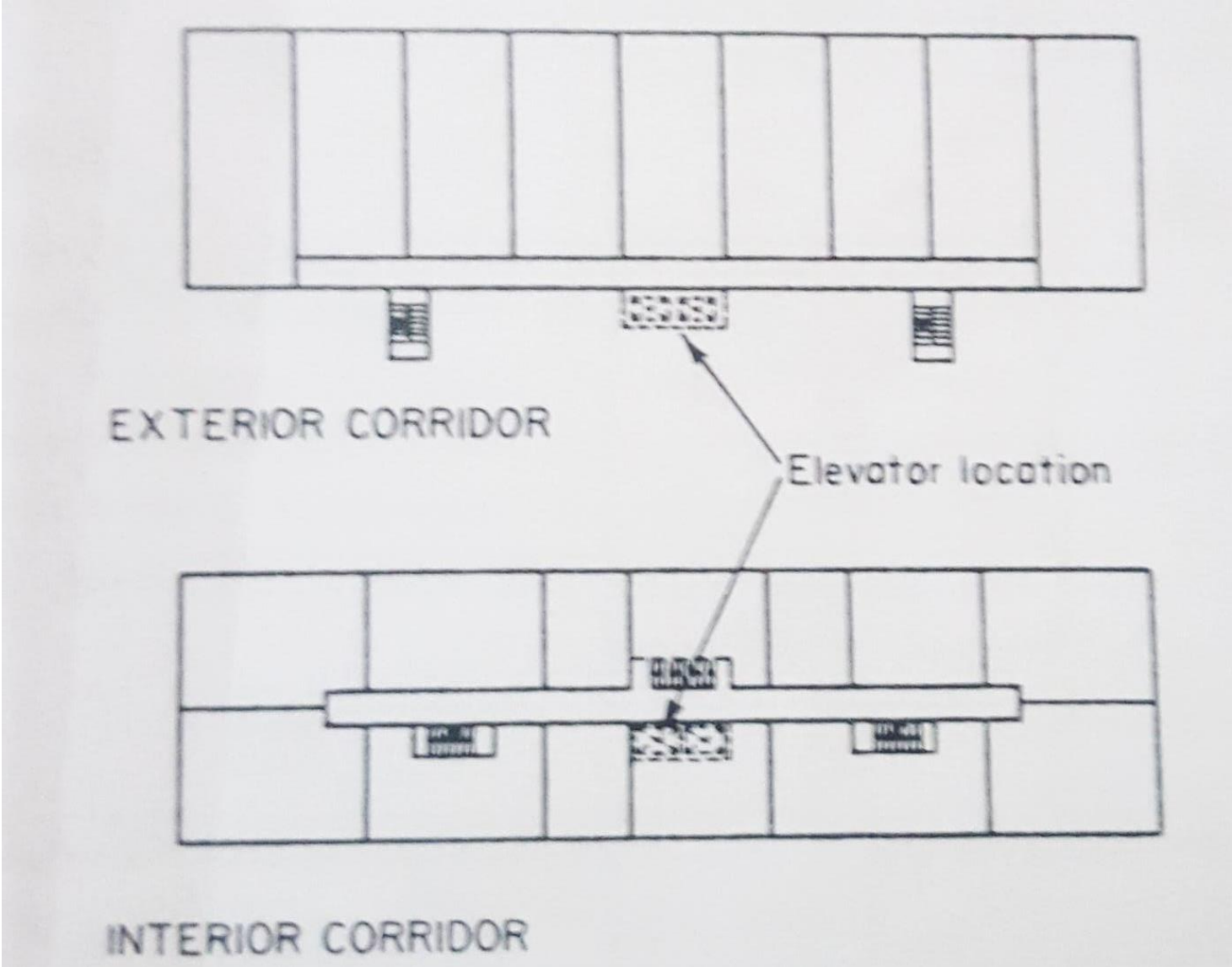


- 1 c
- 2 l
- 3 h
- 4 c
- 5 l
- 6 l

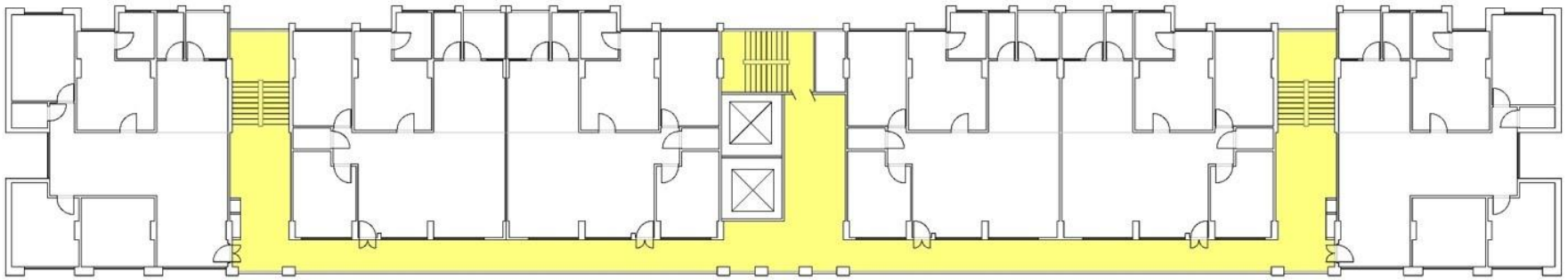




(Single load) & (Double load)



- Gallery (single load)



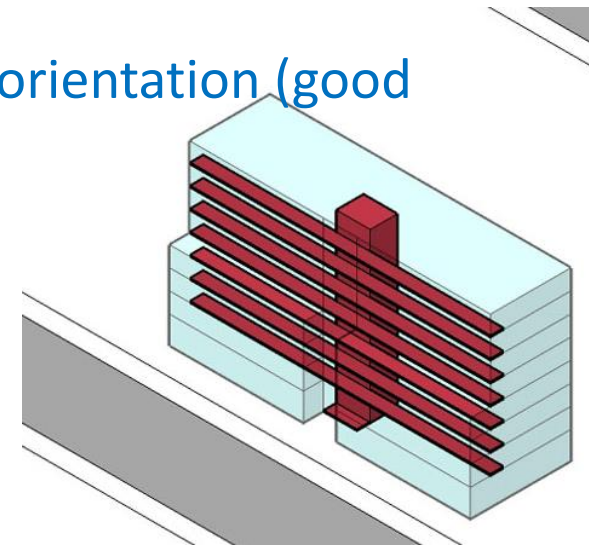
Circulation here takes up a considerable 18.8% of the total floor area. (not very efficient) .

Good Ventilation & lighting for corridors.

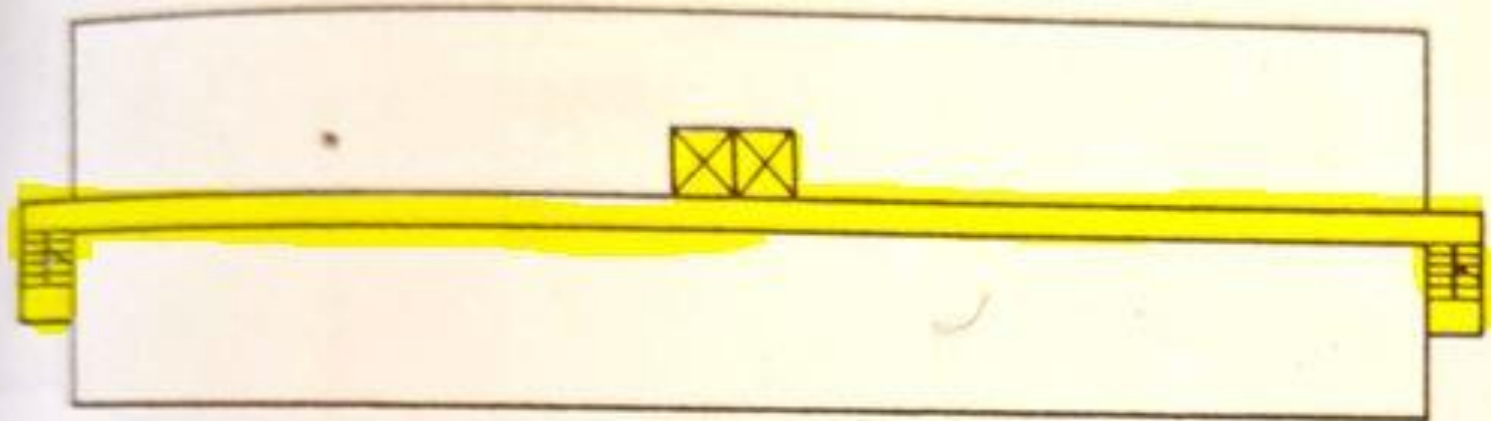
All apartments (flats) may be positioned to South orientation (good orientation)

Fire escape at ends.

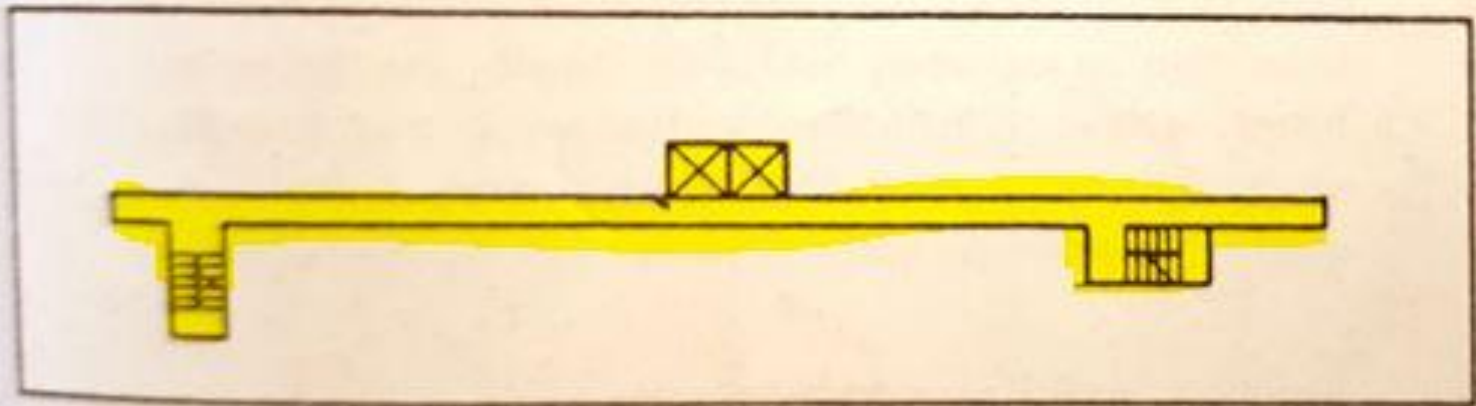
Views....



- (Double load)

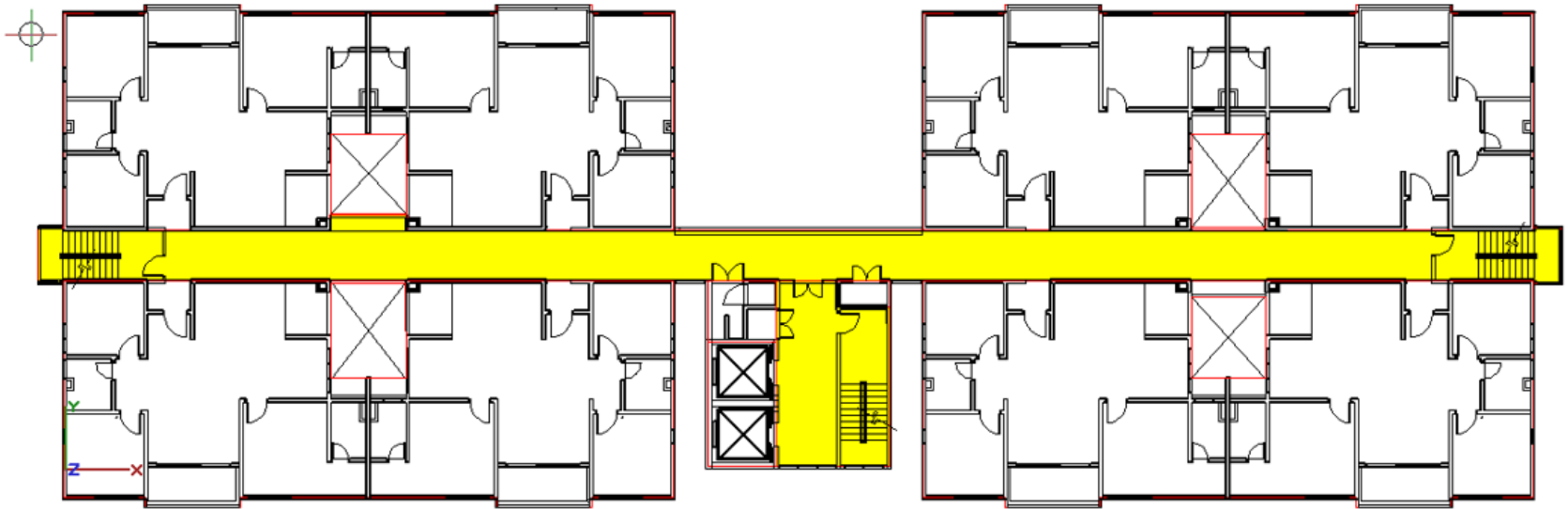


(a) Spaced stairs at exterior



(b) Spaced interior stairs

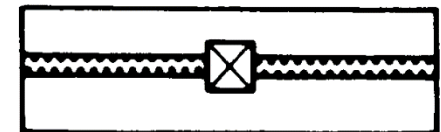
- (Double load)



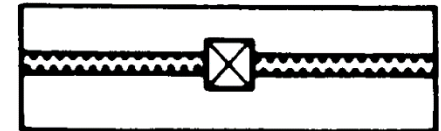
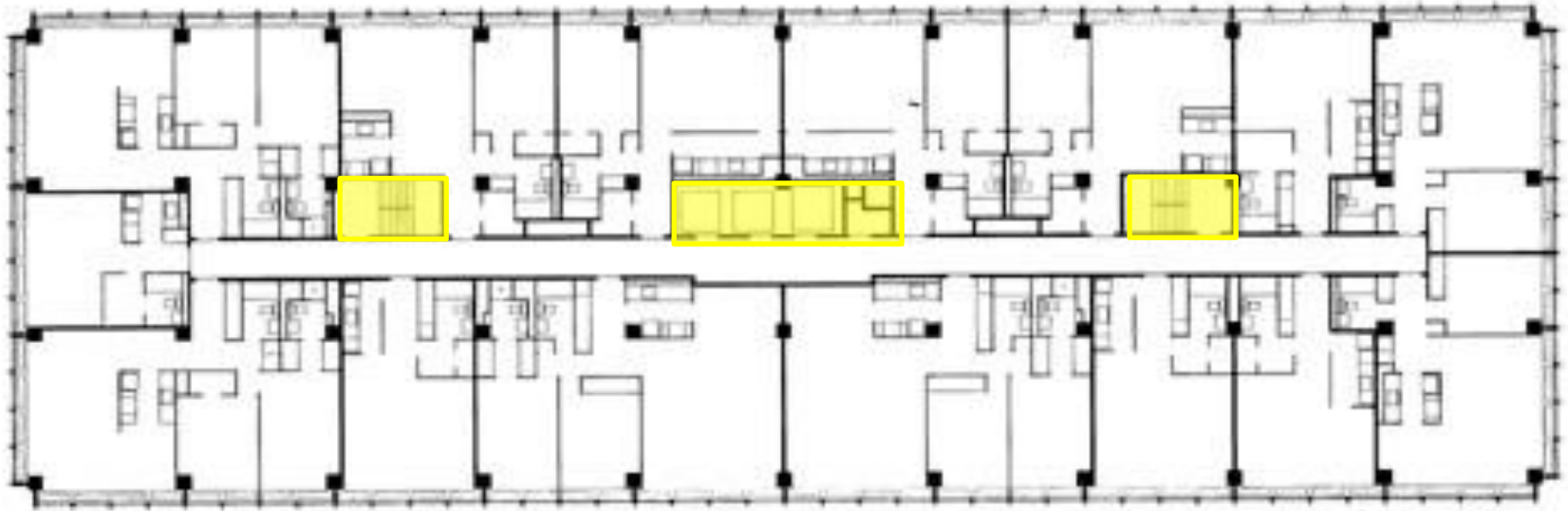
Here circulation makes up 16.03% of the total floor area.

Apartment Orientation (if one is south, the opposite is north!)

More flats than point block.



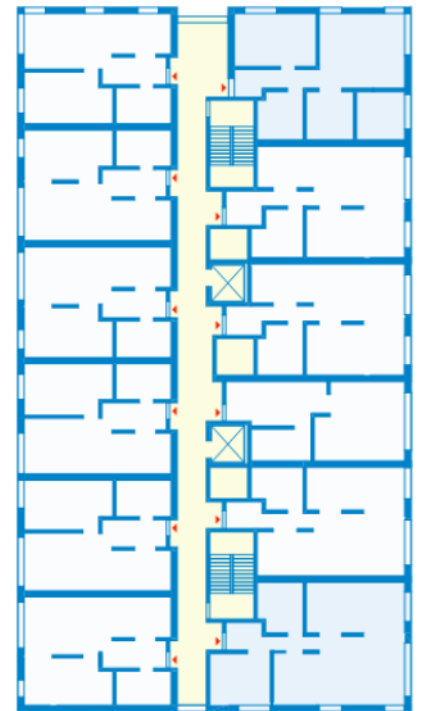
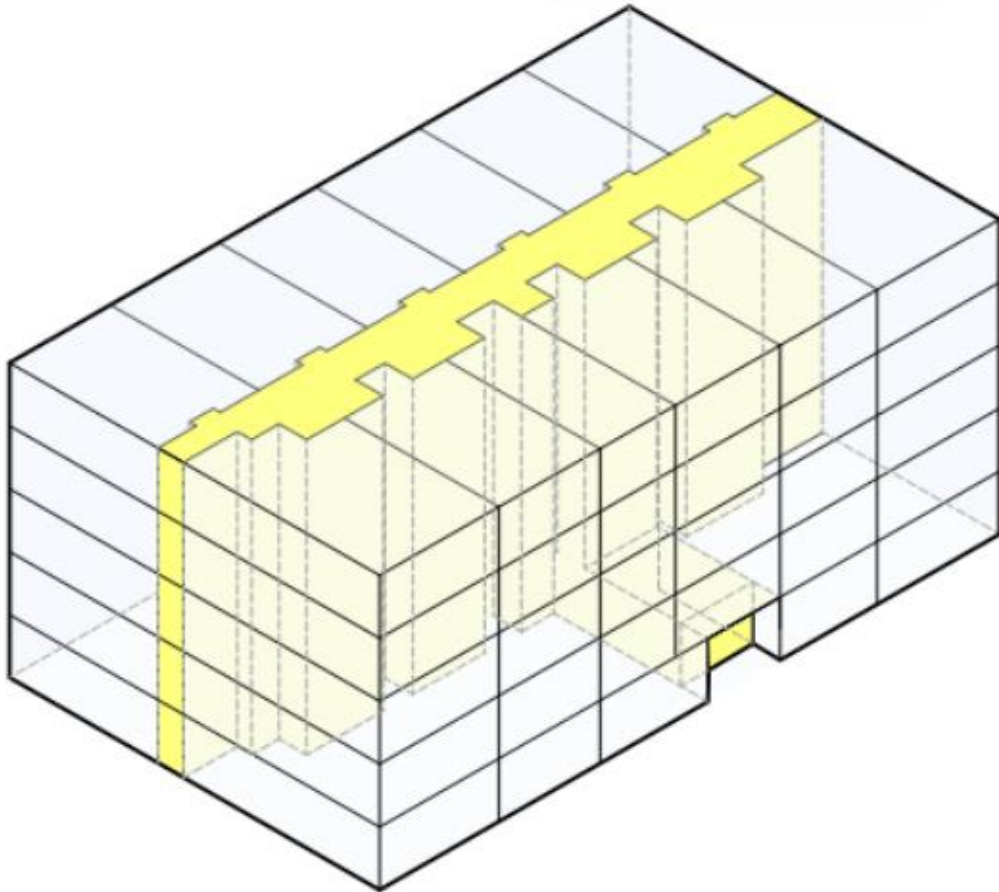
- (Double load)



Apartment Orientation (if one is south, the opposite is north!)

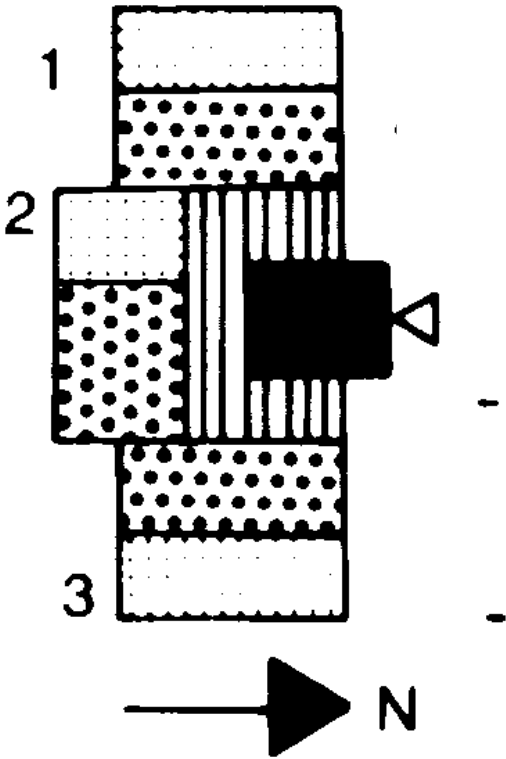
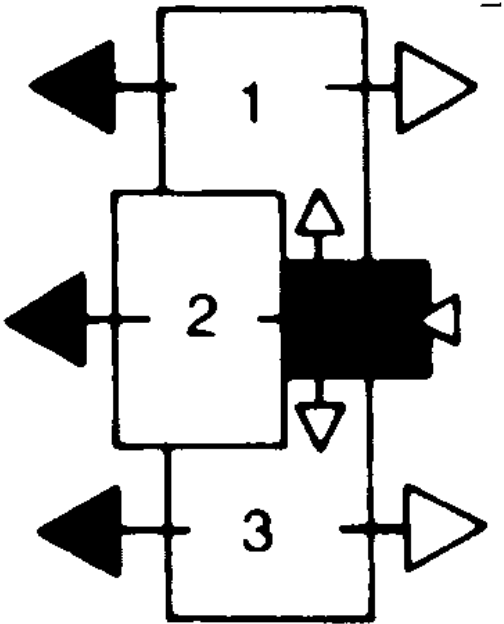
More flats than point block.

Rectangular Snip



Segment

Usually low rise (staircase access)



Other arrangement or mixing between those are possible too!

Mixed Use Building Commercial + Residential

Second semester design studio

Polla Dilshad Ibrahim
MSc Sustainable Architecture