

Expected Questions for Both Courses

• Select The Correct Answer from The Following

1. Each of the following statements concerning *Ascaris lumbricoides* is **correct except**:
 - a. *Ascaris lumbricoides* is one of the largest nematode
 - b. *Ascaris lumbricoides* can cause pneumonia
 - c. Both dogs and cats are intermediate hosts of *Ascaris lumbricoides*
 - d. *A. lumbricoides* is transmitted by ingestion of eggs
2. Each of the following statements concerning kala-azar is **correct except**:
 - a. Kala-azar is caused by *Leishmania donovani*
 - b. kala-azar is transmitted by the bite of sandflies
 - c. Kala-azar occurs primarily in rural Latin America
 - d. Kala-azar can be diagnosed by finding amastigotes in bone marrow
3. Each of the following statements concerning hookworm infection is **correct except**:
 - a. Hookworm infection can cause pneumonia
 - b. Hookworm infection is acquired by humans when filariform larvae penetrate the skin
 - c. Hookworm infection is caused by *Necator americanus*
 - d. Hookworm infection can be diagnosed by finding the trophozoite in the stool
4. Each of the following statements concerning *Trichomonas vaginalis* is **correct except**:
 - a. *T. vaginalis* is transmitted sexually
 - b. *T. vaginalis* can be diagnosed by visualizing the trophozoite
 - c. *T. vaginalis* can be treated effectively with metronidazole
 - d. *T. vaginalis* causes bloody diarrhea
5. Each of the following statements concerning *Giardia lamblia* is **correct except**:
 - a. *G. lamblia* has both a trophozoite and cyst stage in its life cycle
 - b. *G. lamblia* is transmitted by the fecal-oral route from both human and

animal sources

c. *G. lamblia* causes hemolytic anemia

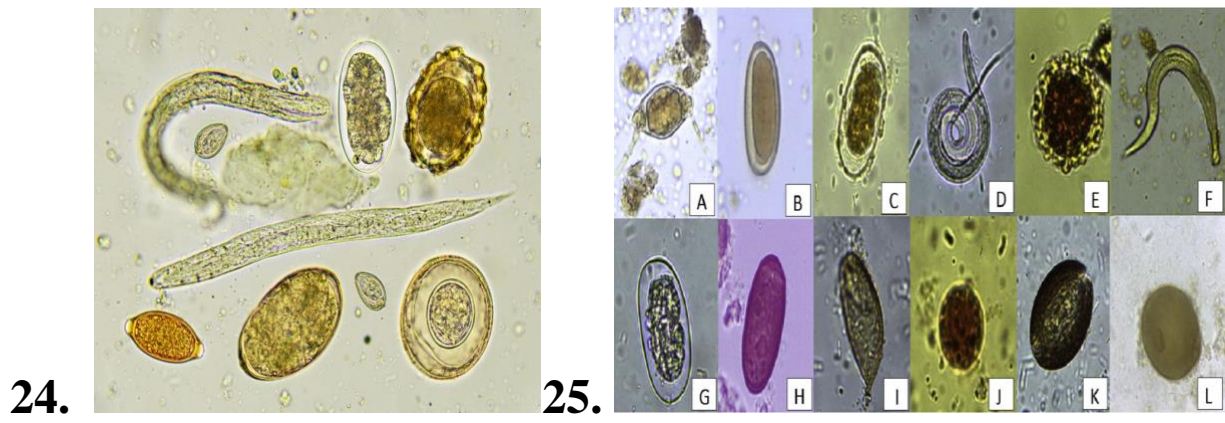
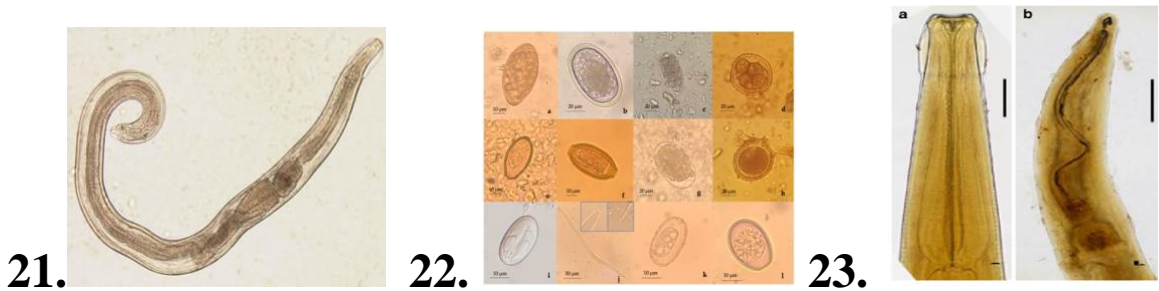
d. *G. lamblia* can be diagnosed by the string test

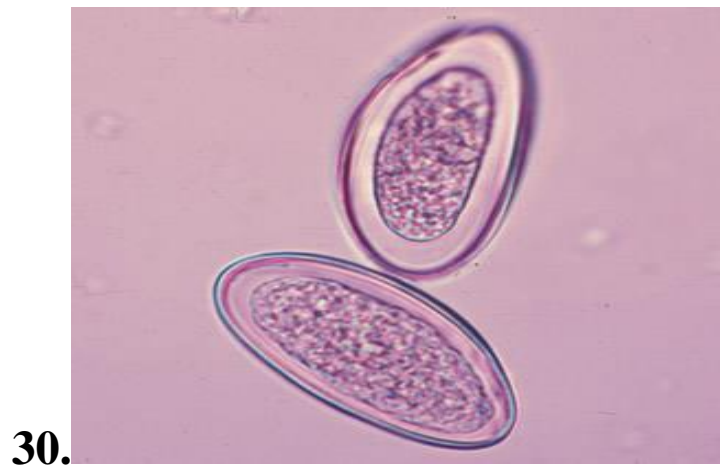
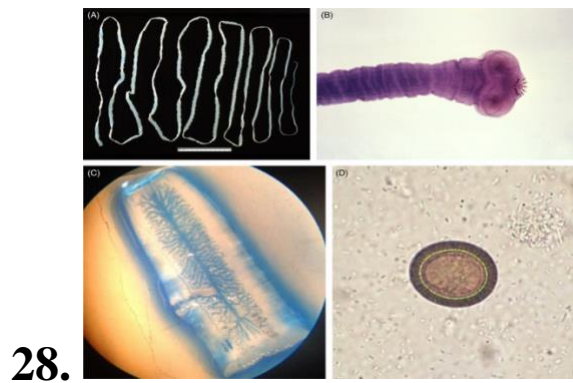
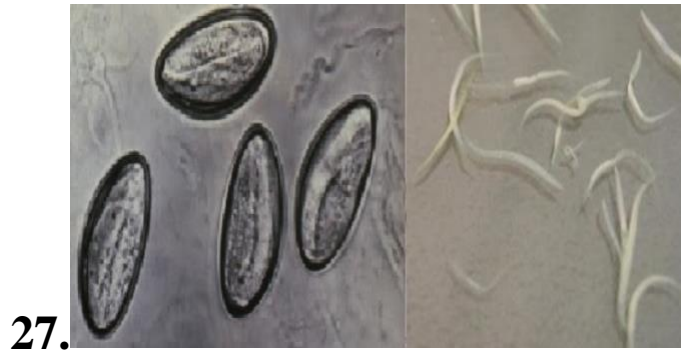
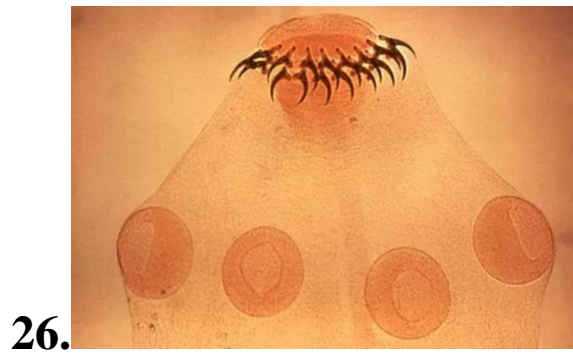
6. Each of the following statements concerning malaria is **correct except**
- a. The female anopheles mosquito is the vector
 - b. Early infection, sporozoites enter hepatocytes
 - c. Release of merozoites from red blood cells causes fever and chills
 - d. The principal site of gametocyte formation is the human gastrointestinal tract.
7. Each of the following parasite is transmitted by mosquitoes except:
- a. *Leishmania donovani*
 - b. *Wuchereria bancrofti*
 - c. *Plasmodium vivax*
 - d. *Plasmodium falciparum*
8. Pigs or dogs are the sources of human infection by each of the following parasites except:
- a. *Echinococcus granulosus*
 - b. *Taenia solium*
 - c. *Ascaris lumbricoides*
 - d. *Trichinella spiralis*
9. In malaria, the form of plasmodia that is transmitted from mosquito to human is the
- a. Sporozoite
 - b. Gametocyte
 - c. Merozoite
 - d. Hypnozoite
10. Which of the following agent is used to prevent Malaria
- a. Mebendazole
 - b. Chloroquine
 - c. Inactivated vaccine
 - d. Zinc table

● **Answer with True or False**

11. *Entamoeba histolytica* infections are usually fatal.
12. Chagas' disease is another name for African sleeping sickness.
13. Xenodiagnosis is sometimes used to demonstrate *Trypanosoma cruzi* infection.
14. Leishmaniasis often results in immune dysfunction.
15. Humans cannot contract giardiasis from their pets.
16. *Trichomonas vaginalis* can be transmitted by sexual contact or by direct contact involving fomites.
17. The only effective treatment for *Cryptosporidium* infections is oral rehydration therapy.
18. "Blackwater fever" results from complications associated with *Toxoplasma* infections.
19. Trematodes are helminthic worms that are composed of many proglottids.
20. Identification of *Schistosoma* species involves the morphology of the parasites' eggs.

● **Identify the slides**





• **Classify the Following Parasites and the diseases they cause**

31. *Sschistosome japonicum*

32. *Fasciola hepatica*

33. *Clonorchis sinensiss*

34. *paragonimus westermani*

35. *Schistosoma. hematobium*
36. *Ascaris lumbricoides*
37. *Trichuris trichura*
38. *Ancylostoma duodenale*
39. *Necator americanus*
40. *E. vermicularis*

● **Fill the black with correct answers**

41. The larger male has a ventral gynecophoric canal extending the entire length of the body from the ventral sucker in which the slender female is held during copulation in_____.
42. (Dog or cat tape worm) is a common name of _____
43. According to the presence or absence of sensory caudal chemo-receptor, nematodes are divided into sub classes _____.
44. The length of mature proglottids is larger than width and they have a double set of both male and female reproductive organs in_____
45. The oral sucker is larger than the ventral sucker in_____
46. *T. spiralis* causes _____ disease.
47. The larval stage of *Echinococcus granulosus* Called _____
48. From the inner wall of these capsules the scolex the free brood capsules and the free scolex collectively referred to as _____
49. The ova have terminal spine and its present in bladder and less frequently in intestine (in urine more than feces) in _____
50. Seat worm is the common name of_____
51. The intermediate host of Hook worm is_____
52. Man can get intestinal schistosomiasis infection though _____
53. Class _____is an example of free-living parasites.
54. The life cycle is direct in_____
55. The female of *E. vermicularis* could be recognized form male by presence of _____
56. *paragonimus westermani* is diagnosing by taking the _____ sample.
57. The oral sucker is larger the ventral sucker in _____.