



University of Sallahadin
College of Engineering
Electrical Engineering Dept.



Electrical CAD

Lecture Seven

Blocks

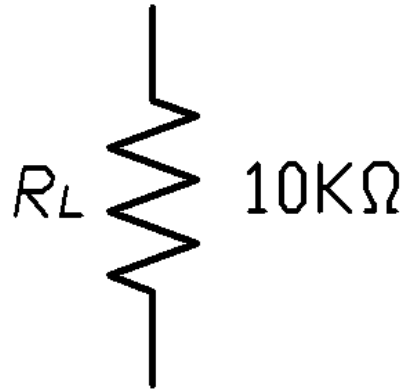
By :
Sarkar Jawhar
MSc in Electrical Engineering

Contents of This Lecture

- Definition.
- Create Block.
- Insert Block.
- Edit Block.
- Block Control.
- Electronic Circuit Drawings.

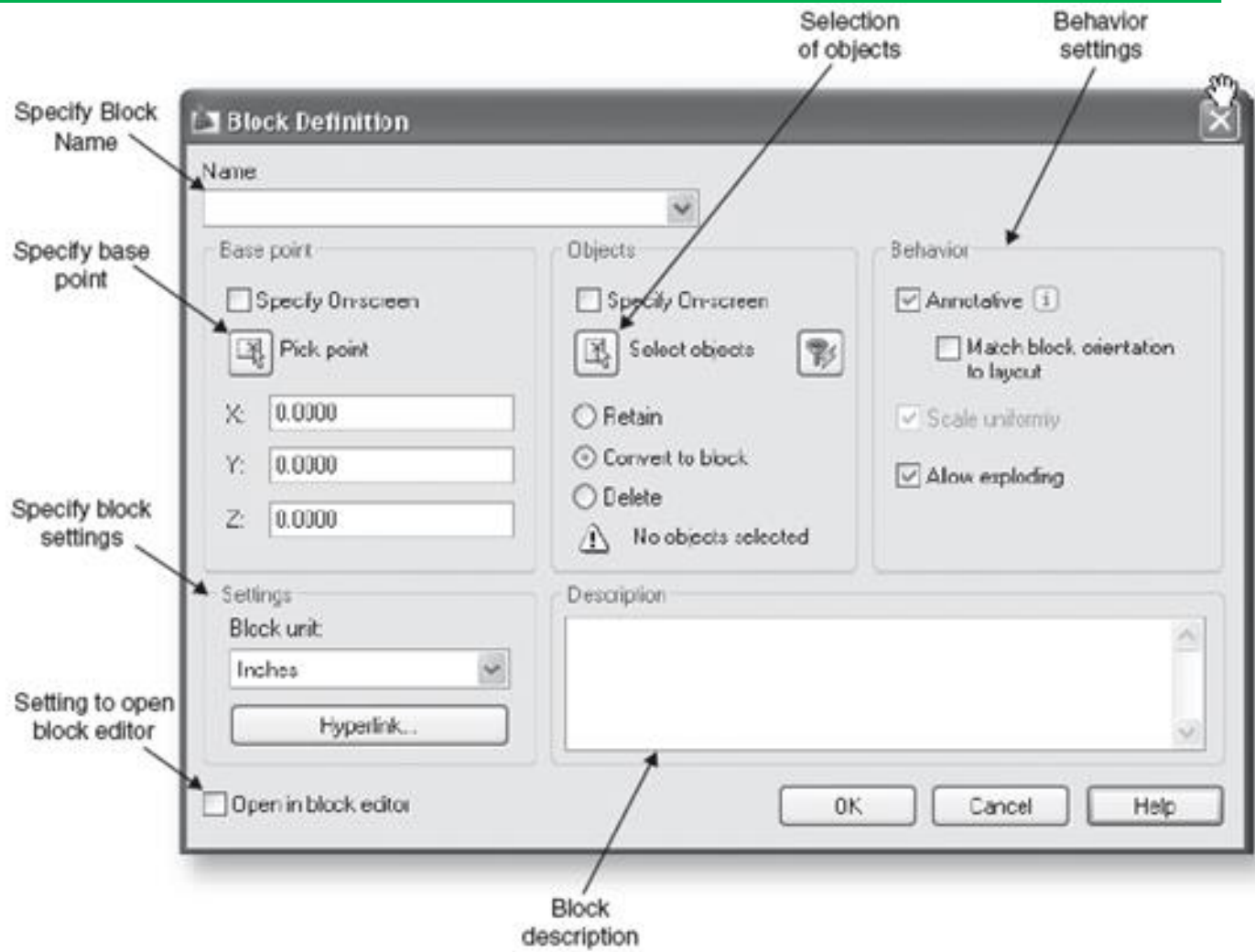
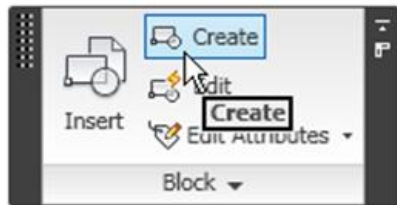
Definition

- Block is combined objects and elements which it needs to be used several times.



Create Block

- Creating a Block:
Type Block
or **Click Create Block**

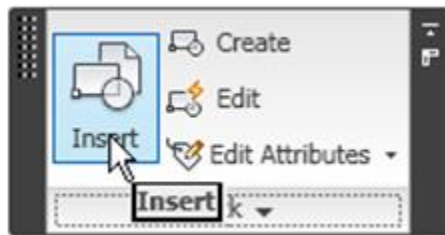


not valid block

DIRECT, LIGHT, AVE_RENDER, RM_SDB, SH_SPOT, OVERHEAD

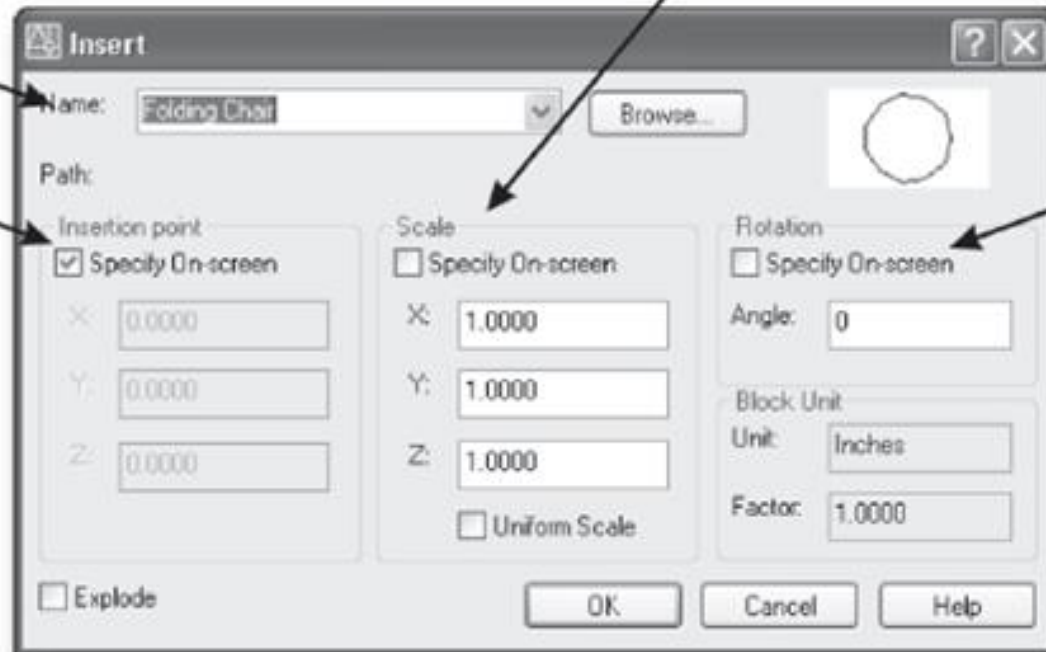
Insert Block

- Inserting a Block: **Type Insert** or **Click Insert Block**



Selection of Block to insert

Specify Insertion point

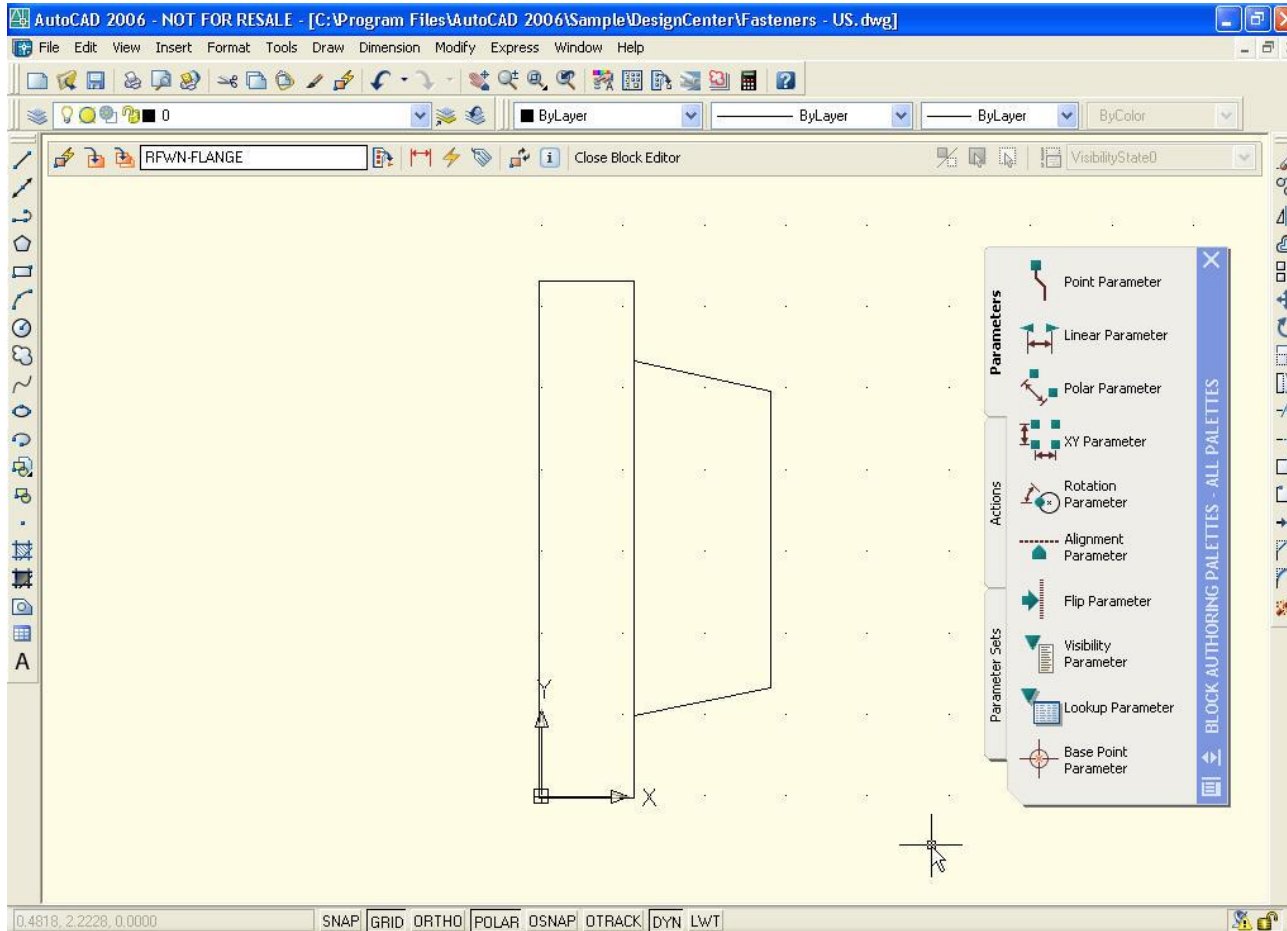


Specify Scale factor

Specify Rotation angle

Edit Block

- Editing a Block: Click **Edit Block**



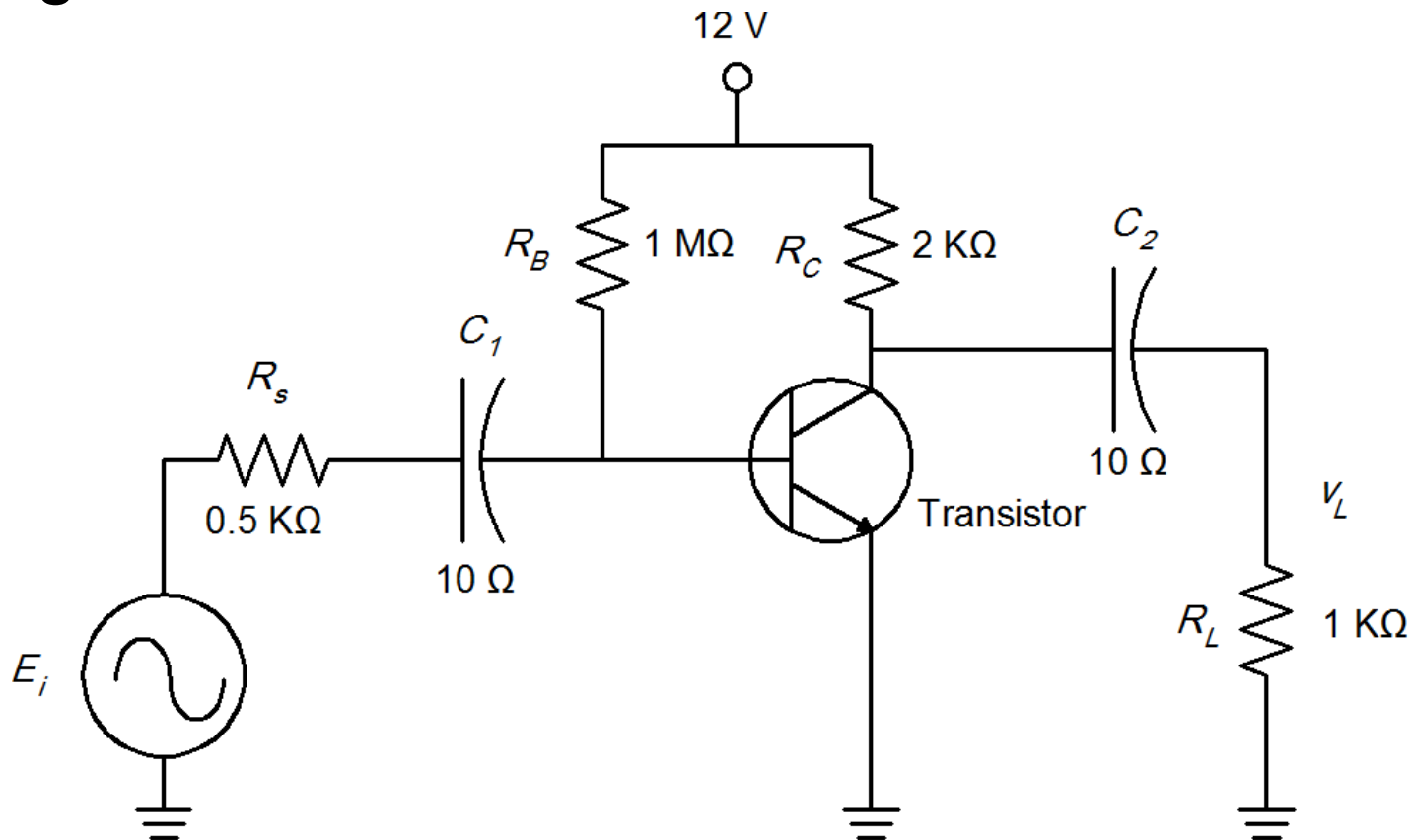
Block Control

- **Control the Color and Linetype of Blocks**

If you want objects in a block to	Create objects on these layers	Create objects with these properties
Retain original properties	Any but 0 (zero)	Any but BYBLOCK or BYLAYER
Inherit properties from the current layer	0 (zero)	BYLAYER
Inherit individual properties first, then layer properties	Any	BYBLOCK

Assignment

- Draw the following electronic circuit diagram using AutoCAD and Blocks.



Questions and Thank you

*Thank
you*