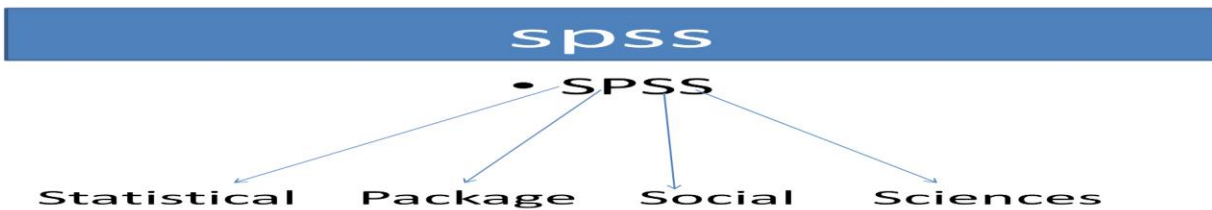


**SPSS**:: is a Windows based program that can be used to perform data entry and analysis and to create tables and graphs. SPSS is capable of handling large amounts of data and can perform all of the analyses covered in the text and much more. SPSS is commonly used in the Social Sciences and in the business world, so familiarity with this program should serve you well in the future. SPSS is updated often.

زۆربەى زانستەكان وەك پزىشكى و ئابوورى و زانستە پەروەردىيەكان و كۆمەلايەتتەكان ھەلدەستەن بە بەكارھىنانى شىكردنەوہ ئامارىيەكان(التحليلات الاحصائية) بۆ داتاكانيان بە مەبەستى دۆزىنەوہى پيۆمەركانى رووہو چەق ( ناوئندە ژميرە و ناوئراست ..... ) وە پيۆمەركانى پەرش و بلاوى و دۆزىنەوہى پەيوەندى نيوان گۆراوہكان .... ھتد ھەلستان بە دۆزىنەوہى ئەم پيۆمەرانەى بە ريگاي دەستى ئاسان نيە بە تايبەت ئەگەر ھاتوو داتاي گەورەمان ھەبوو . لەگەل پيشوہچوونى تەكنەلوجيا و ئاميرى كومپيوتەر زور بئەرنامە داھينرا يەككەك لئوانە برىتى يە لە بئەرنامەى ( SPSS ) باكيچى ئامارى بۆ زانستە كۆمەلايەتتەكان.



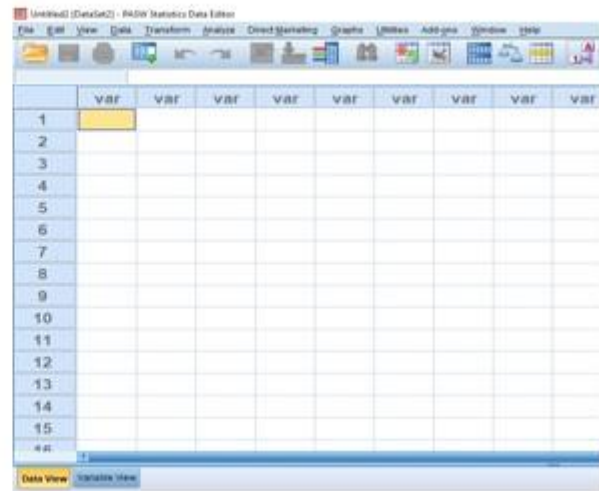
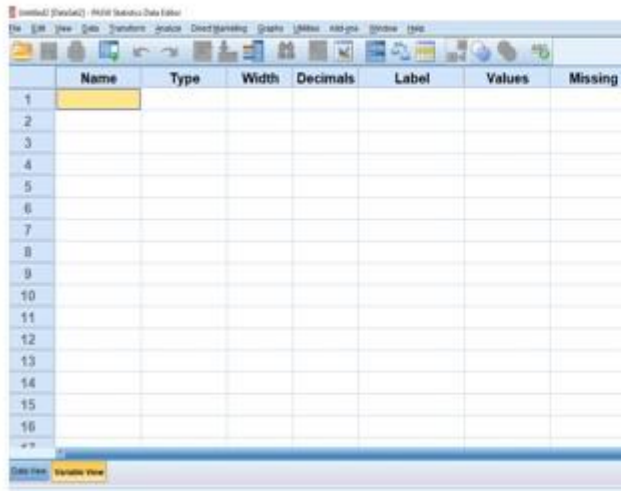
★ دوو شاشەى سەرەكىمان ھەيە لە بەرنامەى ( SPSS ) كە برىتى يە لە مانەى خوارەوہ :

- There are two different windows in SPSS
- 1<sup>st</sup> – Data Editor Window - shows data in two forms
  - Data view
  - Variable view
- 2<sup>nd</sup> – Output viewer Window – shows results of data analysis

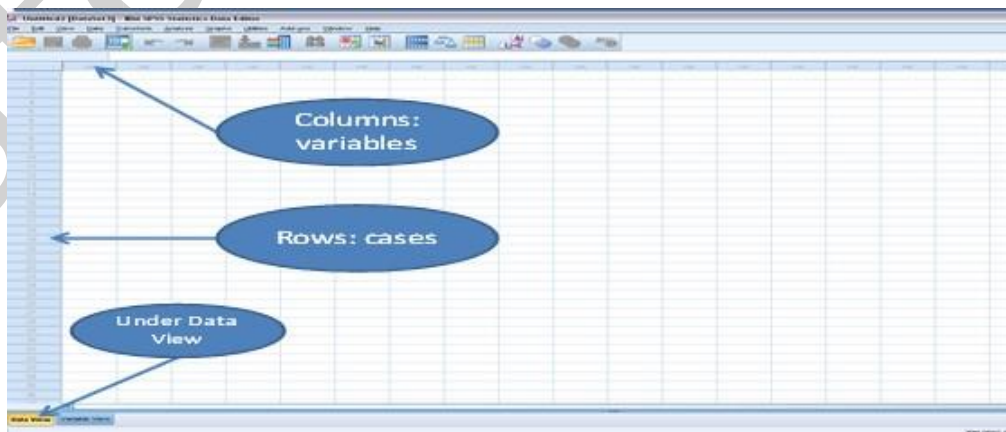
★ شاشەى يەكەم Data view vs. Variable view : ئەو شاشەيە كە داتا ئامارىيەكان لە خۆ دەگريت بە مەبەستى تحليل كردنى ليرەدا گۆراوہكان(VARIABLE) و داتاكان(DATA) داخەل دەكەين ھەريەكەو لە شوپنى خۆى.



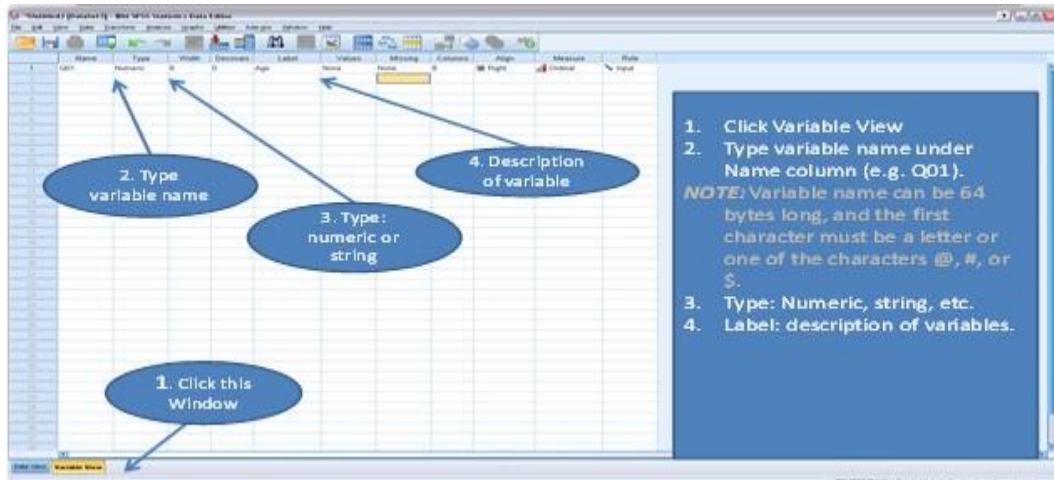
- Data view
  - Rows are cases
  - Columns are variables
  
- Variable view
  - Rows define the variables
    - Name, Type, Width, Decimals, Label, Missing, etc.
      - Scale – age, weight, income
      - Nominal – categories that cannot be ranked (ID number)
      - Ordinal – categories that can be ranked (level of satisfaction)



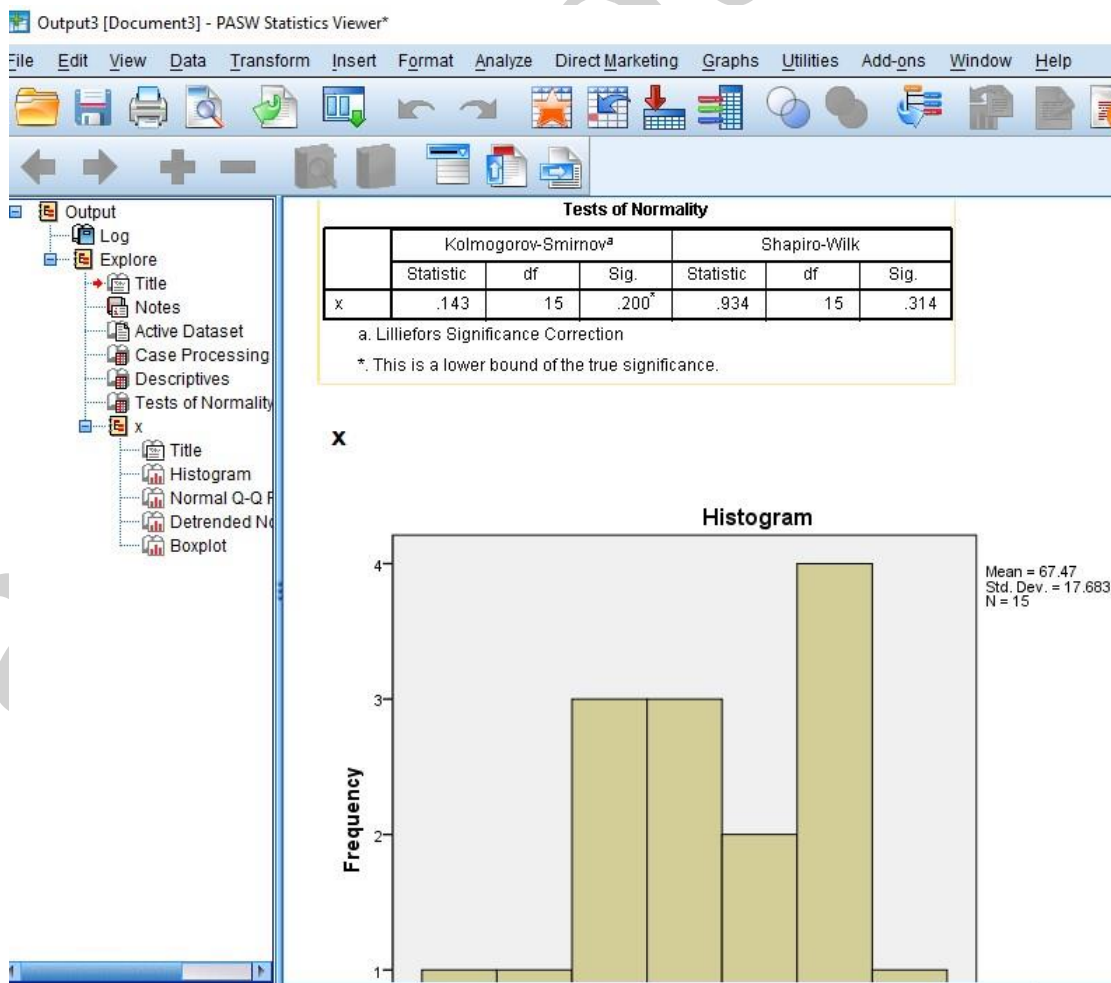
□□ بۇ داخلى كرنىلى داتا (DATA) ئەمەشاشايە دامكەپنەو □□



شاهه ی دووم: OUT PUT VIEWER (دهرگردهگان) VARIABLE) ئهم شاهه یه ی خوارده ده که پنه وه



شاهه ی دووم: OUT PUT VIEWER (دهرگردهگان) بریتیه له و شاهه یه ی که نه نجامه گانمان پیشان ده دات که کردمانه له  
تحلیلاته گان



پیناسه کردنی گۆراوهکان

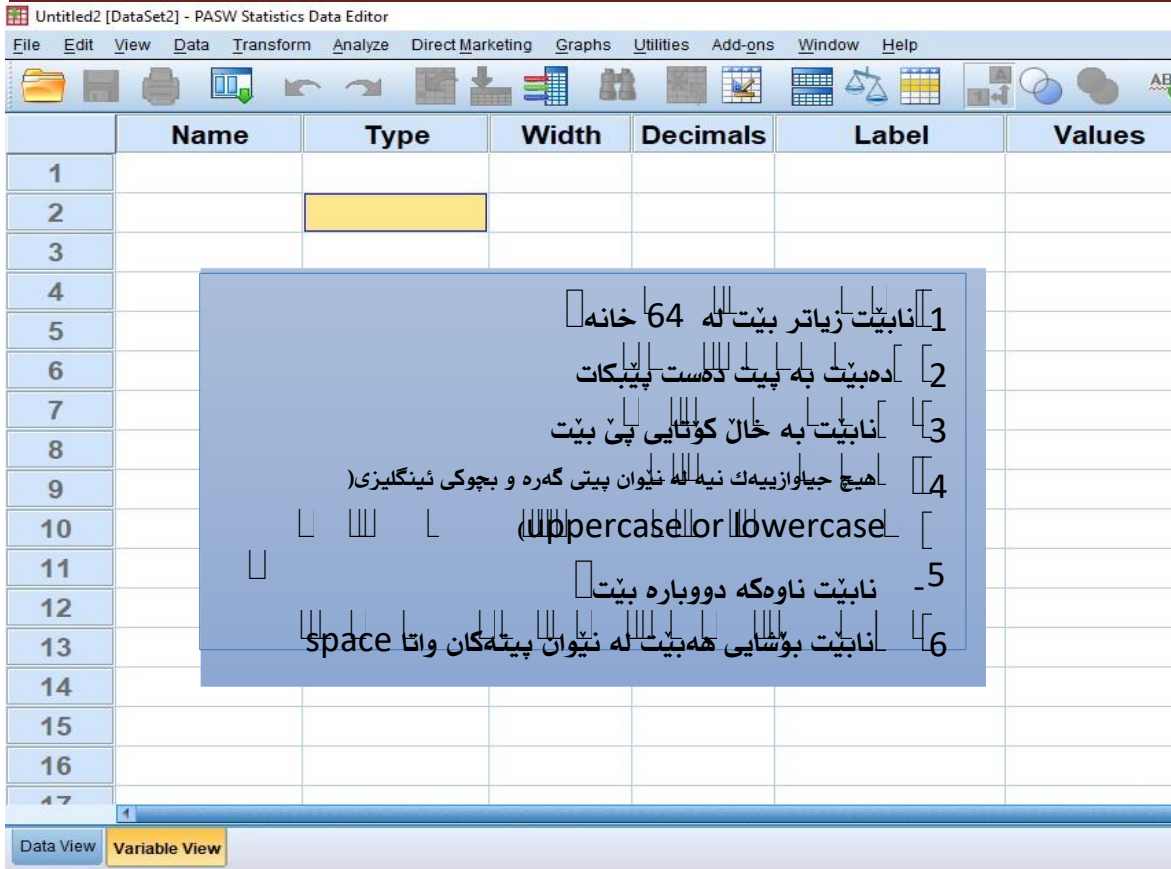
Name -1

## Variable View window: Name

- The first character of the variable name must be alphabetic
- Variable names must be unique, and have to be less than 64 characters.
- Spaces and special characters ( eg !, ?, ', and \*) cannot be used .
- variable names cannot end with a period
- Reserved keywords cannot be used as variable names - these are ALL, AND, BY, EQ, GE, GT, LE, LT, NE, NOT, OR, TO and WITH; (lower and upper case)

	Name	Type	Width	Decimals	Label	Values	Missing	Columns	Align	Measure	Role
1	x	String	8	0	Name	None	None	8	Right	Nominal	Input
2	y	Numeric	8	0	Gender	{1, Male}...	None	8	Right	Scale	Input
3	z	Numeric	8	0	Height	None	None	8	Right	Scale	Input
4											
5											

لهکاتی نووسیتی ناو پیناسه ئهم مهراجانه له بهر چاو بگرین

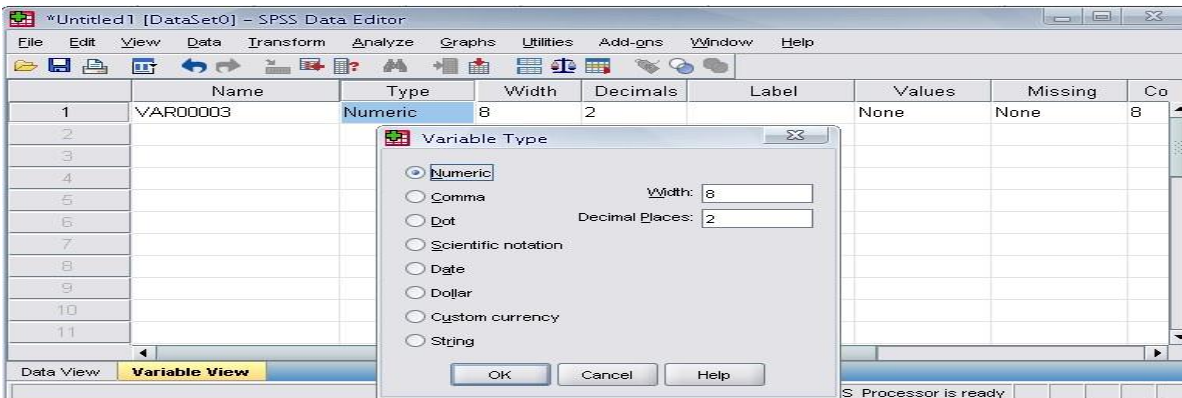


2 Type: جوړی گوراوهگان هه لده بزیږین

## Variable View window: Type

The **Type** column is showing **Numeric** for all rows. This means that numeric (number) values will be expected in the dataset relating to these variables.

- Click on the 'type' box. The two basic types of variables that you will use are numeric and string. This column enables you to specify the type of variable.





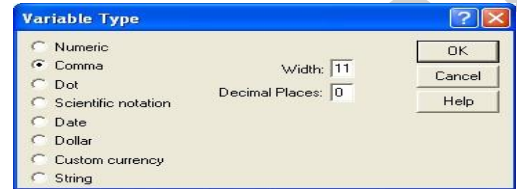
### 1- Numeric:

واتا جوړی گوږاوهکه ژماره يه



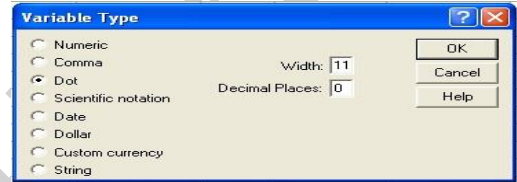
### 2- Comma

اگوږاوهکه ژماره يه هه رسی ژماره به فاریره ليک جيا



### 3-DOT

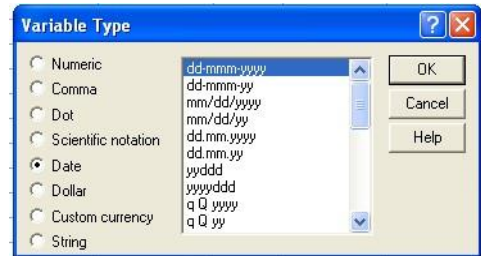
اگوږاوهکه ژماره يه هه رسی ژماره به خائیک (. ) ليک جيا



ل ل ل ل ل ل ل ل ل ل ل ل ل ل ل ل

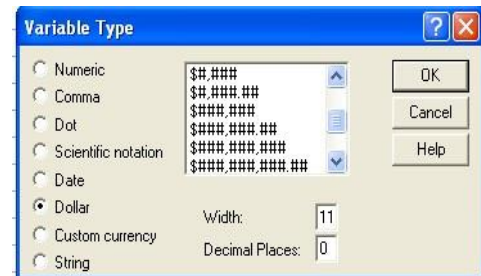
### 4-DATE

بؤ نه و گوږاوانه به کارديت که بمانه ویت ژماره که به شیوه ی تاریخ و رۆژا و سال لبتوسلینا



### 5- Dollar

ابه کارديت بؤ به کارهینانی دۆلار



### 7-CUSTOM CURRENCY

به‌کار دیت بۆ دروه حیووتگان

### 8-STRING

بۆ نعو گۆزوانه به‌کار دیت که ژمارهیی نین

width به‌کار دیت بۆ دیاری کردنی ژماره‌ی خانه‌کان

\*fatema1.sav [DataSet1] - PASW Statistics Data Editor

	Name	Type	Width	Decimals	Label
1	gender	Numeric	8	0	
2	age	Numeric	8	0	
3	x1	Numeric	8	2	
4	x2	Numeric	8	2	
5	x3	Numeric	8	2	
6	x4	Numeric	8	2	
7	x5	Numeric	8	2	
8	x6	Numeric	8	2	
9	x7	Numeric	8	2	
10					
11					
12					

decimals به‌کار دیت بۆ دیاری کردنی ژماره‌ی دوای قاریزه

	Name	Type	Width	Decimals	Label
1	x	Numeric	8	0	
2	y	Numeric	8	2	
3	gender	Numeric	8	0	
4	age	Numeric	8	0	
5					
6					
7					
8					
9					
10					
11					
12					

Variable View

بۇ نووسىلىنى ئاۋىلىغان بۇ گۇرۇھكان بەكار دىت دەتوانىن 256 پىت بنووسىن label 45

1. You can specify the details of the variable
2. You can write characters with spaces up to 256 characters

	Name	Type	Width	Decimals	Label
1	x	Numeric	8	0	
2	y	Numeric	8	0	
3	gender	Numeric	8	0	
4	age	Numeric	8	0	
5					
6					
7					
8					
9					
10					
11					
12					

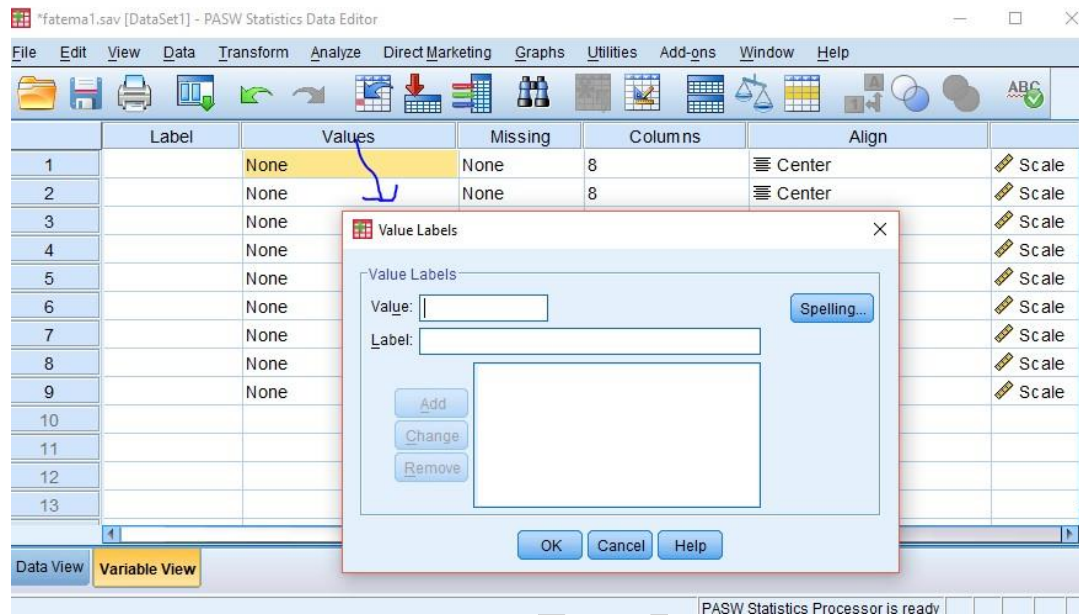
Variable View

6- value: يەككە لە فەرمانە گىرنگەكان بەكار دىت بۇ پىدانى كۆد لە گۇرۇھى نووسىن بۇ گۇرۇھى ژمارەى. سوودى كۆد ئەمەيە كە كات كەم دەكات ئاسان داتاكان داخلى دەپىت و شىكردنەوہى ئاسانە



Click the cell in the values column as shown below For the value, and the label, you can put up to 60 characters.

- After defining the values click add and then click OK.



L L L L L L L L  
L L L L L L L L

به کار دیتا بو دیاری کردنی درینیزی گؤراودهکه columns 7

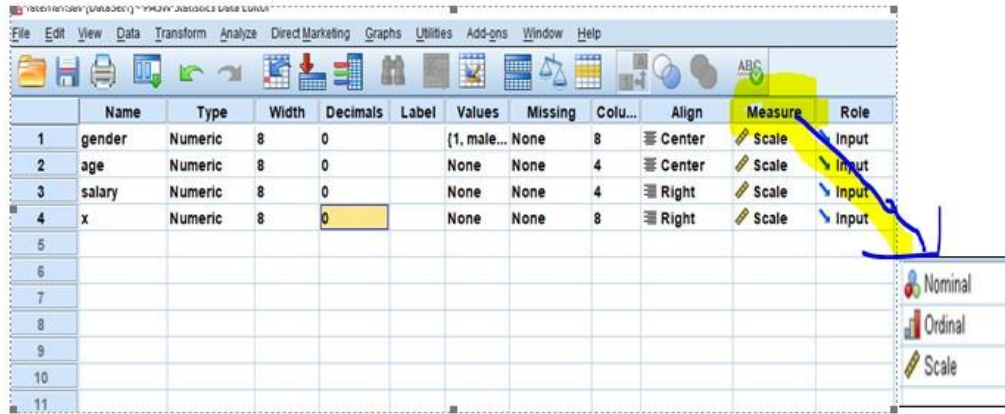
	Values	Missing	Columns	Align	Measure
1		None	8	Center	Scale
2		None	8	Center	Scale
3		None	8	Center	Scale
4		None	8	Center	Scale
5		None	8	Center	Scale
6		None	8	Center	Scale
7		None	8	Center	Scale
8		None	8	Center	Scale
9		None	8	Center	Scale
10					
11					
12					
13					

align 8 لیره پیمان دهلیت نووسین به ناراسته ی گامه لایبات لای راست یان ناوهراست یان چهپ

	Values	Missing	Columns	Align	Measure
1		None	8	Center	Scale
2		None	8	Center	Scale
3		None	8	Center	Scale
4		None	8	Center	Scale
5		None	8	Center	Scale
6		None	8	Center	Scale
7		None	8	Center	Scale
8		None	8	Center	Scale
9		None	8	Center	Scale
10					
11					
12					
13					

| Page

measure – 9: پیوان واتا گؤراودهکه به چ پیوانه دهکین وه سی جورمان هیهه (scale-nominal-ordinal)



	Numeric	String	Date	Time
Scale (Continuous)		n/a		
Ordinal				
Nominal				

| Page

of cases of a particular variable. Also, it is useful to fine Weighted Mean.



