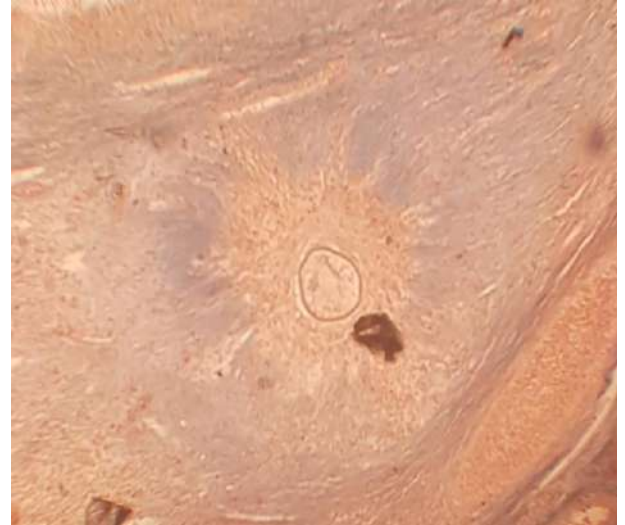


Q1/ A. Identify the slide?

(5 Mark)



B. Fill these blanks:

(5 Mark)

1. The lateral mesoderm of the amphioxus consists of -----and -----.
2. The accessory glands of the male reproductive system consist of-----,-----
- and-----.

Q2/A. Identify the slide?

(5 Mark)



B. Define atretic follicle?

(5 Mark)

Q3/A. Identify the blocks? What is the difference between them? (5 Mark)



B. Define corpus luteum

(5 Mark)

Q4/ A. Identify the slide?

(5 Mark)

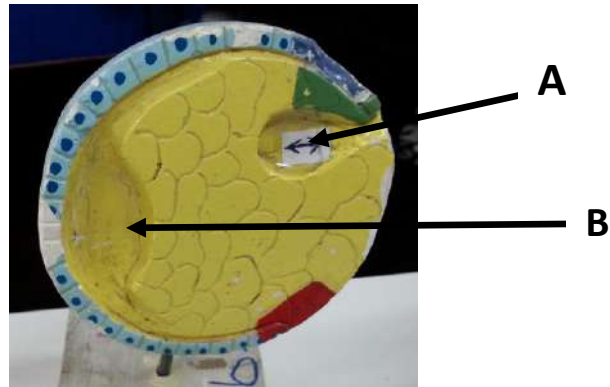


B. Define epiboly?

(5 Mark)

Q5/ A. Name the stage of development? Then label the pointed parts (1) and (2)?

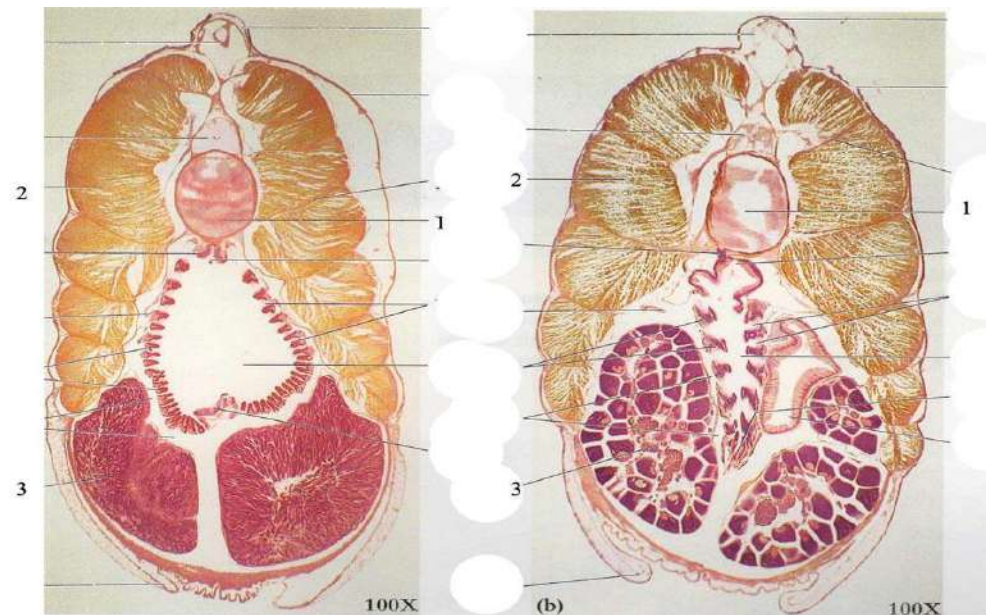
(5 Mark)



B. What is a neurulation?

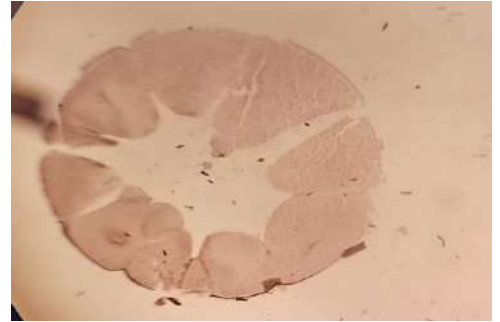
(5 Mark)

Q6/A. Identify the slides? (10 Mark)



Q7/A. Identify the slide?

(5 Mark)



B. Put true or false across this statement:

(5 Mark)

The blastula of amphioxus just like frog

Q8/A. Identify the block?

(5 Mark)



B. Define Zona pellucida

(5 Mark)

Q9/ A. Identify the pointed part? To which animal belong? (10 Mark)



Q10/ Write the function of the followings:-

(10 Marks)

1. Sertoli cell
2. Jelly membrane around the egg of Amphibians

Q11/ What is the importance of embryology?

(10 Marks)

Q12/ Write the name of Excurrent ducts which is present in male reproductive system? (10 Marks)

Q13/ The wall of body and fundus of uterus are composed of ?

(10 Marks)

Q14/ Draw and label blastula of amphioxus?

(10 Mark)

Q15/ Identify the slide?

