



# Evaluate Beef Cattle

Lec. Shireen Ihsan

**Beef Cattle Production -**

Practical

Collage of Agricultural Engineering

Sciences

Animal Resource Department

Salahaddin University - Erbil



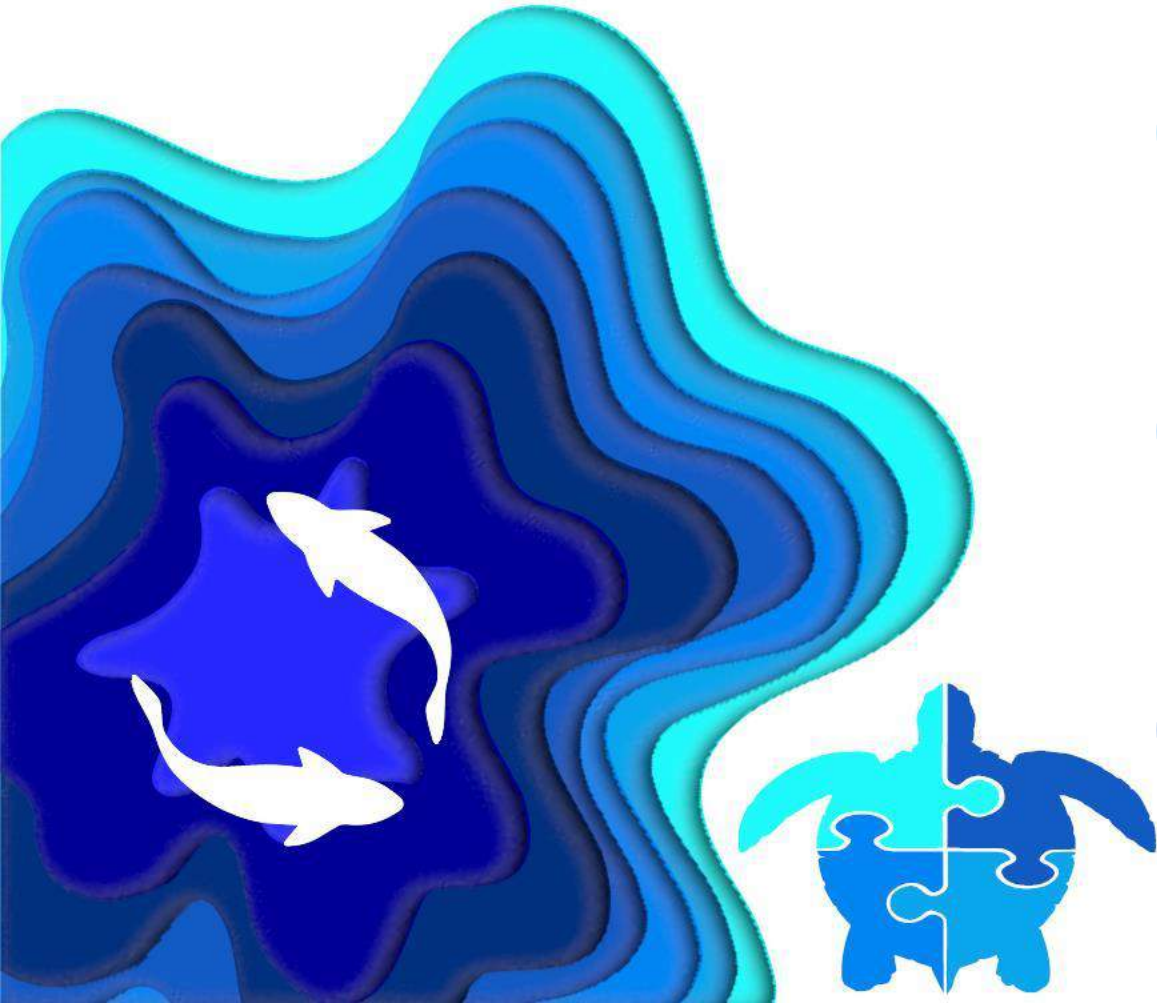
# Outline

**01** Cattle Judging

**02** Importance of Evaluate

**03** Parts of Animal's Body

**04** Beef Animal Selection



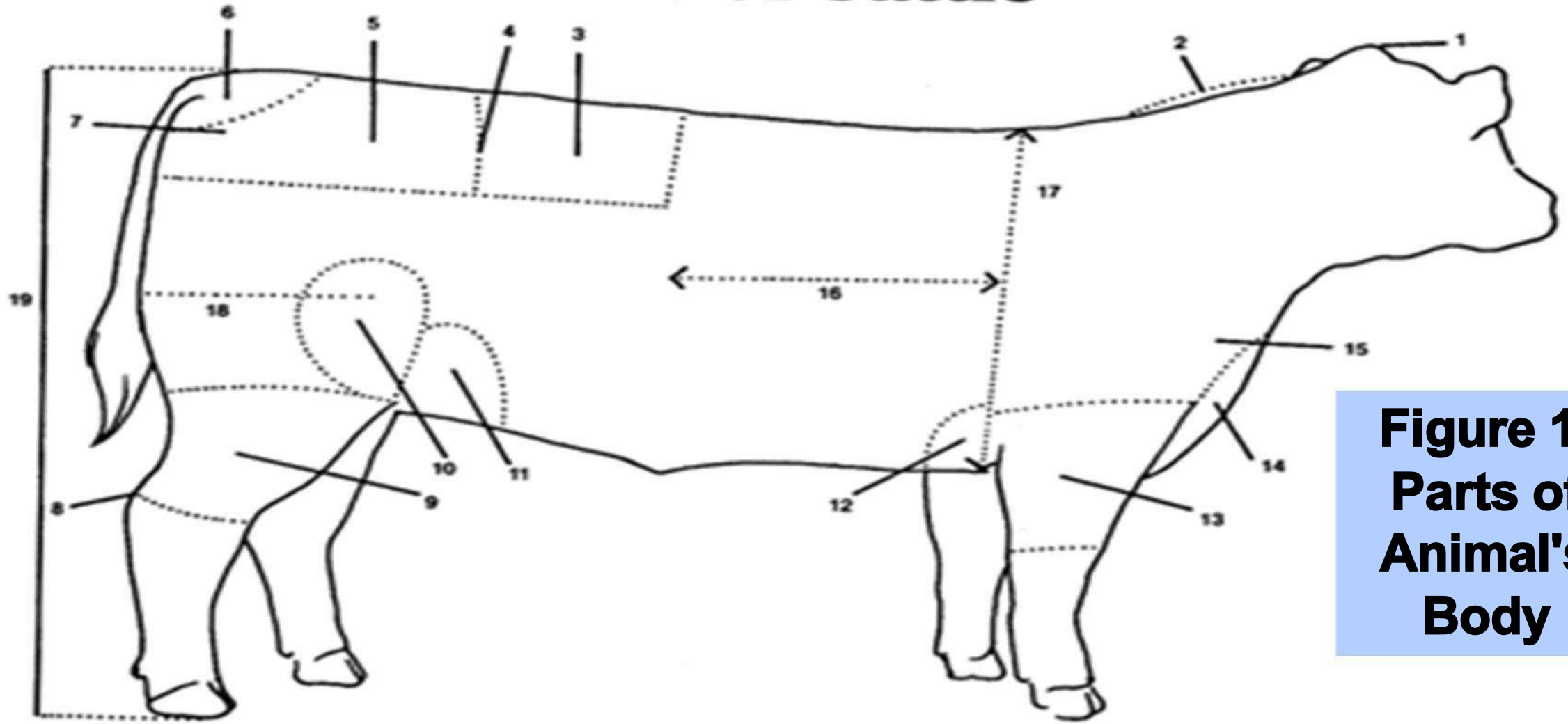
## **Cattle Judging:**

are the process of judging a series of cattle and pronouncing a first, second and third place animal based on each animal's individual compared to that of the others.



## **Importance of Evaluate**

A livestock producer must possess the proper understanding of live animal and carcass evaluation in order to remain competitive (rekabet) in today's changing marketplace. Furthermore, the producer should develop an ability to correlate these factors with the conformation or shape of the live animal. Most market animals are bought and sold on the basis of visual estimation.



**Figure 1.  
Parts of  
Animal's  
Body**

- 1 Poll**
- 2 Crest**
- 3 Loin**
- 4 Hook or Hip Bone**
- 5 Rump**
- 6 Tail Head**
- 7 Pin Bone**

- 8 Hock**
- 9 Hind Shank**
- 10 Stifle**
- 11 Rear Flank**
- 12 Fore Flank**
- 13 Fore Shank**
- 14 Brisket**

- 15 Point of Shoulder**
- 16 Ribs**
- 17 Heart Girth or Depth of Chest**
- 18 Length of Rump**
- 19 Height at Hip**





## **Beef Animal Selection:**

### **1. Growth, Frame and Skeletal Size:**

The Beef Industry has ideal final weights and carcass weights of 550 - 600 kg and 300 – 400 kg. Market ready animals can be too small (less than 450 kg) and cost the industry more per kilogram or too large (650 kg) for handling facilities or consumers.

# 1. Growth, Frame and Skeletal Size:

Indicators of size are:

1. length of body
2. height at the hip
3. length and size of cannon bone.

Below is a picture of a small, medium and large frame steer.





Figure 2. Cattle Frame Size



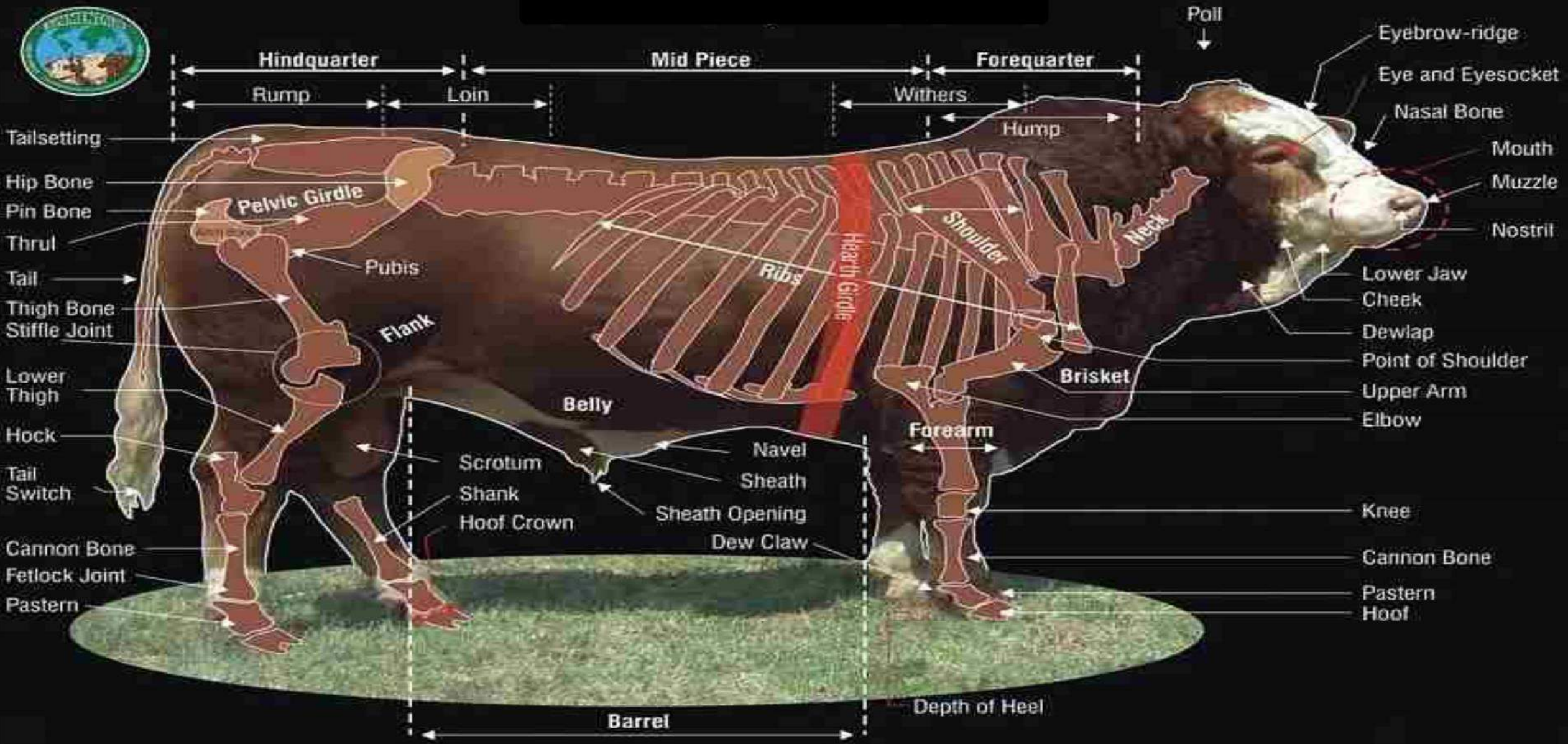


Figure 3. Skeletal System of Bull



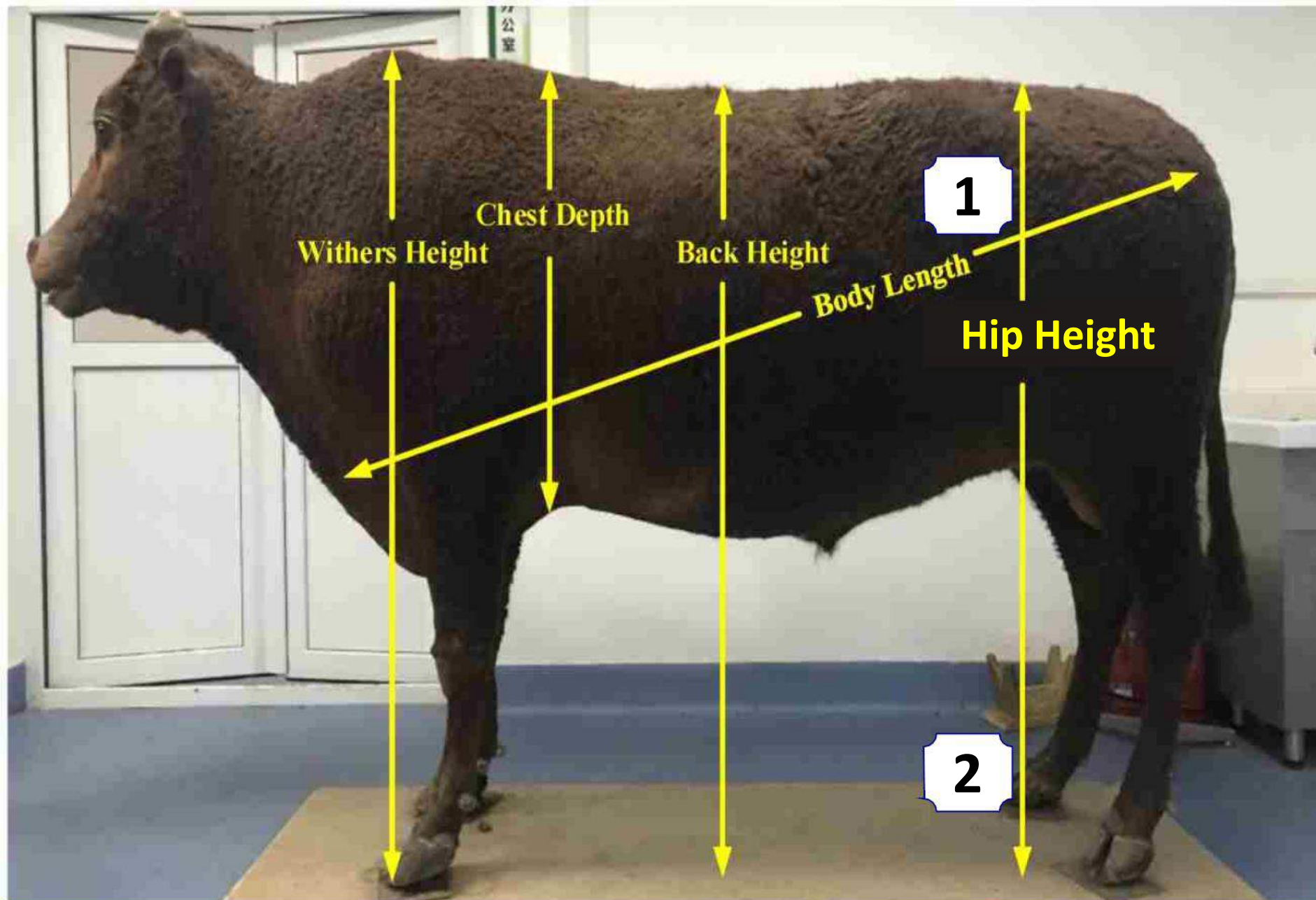
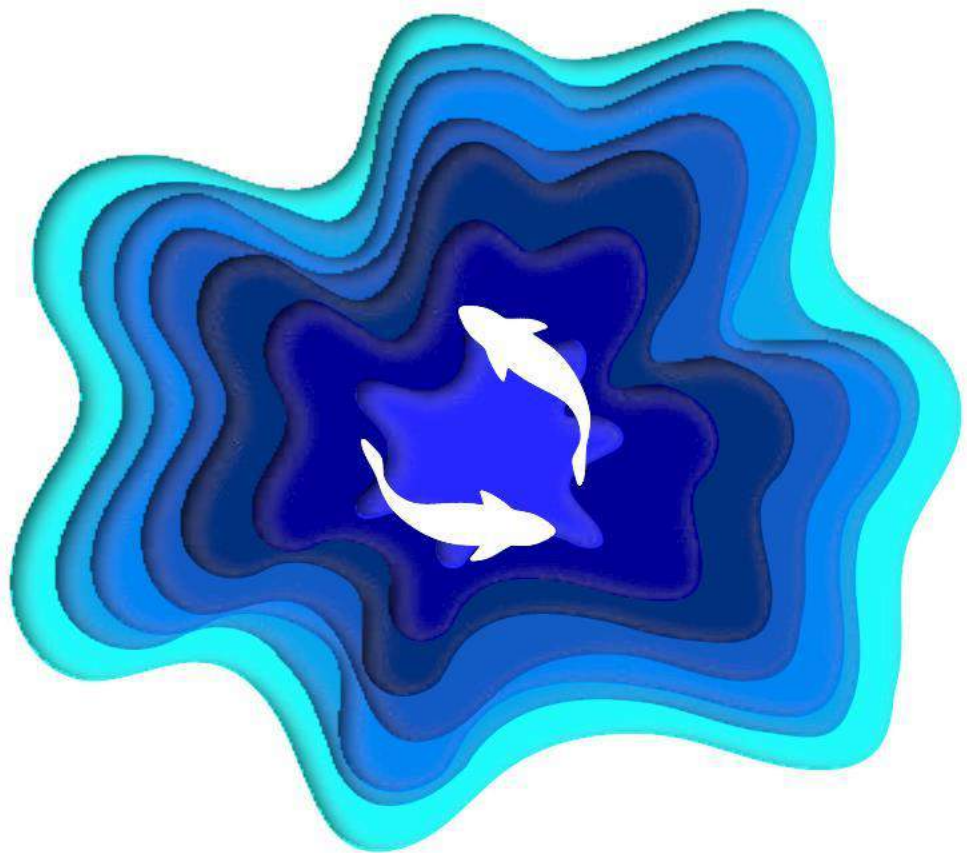


Figure 4. Body Measurements of Beef



**Figure 9. Cattle Muscling**





**THANK YOU**