



Q: Why do we use line weights in architectural drawings?

Line weights are used in architectural drawings to demonstrate **relationships between elements, create depth, scale**, to create **a hierarchy** in the drawing and to add **clarity** to allow the viewer to better understand the drawing.

Not only do we use line weights in architectural sketching, we also use them in all stages of architectural drawing, both hand drawings and computer generated drawings.



Thick Line



Medium Line



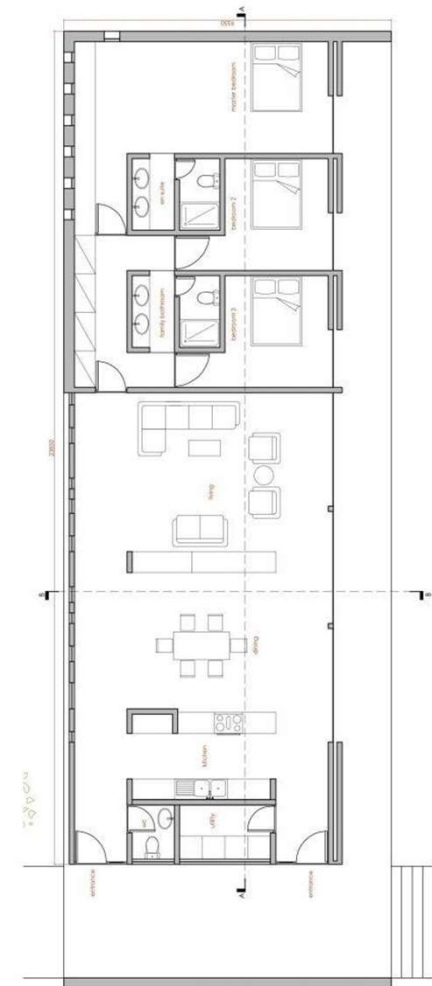
Thin Line



Superfine Line



Dashed Line





Line-Weight

Another property of lines is **lineweight**, or how wide they display on the screen and when printed.

One common example of a heavier lineweight would be a border around a title block. Some times, you may use a lighter lineweight for hatching. But whatever you use them for, they are powerful display options.

Here are the range of lineweights available (There are more options in between:)

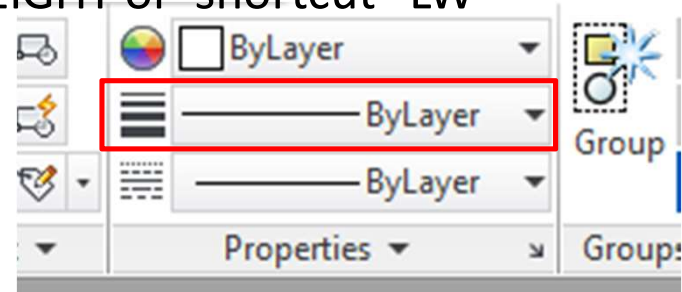
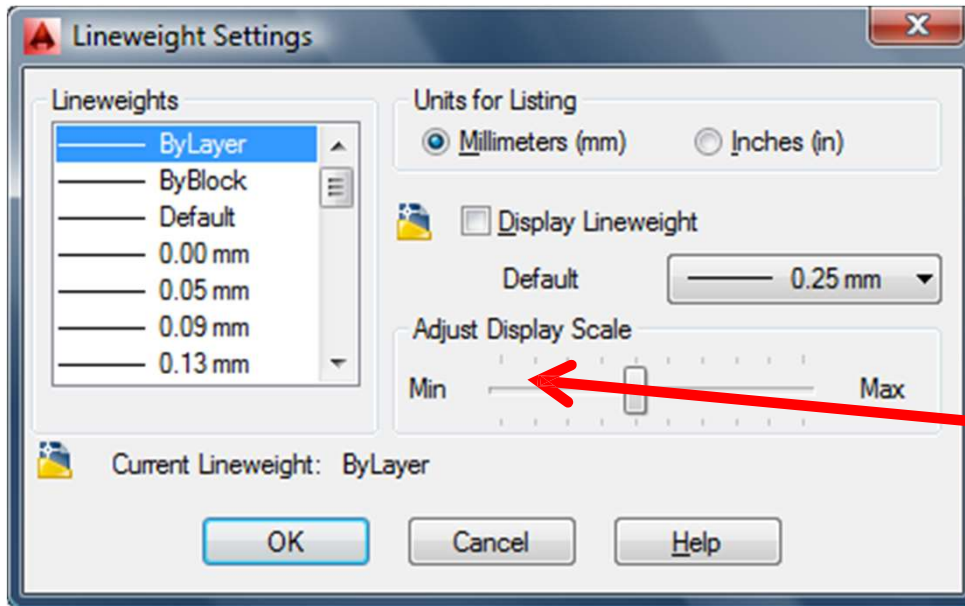
_____	DEFAULT	.010 ^{''}
_____		.012 ^{''}
_____		.039 ^{''}
_____		.083 ^{''}



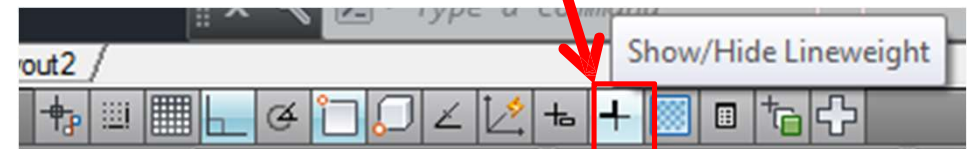
Line-Weight

.Sets the current line-weight, line-weight display options, and line-weight units

”In command : LWEIGHT or shortcut “LW



MUST BE ON “SHOW” MODE SO THAT THE LINE WEIGHTS IN VIEWPORT IS VISIBLE





Line-Weight in Layer Properties Manager

The screenshot displays the AutoCAD interface with the Layer Properties Manager (LPM) and the Lineweight dialog box open. The LPM shows a list of layers with their properties, including Linetype, Lineweight, and Plot Style. The Lineweight dialog box is currently set to 0.40 mm. A tooltip explains that the available lineweights are fixed values commonly used in drawings.

Lineweight Dialog Box:

Lineweights:

- 0.00 mm
- 0.05 mm
- 0.09 mm
- 0.13 mm
- 0.15 mm
- 0.18 mm
- 0.20 mm
- 0.25 mm
- 0.30 mm
- 0.35 mm
- 0.40 mm (Selected)

Original: 0.40 mm
New: 0.40 mm

Buttons: OK, Cancel, Help

Tooltip: Displays the available lineweights to be applied. Available lineweights consist of fixed values that are most commonly used in drawings. Select a lineweight to apply it.

Layer Properties Manager Table:

Layer Name	Linetype	Lineweight	Transpare...	Plot Style	Plot	New VP Freeze
0	Continuous	— Defa...	0	Color_7	Print	Freeze
Defpo	Continuous	— Defa...	0	Color_7	Print	Freeze
DIM	Continuous	— Defa...	0	Color_7	Print	Freeze
doors	Continuous	— Defa...	0	Color_4	Print	Freeze
Struct	Continuous	— Defa...	0	Color_3	Print	Freeze
walls	Continuous	— 0.40 ...	0	Color_21	Print	Freeze
windows	Continuous	— Defa...	0	Color_6	Print	Freeze



Line-Weight in Properties

Line (5)

General

Color	ByLayer
Layer	walls
Linetype	ByLayer
Linetype scale	1
Plot style	BvColor
Lineweight	ByLayer
Transparency	ByLayer
Hyperlink	
Thickness	0

3D Visualization

Material	ByLayer
----------	---------

Geometry

Start X	*VARIES*
Start Y	*VARIES*
Start Z	0
End X	*VARIES*
End Y	*VARIES*
End Z	0
Delta X	*VARIES*
Delta Y	*VARIES*
Delta Z	0
Length	*VARIES*
Angle	*VARIES*

- Repeat Properties
- Recent Input
- Clipboard
- Isolate
- Erase
- Move
- Copy Selection
- Scale
- Rotate
- Draw Order
- Group
- Select Similar
- Deselect All
- Subobject Selection Filter
- Quick Select...
- QuickCalc
- Find...
- Properties**
- Quick Properties

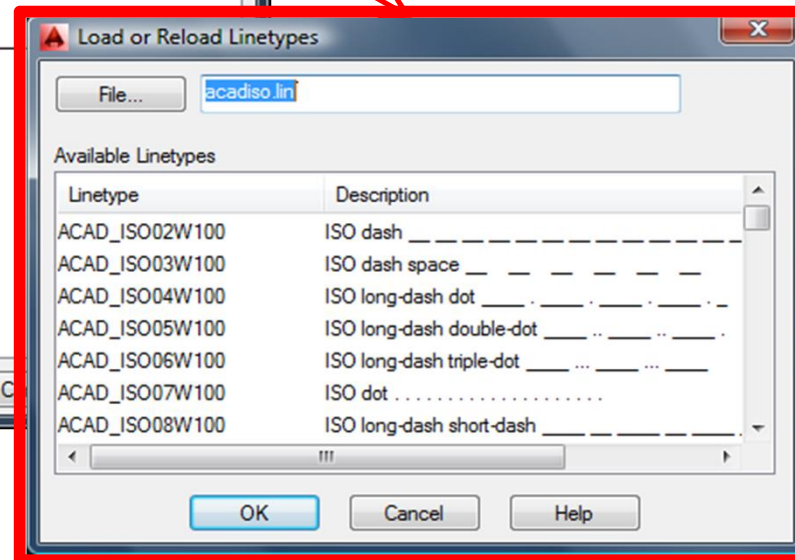
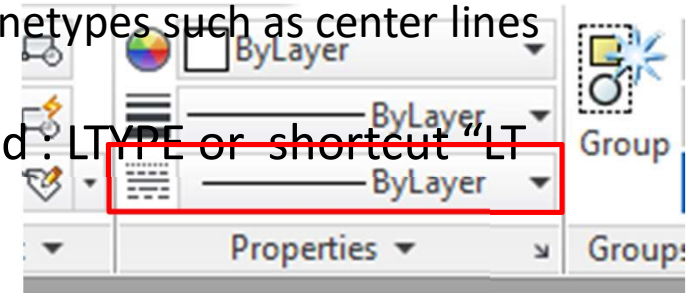
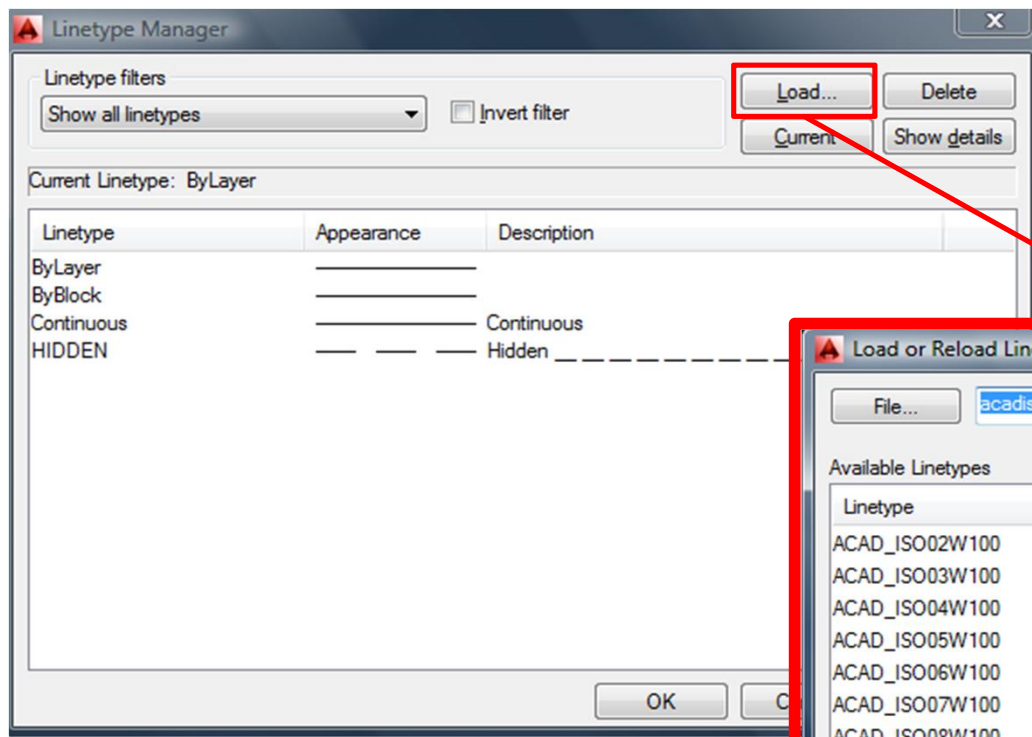




Line-Type

almost all of the lines have been **continuous**. This is a particular linetype. Most simple drawings can be drawn with just this one linetype. More advanced drawings will require different linetypes such as center lines

"In command: LTYPE or shortcut "LT"





Line-Type in Layer Properties Manager

