



Public Facilities [Lounges and bars]

Location

Lounges and associated bars or refreshment service are often provided:-

- in or near the lobby for waiting and meetings between guests and visitors.**
- for entertainment, social relaxation, including piano or cocktail bars.**
- in association with high class restaurants and other services.**
- for conference groups and functions as informal breakout areas.**

In city centers the lobby tends to be a popular meeting place for visitors and guests.

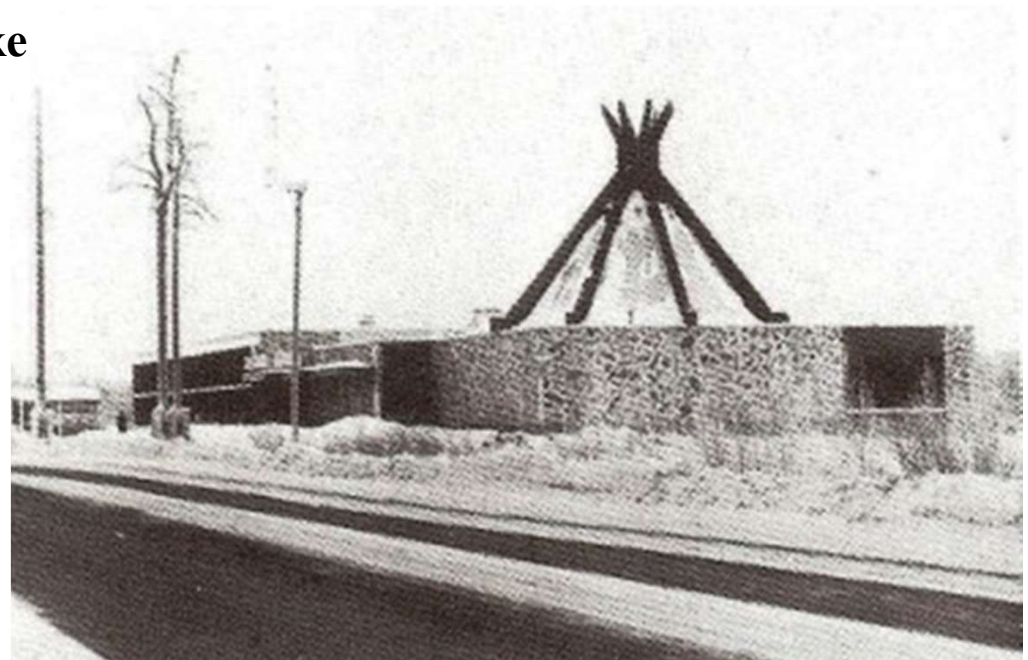


Public Facilities

Kuusamon Hotel, Kuulama, Lapland

Located on the edge of the Arctic Circle, the Kuusamon Hotel providing 44 guestrooms with restaurants, a dance hall, small casino and swimming pool.

The design reflects the character of the area and features an octagonal tent-like roof as well as exposed hewn stonework in the facades.





Public Facilities [Lounges and bars]

Features [Lobby lounge and bar]

Lounge seating is required in or adjacent to the lobby usually taking up some 10% of this space.

The lounge must be clearly visible but separated from desk areas and circulation. Service of beverages and light refreshments is provided through a small dispense bar with access to the kitchen or local pantry. A piano may be provided for quiet entertainment.

Design

In restaurant design emphasis is usually given to the views out of windows (of scenery or recreational activities). Lounges are normally orientated around the bar and entertainment areas.

Public Facilities

Othon Palace Hotel, Bahia, Brazil

