

**University of Salahaddin
College of Engineering
Department of Architecture**



General Ward Department Third Lecture



**Supervised by
Dr. Muhannad G. Rassam
M.Sc. Nazik Jamal
2022-2023**

General Ward Department

General comments

The care departments are each assigned to a specialist discipline and subdivided into care groups.

To maintain an adequate level of supervision each care area should contain no more than **(16-24) beds.**

For economical use of staff, **two workstations** are often placed together and connected to a large central nurses' service area (caring for about **30-34** patients).



General Ward Department

General comments

Nursing areas should be distinguished:-

- Normal nursing area.
- Intensive care area.
- Special care area.

There are fewer beds per care group in the intensive care and special care areas (6-12 beds, depending on the size of the hospital).

These rooms should be larger than normal care rooms because more instruments and equipment need to be accommodated.



General Ward Department

The smallest size for a one-bed room is **10 m²**; for a two- and three-bed room, a minimum of **8 m²** per bed should be allowed.

The room must be wide enough for a second bed to be wheeled out of the room without disturbing the first bed .

Next to each bed must be a night table and, where appropriate, towards the window there should be a table (**900 x 900 mm**) with chairs (one chair per patient).



General Ward Department

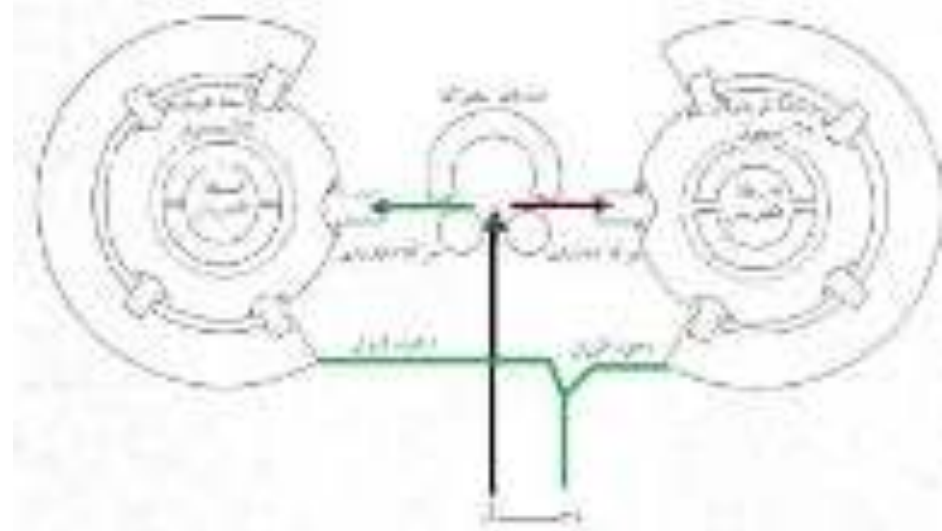
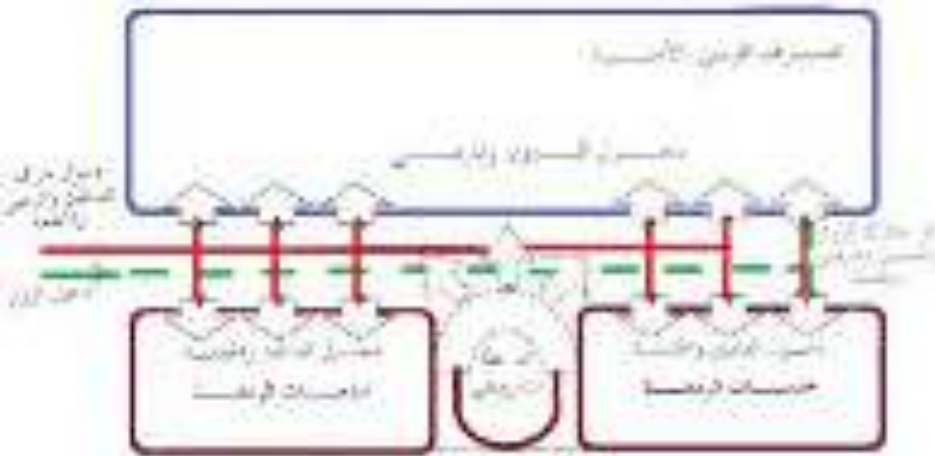
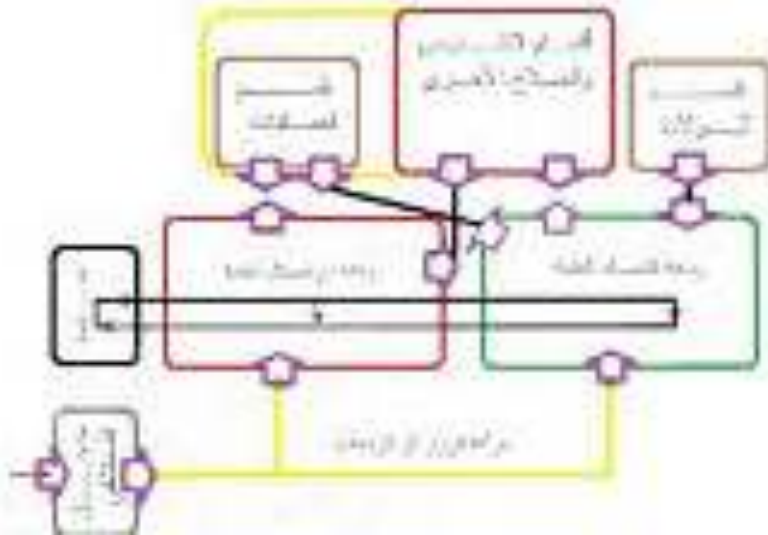
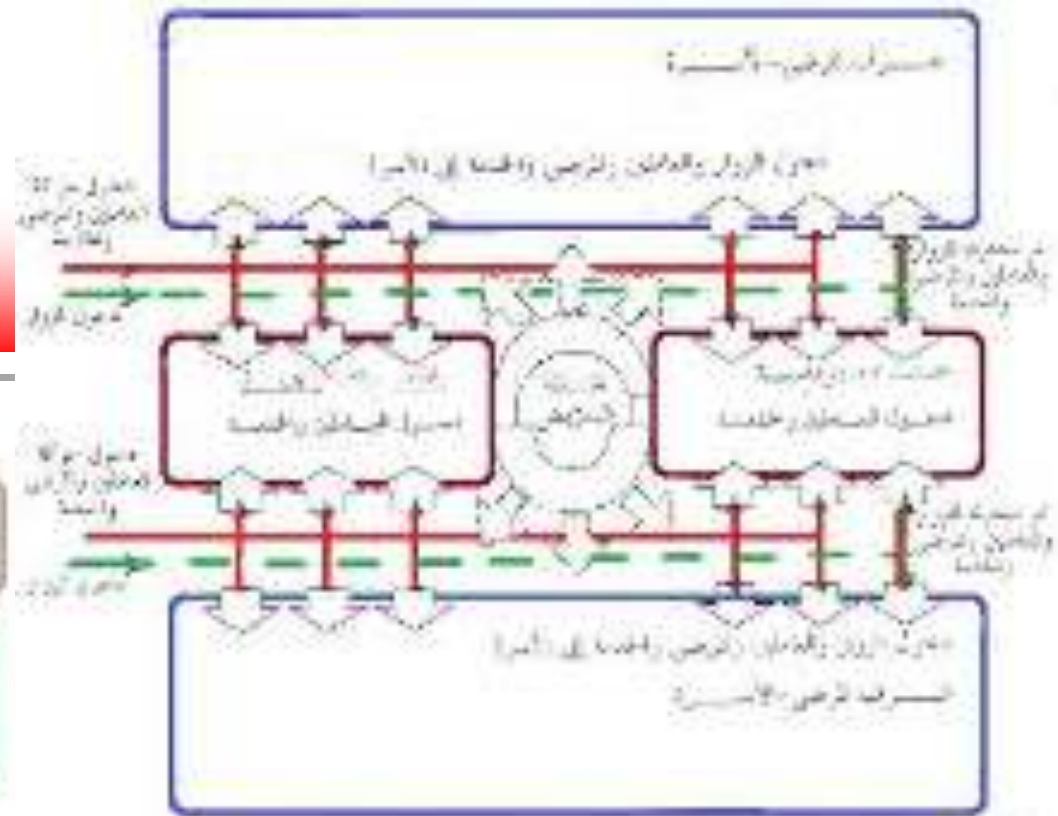
Around the walls there should be a strip made of plastic or wood (at **least 400-700 mm** above floor level) to protect the wall from damage caused by the movement of beds. The room doors must be **1260 x 2130 mm** in size.

Attention must be paid to the heights of the wash-basin and the WC: the wash-basin needs to be roughly **860 mm** from the floor to allow wheelchairs underneath and the WC for wheelchair users should have a seat height of about **490 mm**.


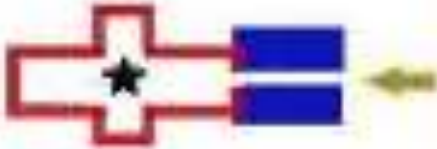


Each station must also have **additional WCs for staff, visitors and wheelchair users**.



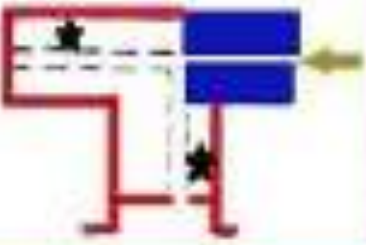
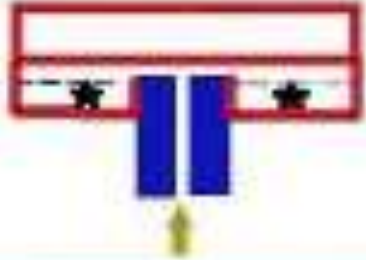







General Ward Department



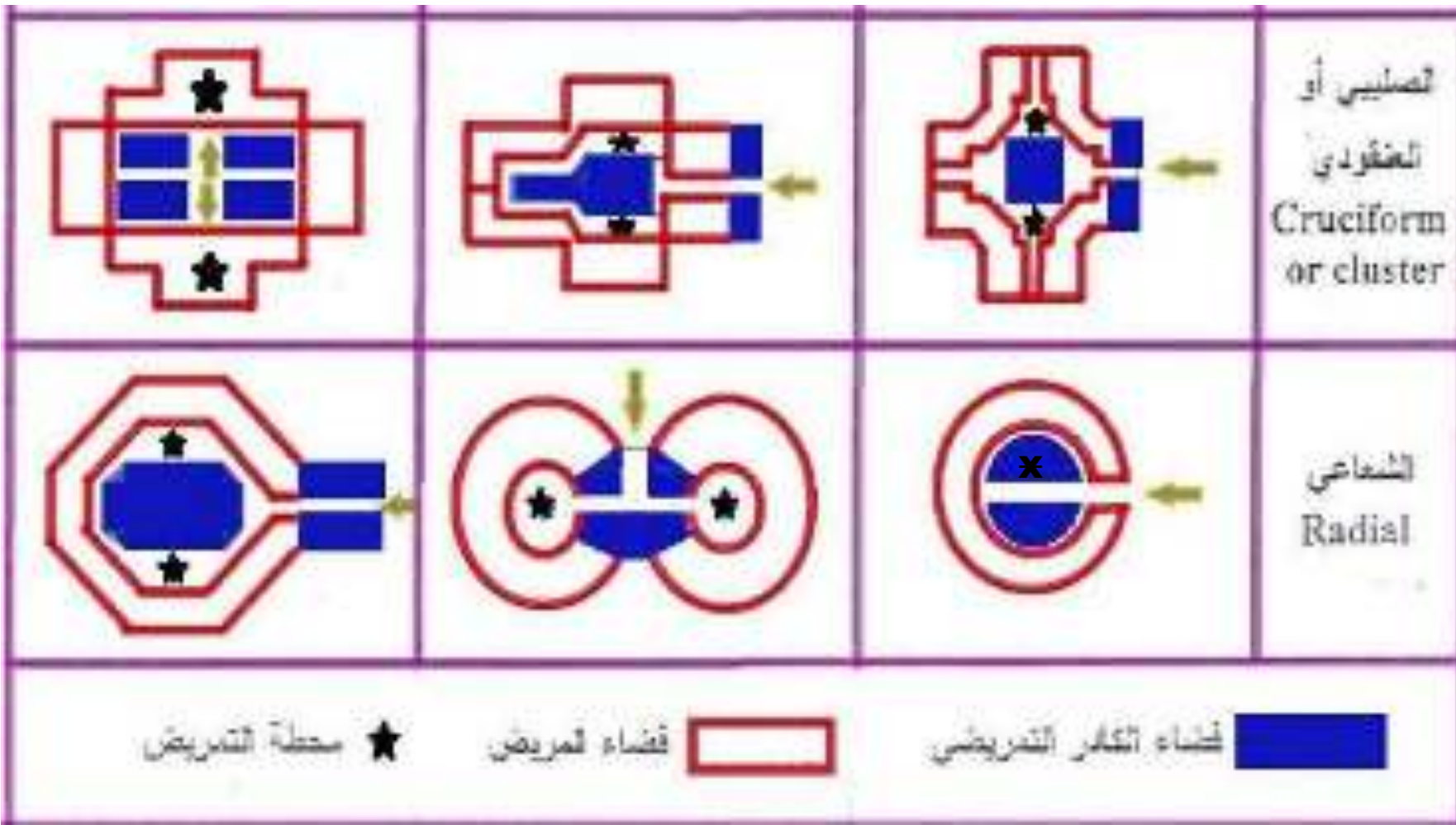
General Ward Department

الأشكال المعقدة	الأشكال البسيطة	التنوع
		<p>المسقط المفتوح Open or Nightingale</p>
		<p>الممر الفردي Corridor or continental</p>

General Ward Department

			<p>نوع المزدوج Duplex or Nuffield</p>
			<p>حلبة للمباني أو نوع المزدوج Racetrack</p>
			<p>لقاء Courtyard</p>

General Ward Department



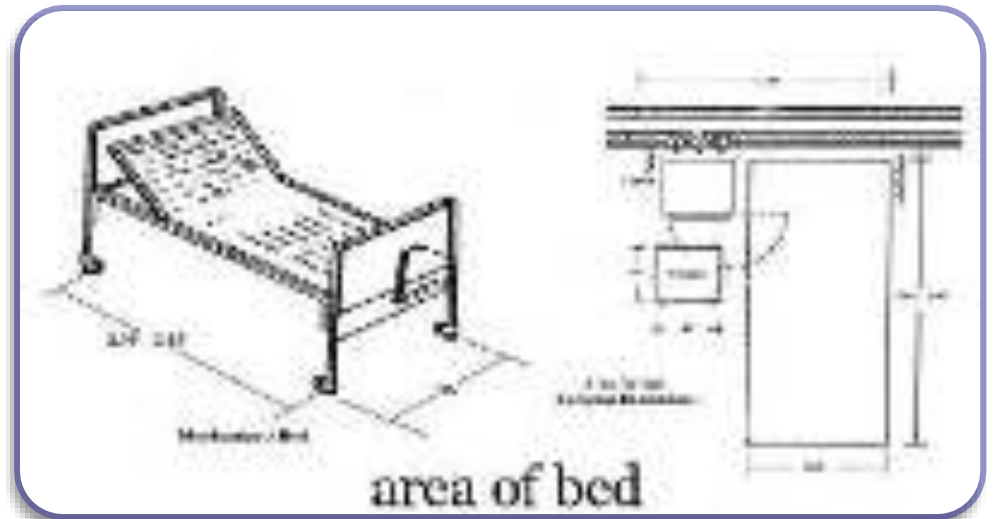
General Ward Department

A Nightingale ward is a type of hospital ward, which contains one large room without subdivisions for patient occupancy.

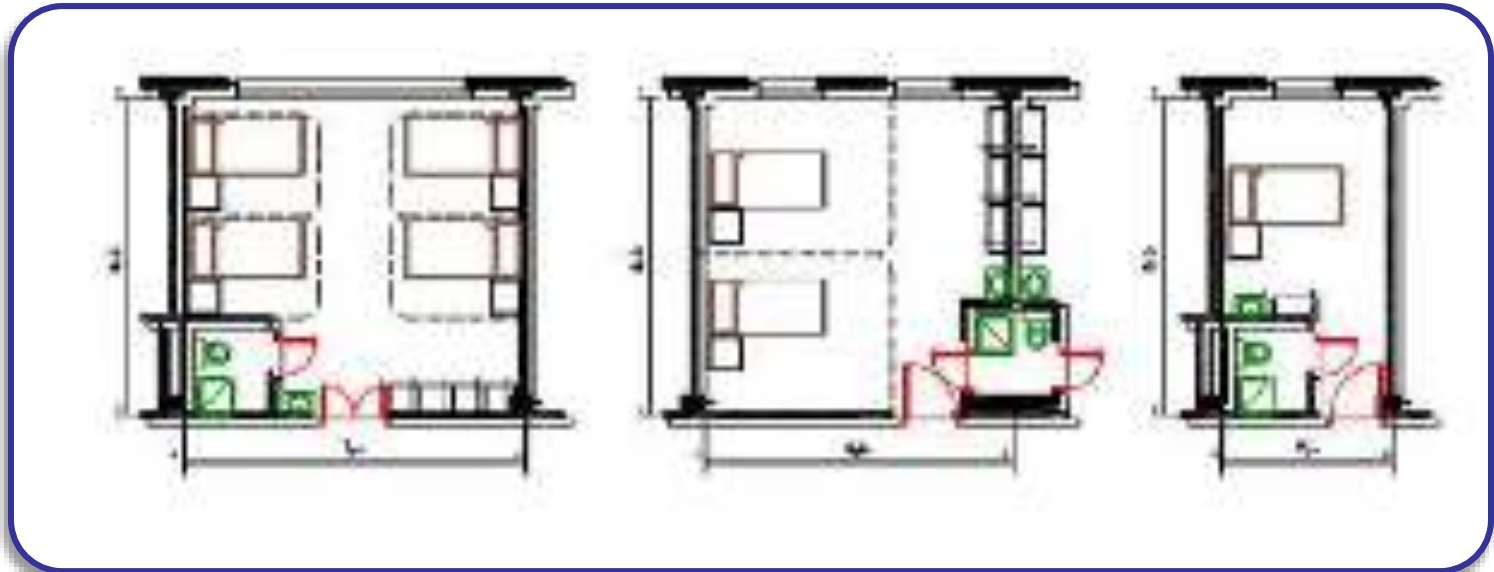
Nightingale wards contain about 24 to 34 beds usually arranged along the sides of the ward.



General Ward Department



General Ward Department

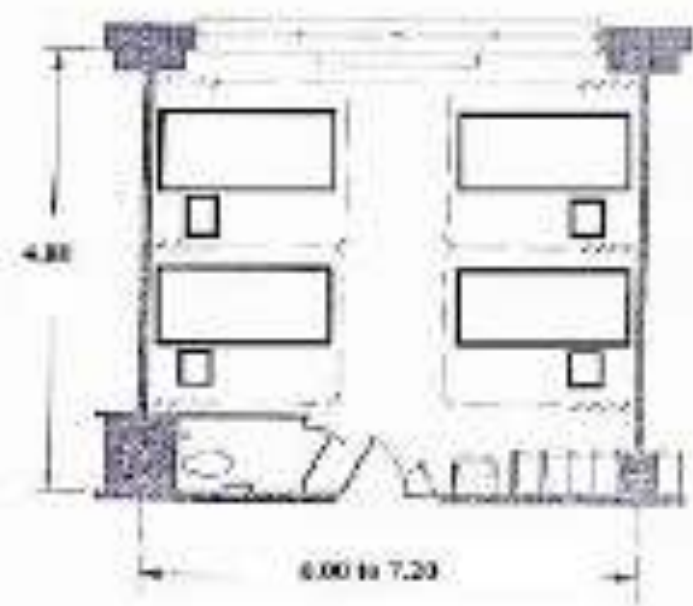
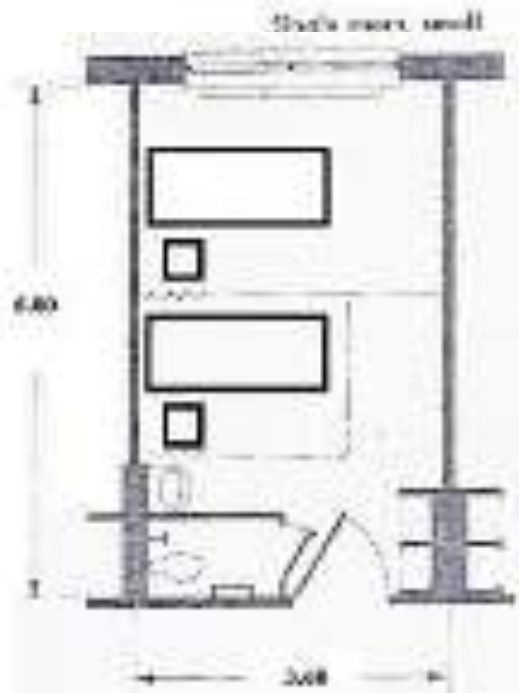


General Ward Dep



Single room, small

Single room, medium size



Double bedroom, small, aimed

Double room, medium size

Furnished room

Wards Department



Plan showing ward to have middle aisle with sleeping quarters on either side of central corridor. Includes kitchen, WC, and linen room. February 1910



Plan ward room (General Hospital ward)



Double ward room with two double rooms. Includes two wardrooms, kitchen, and linen room.



Plan ward room (General Hospital ward)



Double ward room, kitchen, linen room, and ward room.



Double ward room, kitchen, linen room, and ward room.

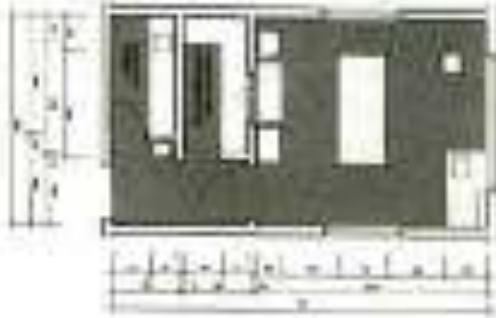


Double ward room with central hallway, kitchen, linen room, and ward room.

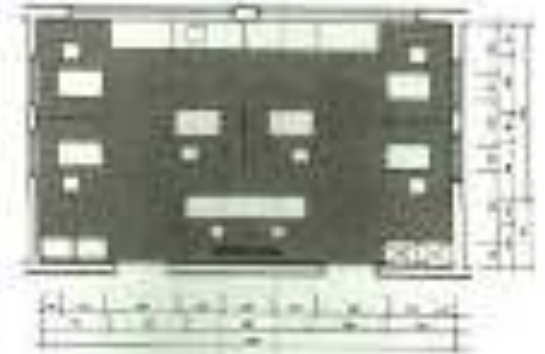
Wards Department [Children-Neonatal]



Single ward for children and youth, waiting and
and waiting area for parents and visitors



Single ward for children and youth, waiting and
waiting area.



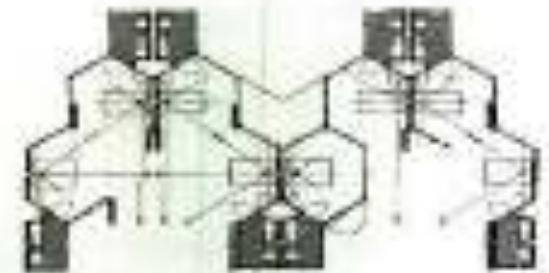
Single ward for children and youth, waiting and
waiting area.



Single ward with waiting area and
waiting area for parents and visitors
architect Thomas G. G. G.



Single ward with waiting area and
waiting area for parents and visitors

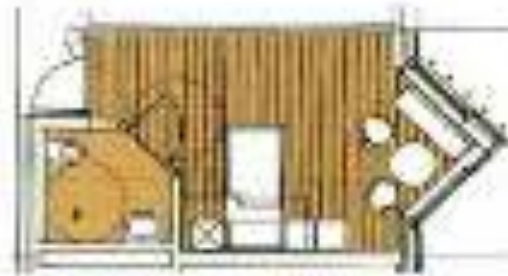


Single ward with waiting area and
waiting area for parents and visitors

Wards Department [Geriatric-Rehabilitator- Nuclear Medicine]



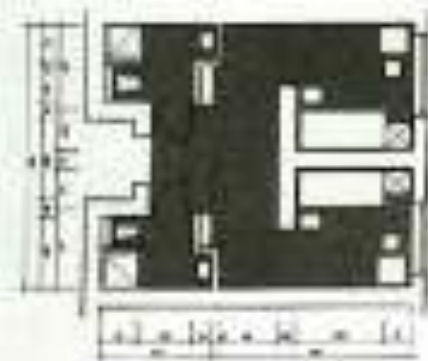
Single room for general wards.
 Größe: 17m² (18m²)



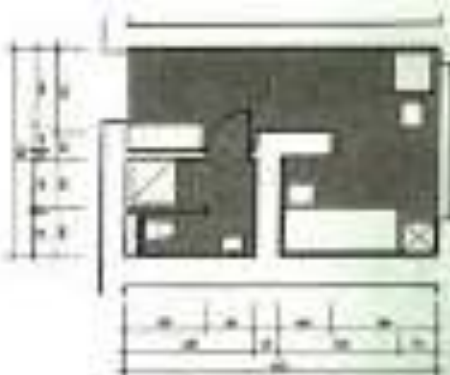
Single room for an elderly patient, featuring a window.
 Includes a desk, chair, and bed.



Double and three-bedded room for elderly patients.
 Includes a window, desk, chair, and bed.



Double room in nurse's station.



Single room in nurse's station.

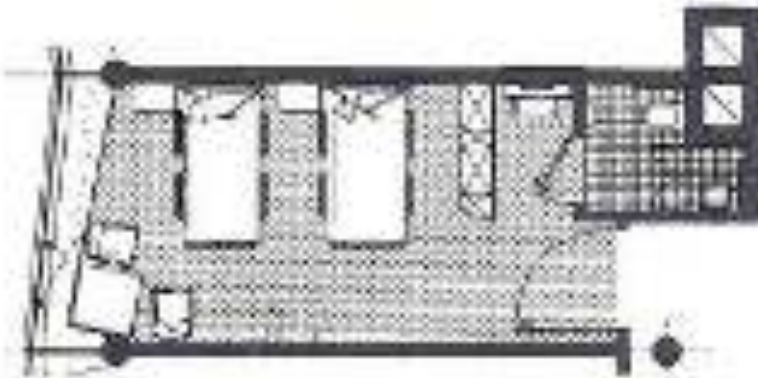


Double room for general wards.
 Includes a window, desk, chair, and bed.

General Ward Department

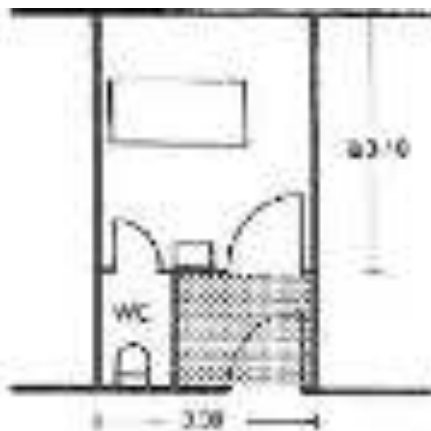


General Ward Department



② Two-bed room with shower

Architect: Neil S. Ferrey



④ Single-bed room with lobby

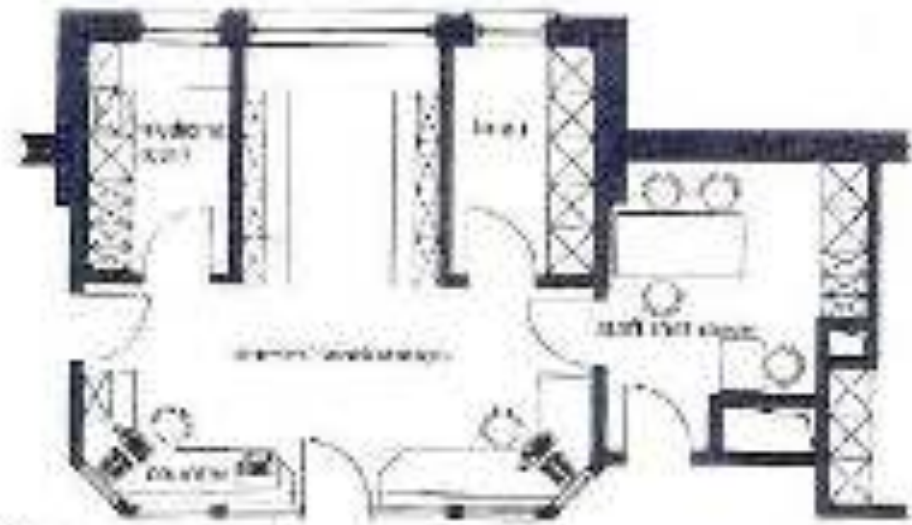


⑤ Single-bed room, no lobby; elevators possible from corridor

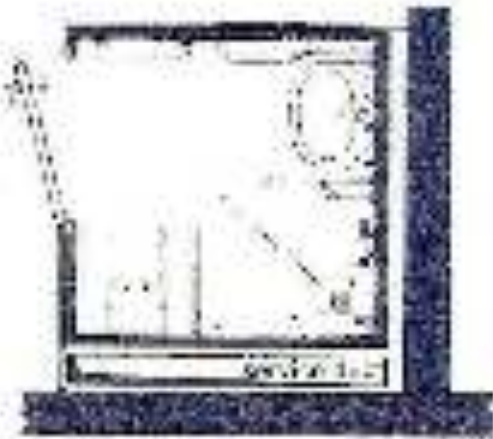


① Two- and four-bed private rooms; St. Anne Catholic Hospital

General Ward



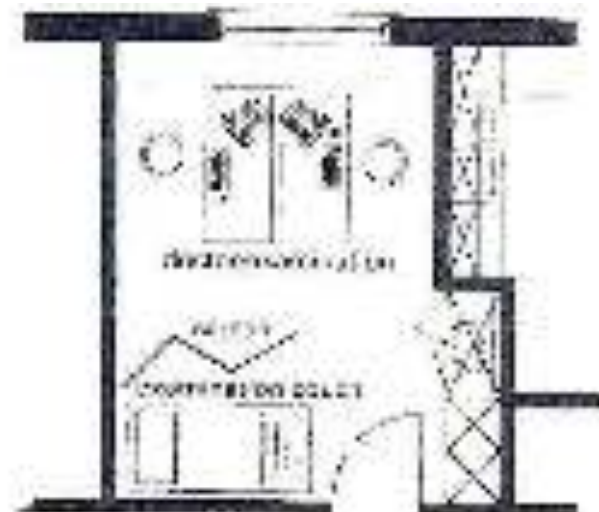
① Nurses' work area



② Patient bed view

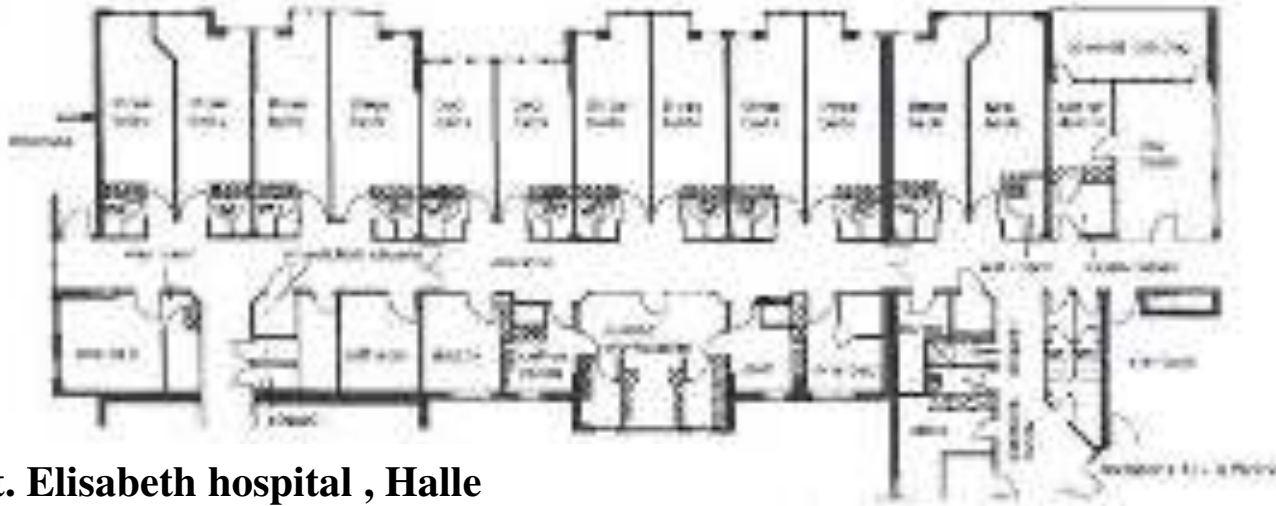
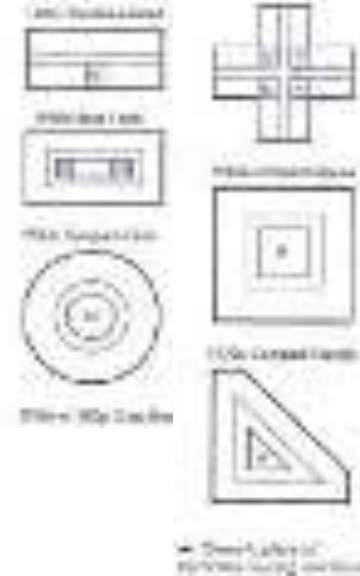


⑤ Elevation + ④

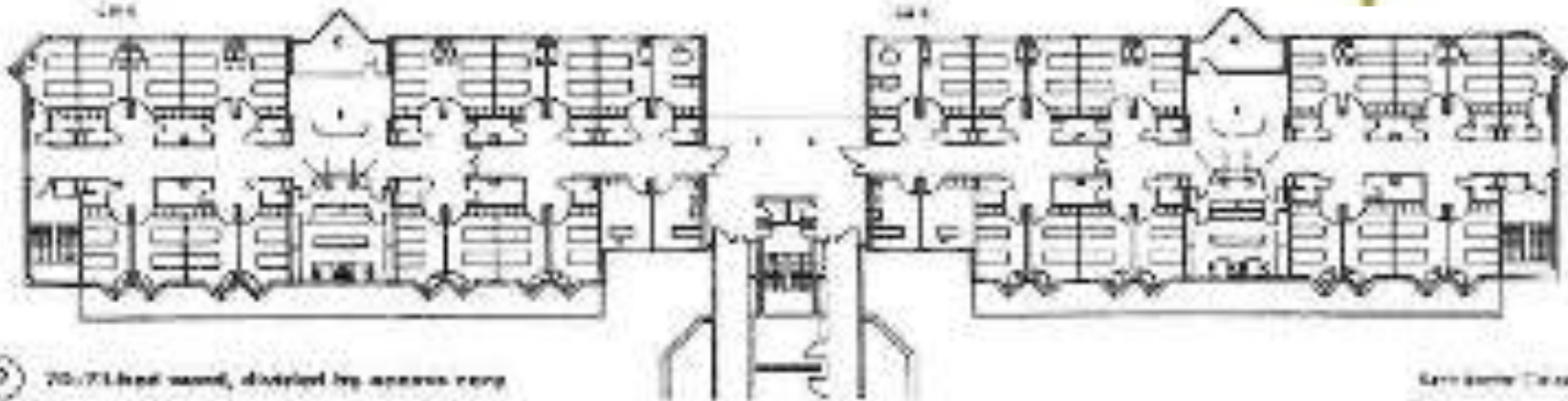
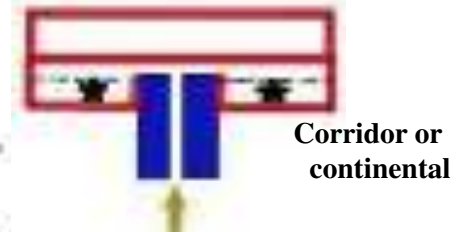


③ Station doctor area size 16-20 sqft

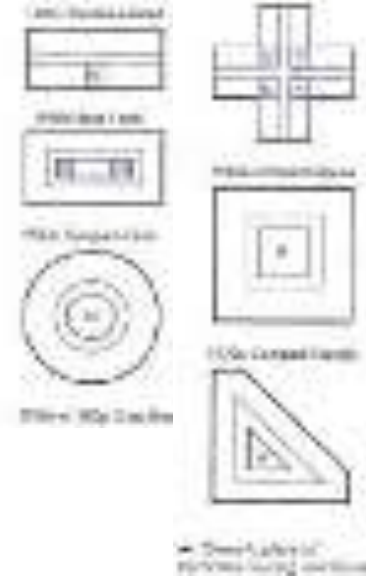
General Ward Department



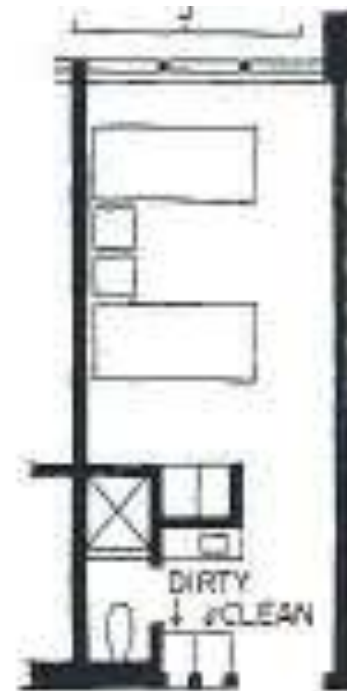
St. Elisabeth hospital , Halle



General Ward Department

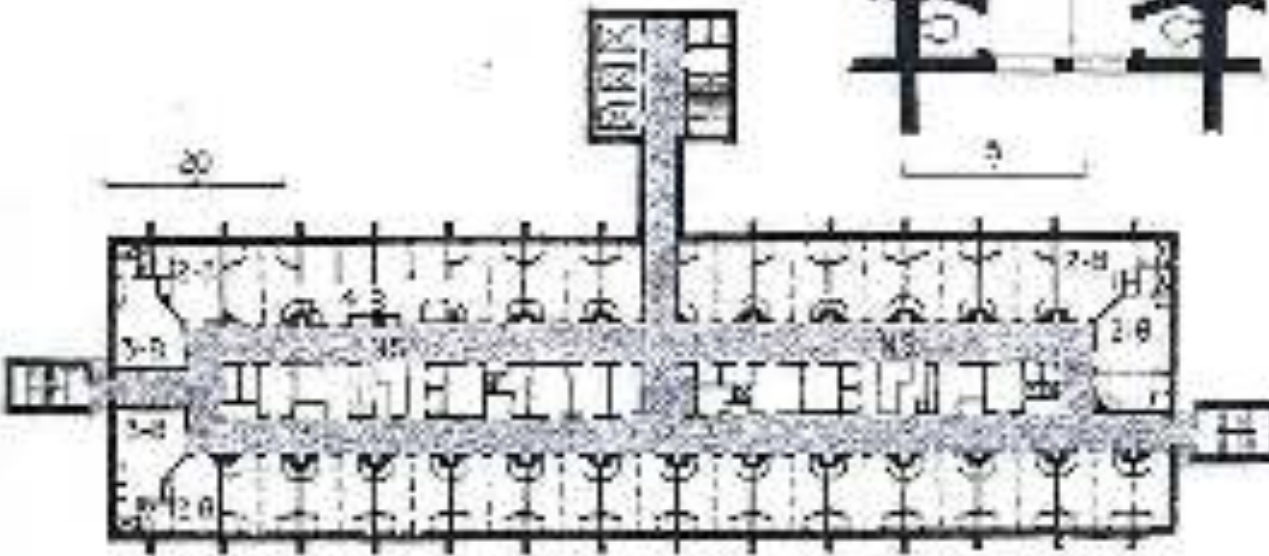
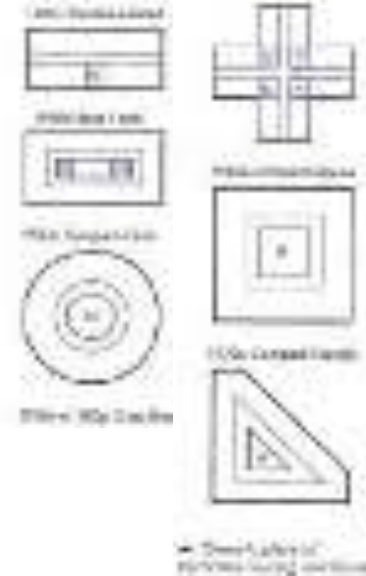


Racetrack



Double corridor (race-track) plan. Holy cross hospital , Los Angeles

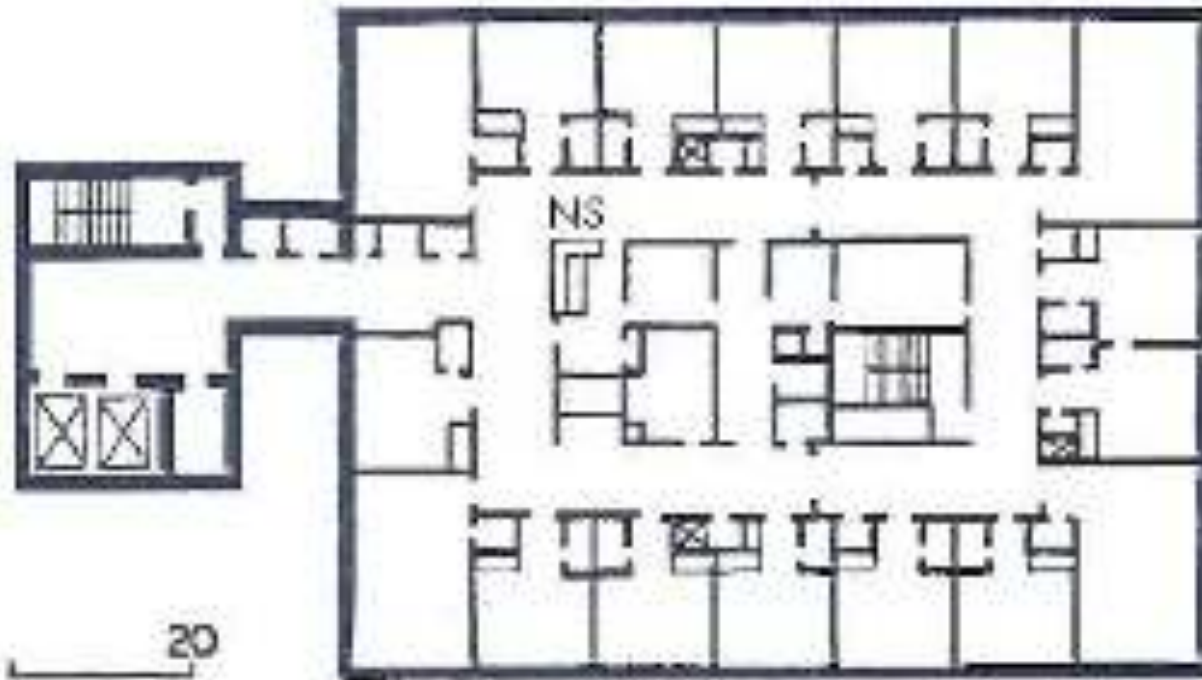
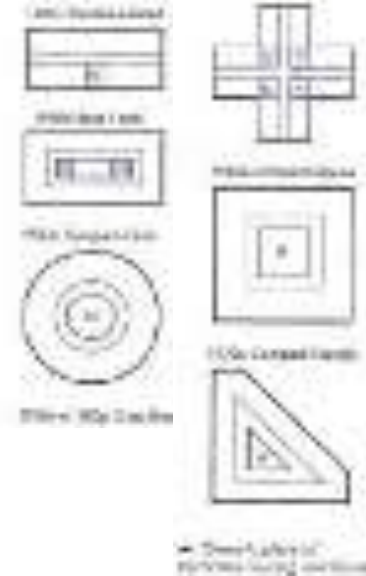
General Ward Department



Racetrack

Paradise valley hospital , National valley , California

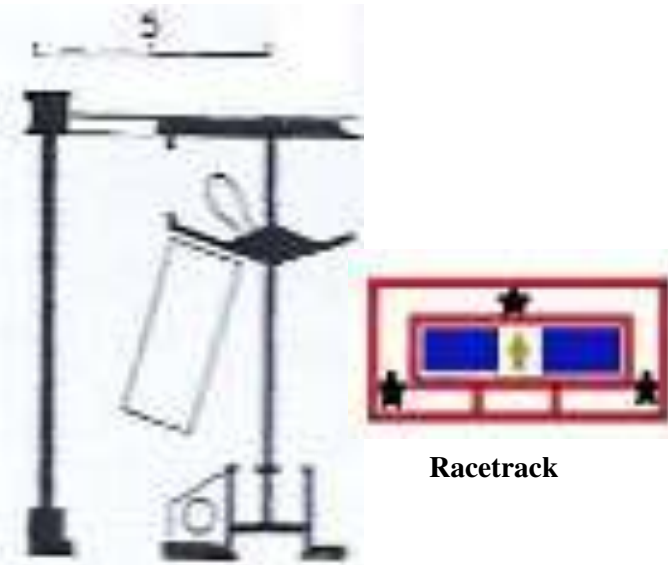
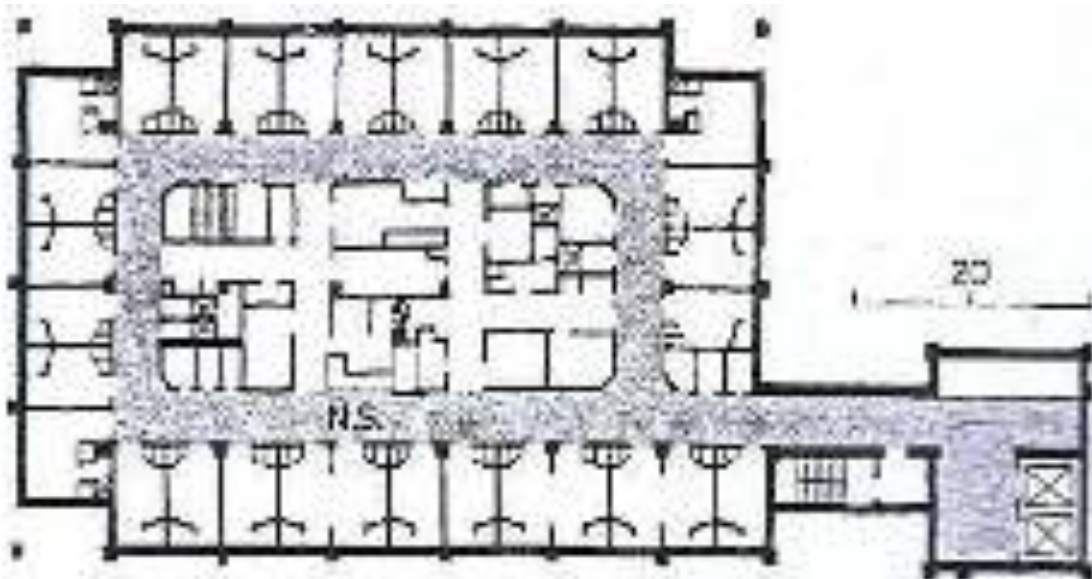
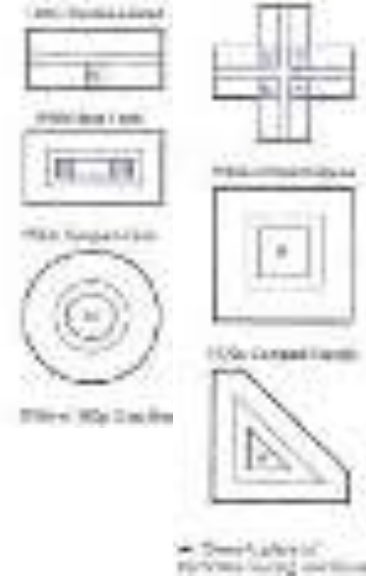
General Ward Department



Racetrack

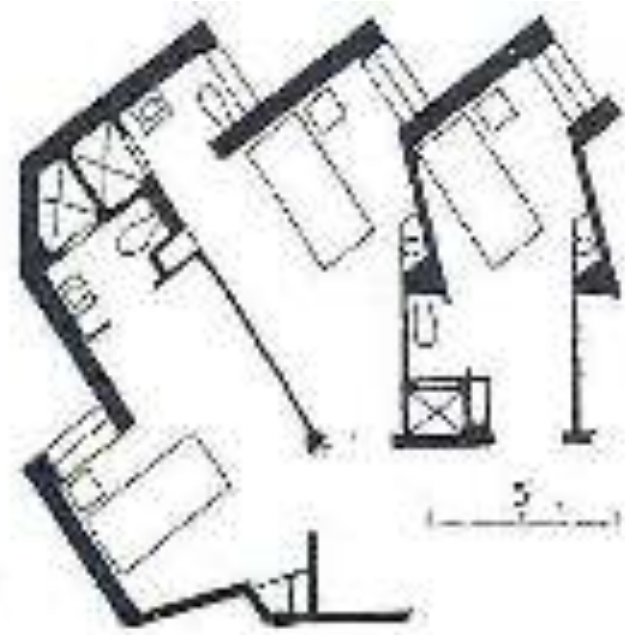
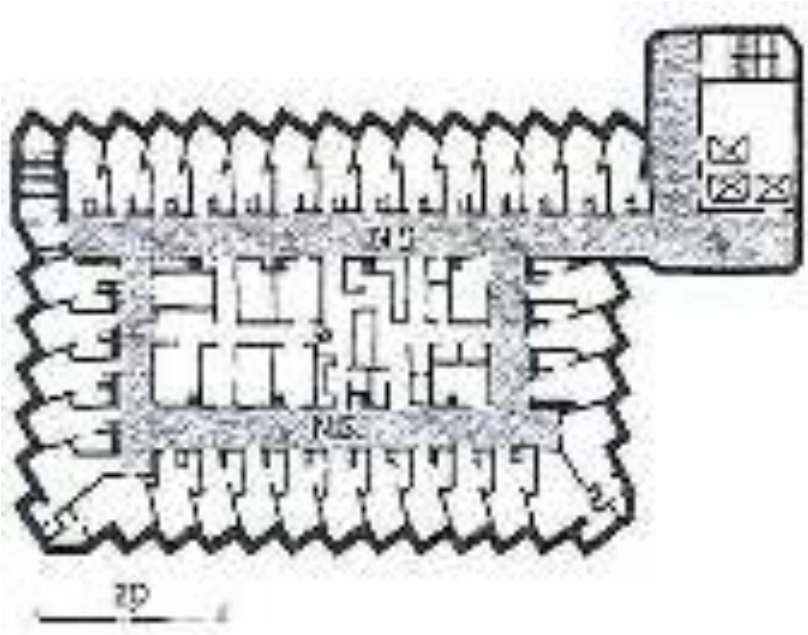
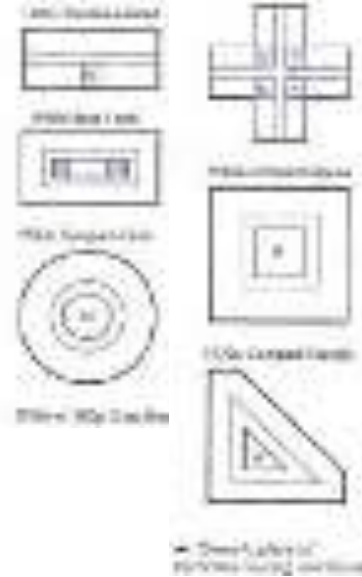
Compact rectangular plan. Providence hospital , Alaska

General Ward Department



Providence hospital , Medford , Oregon

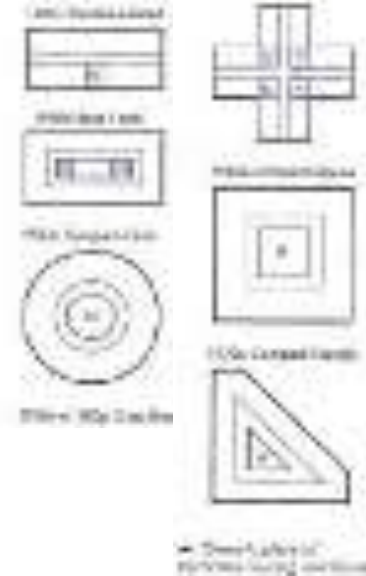
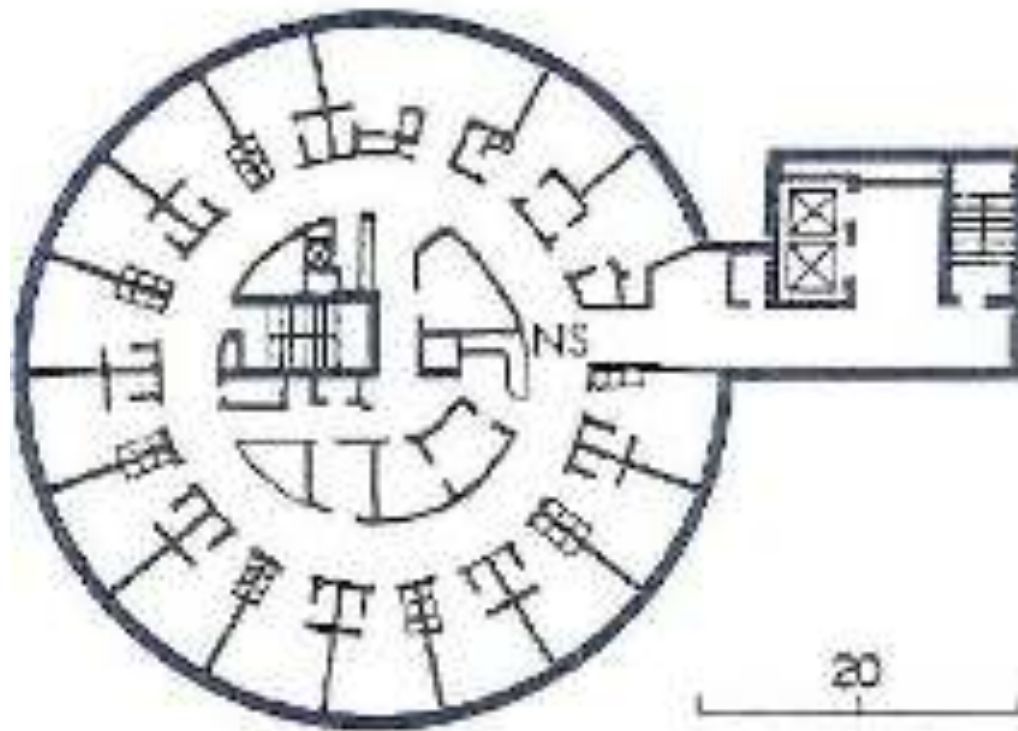
General Ward Department



Racetrack

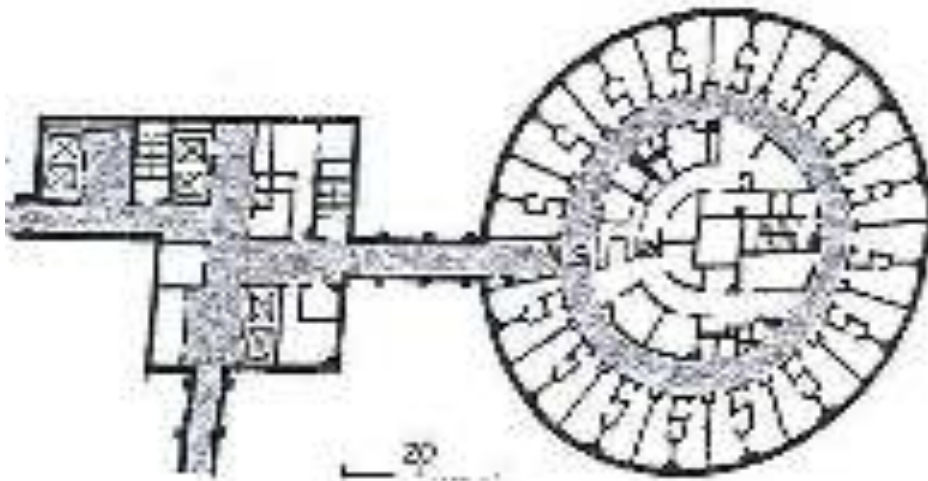
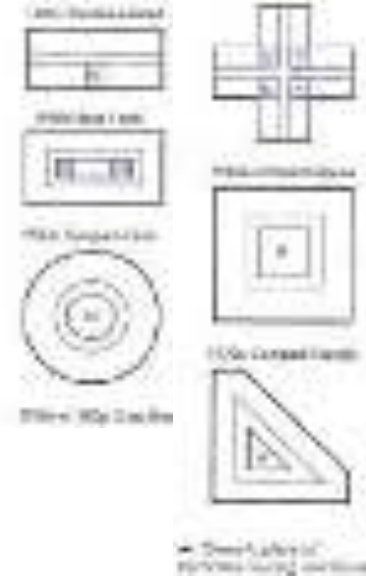
Centinela valley hospital , Inglewood , Cal.

General Ward Department



Compact circular plan. Valley Presbyterian hospital phase 1, California

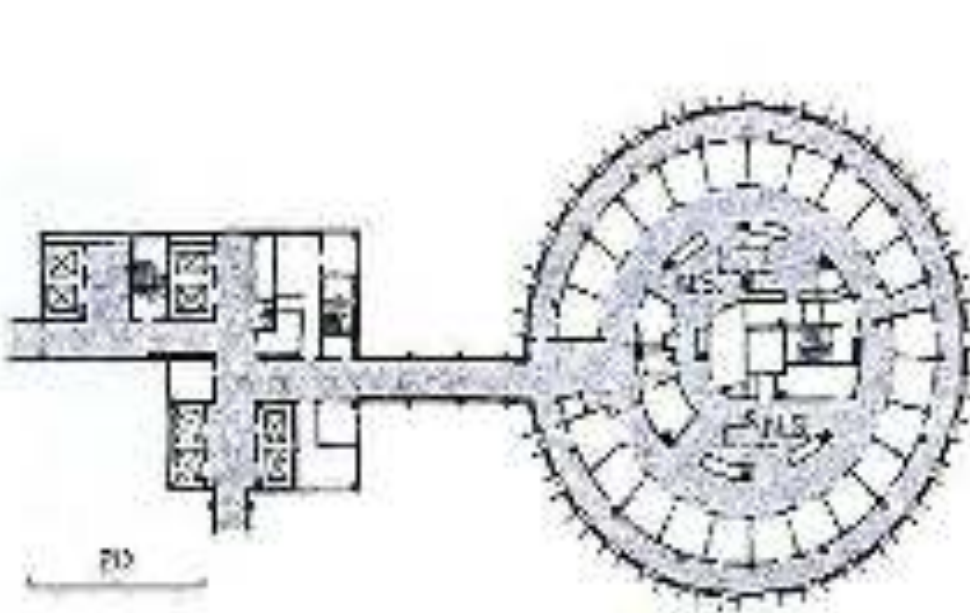
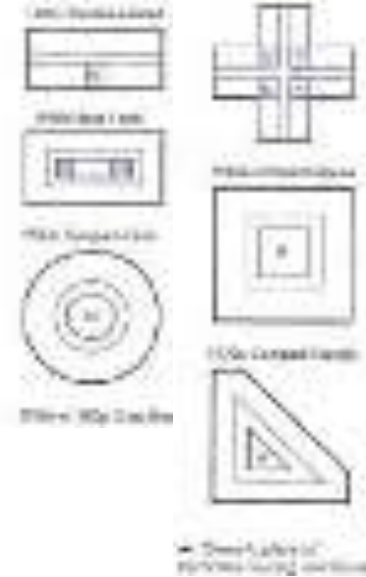
General Ward Department



Radial

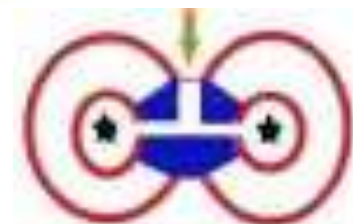
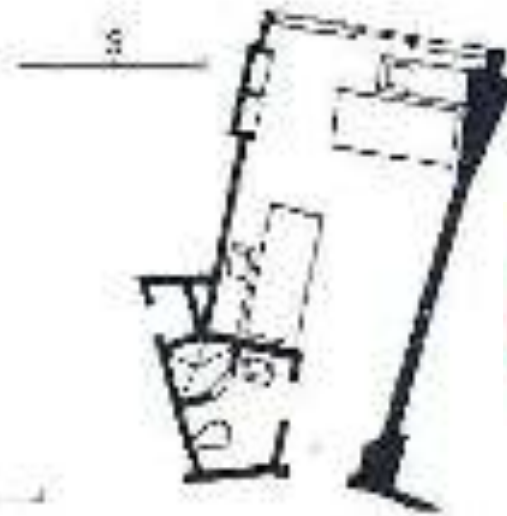
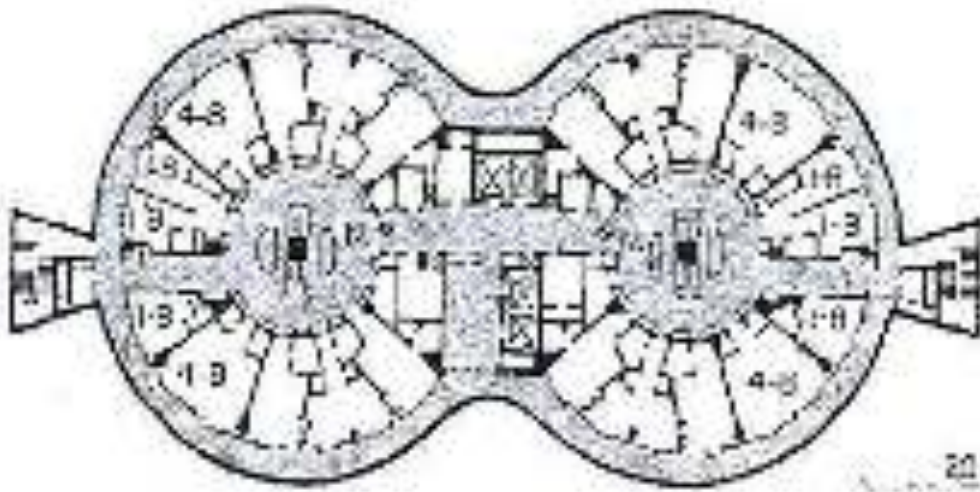
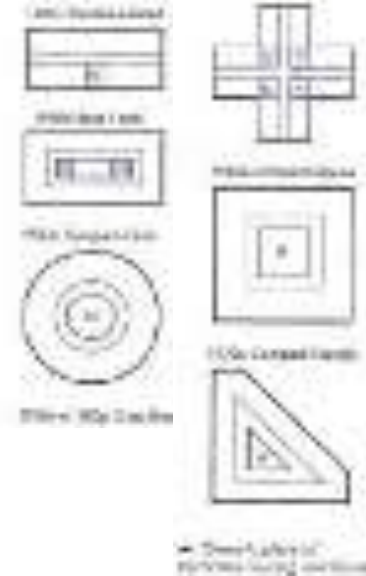
Compact circular plan. Valley Presbyterian hospital phase 3 -1971 -32 BR California

General Ward Department



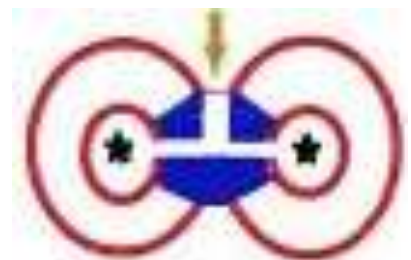
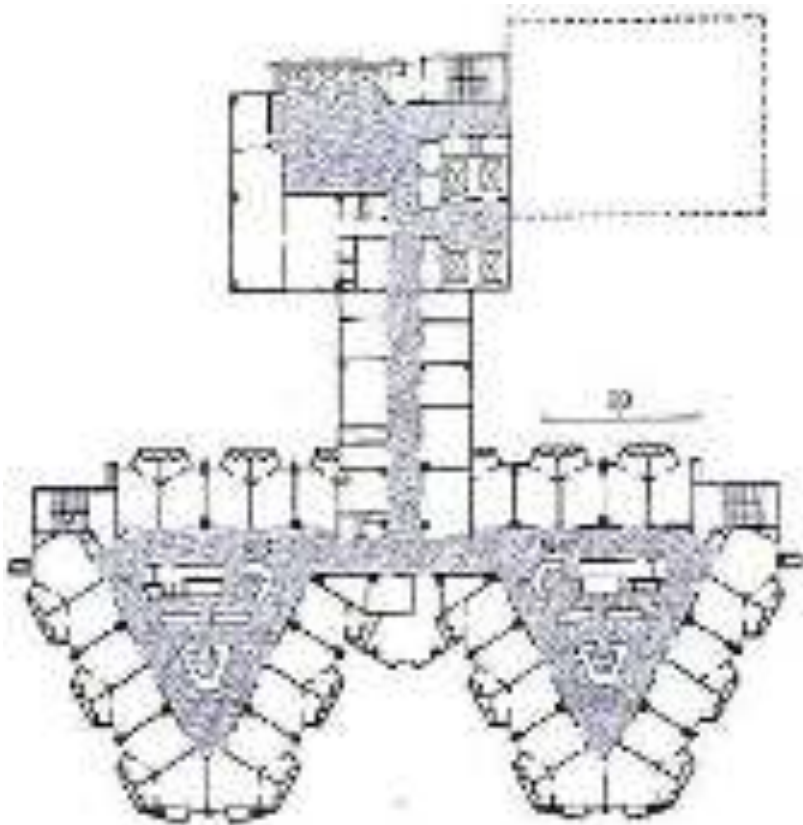
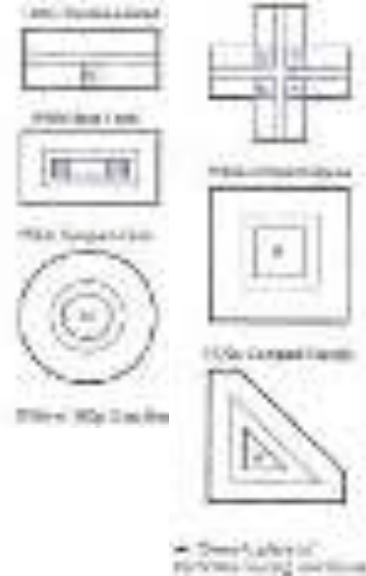
Compact circular plan. Valley Presbyterian hospital phase 3 -1971 – 23 BR , California

General Ward Department



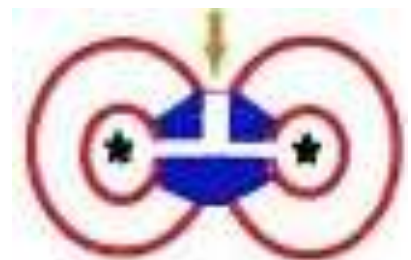
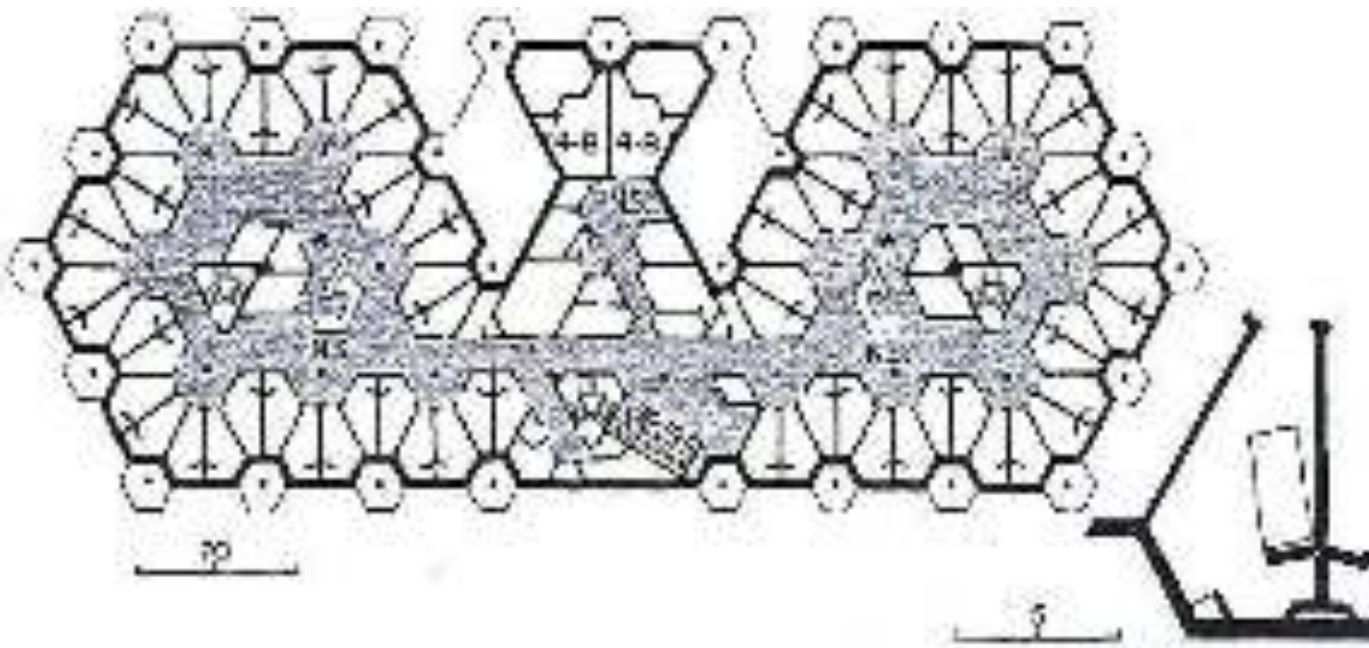
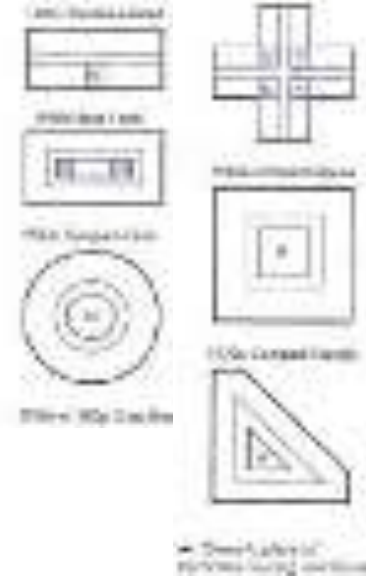
Kaiser foundation ,panorama city , CAL.

General Ward Department



Radial

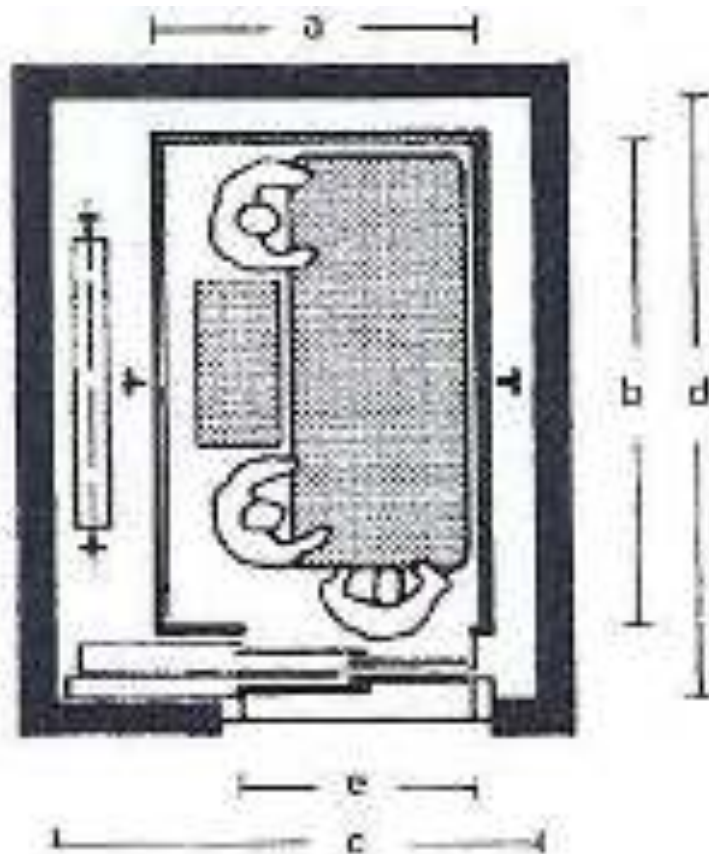
General Ward Department



Radial

Kaweah delta , Visalia ,Cal.

Bed Lift



⑧ Bed lift

capacity [kg]	1500	2000	2500
shaft width c	2400	2400	2700
shaft depth d	3000	3000	3300
car width a	1400	1500	1800
car depth b	2400	2700	2700
car door e	1300	1300	1300
car height	2300	2300	2300
car door height	2100	2100	2100
capacity (passengers)	21	26	33

⑨ Dimensions of bed lifts → ⑧