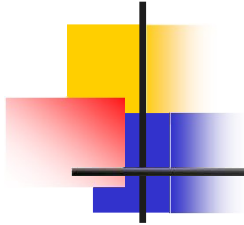


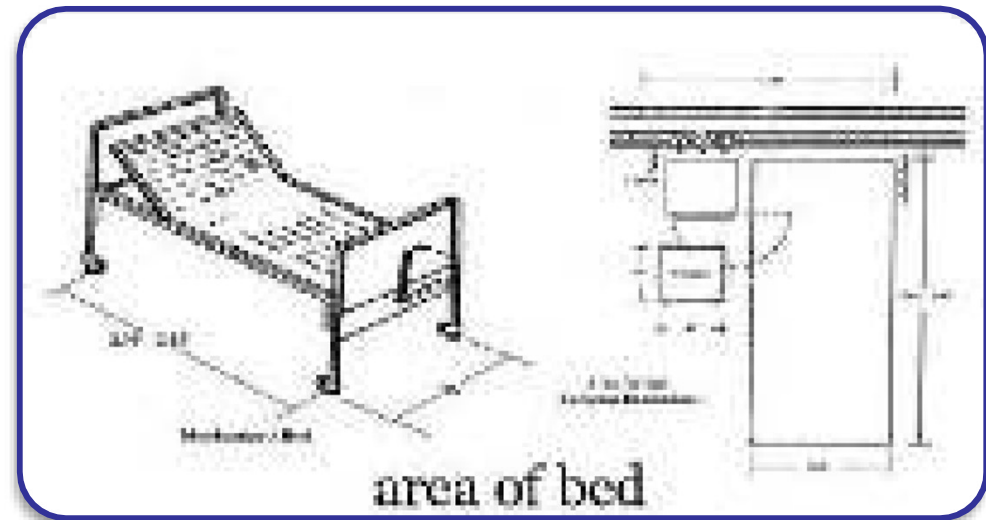
**University of Salahaddin
College of Engineering
Department of Architecture**



General Ward Department 2



General Ward Department



General Ward Department

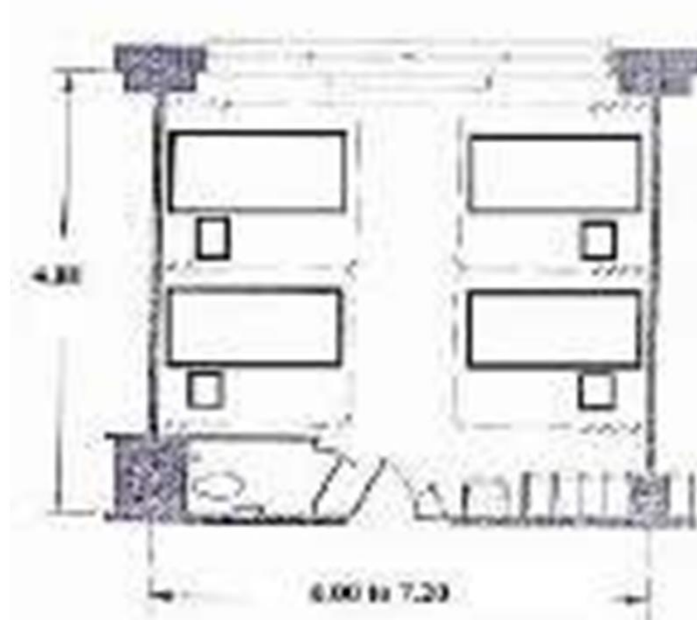
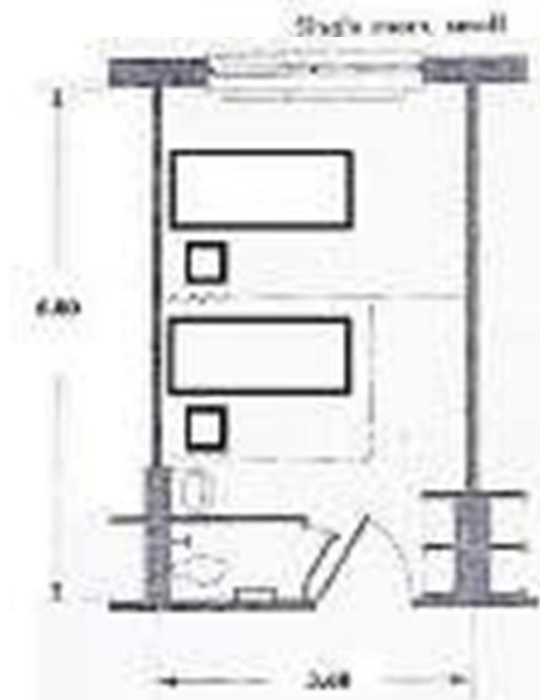


General Ward Dep



Single room, small

Single room, medium size

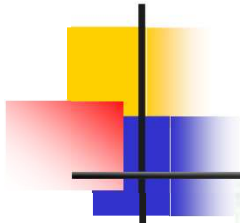


Double bedroom, small, standard

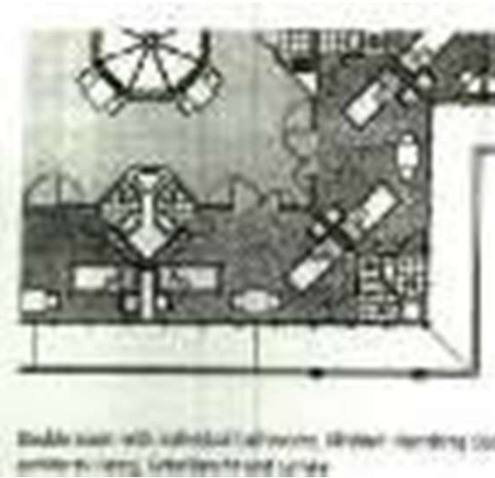
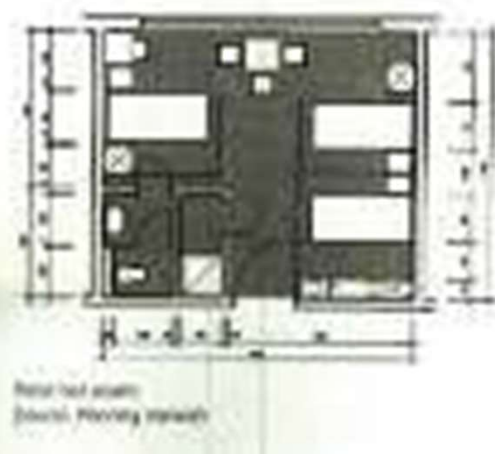
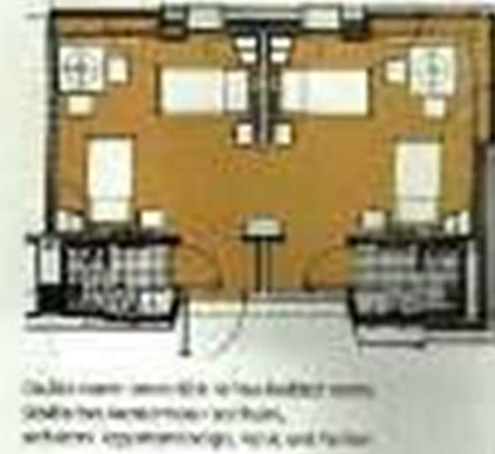
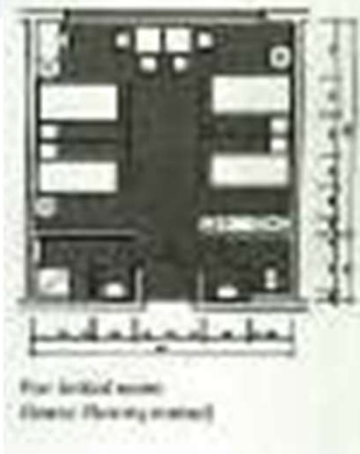
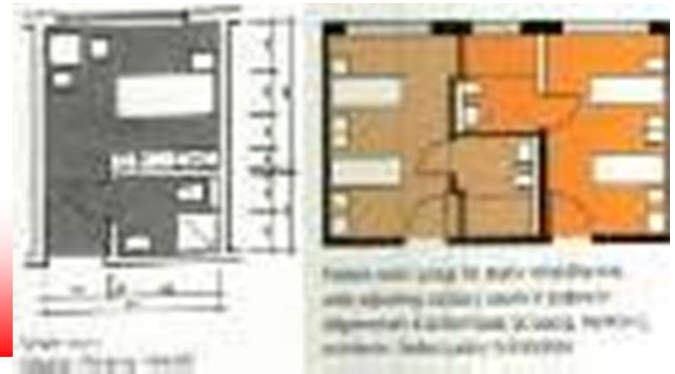
Double room, medium size

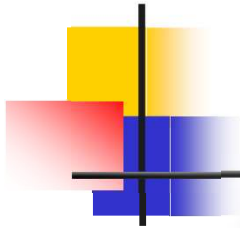
Furnished room

salon

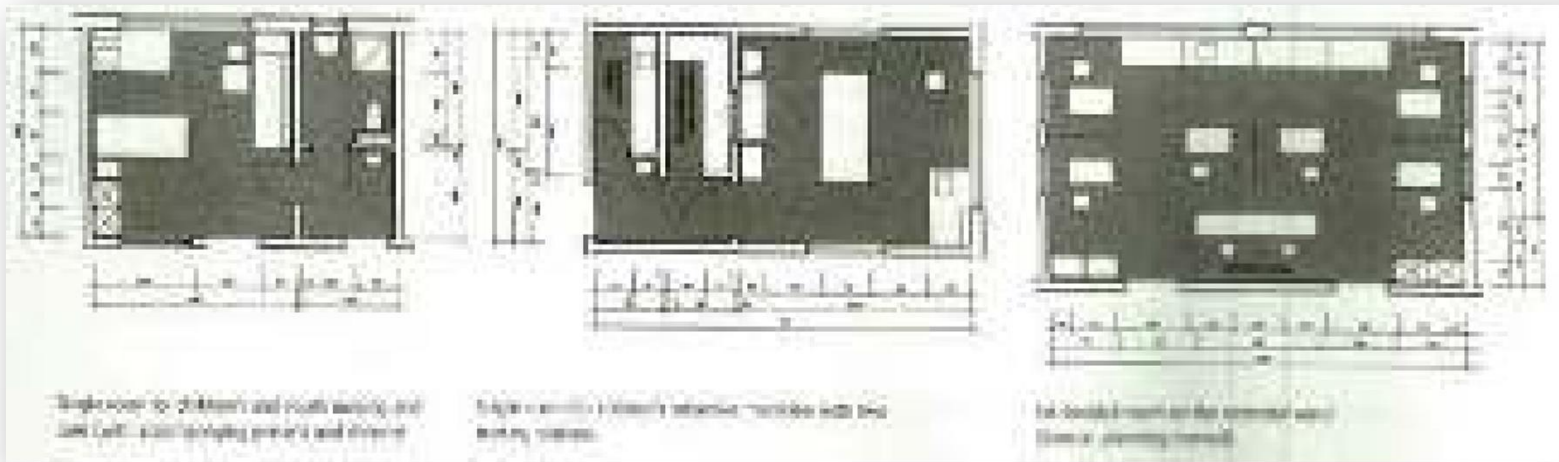


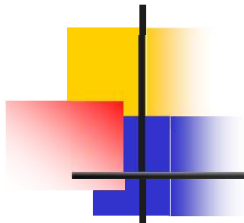
Wards Department



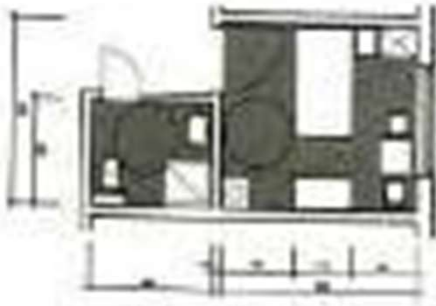


Wards Department [Children-Neonatal]

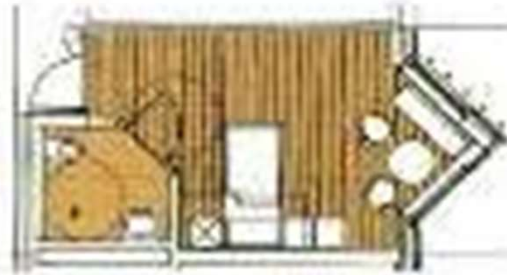




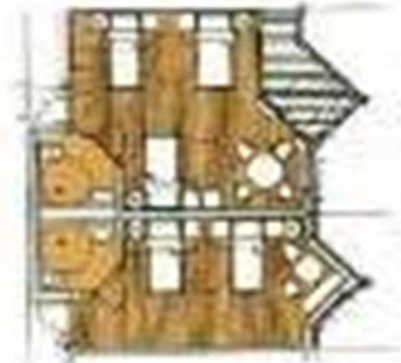
Wards Department [Geriatric-Rehabilitator- Nuclear Medicine]



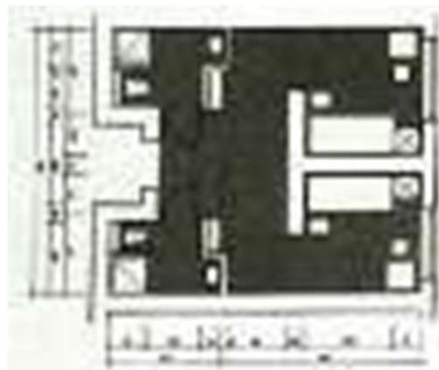
Three rooms for private patients.
Elderly, wheelchair-bound



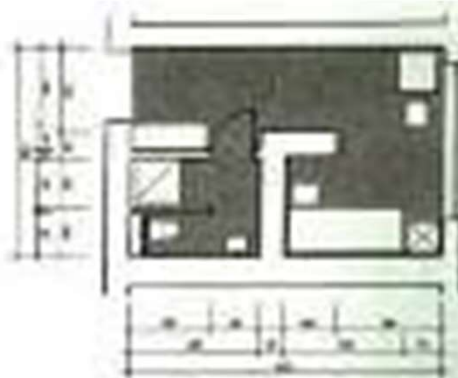
Ward area for all activities, kitchen, dining room,
reception, kitchen, bath, shower and toilet



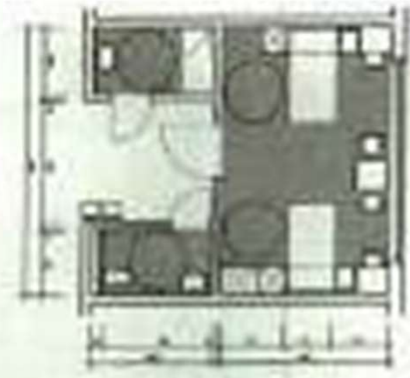
Double and twin bedded room for wheelchair-bound
elderly patients (kitchen, bath, shower, toilet,
reception and stairs)



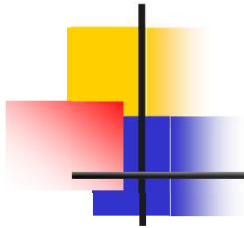
Double room for private patients



Eight beds in junior ward



Double room for private patients (kitchen, dining room)



General Ward Department

