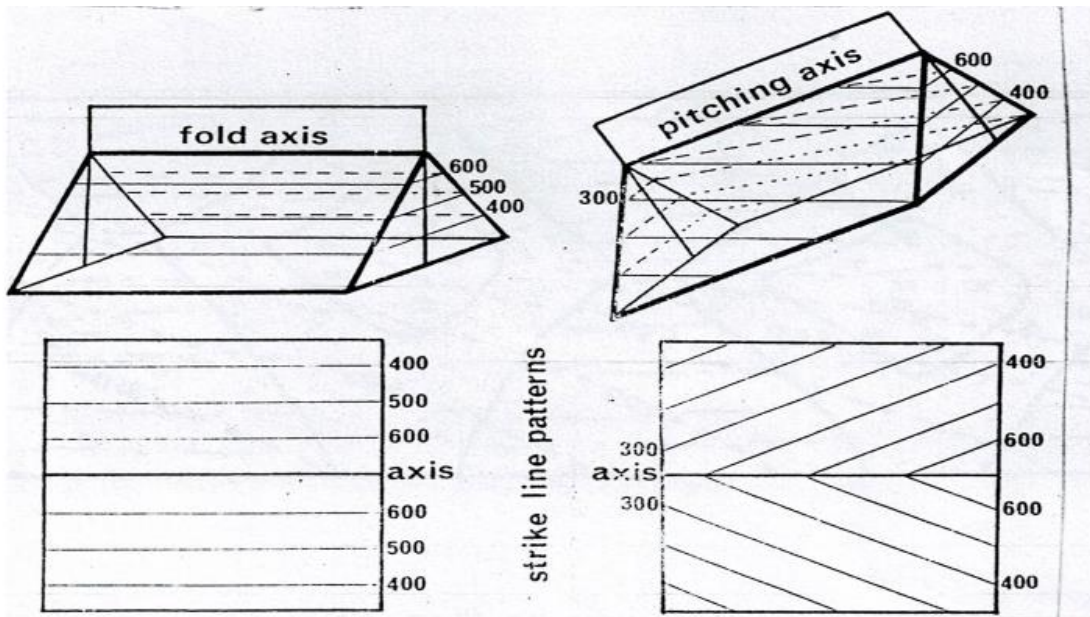


Scale 1:20 000

- 1- Draw and label strike lines of strata.
- 2- Describe the folds of the area.
- 3- Mark the hinge line and find attitude of it.
- 4- Construct a geological cross section through line of section (X-Y) on the map.



Folds and Strike Lines

Fig. 1. Horizontal and pitching folds: the pattern of strike lines is drawn for one rock surface.

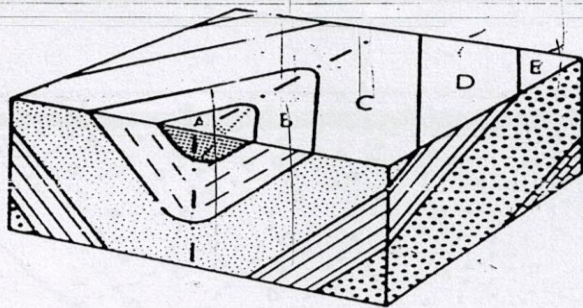


Fig. 1. Block diagram of a plunging syncline.

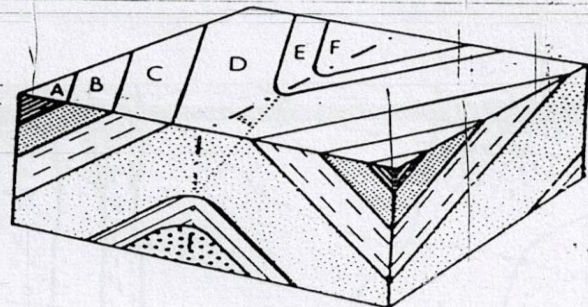


Fig. 2. Block diagram of a plunging anticline.

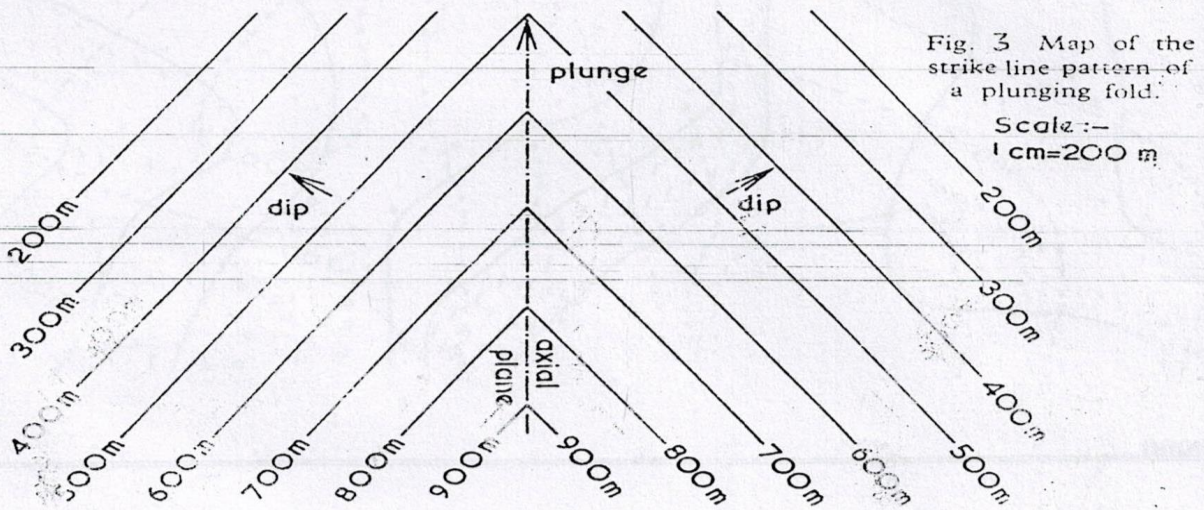


Fig. 3 Map of the strike line pattern of a plunging fold.

Scale :-
1 cm = 200 m