

Stem: Support the upper part of the plant and act as a transport system for nutrients, water, sugar, and starches.

Function

- 1- Provide support to the plant.
- 2- Holding leaves, flowers, and buds.
- 3- In some cases, stems also store food for the plant.

Shapes Of Stem



Winged
Lathyrus



Angular
Triangular
Cyperus

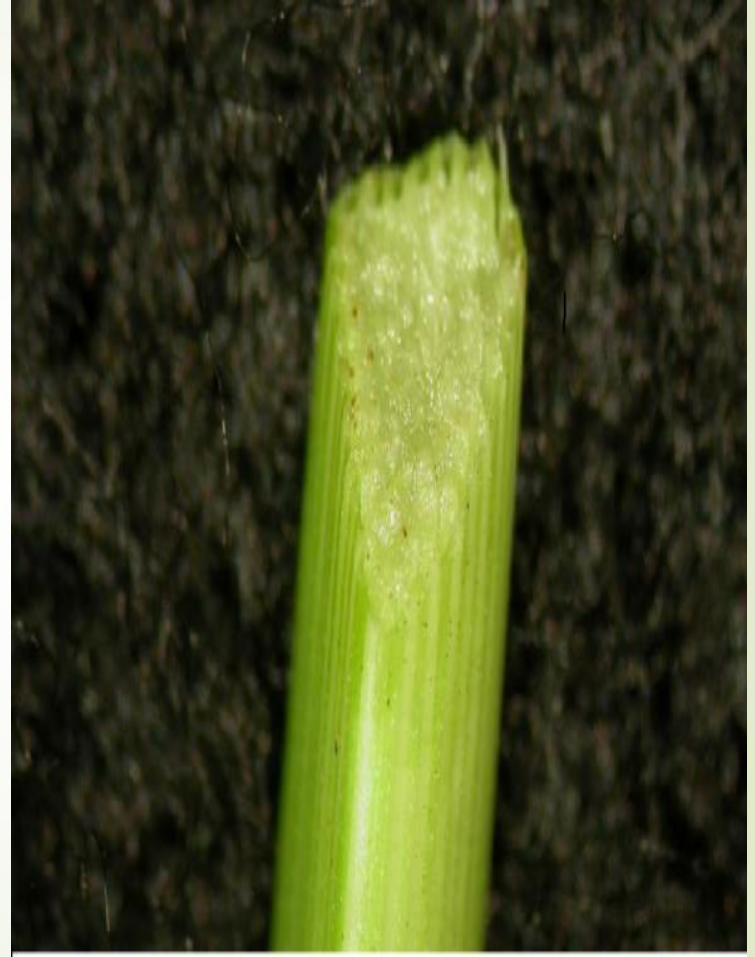


Angular
Quadrangular
Ocimum

Cylindrical Stem



Hollow
Triticum



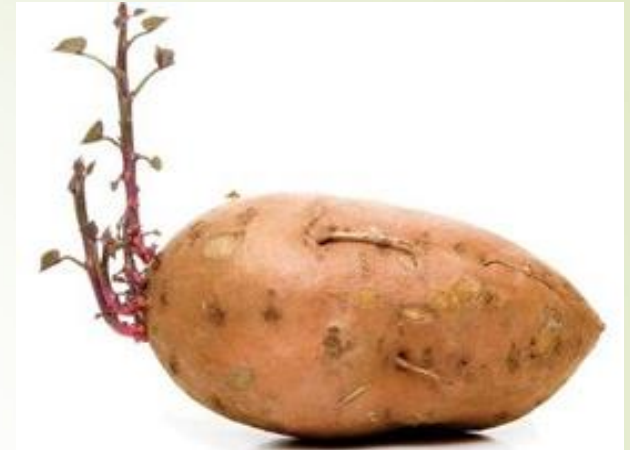
Solid
Bumusa

Types of stem

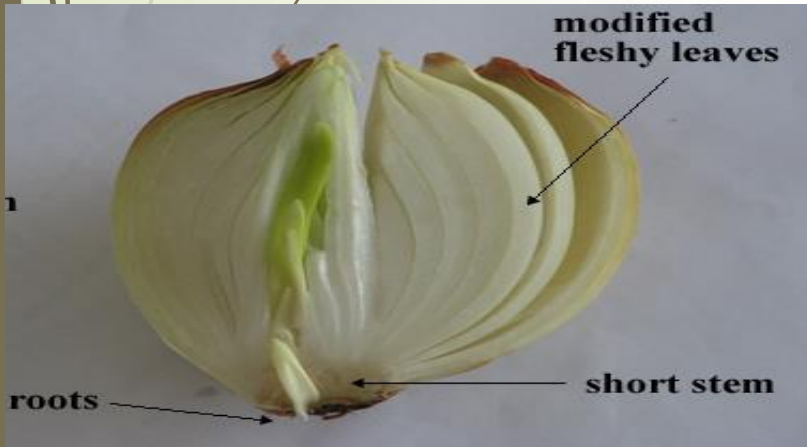
1-Subterranean stem



Rhizomes
Cynodom



Tubers
Solanium



Bulbs
Allium cepa



Corms
Arum

2-Aquatic stems



Floating stem
Nymphaea



Submerged stem
Ceratophyllum

3- Aerial Stem



Erect stem
Morus

Nerium

Rosa

Ascending
stem

Week stem



Prostrate stem
Cucumis



Runner stem
Fragaria



Twining stem
Convolvulus



Climbing stem
Lathyrus

Modified or Special stems



Spiny stem
Alhagi



Thorn stem
Punica



Tendrils stem
Vitis venifera



Cladophylls stem
Cladodes
Ruscus



Cladophylls stem
Phylloclades
Opuntia