

**University of Salahaddin
College of Engineering
Department of Architecture**



Interior design

**Supervised by
M . Sc . Nazik Jamal
MA Zenab K. Majid
2020-2019**

Denominators of Interior Design

Denominators of interior design can be grouped into two main groups' physical elements and it visual characteristics.

1-Physical Elements

A-Ceiling

B-Floor

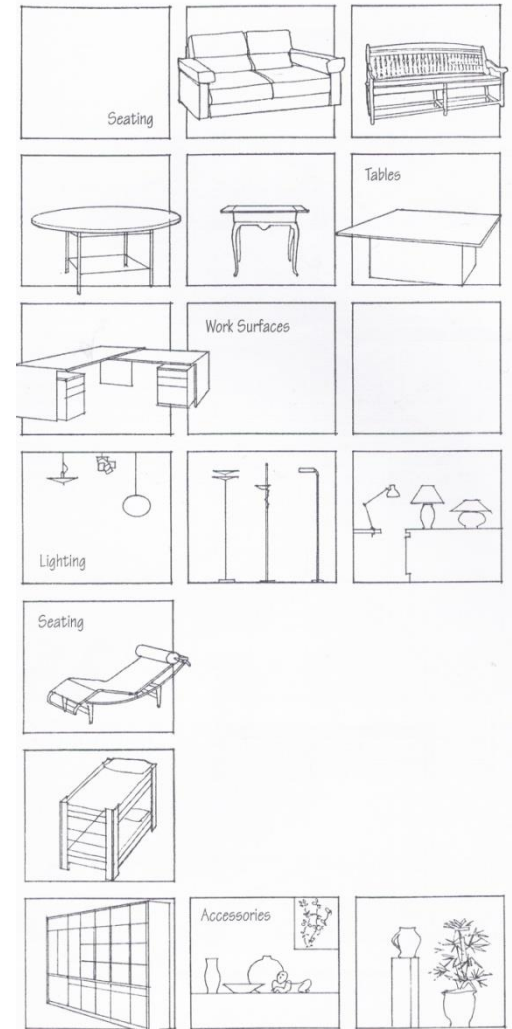
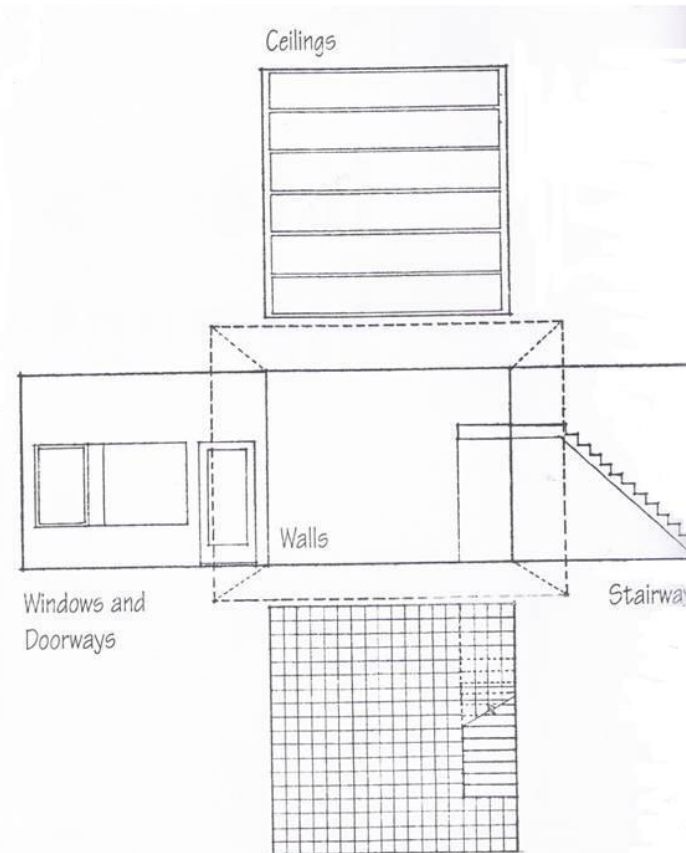
C-Wall

D-Transitional elements

- a. Windows and Doors
- b. Stairs and ramps

E-Furnishing

- a. Furniture
- b. Accessories



Denominators of Interior Design

2-Visual Characteristics of Physical Elements

A-Shape

- a. Point
- b. Line
- c. Linear And Planar Shape

B-Color

C-Light

D-Texture

E-Pattern

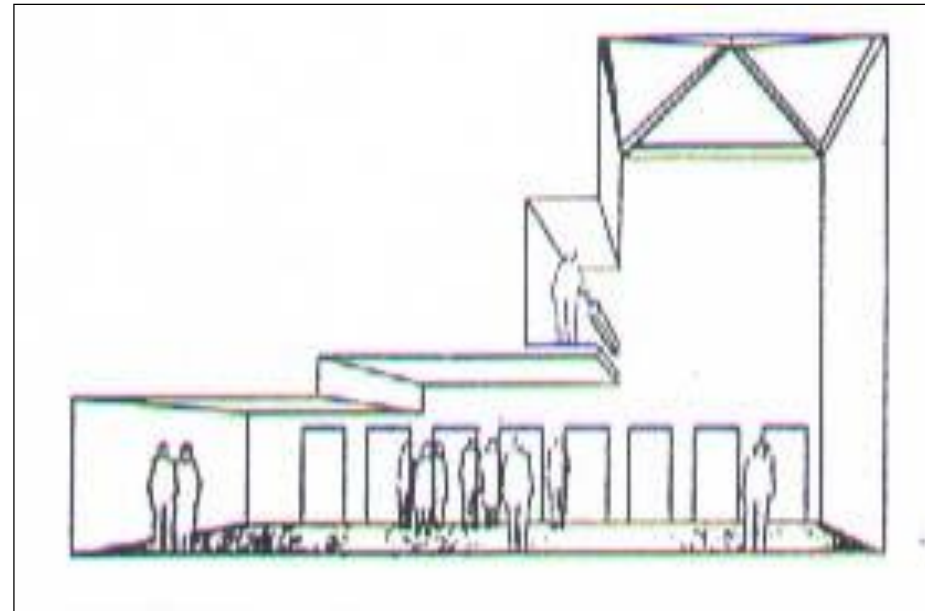
F-Principles of Design

- a. Balance
- b. Proportion
- c. Size
- d. Harmony
- e. Unity
- f. Variety and Contrast
- g. Rhythm
- h. Repetition
- i. Emphasis



Ceiling

Ceilings play an important visual role in shaping the interior space and limiting its vertical dimension. It is the sheltering element of interior design offering both physical and psychological protection for those beneath its canopy. Ceilings are formed by the undersides of floor and roof structures. The ceiling material can be attached directly to structural frame or be suspended from it

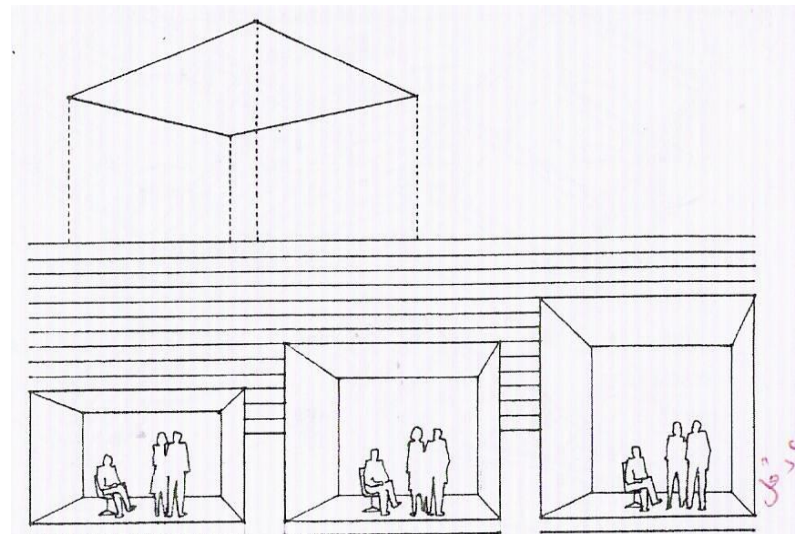


Ceiling

The height of ceiling had a major impact on the scale of a space. High ceilings tend to give space an open, airy, lofty feel.

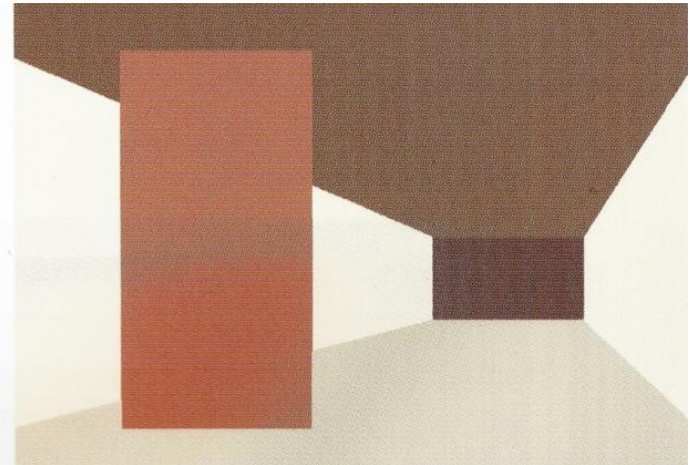
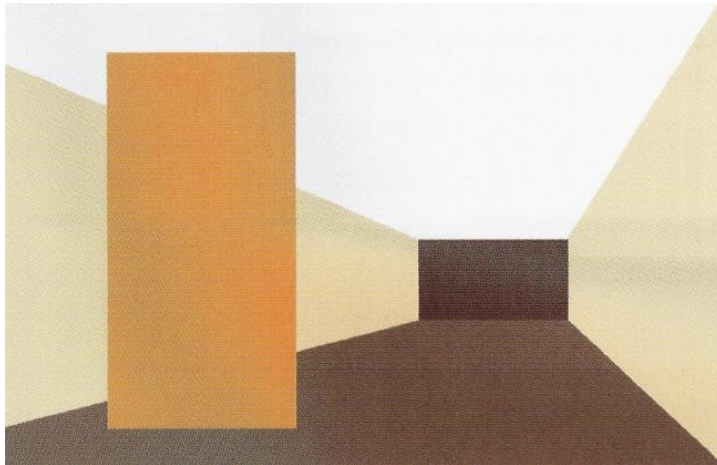
While, low ceilings, on other hand,, emphasize their sheltering quality and tend to create intimate, cozy spaces .

The normal height of a ceiling should be in proportion to a horizontal dimensional room and its use.



Ceiling

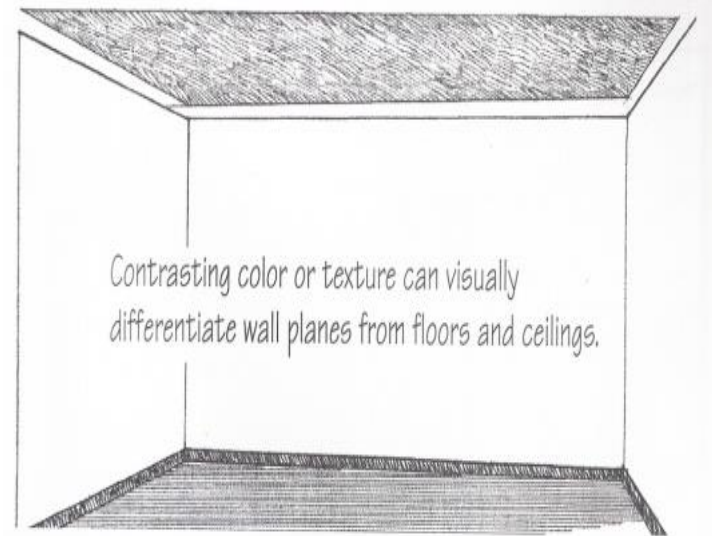
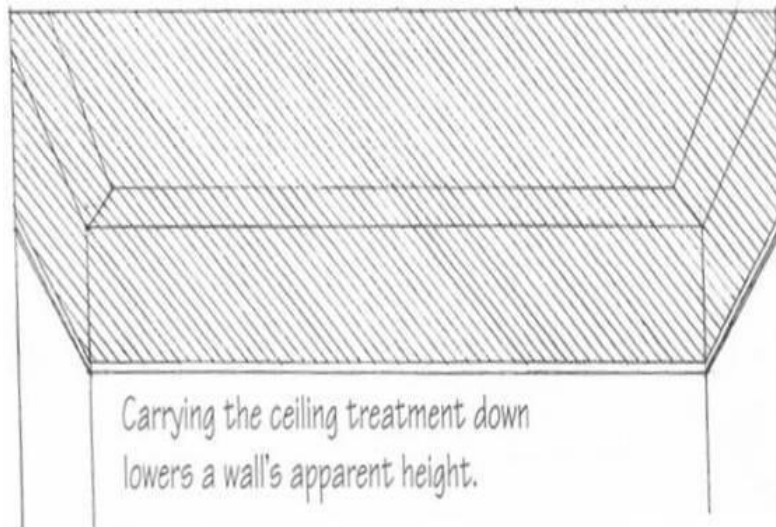
- **The apparent height of a ceiling can be lowered by using a dark, bright color that contrasts with the wall color or by carrying the ceiling material or finish down on to the walls and because light values appear to recede**





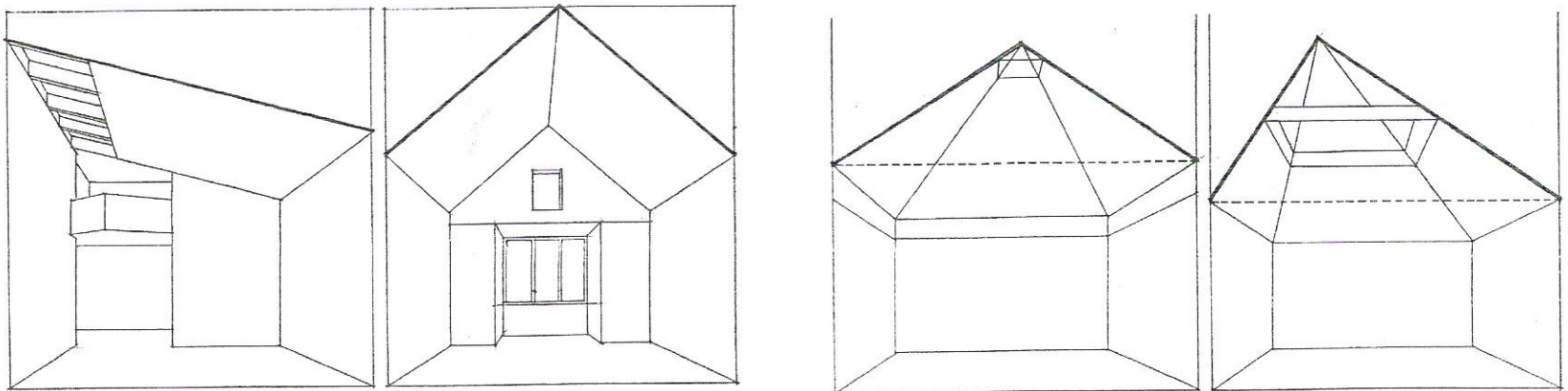
Ceiling

Any ceiling pattern will tend to attract our attention and appear to be lower than it is because of its visual weight. Since linear patterns direct the eyes which can also emphasize the dimension of space to which they are parallel



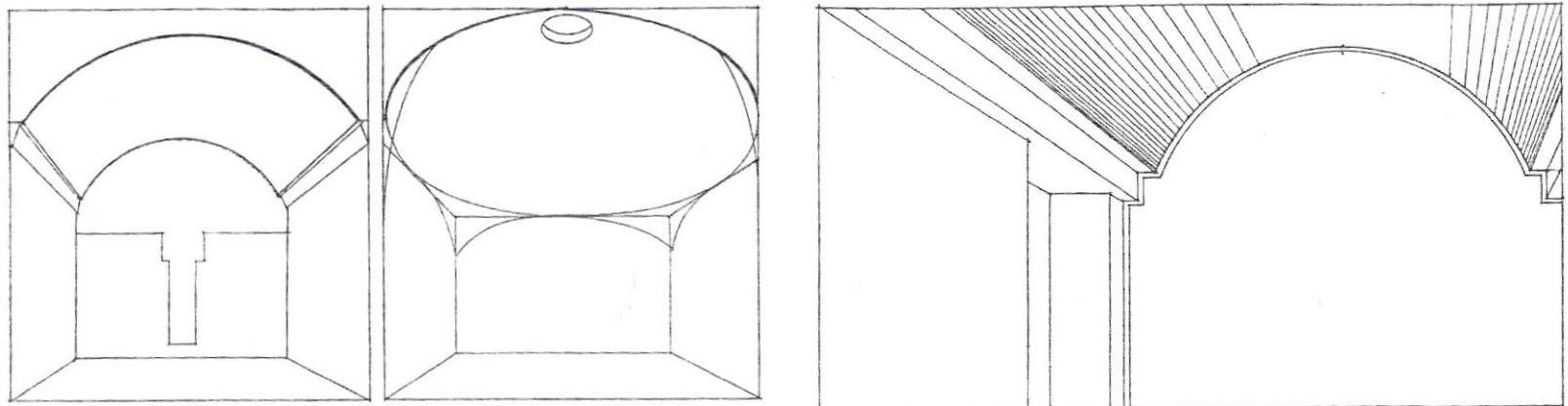
Ceiling

- **Ceiling supported by a floor structure above are normally flat. Gabled ceilings expand space upward toward the ridge line and it may direct our attention to the height of the ridge or to its length. Pyramid ceiling directs the eye upward to its peak a focus that can be accentuated further with an illuminating skylight.**



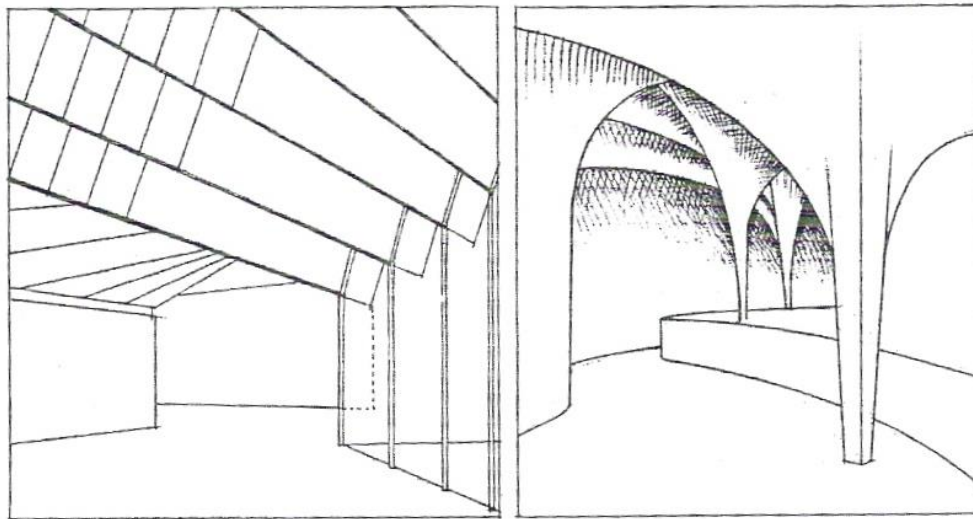
Ceiling

The coved ceiling uses a curved surface to soften its meeting with the surrounding wall planes and gives the enclosed space a plastic, mouldable quality. Increasing the scale of the cove further leads to formation of either, vaulted ceiling which directs our eyes upward and along its length, while dome ceiling which is a centralized form that expands space upward and focuses our attention on the space beneath its center.



Ceiling

Free form ceilings contrast with the planar quality of walls and floors and therefore, attract our attention. Whether curvilinear or angular in nature, they are decorative and can often dominate the other elements of interior space



Floors

- **Floors are the flat level base planes of interior space. As the platforms that support our interior activities and furnishings which must be structured to carry these loads safely and their surfaces must be durable enough to withstand continual use and wear .The floor can through its color, pattern, and texture play an active role in determining the character of a space. Textured carpet will increase the sense of space. Absence of a pattern enlarges space. Accent rugs can be centers of interest.**

