

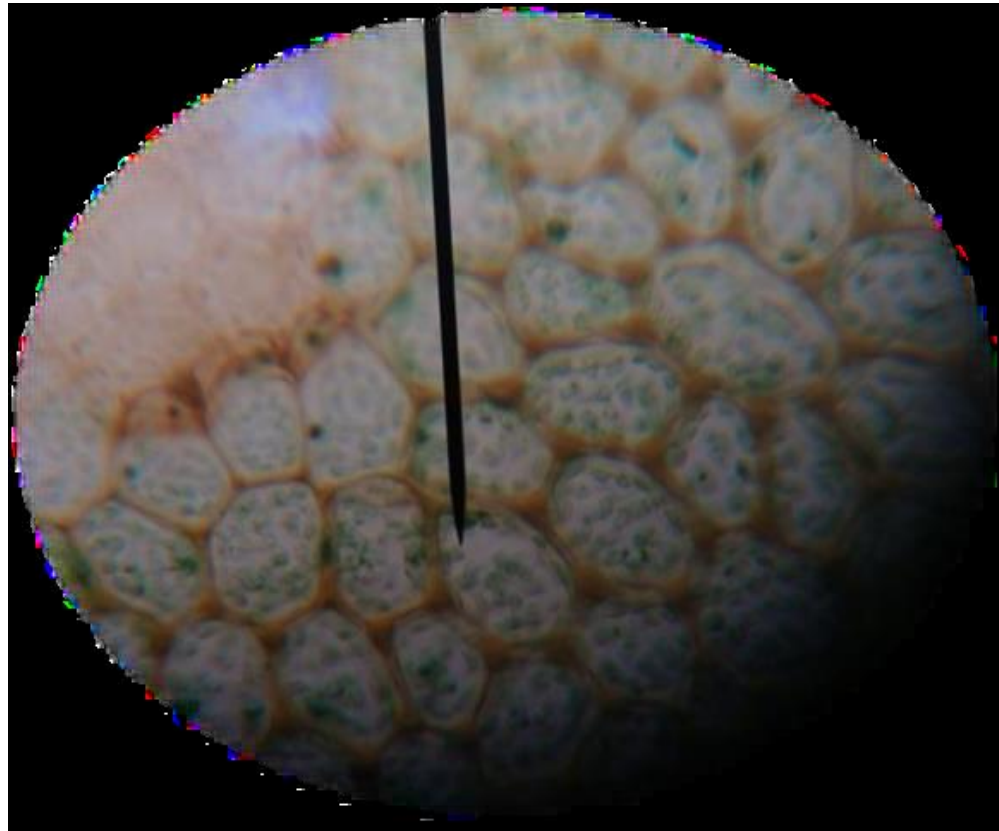
Q1 A/ write function of this part of the microscope

1.The mechanical stage.

2. Condenser.

3. Fine focus adjustment knob.

Q1 B/ What is this

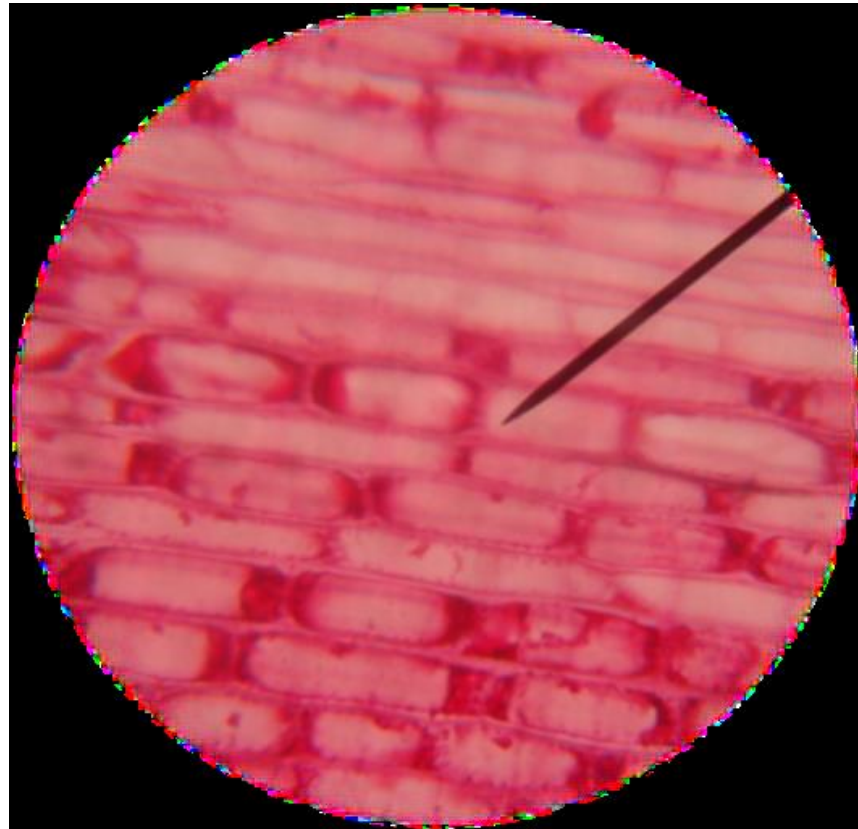


Q2 A/Define the :

1. Plasmodesmata.

2. plant cell .

Q2 B/ What is this?



Q3 A/ fill the blanks

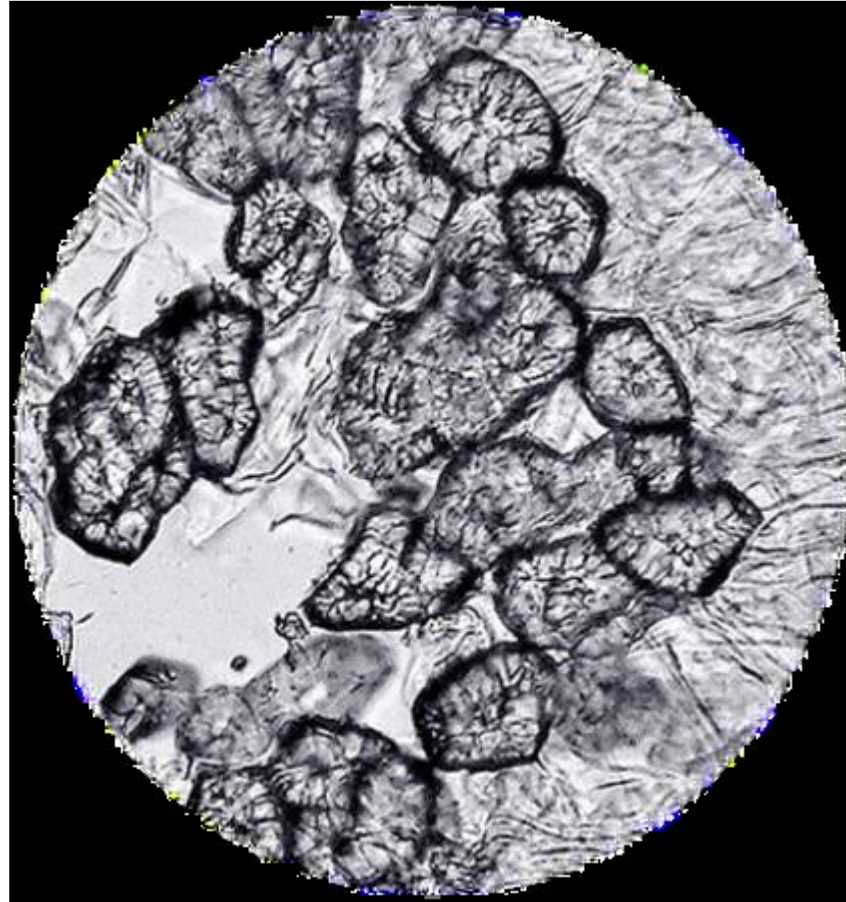
The Pits is and it consists of

1.

2.

3.

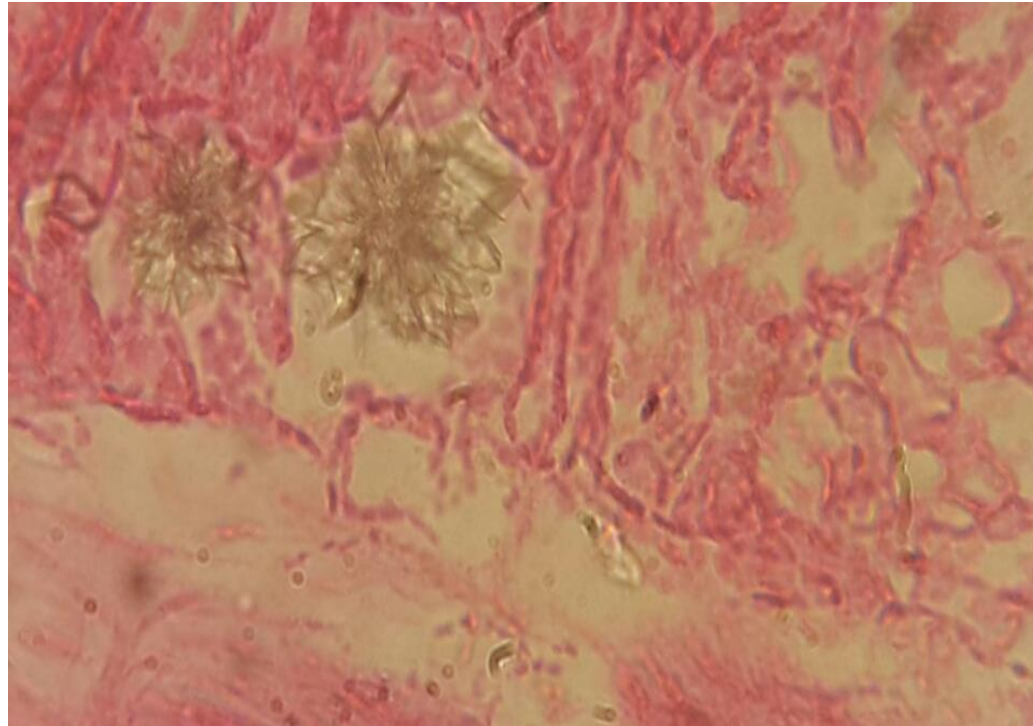
Q3 B/ What is this



Q4 / Define Cell Division &

Why do cells need to divide?

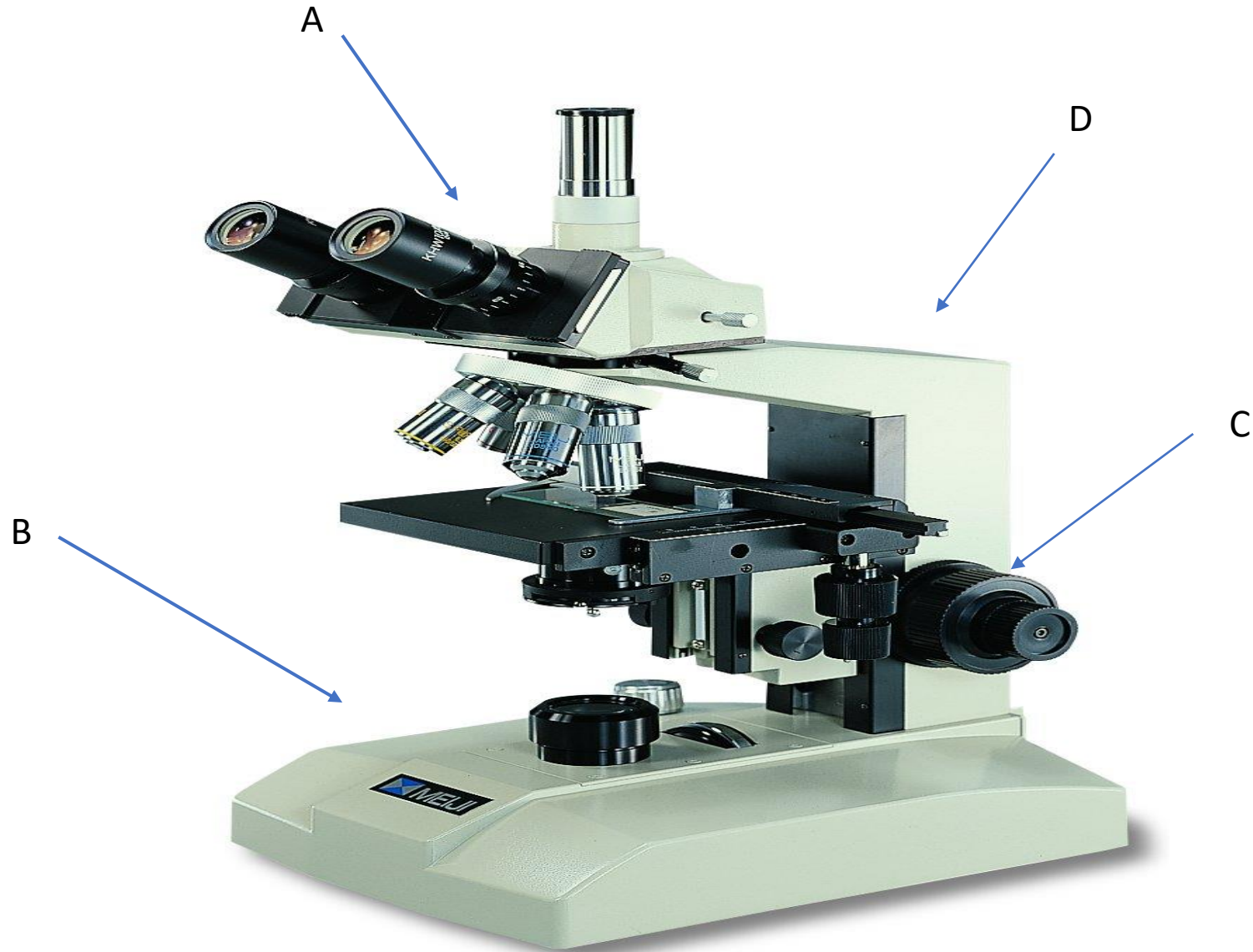
Q5 A/ What type of this crystal



Q5 B/ The differences of starch grains from plant to another dependent on:

- 1.
- 2.
- 3.
- 4.

Q6 A/ Write the name of this part

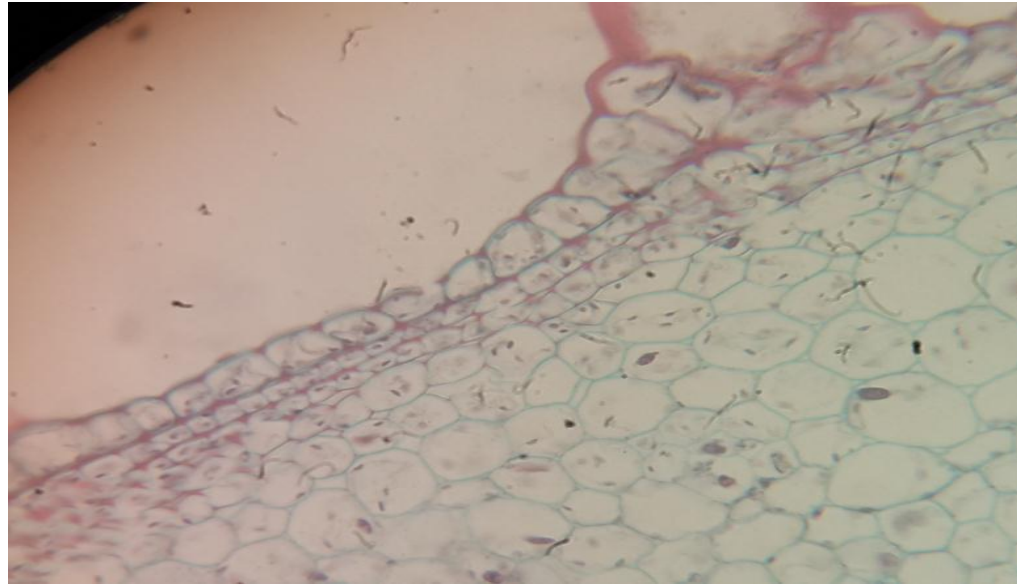


Q6 B/Explain prophase I in MEIOSIS I

Q7/ Write function of the

- 1. Mitochondria**
- 2. Cytoplasm**
- 3. Golgi apparatus**
- 4. Aleurone grains**
- 5. Cell sap**

Q8 A/What type of this tissue



Q8 B/ Write function and growth in which part of the plants

1. Protoderm
2. Paranchyma tissues
3. Seclerenchyma tissues
4. Epidermal cells
5. Cork (phellem

Q9/ Fill the blanks

1. Before cell division occurs , the cell _____(copies) all of its_____, so each daughter cell gets complete set of _____from parent cell.
2. Mitosis occurs in all the _____(body) cells.
3. Haploid is

Q10/ Write (5) different between plants and animal cell